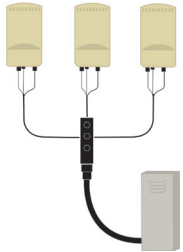
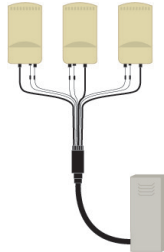


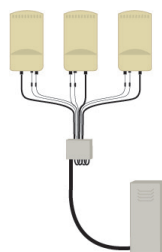
**HELIAX® FiberFeed®
Hybrid Pendant**
Hybrid fiber/power breakout terminal with hybrid trunk



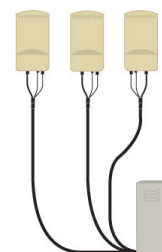
**HELIAX® FiberFeed®
Hybrid Direct**
Hybrid fiber/power breakout assembly



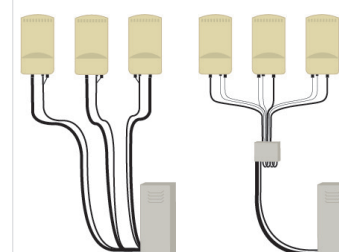
**HELIAX® FiberFeed®
Hybrid Standard**
Hybrid fiber/power breakout using a distribution box



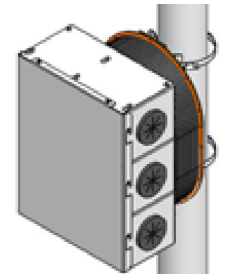
**HELIAX® FiberFeed®
Individual Hybrid Sector**
Standard hybrid fiber/power



**HELIAX® FiberFeed®
Discrete**
Separate fiber/power



**HELIAX® FiberFeed®
Discrete Plug-and-Play**
Fiber/enclosure



Applications

Reduced complexity for high-count RRU sites; accelerated rollouts; save time, space, and leasing costs

Accelerated rollouts for high-count RRU sites; save time, space, and leasing costs

Speed of installation and fewer cables, while maintaining configurability with a junction box

Site builds where an economical solution is desired, yet space is limited and/or fast installation time is a priority

Upgrades or replacements where an economical solution is desired

One solution serves multiple RRU vendors and quick installation

Features and benefits

Simplification

- Adaptable design to mate with any RRU

Speed of deployment

- Advanced plug-and-play installation with hybrid connector ports on breakout terminal

Future-ready

- High port counts provide spare capacity for adding future RRUs

Simplification

- Mate to any RRU with matching hybrid tail

Speed of deployment

- Plug-and-play installation with hybrid connectorized cable legs on breakout assembly

Future-ready

- Choice of power conductors and fiber count
- Scalable to support new RRUs

Cost effectiveness

- Blends power and fiber into one cable

Installation flexibility

- Allows convenient reconfiguration of wiring inside the junction box
- Moderate labor intensity

Enhanced scalability

- Using a single hybrid trunk cable with a junction box enables adding new RRUs by simply adding supporting jumpers

CapEx savings

- Cable price is almost the same as "separates," but labor and accessory costs are cut in half*

Speed of deployment

- Reduces installation time by more than half over traditional market approach

Tower space

- Takes up half the space of "separates," saving on tower leasing costs
- Lower wind load

Inventory management

- One hybrid cable replaces a power cable and various OEM-specific fiber cable designs

*Based on a June 2016 time study

Budget

- Attractive when material cost is a priority over total solution cost

Installation flexibility

- Install separate individual fiber and power runs to each RRU or one fiber trunk and one power trunk with a distribution box to connect multiple RRUs

Exact OEM match

- Connectivity matches most OEM models and systems

Traditional

- Common market approach for FTTA

Budget

- Bundled cost savings

Speed of deployment

- Accelerates fiber deployments

Installation ease

- Pre-assembled & pre-tested
- Manages excess fiber
- Simplifies site surveys with set fiber lengths

Future-ready

- Scalable to add new RRUs—supports up to six RRUs

Inventory management

- Fewer parts to manage