

## Pre-term Fiber Quick-Turn Program

---

The Quick-Turn Fiber program is designed to meet the needs of customers who have immediate requirements for fiber jumpers, MPO arrays and trunks. The Quick-Turn Fiber program is intended to supplement the current pre-term fiber provisioning process. This is a service provided to CommScope customers to address last minute pre-term fiber requirements, as well as fiber pre-term assemblies required to accommodate moves, adds, and changes.

### PLACE AN ORDER

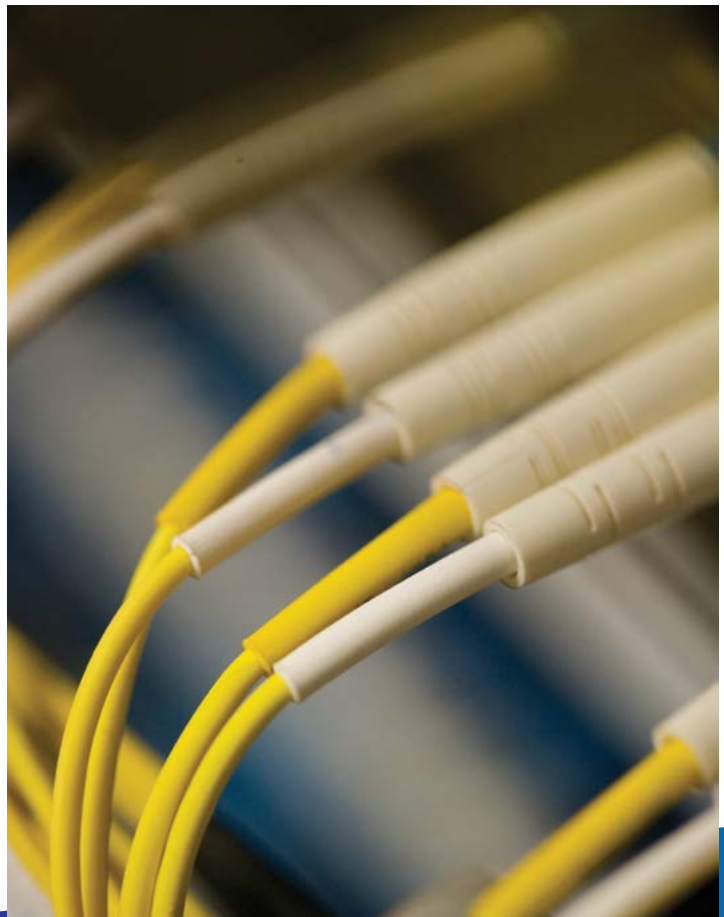
- Orders are placed from distributor via fax at 1-877-Qik-Cord (1-877-745-2673) or email at [quickturn@commscope.com](mailto:quickturn@commscope.com)
- Maximum order quantity is 70 fiber jumpers and 20 trunks or arrays per order.
- Targeted to ship max order quantities within 2-3 days after customer submits the Quick-Turn order; lead time may vary based on availability.
- For additional quantities, please call Customer Service. Lead time subject to availability.

### PRICING

- Quick-Turn fiber orders qualify for the same project pricing discount.

### SHIPPING

- Customer pays for shipping charges. Actual shipping time depends on the shipping option selected by the customer. Clear shipping instructions, including: ship to address, shipping options, and account number (FedEx, UPS. Etc.), must be included in the purchase order



**Fax: 1-877-Qik-Cord**

**Email: [quickturn@commscope.com](mailto:quickturn@commscope.com)**

# Quick-Turn Product Listing

## Jumpers

### INSTRUCTIONS

Choose your configuration, add length and quantities. Complete the MIDs in Column "A"

FULLY CONFIGURED MID	DESCRIPTION			
A	B	C	D	E
		LEN	M or Ft.	Qty
<b>Jumpers (duplex LC-LC)</b>				
FEXLCLC42-MX_ _ _ _	LazrSPEED® 550 LC to LC, Fiber Patch Cord, 1.6 mm Duplex, Riser, Aqua			
FDXLCLC42-MX_ _ _ _	LazrSPEED® 550 LC to LC, Fiber Patch Cord, 1.6 mm Duplex, Plenum, Aqua			
FDWLCLC42-JX_ _ _ _	TeraSPEED® LC to LC, Fiber Patch Cord, 1.6 mm Duplex, Plenum, Yellow			
FEWLCLC42-JX_ _ _ _	TeraSPEED® LC to LC, Fiber Patch Cord, 1.6 mm Duplex, Riser, Yellow			
<b>Jumpers (duplex LC-SC)</b>		LEN	M or Ft.	Qty
FEWLCSC42-JX_ _ _ _	TeraSPEED® LC to SC, Fiber Patch Cord, 1.6 mm Duplex, Riser, Yellow			
FDWLCSC42-JX_ _ _ _	TeraSPEED® LC to SC, Fiber Patch Cord, 1.6 mm Duplex, Plenum, Yellow			
FEXLCSC42-MX_ _ _ _	LazrSPEED® 550 LC to SC, Fiber Patch Cord, 1.6 mm Duplex, Riser, Aqua			
FDXLCSC42-MX_ _ _ _	LazrSPEED® 550 LC to SC, Fiber Patch Cord, 1.6 mm Duplex, Plenum, Aqua			
<b>Jumpers (duplex SC-SC)</b>		LEN	M or Ft.	Qty
FEWSCSC42-JX_ _ _ _	TeraSPEED® SC to SC, Fiber Patch Cord, 1.6 mm Duplex, Riser, Yellow			
FDWSCSC42-JX_ _ _ _	TeraSPEED® SC to SC, Fiber Patch Cord, 1.6 mm Duplex, Plenum, Yellow			

Fax: 1-877-Qik-Cord  
 Email: quickturn@commscope.com

# Quick-Turn Product Listing

## Arrays & Array Patchcords

### INSTRUCTIONS

Choose your configuration, add length and quantities. Complete the MIDs in Column "A"

FULLY CONFIGURED MID	DESCRIPTION	C	D	E
A	B			
<b>InstaPATCH® 360 Array Patchcords (unpinned MPO-unpinned MPO), Plenum</b>		<b>LEN</b>	<b>M or Ft.</b>	<b>Qty</b>
FQXMPMPGD-MA_ _ _ _	LazrSPEED® 550 MPO (female) to MPO (female), 12-Fiber, Plenum, Aqua			
FQZMPMPGD-MA_ _ _ _	LazrSPEED® 300 MPO (female) to MPO (female), 12-Fiber, Plenum, Aqua			
<b>InstaPATCH® 360 Array Patchcords (unpinned MPO-pinned MPO), Plenum</b>		<b>LEN</b>	<b>M or Ft.</b>	<b>Qty</b>
FQXMPMXGD-MA_ _ _ _	LazrSPEED® 550 MPO (female) to MPO (male), 12-Fiber, Plenum, Aqua			
FQZMPMXGD-MA_ _ _ _	LazrSPEED® 300 MPO (female) to MPO (male), 12-Fiber, Plenum, Aqua			
<b>InstaPATCH® 360 QSFP Arrays (unpinned MPO-8LC), Plenum</b>		<b>LEN</b>	<b>M or Ft.</b>	<b>Qty</b>
FQXQPLCG8-MD_ _ _ _	LazrSPEED® 550 MPO (female) to LC, QSFP Array Cord, 8-Fiber, Plenum, Aqua, BO=12"			
FQXQPLCG8-ME_ _ _ _	LazrSPEED® 550 MPO (female) to LC, QSFP Array Cord, 8-Fiber, Plenum, Aqua, BO=24"			
FQXQPLCG8-MH_ _ _ _	LazrSPEED® 550 MPO (female) to LC, QSFP Array Cord, 8-Fiber, Plenum, Aqua, BO=48"			
<b>InstaPATCH® 360 QSFP Arrays (pinned MPO-8LC), Plenum</b>		<b>LEN</b>	<b>M or Ft.</b>	<b>Qty</b>
FQXQXLCG8-MD_ _ _ _	LazrSPEED® 550 MPO (male) to LC, QSFP Array Cord, 8-Fiber, Plenum, Aqua, BO=12"			
FQXQXLCG8-ME_ _ _ _	LazrSPEED® 550 MPO (male) to LC, QSFP Array Cord, 8-Fiber, Plenum, Aqua, BO=24"			
FQXQXLCG8-MH_ _ _ _	LazrSPEED® 550 MPO (male) to LC, QSFP Array Cord, 8-Fiber, Plenum, Aqua, BO=48"			

Fax: 1-877-Qik-Cord  
 Email: quickturn@commscope.com

# Quick-Turn Product Listing

## Array Fanouts

### INSTRUCTIONS

Choose your configuration, add length and quantities. Complete the MIDs in Column "A"

FULLY CONFIGURED MID	DESCRIPTION			
A	B	C	D	E
<b>InstaPATCH® 360 Array Fanout (unpinned MPO-12LC), Plenum</b>		<b>LEN</b>	<b>M or Ft.</b>	<b>Qty</b>
FQXMPLCGD-MD_ _ _ _	LazrSPEED® 550 MPO (female) to LC, Array Fanout, 12-Fiber, Plenum, Aqua, BO=12"			
FQXMPLCGD-ME_ _ _ _	LazrSPEED® 550 MPO (female) to LC, Array Fanout, 12-Fiber, Plenum, Aqua, BO=24"			
FQXMPLCGD-MH_ _ _ _	LazrSPEED® 550 MPO (female) to LC, Array Fanout, 12-Fiber, Plenum, Aqua, BO=48"			
FQZMPLCGD-MD_ _ _ _	LazrSPEED® 300 MPO (female) to LC, Array Fanout, 12-Fiber, Plenum, Aqua, BO=12"			
FQZMPLCGD-ME_ _ _ _	LazrSPEED® 300 MPO (female) to LC, Array Fanout, 12-Fiber, Plenum, Aqua, BO=24"			
FQZMPLCGD-MH_ _ _ _	LazrSPEED® 300 MPO (female) to LC, Array Fanout, 12-Fiber, Plenum, Aqua, BO=48"			
<b>InstaPATCH® 360 Array Fanout (pinned MPO-12LC), Plenum</b>		<b>LEN</b>	<b>M or Ft.</b>	<b>Qty</b>
FQXMPLCGD-MD_ _ _ _	LazrSPEED® 550 MPO (male) to LC, Array Fanout, 12-Fiber, Plenum, Aqua, BO=12"			
FQXMPLCGD-ME_ _ _ _	LazrSPEED® 550 MPO (male) to LC, Array Fanout, 12-Fiber, Plenum, Aqua, BO=24"			
FQXMPLCGD-MH_ _ _ _	LazrSPEED® 550 MPO (male) to LC, Array Fanout, 12-Fiber, Plenum, Aqua, BO=48"			
FQZMPLCGD-MD_ _ _ _	LazrSPEED® 300 MPO (male) to LC, Array Fanout, 12-Fiber, Plenum, Aqua, BO=12"			
FQZMPLCGD-ME_ _ _ _	LazrSPEED® 300 MPO (male) to LC, Array Fanout, 12-Fiber, Plenum, Aqua, BO=24"			
FQZMPLCGD-MH_ _ _ _	LazrSPEED® 300 MPO (male) to LC, Array Fanout, 12-Fiber, Plenum, Aqua, BO=48"			

Fax: 1-877-Qik-Cord  
 Email: [quickturn@commscope.com](mailto:quickturn@commscope.com)

# Quick-Turn Product Listing

## Trunk Cables

### INSTRUCTIONS

Choose your configuration, add length and quantities. Complete the MIDs in Column "A"

FULLY CONFIGURED MID	DESCRIPTION	C	D	E
A	B	LEN	M or Ft.	Qty
<b>InstaPATCH® 360 Pre-terminated Trunk Cable, Plenum with Gland Option</b>		<b>LEN</b>	<b>M or Ft.</b>	<b>Qty</b>
FGXMPMPAD-MB_ _ _ _	LazrSPEED® 550 MPO (female) to MPO (female), 12-Fiber, Plenum, Aqua			
FGXMPMPAF-MB_ _ _ _	LazrSPEED® 550 MPO (female) to MPO (female), 24-Fiber, Plenum, Aqua			
FGXMPMPAH-MB_ _ _ _	LazrSPEED® 550 MPO (female) to MPO (female), 48-Fiber, Plenum, Aqua			
FGXMPMPAK-MB_ _ _ _	LazrSPEED® 550 MPO (female) to MPO (female), 72-Fiber, Plenum, Aqua			
FGXMPMPAL-MB_ _ _ _	LazrSPEED® 550 MPO (female) to MPO (female), 96-Fiber, Plenum, Aqua			
FGXMPMPAM-MB_ _ _ _	LazrSPEED® 550 MPO (female) to MPO (female), 144-Fiber, Plenum, Aqua			
FGZMPMPAD-MB_ _ _ _	LazrSPEED® 300 MPO (female) to MPO (female), 12-Fiber, Plenum, Aqua			
FGZMPMPAF-MB_ _ _ _	LazrSPEED® 300 MPO (female) to MPO (female), 24-Fiber, Plenum, Aqua			
FGWMPMPAD-JB_ _ _ _	TeraSPEED® MPO (female) to MPO (female), 12-Fiber, Plenum, Yellow			
FGWMPMPAF-JB_ _ _ _	TeraSPEED® MPO (female) to MPO (female), 24-Fiber, Plenum, Yellow			
FGWMPMPAH-JB_ _ _ _	TeraSPEED® MPO (female) to MPO (female), 48-Fiber, Plenum, Yellow			
FGWMPMPAK-JB_ _ _ _	TeraSPEED® MPO (female) to MPO (female), 72-Fiber, Plenum, Yellow			
FGWMPMPAL-JB_ _ _ _	TeraSPEED® MPO (female) to MPO (female), 96-Fiber, Plenum, Yellow			
FGWMPMPAM-JB_ _ _ _	TeraSPEED® MPO (female) to MPO (female), 144-Fiber, Plenum, Yellow			
<b>InstaPATCH® 360 Pre-terminated Trunk Cable, Plenum without Gland Option</b>		<b>LEN</b>	<b>M or Ft.</b>	<b>Qty</b>
FGXMPMPAD-MA_ _ _ _	LazrSPEED® 550 MPO (female) to MPO (female), 12-Fiber, Plenum, Aqua			
FGXMPMPAF-MA_ _ _ _	LazrSPEED® 550 MPO (female) to MPO (female), 24-Fiber, Plenum, Aqua			
FGXMPMPAH-MA_ _ _ _	LazrSPEED® 550 MPO (female) to MPO (female), 48-Fiber, Plenum, Aqua			
FGXMPMPAK-MA_ _ _ _	LazrSPEED® 550 MPO (female) to MPO (female), 72-Fiber, Plenum, Aqua			
FGXMPMPAL-MA_ _ _ _	LazrSPEED® 550 MPO (female) to MPO (female), 96-Fiber, Plenum, Aqua			
FGXMPMPAM-MA_ _ _ _	LazrSPEED® 550 MPO (female) to MPO (female), 144-Fiber, Plenum, Aqua			
FGZMPMPAD-MA_ _ _ _	LazrSPEED® 300 MPO (female) to MPO (female), 12-Fiber, Plenum, Aqua			
FGZMPMPAF-MA_ _ _ _	LazrSPEED® 300 MPO (female) to MPO (female), 24-Fiber, Plenum, Aqua			
FGWMPMPAD-JA_ _ _ _	TeraSPEED® MPO (female) to MPO (female), 12-Fiber, Plenum, Yellow			
FGWMPMPAF-JA_ _ _ _	TeraSPEED® MPO (female) to MPO (female), 24-Fiber, Plenum, Yellow			
FGWMPMPAH-JA_ _ _ _	TeraSPEED® MPO (female) to MPO (female), 48-Fiber, Plenum, Yellow			
FGWMPMPAK-JA_ _ _ _	TeraSPEED® MPO (female) to MPO (female), 72-Fiber, Plenum, Yellow			
FGWMPMPAL-JA_ _ _ _	TeraSPEED® MPO (female) to MPO (female), 96-Fiber, Plenum, Yellow			
FGWMPMPAM-JA_ _ _ _	TeraSPEED® MPO (female) to MPO (female), 144-Fiber, Plenum, Yellow			

Fax: 1-877-Qik-Cord

Email: [quickturn@commscope.com](mailto:quickturn@commscope.com)

# Quick-Turn Product Listing

## Trunk Cables

### INSTRUCTIONS

Choose your configuration, add length and quantities. Complete the MIDs in Column "A"

FULLY CONFIGURED MID	DESCRIPTION			
A	B	C	D	E
		LEN	M or Ft.	Qty
<b>InstaPATCH® 360 Pre-terminated Trunk Cable, Plenum with Gland Option AND Pulling Grip</b>				
FGXMPMPAD-MC_ _ _ _	LazrSPEED® 550 MPO (female) to MPO (female), 12-Fiber, Plenum, Aqua			
FGXMPMPAF-MC_ _ _ _	LazrSPEED® 550 MPO (female) to MPO (female), 24-Fiber, Plenum, Aqua			
FGXMPMPAH-MC_ _ _ _	LazrSPEED® 550 MPO (female) to MPO (female), 48-Fiber, Plenum, Aqua			
FGXMPMPAK-MC_ _ _ _	LazrSPEED® 550 MPO (female) to MPO (female), 72-Fiber, Plenum, Aqua			
FGXMPMPAL-MC_ _ _ _	LazrSPEED® 550 MPO (female) to MPO (female), 96-Fiber, Plenum, Aqua			
FGXMPMPAM-MC_ _ _ _	LazrSPEED® 550 MPO (female) to MPO (female), 144-Fiber, Plenum, Aqua			
FGZMPMPAD-MC_ _ _ _	LazrSPEED® 300 MPO (female) to MPO (female), 12-Fiber, Plenum, Aqua			
FGZMPMPAF-MC_ _ _ _	LazrSPEED® 300 MPO (female) to MPO (female), 24-Fiber, Plenum, Aqua			
FGWMPMPAD-JC_ _ _ _	TeraSPEED® MPO (female) to MPO (female), 12-Fiber, Plenum, Yellow			
FGWMPMPAF-JC_ _ _ _	TeraSPEED® MPO (female) to MPO (female), 24-Fiber, Plenum, Yellow			
FGWMPMPAH-JC_ _ _ _	TeraSPEED® MPO (female) to MPO (female), 48-Fiber, Plenum, Yellow			
FGWMPMPAK-JC_ _ _ _	TeraSPEED® MPO (female) to MPO (female), 72-Fiber, Plenum, Yellow			
FGWMPMPAL-JC_ _ _ _	TeraSPEED® MPO (female) to MPO (female), 96-Fiber, Plenum, Yellow			
FGWMPMPAM-JC_ _ _ _	TeraSPEED® MPO (female) to MPO (female), 144-Fiber, Plenum, Yellow			

Fax: 1-877-Qik-Cord  
 Email: [quickturn@commscope.com](mailto:quickturn@commscope.com)

# Shipping guidelines

---

## SHIPPING

- The customer pays shipping charges.
- Clear shipping instructions, including: ship to address, shipping options, and account number (FedEx, UPS, Etc.), must be included in the purchase order.

## ADDITIONAL SHIPPING LOGISTICS

- Suggestion for Customer carrier request questions: (US ship from to US destination)
  - FedEx Small Parcel – requires carrier account (9 digit #), is it a recipient or third party account and service level of one of each of the following service levels: Priority Overnight, Standard Overnight, FedEx 2 day, FedEx Express Saver.
  - FedEx Air Freight – on larger orders, ask up front if customer has a weight limit or limit of quantity of cartons before requiring palletization. If shipment requires air freight service, request carrier, valid air freight account (9 digit #), is it a recipient or third party account, and one of the following service levels: FedEx 1 Day Air Freight, FedEx 2 Day Air Freight, FedEx 3 Day Air Freight.
  - UPS (Brown) Small parcel - require carrier account (6 digit, usually alpha numeric), is it a recipient or third party account, bill to zip code for third party account (sometimes required for UPS to create label if consignee zip is different than bill to account zip) and service level of one of each of the following service levels: UPS Next Day Air, UPS 2nd day Air, UPS 3 Day Select.
  - UPS Supply Chain Solutions (UPS Air Freight division) - require carrier account (9 digit), bill to zip code for account (sometimes required for UPS to create label if consignee zip is different than bill to account zip) and service level of one of each of the following service levels: UPS Next Day Air Freight, UPS 2nd Day Air Freight, UPS 3 Day Air Freight.

	CARTON	SPOOL	WOODED REEL	WEIGHT 1000 FT.
12 Fiber	<=130 Ft.	131-999 Ft.	>1000 Ft.	20 lbs.
24 Fiber	<=100 Ft.	101-999 Ft.	>1000 Ft.	25 lbs.
48 Fiber	<=100 Ft.	101-999 Ft.	>1000 Ft.	60 lbs.
96 Fiber	<=100 Ft.	085-500 Ft.	>500 Ft.	60 lbs. @ 501 Ft.
144 Fiber	<=65 Ft.	066-265 Ft.	>266 Ft.	60 lbs. @ 266 Ft.

- The guide on length limits will keep the size of packaging required to hold product within a small parcel transportation category. If customer orders various lengths, customer may receive multiple small cartons. This is a packaging question based upon vendor capability.
- Black spool dimensions are: 15in. X 9.25 in. X 15in.
- Small wooden reel dimensions are: 24.75 in. X 12.25 in. X 24.75 in.
- Black Plastic Spool or Small Wooden reel \*\*310 Wooden reel\*\* increment length limit before Air Freight is required
- 310 wooden reel cannot be shipped small parcel. It would be required to be placed on a pallet and AIR FREIGHT division information would be required from customer at time SO is placed.

Fax: 1-877-Qik-Cord

Email: [quickturn@commscope.com](mailto:quickturn@commscope.com)

---

CommScope pushes the boundaries of communications technology with game-changing ideas and ground-breaking discoveries that spark profound human achievement. We collaborate with our customers and partners to design, create and build the world's most advanced networks. It is our passion and commitment to identify the next opportunity and realize a better tomorrow. Discover more at [commscope.com](http://commscope.com)

---

[commscope.com](http://commscope.com)

Visit our website or contact your local CommScope representative for more information.

© 2018 CommScope, Inc. All rights reserved.

Unless otherwise noted, all trademarks identified by ® or ™ are registered trademarks, respectively, of CommScope, Inc. This document is for planning purposes only and is not intended to modify or supplement any specifications or warranties relating to CommScope products or services. CommScope is committed to the highest standards of business integrity and environmental sustainability with a number of CommScope's facilities across the globe certified in accordance with international standards, including ISO 9001, TL 9000, and ISO 14001. Further information regarding CommScope's commitment can be found at [www.commscope.com/About-Us/Corporate-Responsibility-and-Sustainability](http://www.commscope.com/About-Us/Corporate-Responsibility-and-Sustainability).

BR-1127001-EN (10/18)