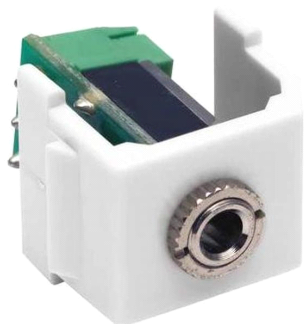


SL Series Mini-Headphone Insert, 3.5 mm stereo, screw terminal, almond



Product Classification

Portfolio	NETCONNECT®
Product Series	SL Series
Product Type	Insert
Regional Availability	EMEA

General Specifications

Color	Light almond
Interface Type	3.5 mm jack
Package Quantity	1
Total Ports, quantity	1

Dimensions

Depth	27.09 mm 1.07 in
Height	23.04 mm 0.91 in
Width	14.48 mm 0.57 in

Mechanical Specifications

Outlet Orientation	Flat
---------------------------	------

Regulatory Compliance/Certifications

Agency
RoHS 2011/65/EU

Classification
Compliant

