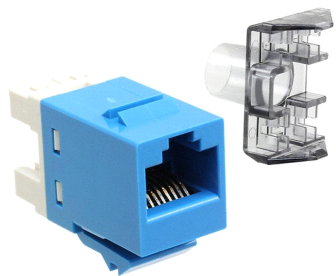


SL110 Series Modular Jack, RJ45, category 6, T568A/T568B, unshielded, without dust cover, blue



Product Classification

Portfolio	NETCONNECT®
Product Series	SL Series
Product Type	Modular jack
Regional Availability	Asia Australia/New Zealand EMEA Latin America

Dimensions

Compatible Insulated Conductor Diameter, maximum	1.450 mm 0.057 in
Depth	30.48 mm 1.20 in
Height	16.13 mm 0.64 in
Width	14.48 mm 0.57 in

Electrical Specifications

ANSI/TIA Category	6
Safety Voltage Rating	150 Vac
Transmission Standard	ANSI/TIA-568-C.2 ISO/IEC 11801 Class E

Environmental Specifications

Flammability Rating	UL 94 V-0
Operating Temperature	-40 °C to +70 °C (-40 °F to +158 °F)
Safety Standard	CSA cUL

General Specifications

Cable Type	Unshielded
Color	Blue
Includes	Strain relief cap
Mount Type	SL Series faceplates and panels
Package Quantity	1
Packaging Type	Bag

Panel Cutout, recommended	14.78 x 20.07 mm (0.58 x 0.79 in)
Panel Thickness, recommended	1.60 mm

Mechanical Specifications

Conductor Gauge, solid	24–22 AWG
Conductor Gauge, stranded	26–24 AWG
Conductor Type	Solid Stranded
Contact Base Material	Beryllium copper
Contact Plating Material	Gold
Contact Plating Thickness	1.27 µm
Material Type	Polycarbonate
Outlet Feature	Inverted jack face
Outlet Type	Standard
Plug Insertion Life, minimum	750 times
Plug Retention Force, minimum	89 N 20 lbf
Termination Punchdowns, minimum	200 times
Termination Tool	SL Termination tool
Termination Type	IDC
Wiring	T568A T568B

Regulatory Compliance/Certifications

Agency	Classification
RoHS 2011/65/EU	Compliant
RCM	Compliant to electrical safety, EMC, EME & telecommunications requirements

