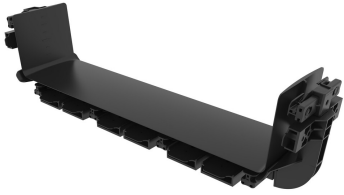


FGSB-MFAW-M



FiberGuide® Snap-Fit Junction, 4x18in, Black

Product Classification

Regional Availability	Asia Australia/New Zealand EMEA Latin America North America
Portfolio	CommScope®
Product Type	Fiber raceway joiner
Product Brand	FiberGuide®
Product Series	FGS

General Specifications

Product Feature	Snap-together design
Color	Black
Orientation	Horizontal
Section Type	Joiner section

Dimensions

Height	144 mm 5.669 in
Width	457.2 mm 18 in
Length	127 mm 5 in
System Dimensions	102 mm x 457 mm (4 in x 18 in)

Ordering Tree



Section Color

9	empty	yellow
	B	black

Section Size

10	A	4 x 4 in
	B	4 x 6 in
	F	4 x 12 in
	H	4 x 24 in

FGSB-MFAW-M

Material Specifications

Material Type Engineering Thermoplastic

Environmental Specifications

Flammability Rating CSA S143 | UL 2024 | UL 94 V-0

Halogen Characteristics Blue Angel | TCO '99 | WEEE

Safety Standard CSA | UL

Packaging and Weights

Packaging quantity 1

Weight, net 0.907 kg | 2 lb

Regulatory Compliance/Certifications

Agency	Classification
CHINA-ROHS	Below maximum concentration value
REACH-SVHC	Compliant as per SVHC revision on www.commscope.com/ProductCompliance
ROHS	Compliant
UK-ROHS	Compliant

