

4

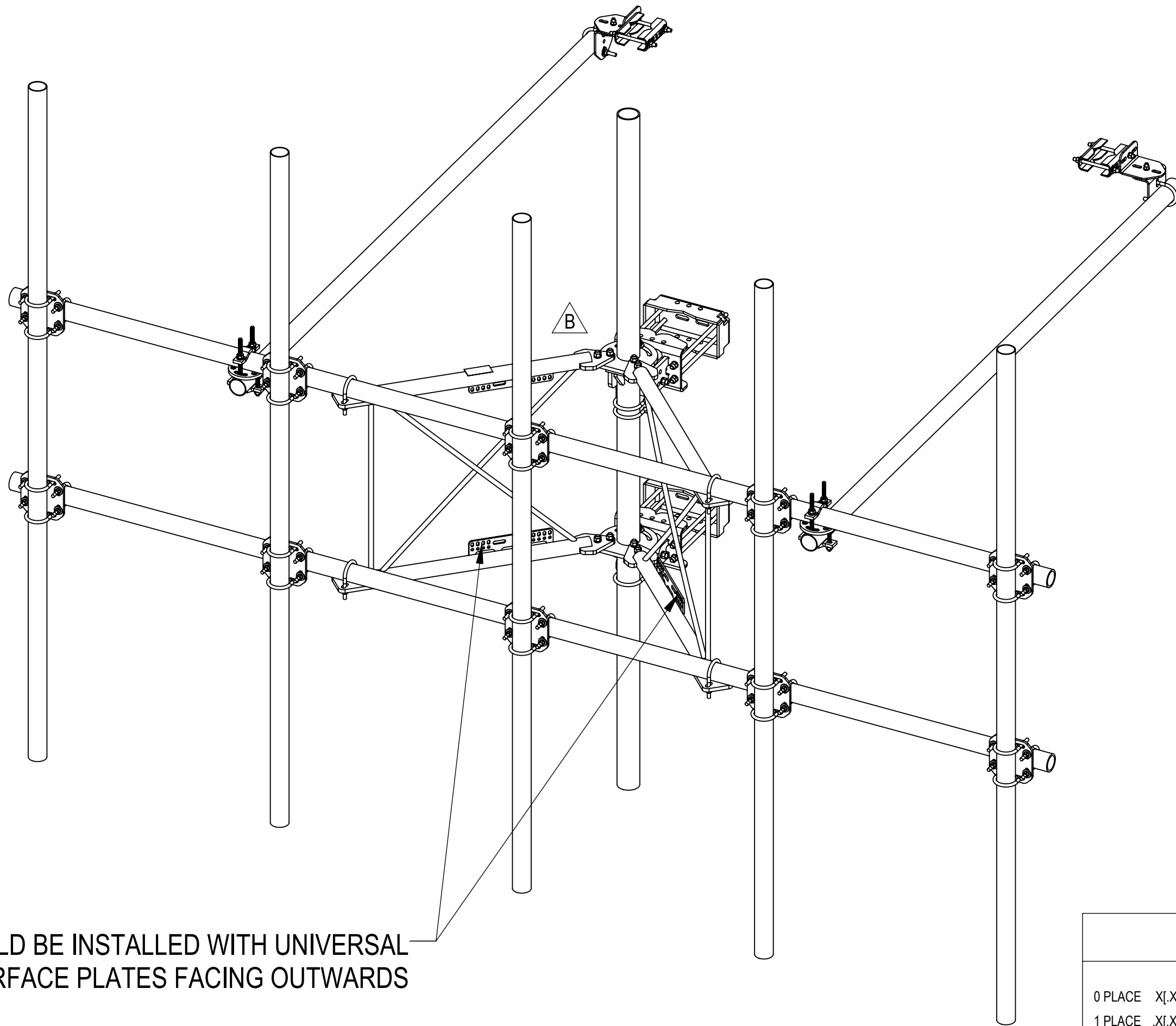
3

2

1

- 1.0 GENERAL NOTES
 - 1.1 ALL METRIC DIMENSIONS ARE IN BRACKETS [X.XX]
 - 1.2 FOR PATENT INFO: <https://www.cs-pat.com>
- 2.0 DESIGN NOTES
 - 2.1 ANY HAZARDS OR OBSTRUCTIONS TO THE CLIMBING FACILITY AND SAFETY CLIMB MUST BE IDENTIFIED PRIOR TO INSTALLING THE APPURTENANCE. ADDITIONAL PRODUCTS MAY BE REQUIRED TO MAINTAIN THE INTEGRITY OF THE SAFETY CLIMB. DURING INSTALLATION, TEMPORARY AND/OR PERMANENT PRECAUTIONARY MEASURES SHOULD BE TAKEN TO PRESERVE THE CLIMBING FACILITY AND/OR SAFETY CLIMB.
 - 2.2 UP TO 5.0° TAPER AVAILABLE ON MODELS THAT SUPPORT ADJUSTMENT.
- 3.0 MANUFACTURING/SPECIAL REQUIREMENTS
 - 3.1 TIGHTEN ALL BOLTS SECURING FLAT PLATES BY THE TURN-OF-NUT METHOD. TIGHTEN ALL U-BOLTS USING TURN-OF-NUT METHOD WITH ATTENTION TO LEAVE EQUAL DISTANCE AND EQUAL FORCE ON EACH LEG OF THE U-BOLT.
- 4.0 TEST
- 5.0 PACKAGING
 - 5.1 PACKAGING SHALL MEET COMMSCOPE REQUIREMENTS PER DOCUMENT IS-PL-3005.
 - 5.2 PRINTED DOCUMENT TO BE PLACED INSIDE POLYBAG AND THEN IN SHIPPING CONTAINER.
 - 5.3 EXTRA HARDWARE MAY BE SUPPLIED, BAGGED AND SHIPPED.

| REVISIONS | | | |
|-----------|---|-------------------|-----------------------|
| REV. | DESCRIPTION | DATE | APPROVED |
| A | INITIAL RELEASE | JL1183 24MAY24 | CB1094 40196505CMO |
| B | V-ARM SFG2292-00 (ITEM 2) WAS SFG2278; SHEET6: ADDED V-ARM DETAIL VIEW | JL1183 12JUL24 | CB1094 40200155CMO |



SHOULD BE INSTALLED WITH UNIVERSAL
INTERFACE PLATES FACING OUTWARDS

| COMMSCOPE, INC. OF NORTH CAROLINA | | | | | | | | | | | | | | | | | | | |
|---|-------------------|---|--------------------|------|-------|-----------|---------|--|-----------|------------|--|-----------|------------|--|----------|------------|--|-------|--------------|
| TOLERANCES | | SAP MATERIAL MASTER | | | | | | | | | | | | | | | | | |
| 0 PLACE | X[X] ± 0.25[6.3] | 2 PLACE | .XX[X] ± 0.06[1.5] | | | | | | | | | | | | | | | | |
| 1 PLACE | .X[X] ± 0.12[3.0] | ANGLES | ± 2° | | | | | | | | | | | | | | | | |
| FINISH | | MATERIAL | | | | | | | | | | | | | | | | | |
| | | PG,SF,15'FP,(5)120"AP | | | | | | | | | | | | | | | | | |
| UNLESS OTHERWISE SPECIFIED DIMENSIONS ARE IN INCHES INTERPRET PER ANSI Y 14.5M-1994 | | <table border="1"> <tr><th>NAME</th><th>DATE</th><th>TITLE</th></tr> <tr><td>CE JL1183</td><td>24MAY24</td><td></td></tr> <tr><td>RW JL1183</td><td>07/15/2024</td><td></td></tr> <tr><td>AD CB1094</td><td>07/18/2024</td><td></td></tr> <tr><td>RE YMENG</td><td>08/05/2024</td><td></td></tr> </table> | NAME | DATE | TITLE | CE JL1183 | 24MAY24 | | RW JL1183 | 07/15/2024 | | AD CB1094 | 07/18/2024 | | RE YMENG | 08/05/2024 | | SCALE | DOCUMENT NO. |
| NAME | DATE | TITLE | | | | | | | | | | | | | | | | | |
| CE JL1183 | 24MAY24 | | | | | | | | | | | | | | | | | | |
| RW JL1183 | 07/15/2024 | | | | | | | | | | | | | | | | | | |
| AD CB1094 | 07/18/2024 | | | | | | | | | | | | | | | | | | |
| RE YMENG | 08/05/2024 | | | | | | | | | | | | | | | | | | |
| | | 1:16 | SFG22RHDX-15-5-120 | | | | | | | | | | | | | | | | |
| SIZE | Auth Group | INSL | MODEL | | | | | | | | | | | | | | | | |
| C | | | | | | | | | | | | | | | | | | | |
| | | DRAWING | | | | | | | | | | | | | | | | | |
| VERSION | STATUS | REVISION | VERSION | | | | | | | | | | | | | | | | |
| 01 | RE | B | 01 | | | | | | | | | | | | | | | | |
| | | SHEET | | | | | | | | | | | | | | | | | |
| | | 1 OF 7 | | | | | | | | | | | | | | | | | |

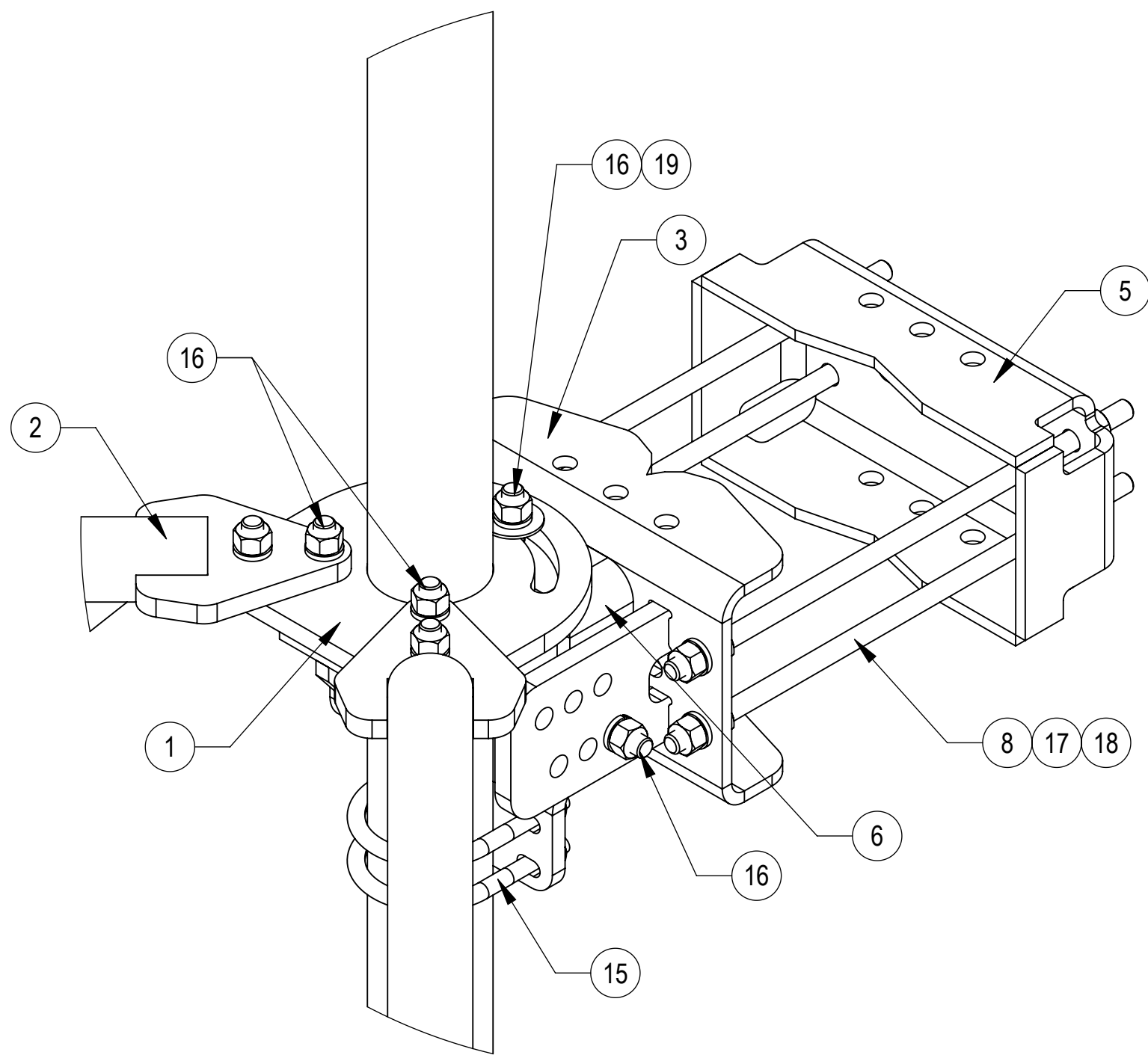
| | | |
|--------------|----------|---------|
| DENSITY | 914.98 | lbs/in³ |
| MASS | 3228.09 | lbs |
| VOLUME | 33060.60 | in³ |
| SURFACE AREA | | in² |
| HEIGHT | 120" | |
| LENGTH | 180" | |
| WIDTH | 120" | |

4

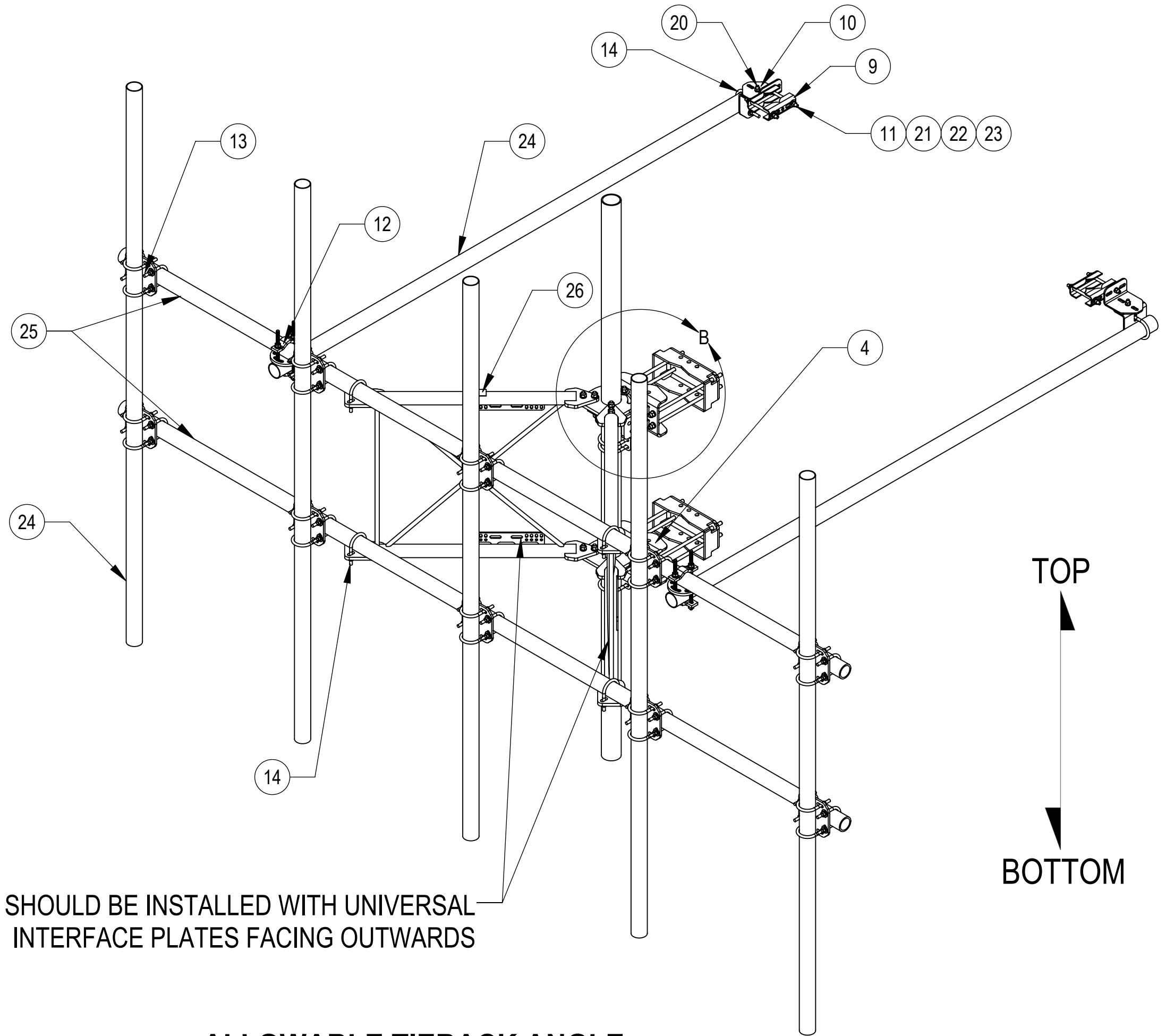
3

2

1



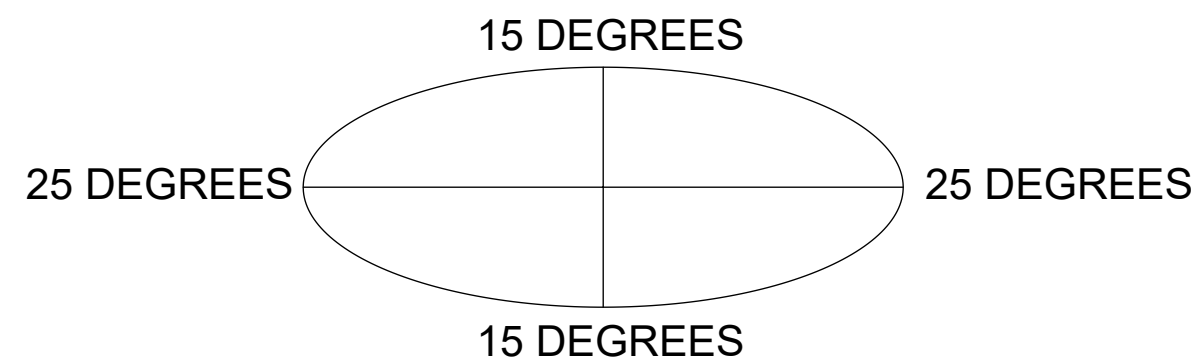
DETAIL B
SCALE 1 : 4



SHOULD BE INSTALLED WITH UNIVERSAL
INTERFACE PLATES FACING OUTWARDS

ALLOWABLE TIEBACK ANGLE

+15 DEGREES VERTICAL
±25 DEGREES HORIZONTAL

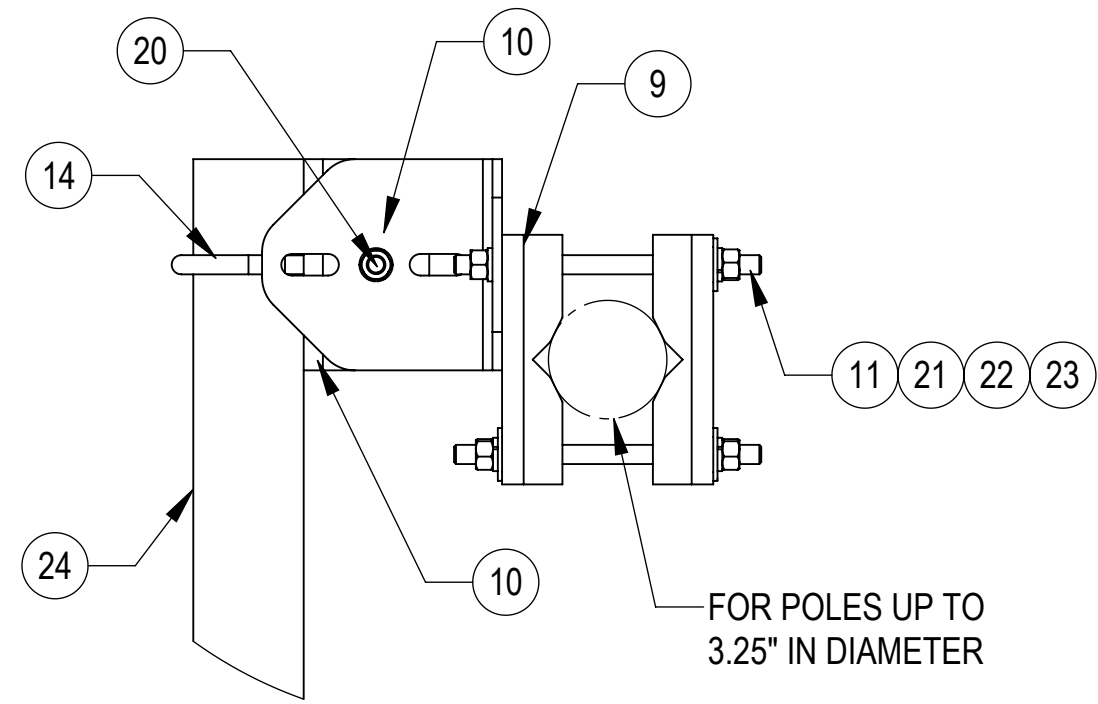
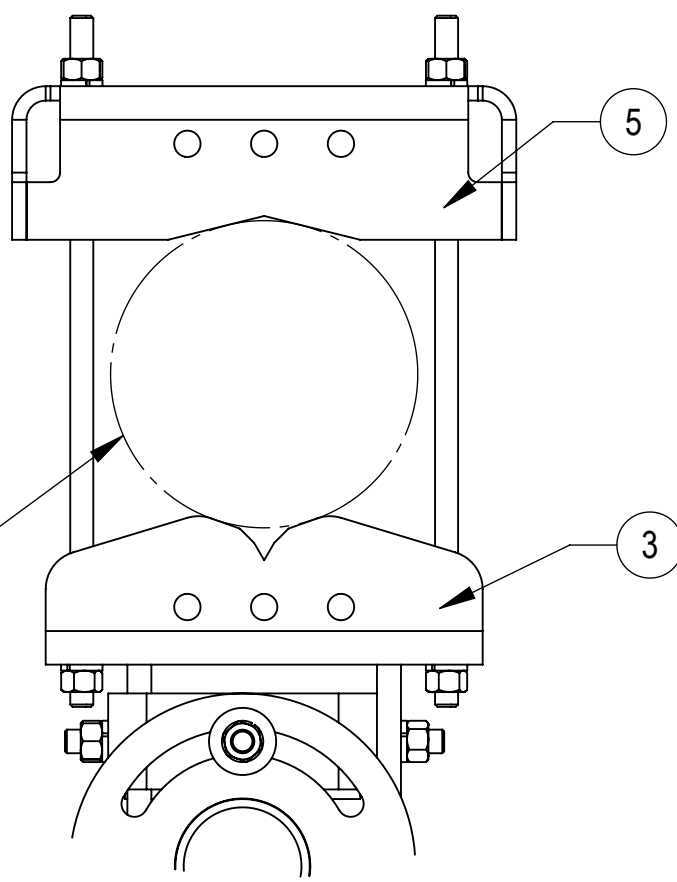
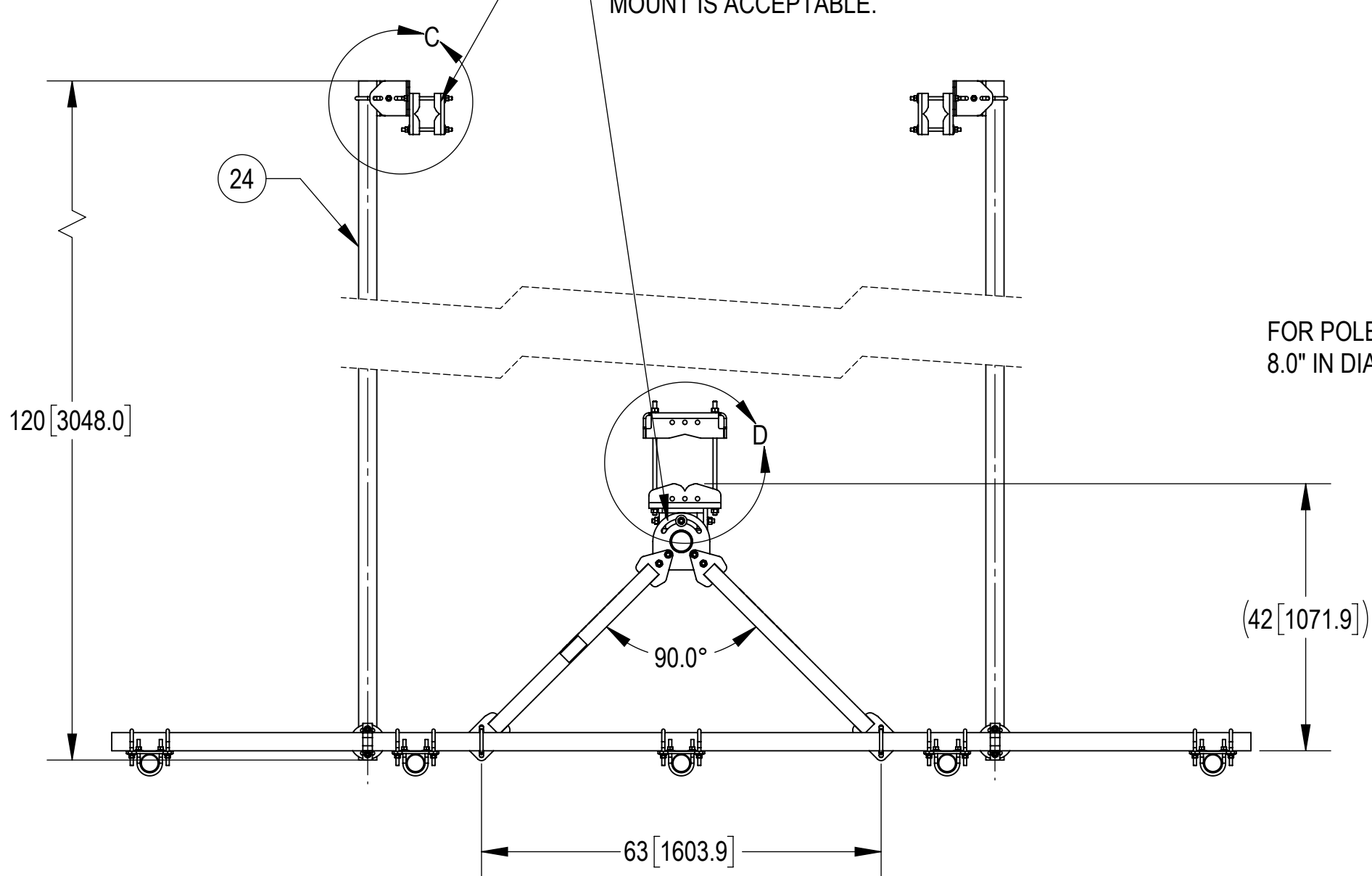


COMPONENT PART NUMBERS PROVIDED FOR ASSEMBLY PURPOSES;
INDIVIDUAL COMPONENTS MAY BE SHIPPED AS PARTS WITHIN AN INCLUDED KIT.

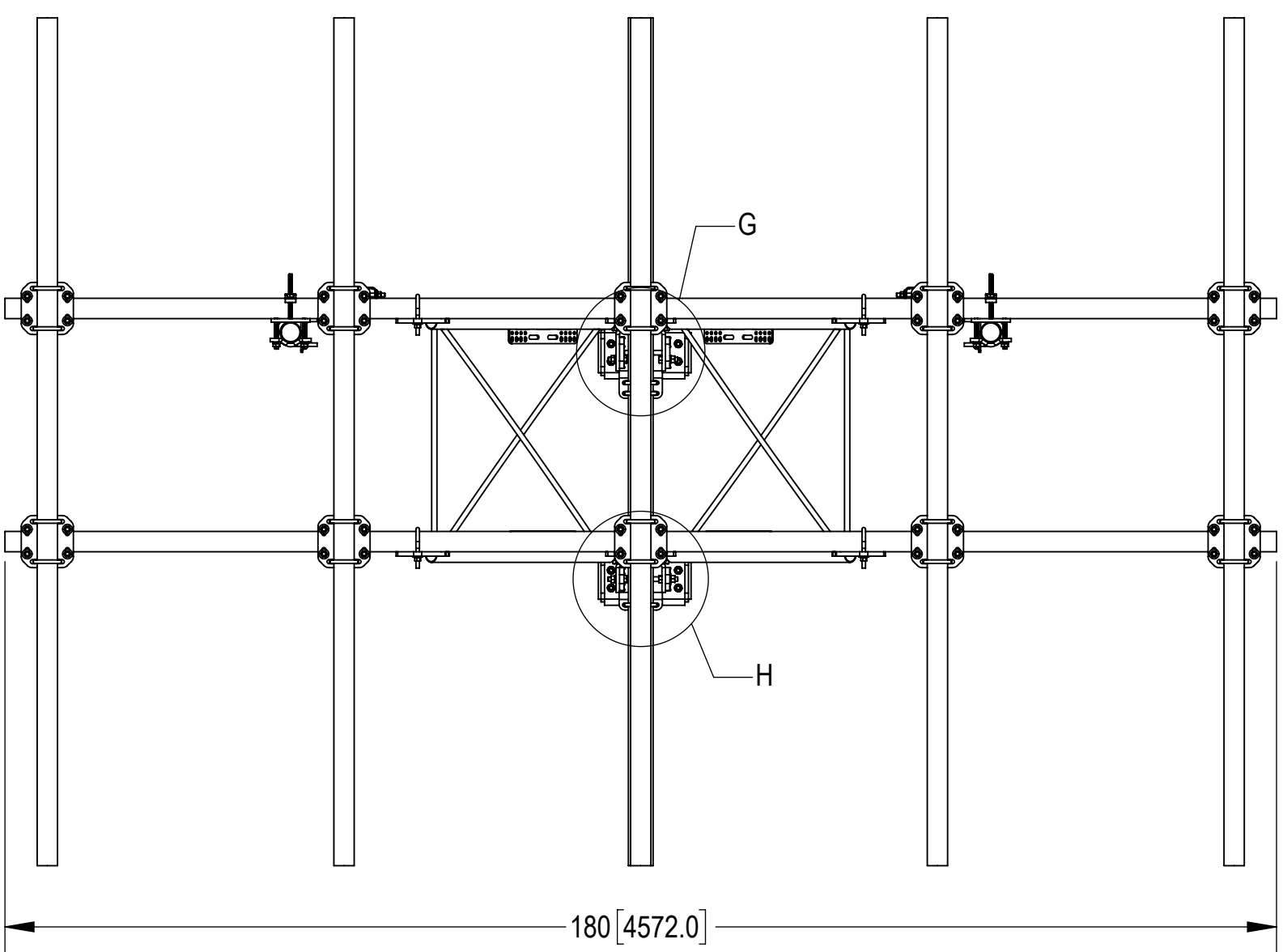
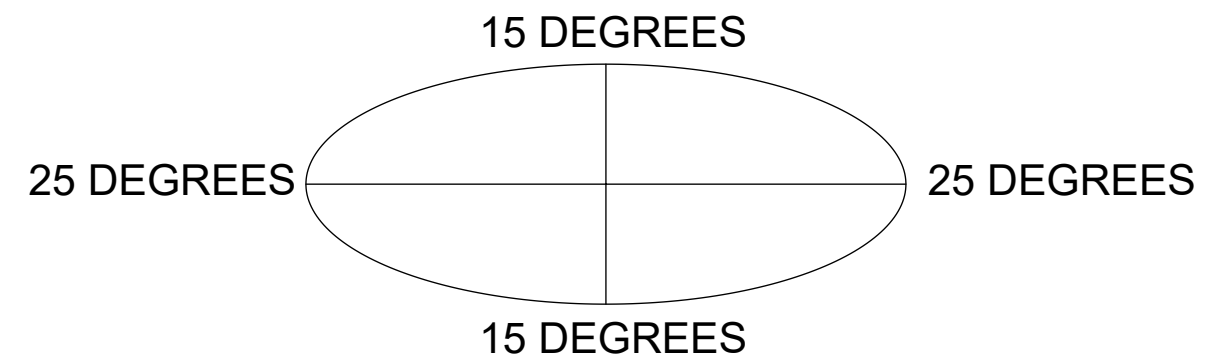
| ITEM | PART NO. | DESCRIPTION | QTY. | WEIGHT | NOTE NO. |
|------|-------------|--|------|------------|----------|
| 1 | SFG2204 | WELDMENT, BACK VERTICAL ARM MOUNT | 1 | 97.29 LBS | |
| 2 | SFG2292-00 | WELDMENT, V-ARM, SECTOR FRAME 22 | 2 | 49.69 LBS | |
| 3 | SFG2380 | WELDMENT, HD, TOP TAPER BRACKET | 1 | 22.78 LBS | |
| 4 | SFG2381 | WELDMENT, HD, LOWER TOWER LEG BRACKET | 1 | 17.42 LBS | |
| 5 | SFG2289 | G2 RRU BACK CLAMP, HD | 2 | 18.65 LBS | |
| 6 | SFG2386 | WELDMENT, SFG2 AZIMUTH BRACKET | 1 | 10.07 LBS | |
| 7 | SFG2397-00 | WELDMENT, G23 AZIMUTH BRACKET | 1 | 7.94 LBS | |
| 8 | MT-382-18 | 5/8" X 18" THREADED ROD | 8 | 1.43 LBS | |
| 9 | SAB01 | FORMED CLAMP | 4 | 1.35 LBS | |
| 10 | XAU01 | ANGLE, CROSSOVER, 1.9-3.5" X 1.9-3.5" OD | 4 | 2.98 LBS | |
| 11 | MT-379-8 | 1/2" X 8" GALV THREADED ROD | 4 | 0.45 LBS | |
| 12 | XP-R | CROSSOVER PLATE, ROUND, UP TO 3.5" OD | 2 | 6.20 LBS | |
| 13 | XP-2525 | CROSSOVER PLATE KIT, 2-7/8 OD X 2-7/8 OD | 10 | 8.37 LBS | |
| 14 | GUB-4352 | 1/2" X 3" X 5-1/4" GALV U-BOLT | 6 | 0.71 LBS | |
| 15 | GUB-4355 | 1/2" X 3-5/8" X 5" GALV U-BOLT | 3 | 0.71 LBS | |
| 16 | GB-05225 | 5/8" X 2-1/4" GALV BOLT KIT | 14 | 0.28 LBS | |
| 17 | GN-05 | 5/8" GALV HEX NUT | 24 | 0.08 LBS | |
| 18 | GWL-05 | 5/8" GALV LOCK WASHER | 16 | 0.03 LBS | |
| 19 | GWF-05 | 5/8" GALV FLAT WASHER, 1.7OD | 2 | 0.06 LBS | |
| 20 | GB-04145 | 1/2" X 1-1/2" GALV BOLT KIT | 2 | 0.13 LBS | |
| 21 | GN-04 | 1/2" GALV HEX NUT | 10 | 0.04 LBS | |
| 22 | GWL-04 | 1/2" GALV LOCK WASHER | 10 | 0.01 LBS | |
| 23 | GWF-04 | 1/2" GALV FLAT WASHER | 8 | 0.04 LBS | |
| 24 | MT546120120 | PIPE, 2.875"OD X 120" | 7 | 35.44 LBS | |
| 25 | MT546180276 | PIPE, 2.875"OD X 180" | 2 | 115.33 LBS | |
| 26 | SFG2295 | LABEL, SFG22RHDX | 1 | 0.04 LBS | |

| | | | | |
|-----------------------------------|----------------------|---|--------|-----------------|
| COMMSCOPE, INC. OF NORTH CAROLINA | | | | |
| TITLE PG,SF,15'FP,(5)120"AP | | | | |
| SIZE C | SCALE 1:16 | DOCUMENT NO. SFG22RHDX-15-5-120 | | |
| DRAWING | | VERSION | STATUS | REVISION |
| | | 01 | RE | B |
| | | | | SHEET 2 OF 7 |

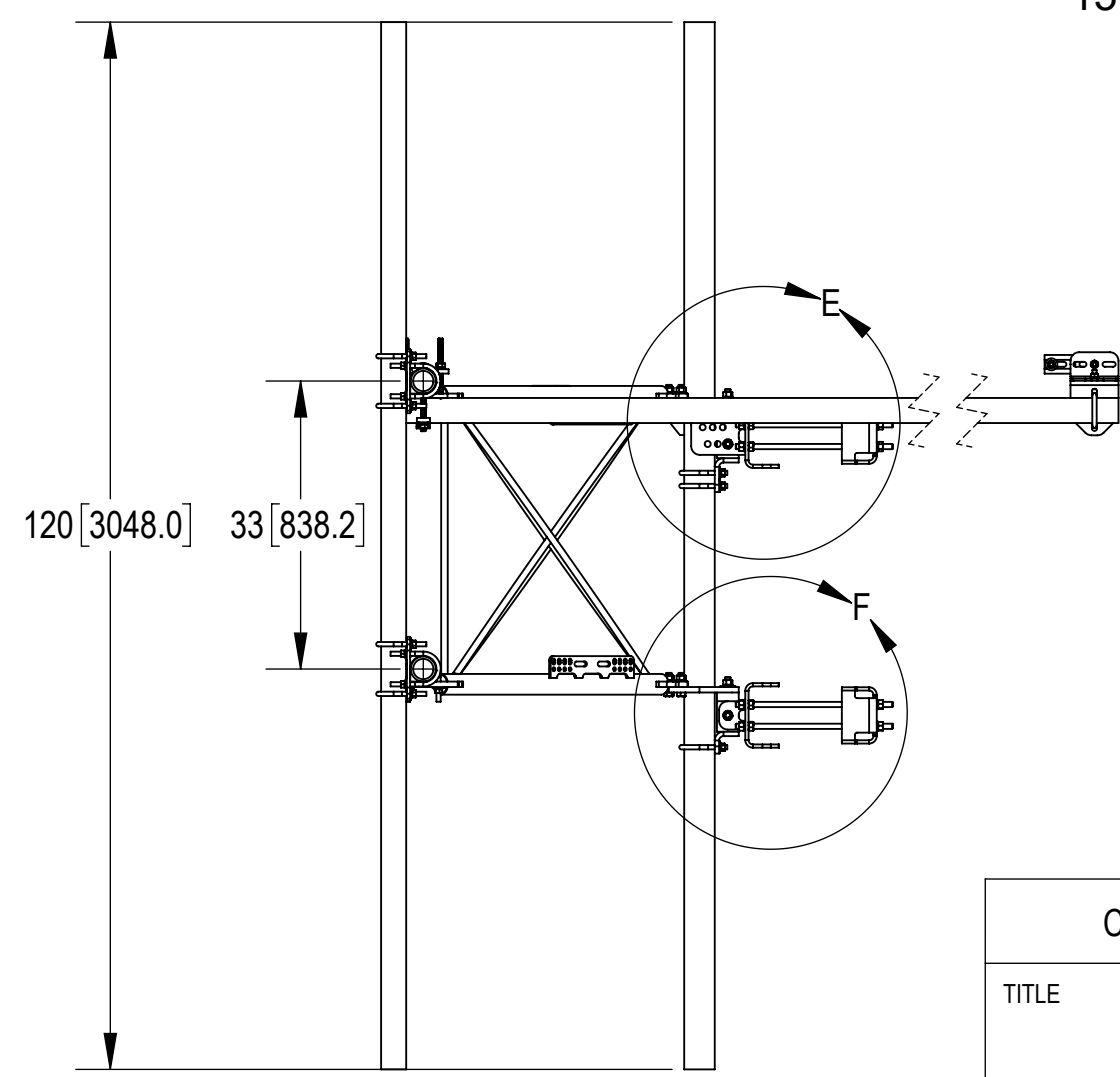
TIEBACK MUST BE CONNECTED TO A RIGID MEMBER THAT PROVIDES ADEQUATE SUPPORT WITHIN THE LIMITS NOTED IN THE TIEBACK ANGLE RANGE DETAIL. UNLESS APPROVED BY ENGINEER OF RECORD. SPINE STEM OF NEIGHBORING MOUNT IS ACCEPTABLE.



ALLOWABLE TIEBACK ANGLE
 ± 15 DEGREES VERTICAL
 ± 25 DEGREES HORIZONTAL



TOP
 BOTTOM



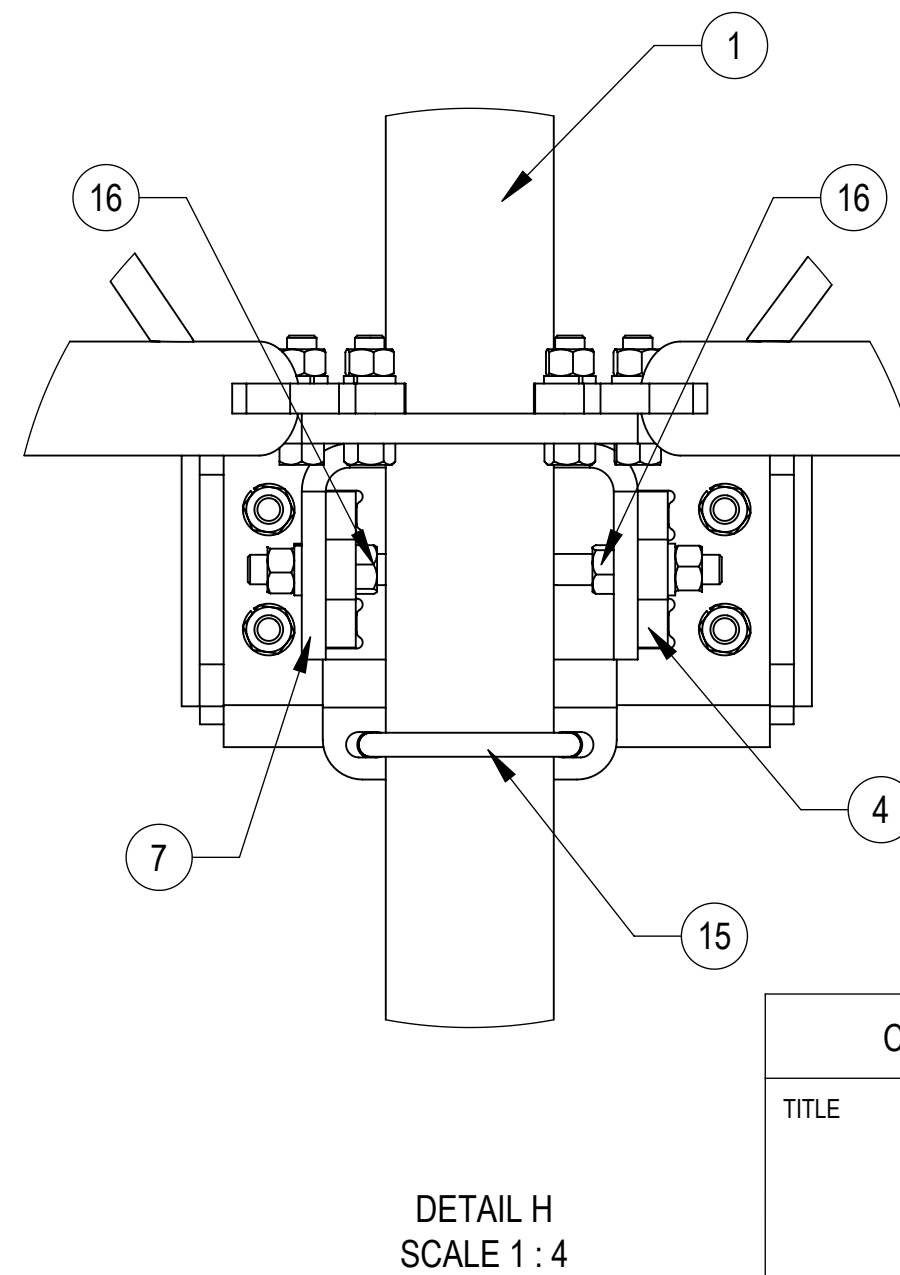
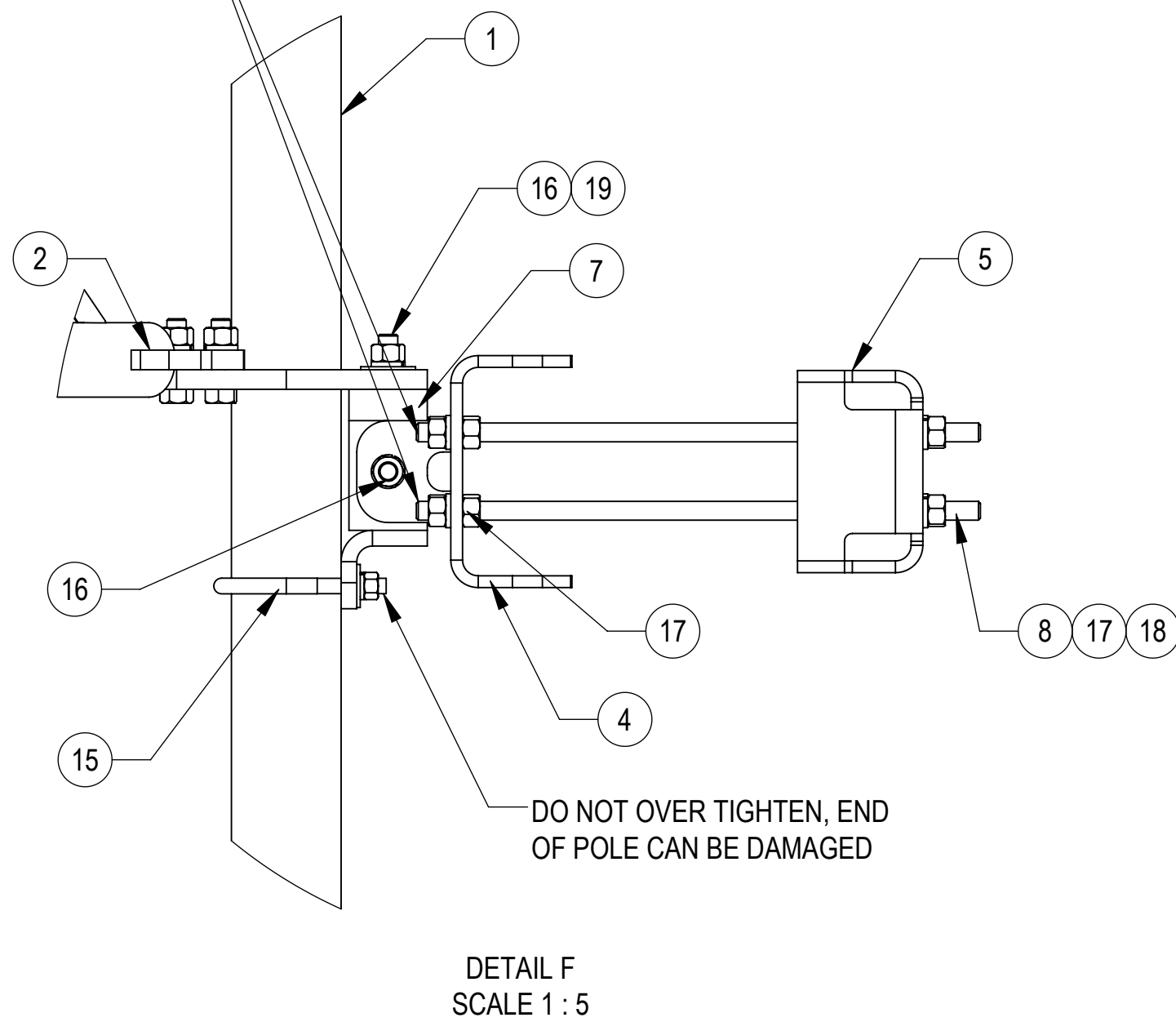
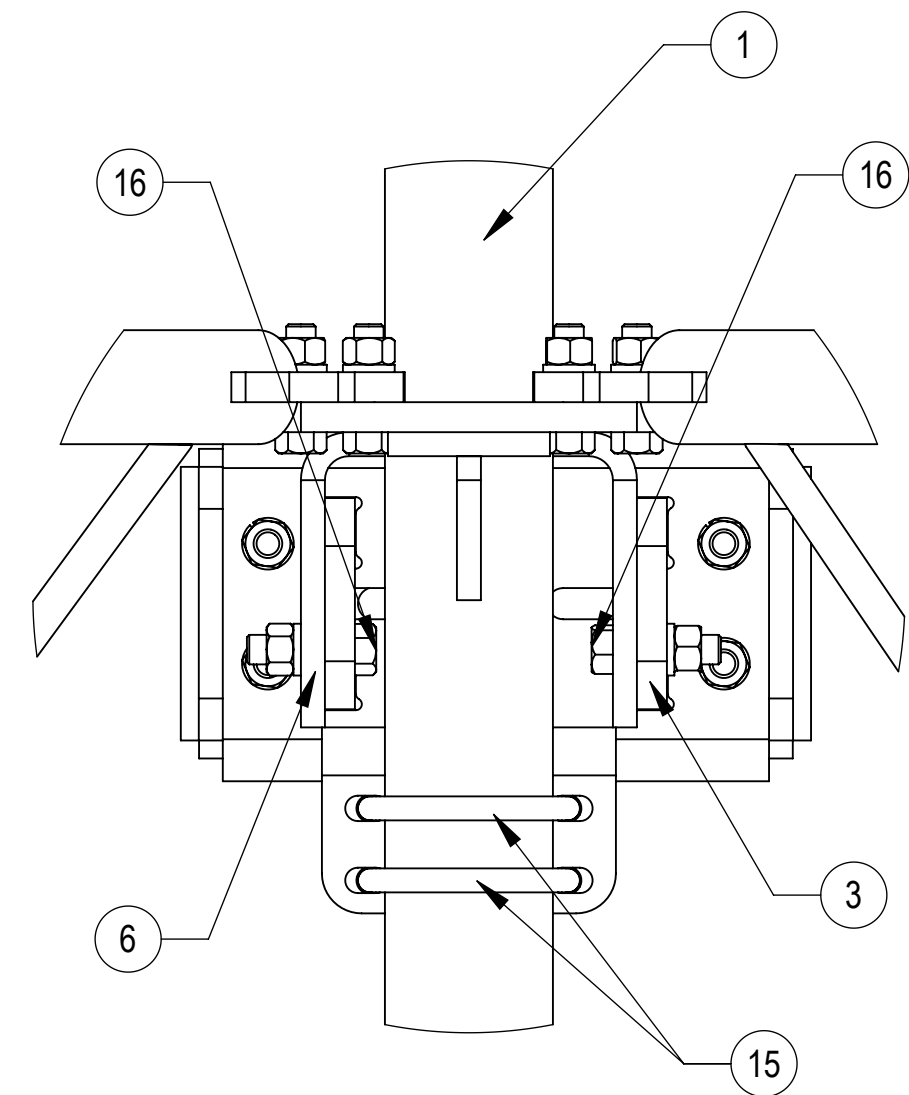
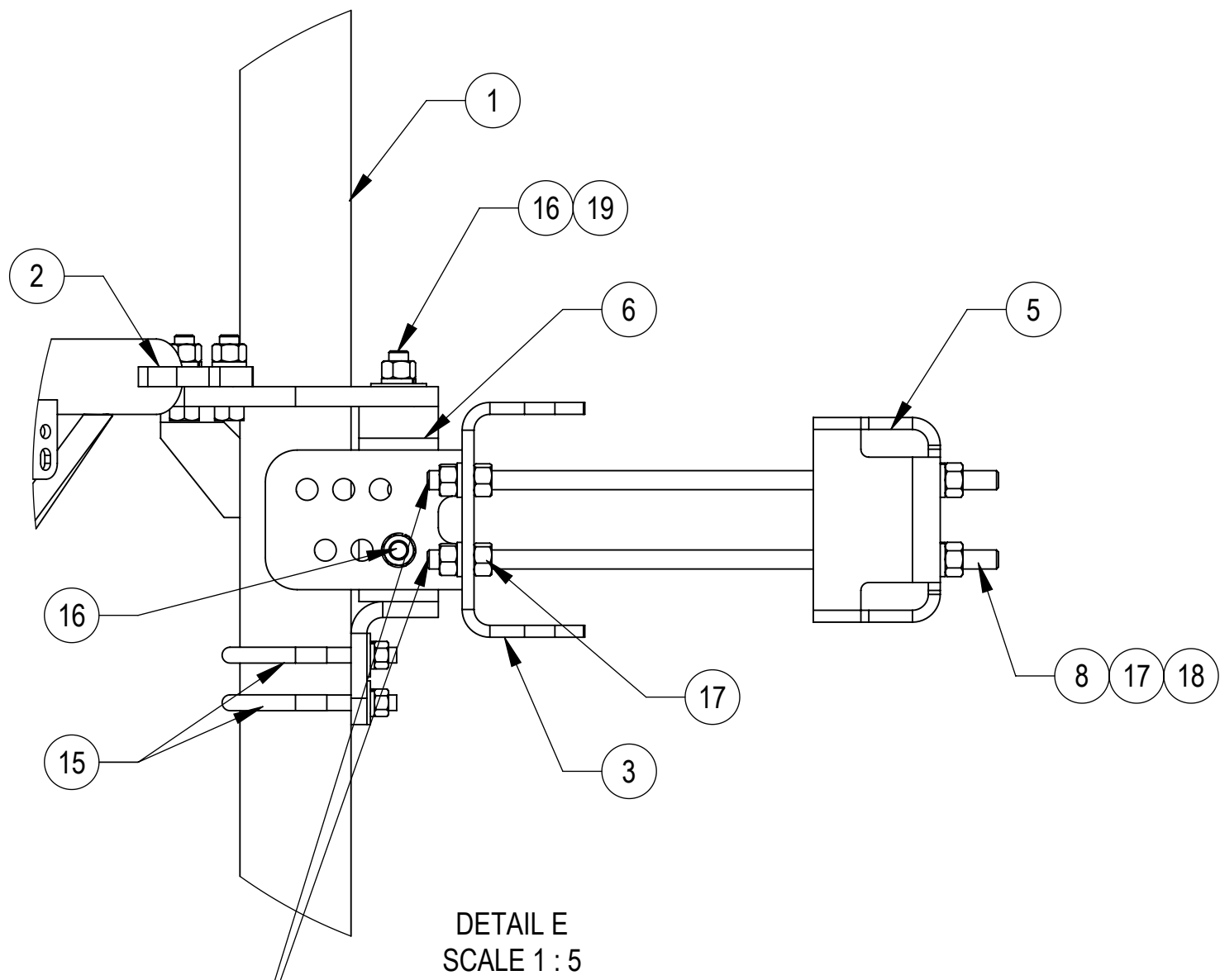
| | | | | |
|-----------------------------------|---------------|------------------------------------|--------|----------|
| COMMSCOPE, INC. OF NORTH CAROLINA | | | | |
| TITLE PG,SF,15'FP,(5)120"AP | | | | |
| SIZE C | SCALE 1:20 | DOCUMENT NO. SFG22RHDX-15-5-120 | | |
| | | DRAWING | | SHEET |
| | | VERSION | STATUS | REVISION |
| | | 01 | RE | B |
| | | | | 3 OF 7 |

4

3

2

1



| | | | | |
|-----------------------------------|---------------|------------------------------------|--------|----------|
| COMMSCOPE, INC. OF NORTH CAROLINA | | | | |
| TITLE PG,SF,15'FP,(5)120"AP | | | | |
| SIZE C | SCALE 1:20 | DOCUMENT NO. SFG22RHDH-15-5-120 | | |
| | | DRAWING | | SHEET |
| | | VERSION | STATUS | REVISION |
| | | 01 | RE | B |
| | | | | 4 OF 7 |

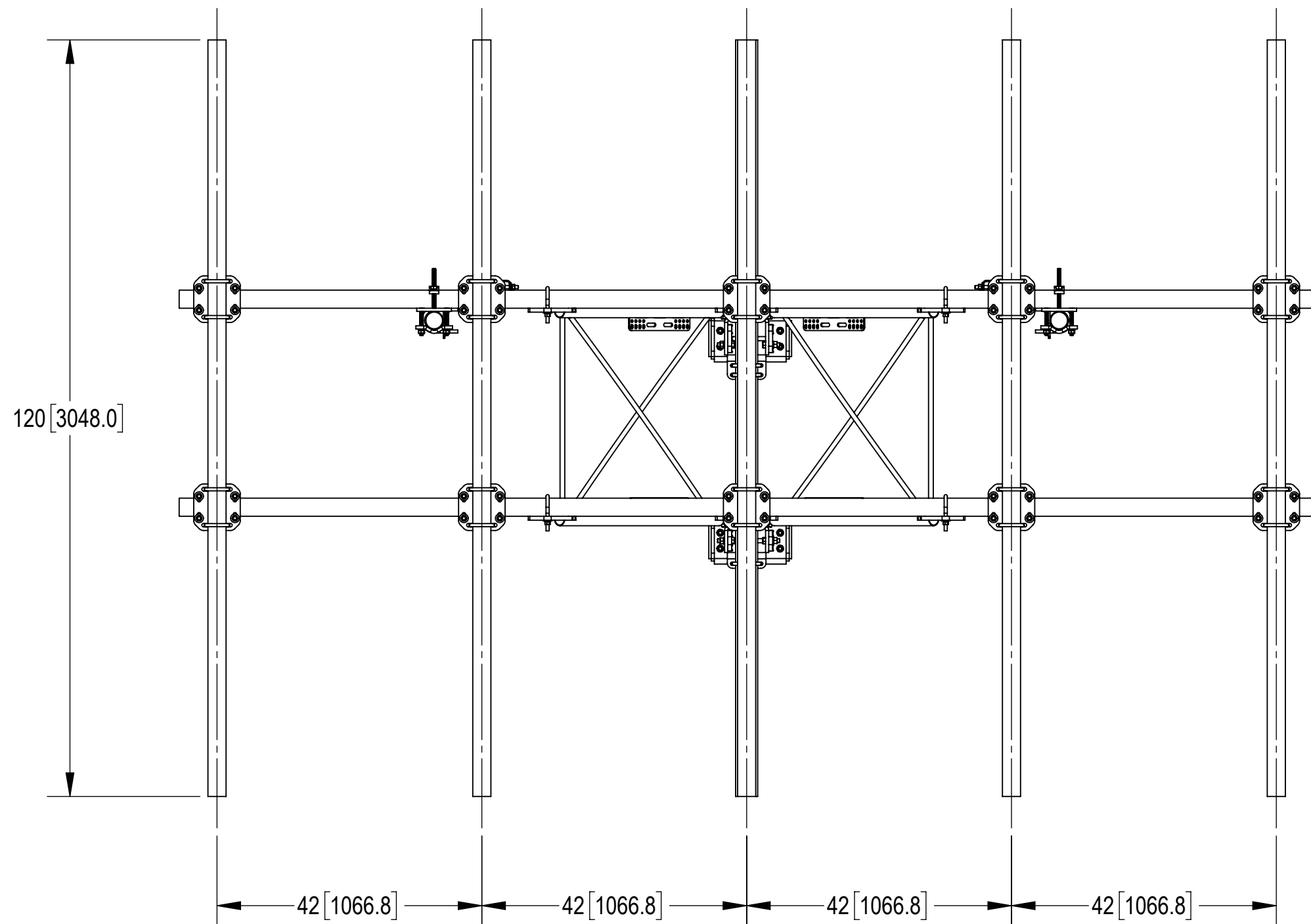
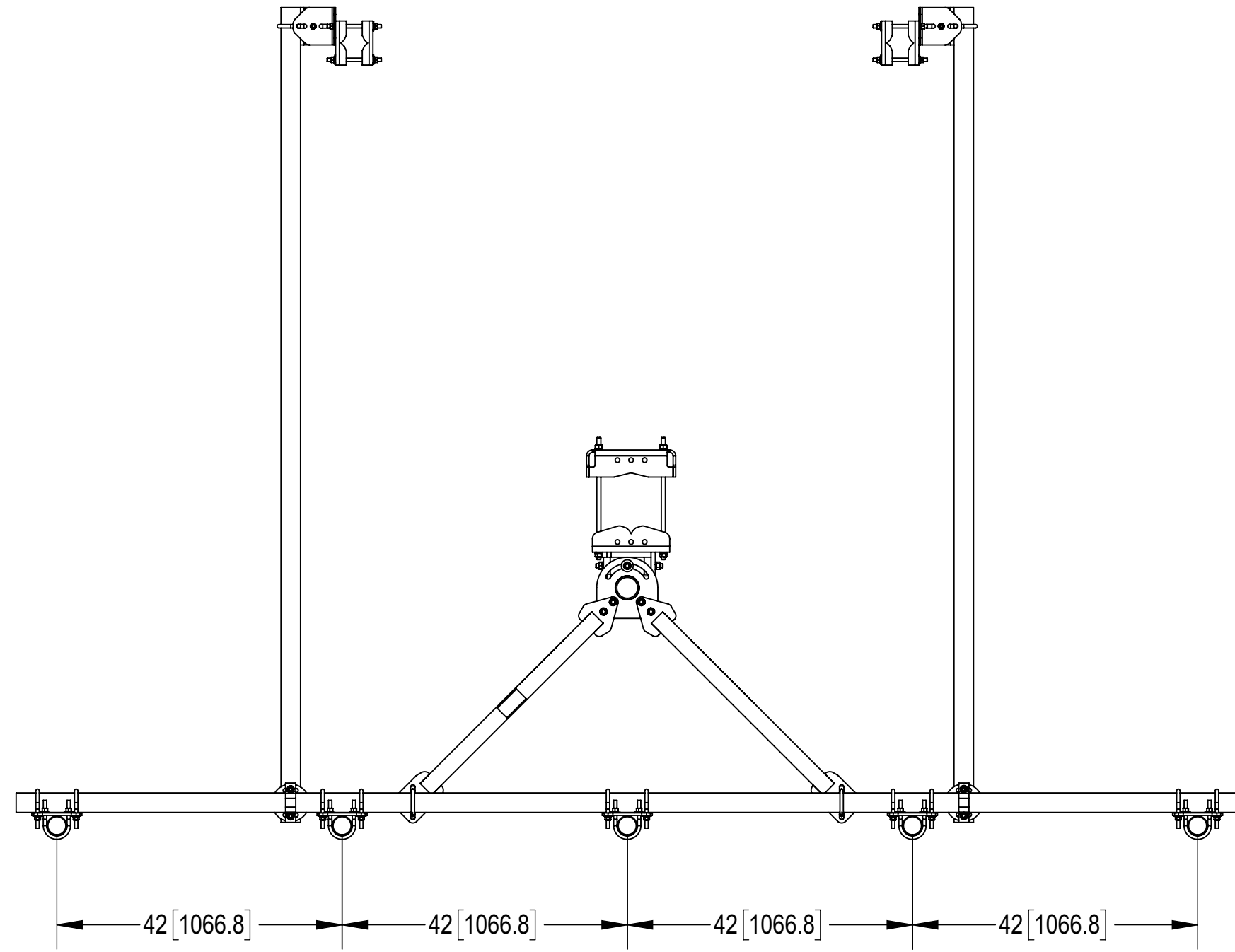
4

3

2

1

ANTENNA SPACING SHOWN



| | | | | |
|-----------------------------------|----------------------|------------------------------------|--------|----------|
| COMMSCOPE, INC. OF NORTH CAROLINA | | | | |
| TITLE PG,SF,15'FP,(5)120"AP | | | | |
| SIZE C | SCALE 1:22 | DOCUMENT NO. SFG22RHDx-15-5-120 | | |
| | | DRAWING | | SHEET |
| | | VERSION | STATUS | REVISION |
| | | 01 | RE | B |
| | | | | 5 OF 7 |

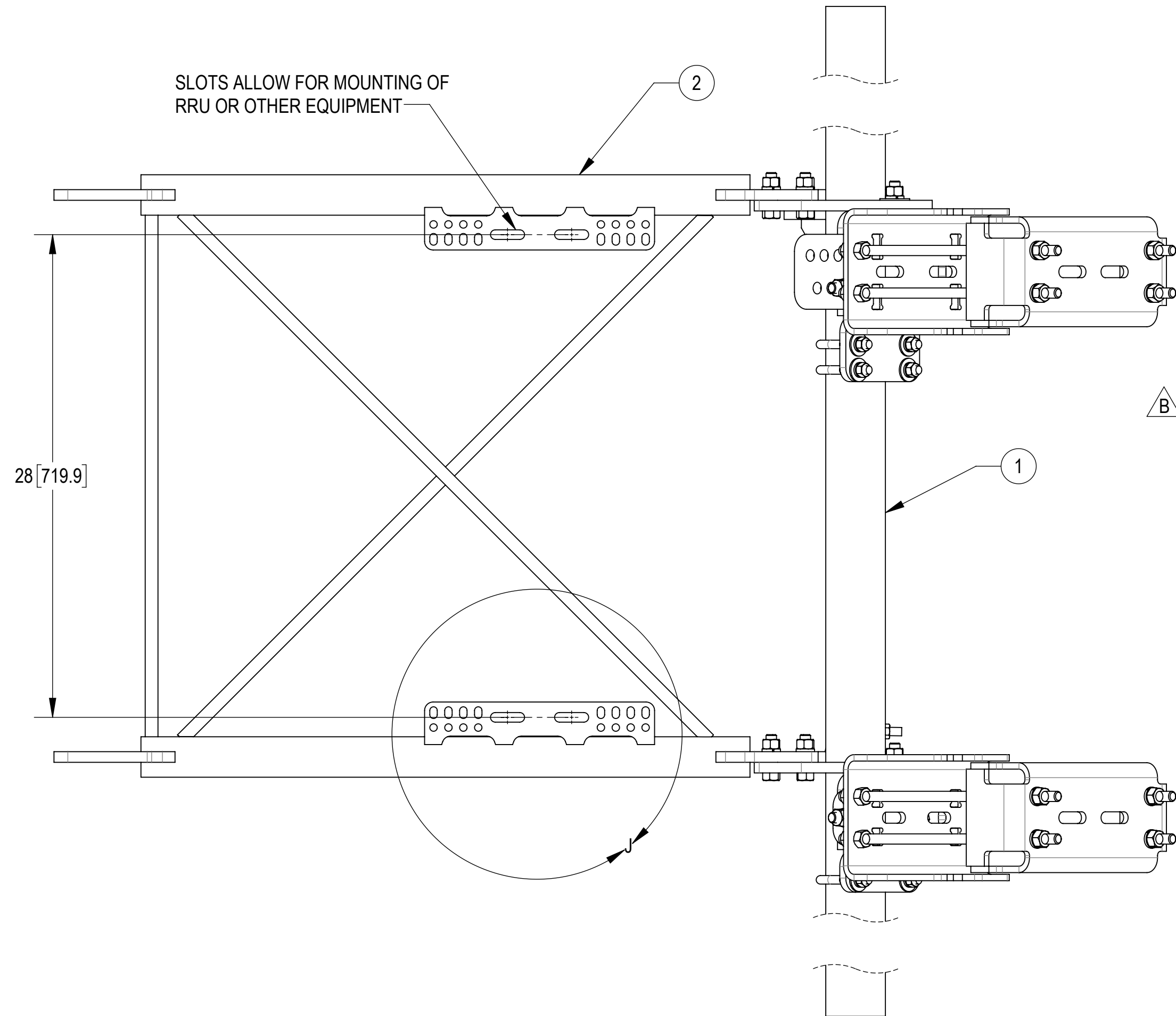
4

3

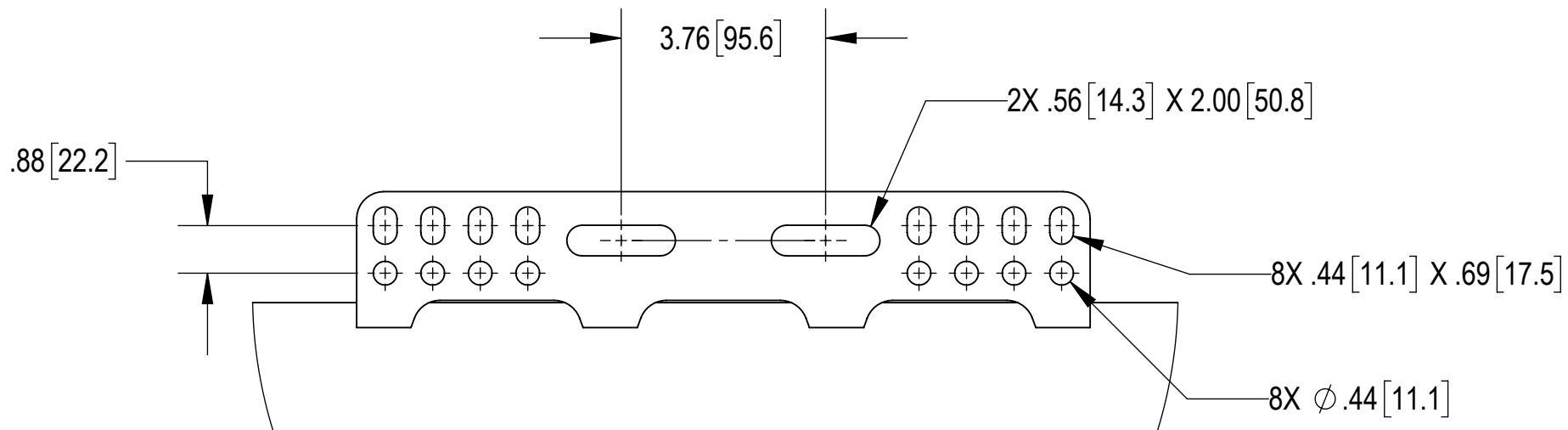
2

1

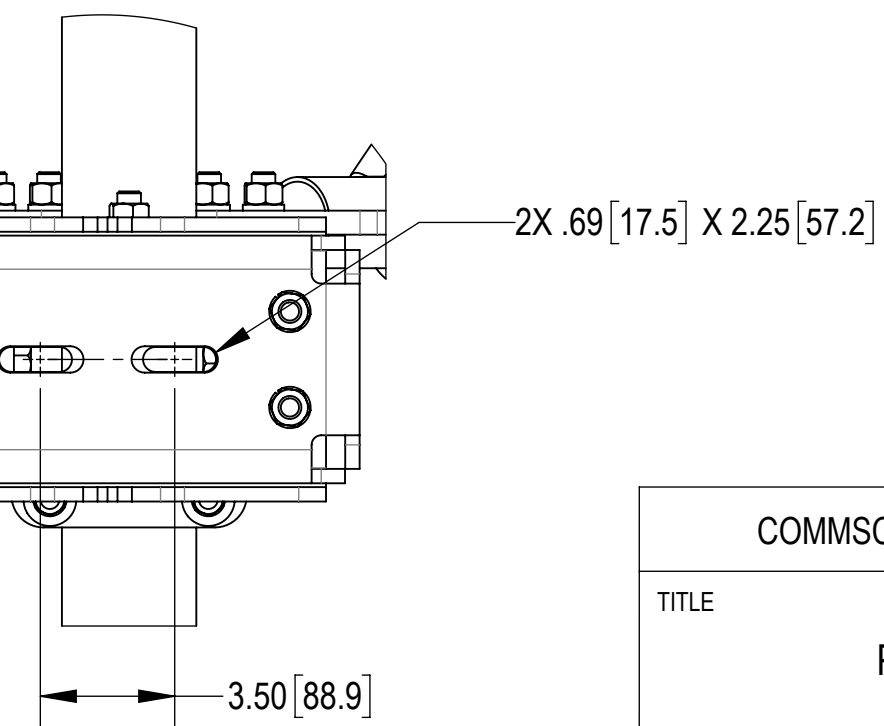
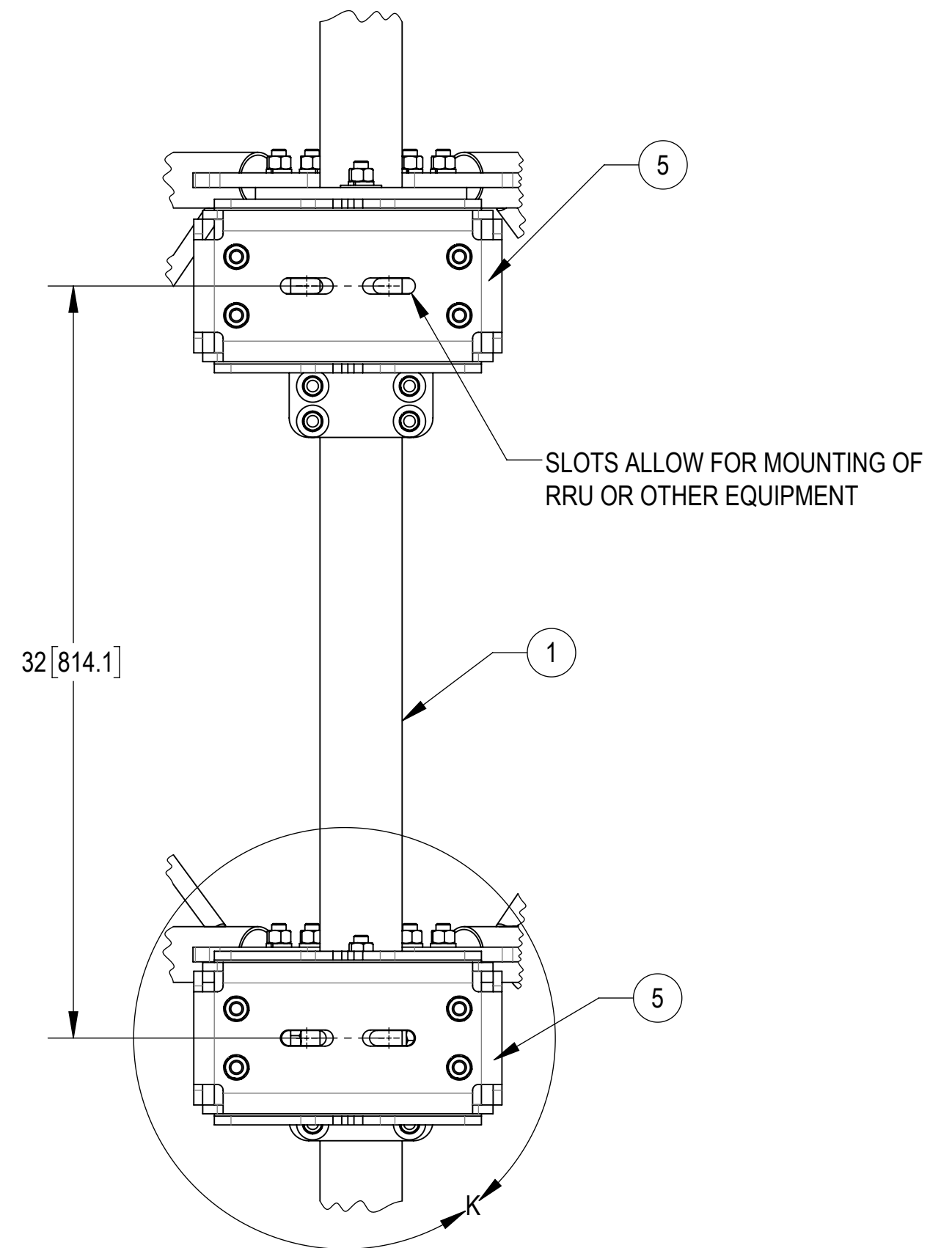
SLOTS ALLOW FOR MOUNTING OF RRU OR OTHER EQUIPMENT



SIDE VIEW



DETAIL J
SCALE 1 : 3
2 PLACES



DETAIL K
SCALE 1 : 5
2 PLACES

© 2024 CommScope, Inc. Confidential

| | | | | |
|-----------------------------------|---------------------|------------------------------------|--------|-----------------|
| COMMSCOPE, INC. OF NORTH CAROLINA | | | | |
| TITLE PG,SF,15'FP,(5)120"AP | | | | |
| SIZE C | SCALE 1:6 | DOCUMENT NO. SFG22RHDX-15-5-120 | | |
| DRAWING | | VERSION | STATUS | REVISION |
| | | 01 | RE | B |
| | | | | SHEET 6 OF 7 |

4

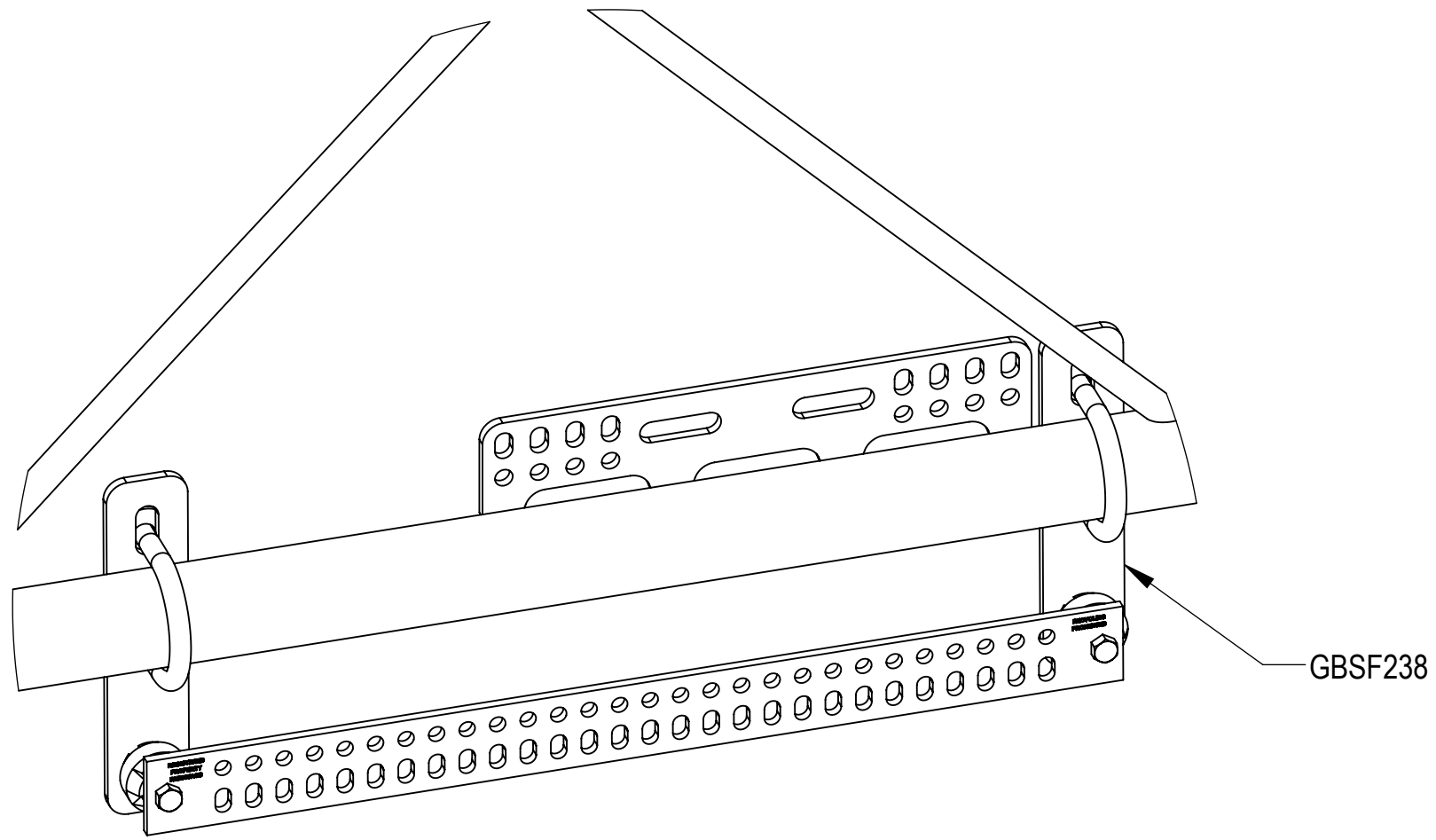
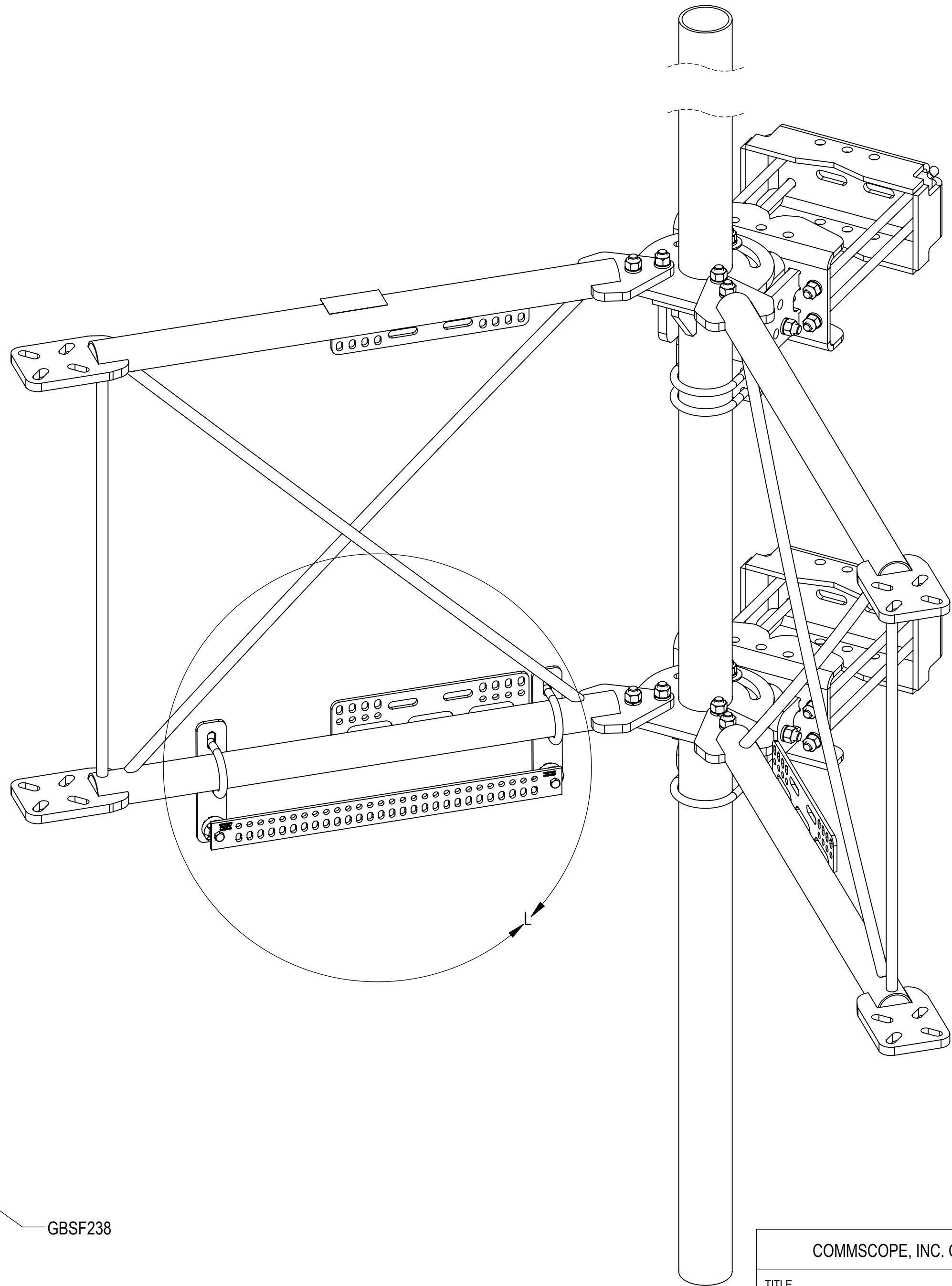
3

2

1


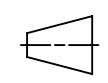
OPTIONAL ACCESSORIES:

BUS BAR MOUNT KIT GBSF238 IS WELL SUITED TO BE USED SHOULD THE NEED ARISE
NOTE THAT THIS KIT DOES NOT INCLUDE THE ISOLATORS OR BUS BAR



DETAIL L
SCALE 1:4

ISO VIEW

| | | | | |
|---|---------------------|------------------------------------|--------------|---------------|
| COMMSCOPE, INC. OF NORTH CAROLINA | | | | |
| TITLE PG,SF,15'FP,(5)120"AP | | | | |
| SIZE C | SCALE 1:6 | DOCUMENT NO. SFG22RHDX-15-5-120 | | |
|   | | DRAWING | | SHEET |
| | | VERSION 01 | STATUS RE | REVISION B |

4

3

2

1