

4

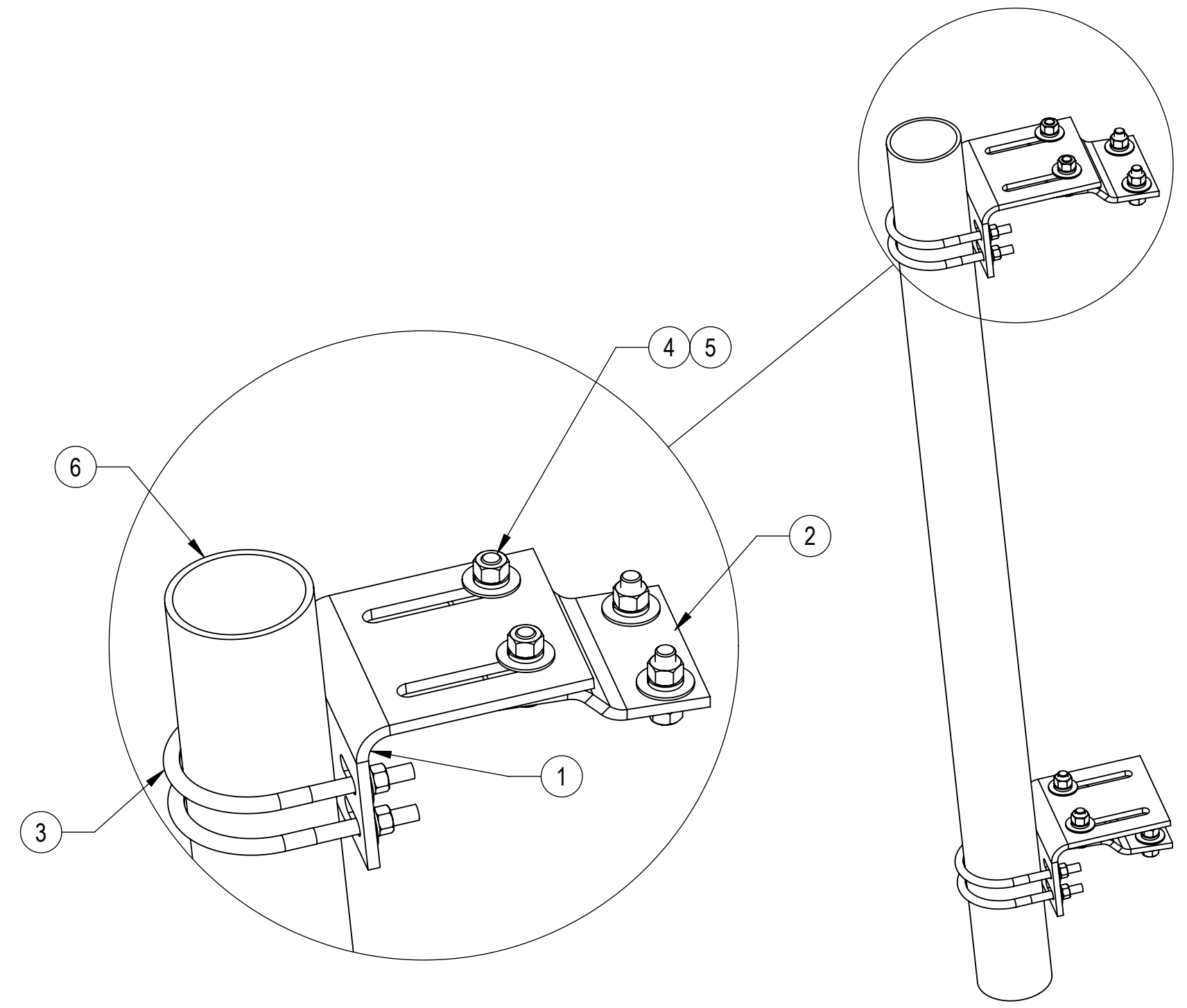
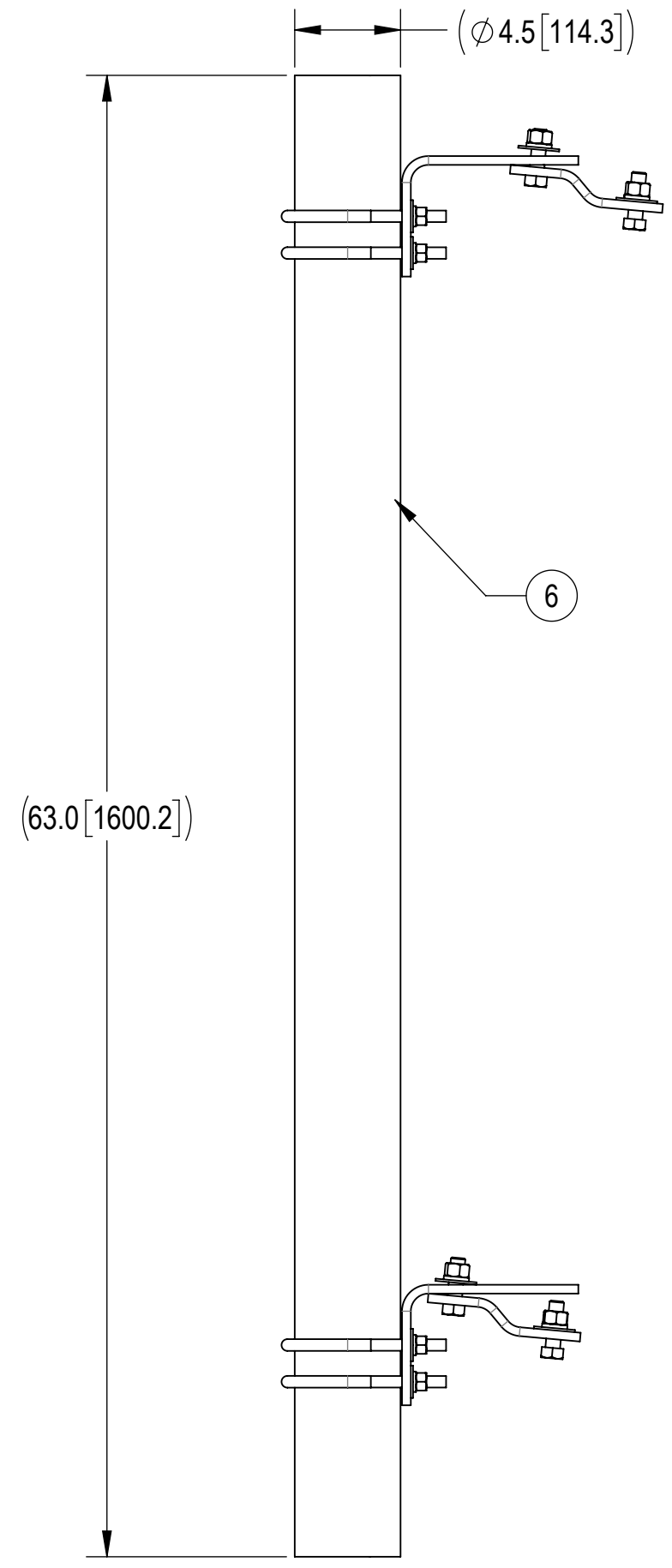
3

2

1

- 1.0 GENERAL NOTES
  - 1.1 ALL METRIC DIMENSIONS ARE IN BRACKETS [X.X]
  - 1.2 FOR PATENT INFO: <https://www.cs-pat.com>
- 2.0 DESIGN NOTES
- 3.0 MANUFACTURING/SPECIAL REQUIREMENTS
  - 3.1 TIGHTEN ALL BOLTS SECURING FLAT PLATES BY THE TURN-OF-NUT METHOD. TIGHTEN ALL U-BOLTS USING TURN-OF-NUT METHOD WITH ATTENTION TO LEAVE EQUAL DISTANCE AND EQUAL FORCE ON EACH LEG OF THE U-BOLT.
- 4.0 TEST
- 5.0 PACKAGING
  - 5.1 PACKAGING SHALL MEET COMMScope REQUIREMENTS PER DOCUMENT IS-PL-3005
  - 5.2 PRINTED DOCUMENT TO BE PLACED INSIDE POLYBAG AND THEN IN SHIPPING CONTAINER
  - 5.3 EXTRA HARDWARE MAY BE SUPPLIED, BAGGED AND SHIPPED

REVISIONS			
REV.	DESCRIPTION	DATE	APPROVED
C	INDIVIDUAL DRAWING INITIAL RELEASE	YMENG 06AUG24	YC1015 40201892CMO



COMPONENT PART NUMBERS PROVIDED FOR ASSEMBLY PURPOSES;  
INDIVIDUAL COMPONENTS MAY BE SHIPPED AS PARTS WITHIN AN INCLUDED KIT.

ITEM	PART NO.	DESCRIPTION	QTY.	WEIGHT	NOTE NO.
1	PMSL02	L-BRACKET	2	7.70 LBS	
2	PMSL01	S-BRACKET	2	4.30 LBS	
3	GUB-4456	1/2" X 4-5/8" X 6-1/2" GALV U-BOLT	4	0.90 LBS	
4	GB-05205	5/8" X 2" GALV BOLT KIT	8	0.26 LBS	
5	GW-05	5/8" GALV FLAT WASHER, 1.7OD	8	0.06 LBS	
6	MT-653-63	4.5" O.D. X 63" PIPE	1	57.02 LBS	

DENSITY		lbs/in <sup>3</sup>
MASS	88.78	lbs
VOLUME	314.66	in <sup>3</sup>
SURFACE AREA	2524.22	in <sup>2</sup>
HEIGHT	63.0"	
LENGTH	16.2"	
WIDTH	7.0"	

<b>COMMScope, INC. OF NORTH CAROLINA</b>										
TOLERANCES					SAP MATERIAL MASTER					
1 PLACE .X[X] ± .12[3.0]		3 PLACE .XXX[X] ± .030[0.8]			<b>PM-SL4-63</b>					
2 PLACE .XX[X] ± .06[1.5]		ANGLES ± 2°								
FINISH					MATERIAL					
UNLESS OTHERWISE SPECIFIED DIMENSIONS ARE IN INCHES INTERPRET PER ANSI Y 14.5M-1994	CE	YMENG	06AUG24	<b>SLIDER PIPE MOUNT KIT, 4 1/2" X 63"</b>						
	RW	YMENG	08/12/2024							
	AD	YC1015	08/12/2024							
	RE	YMENG	08/12/2024							
	ECN	40201892CMO								
SCALE <b>1:1</b>		DOCUMENT NO. <b>PM-SL4-63</b>								
SIZE	Auth Group	INSL	MODEL			DRAWING				SHEET 1 OF 1
<b>C</b>			VERSION	STATUS	REVISION	VERSION	STATUS	REVISION		
			01	RE	C	00	RE	C		