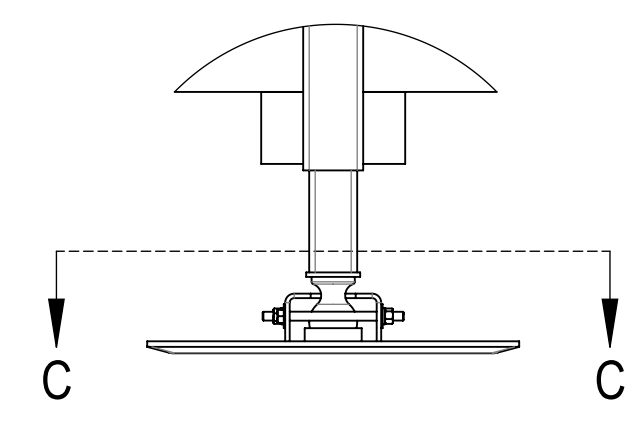
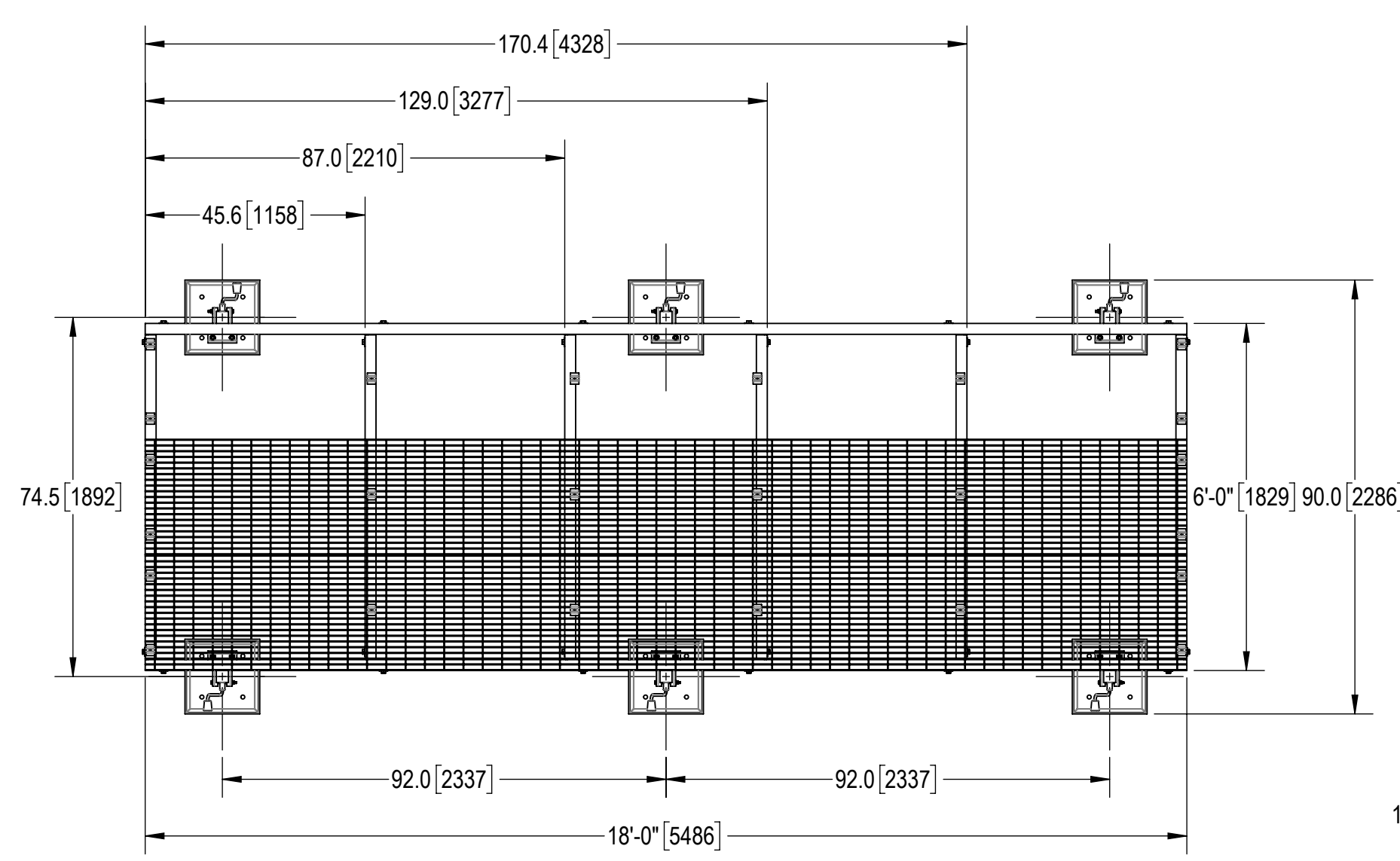
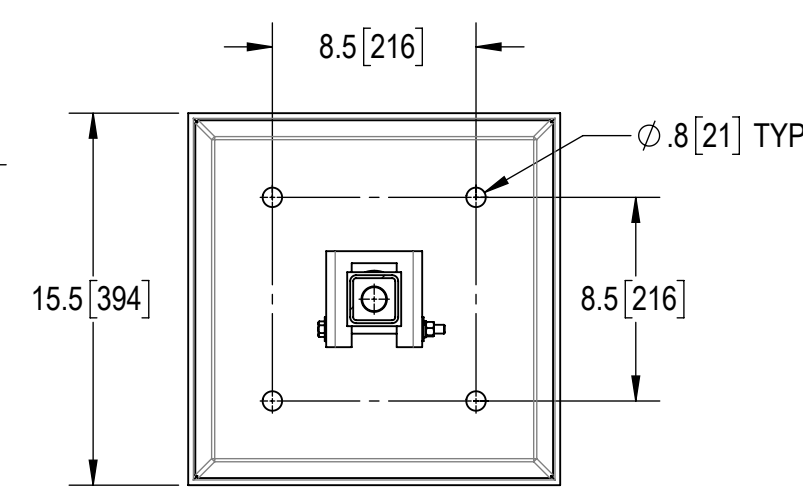


- 1.0 GENERAL NOTES  
 1.1 ALL METRIC DIMENSIONS ARE IN BRACKETS [X.X]  
 1.2 FOR PATENT INFO: <https://www.cs-pat.com>  
 2.0 DESIGN NOTES  
 3.0 MANUFACTURING/SPECIAL REQUIREMENTS  
 3.1 TIGHTEN ALL BOLTS SECURING FLAT PLATES BY THE TURN-OF-NUT METHOD. TIGHTEN ALL U-BOLTS USING TURN-OF-NUT METHOD WITH ATTENTION TO LEAVE EQUAL DISTANCE AND EQUAL FORCE ON EACH LEG OF THE U-BOLT.  
 4.0 TEST  
 5.0 PACKAGING  
 5.1 PACKAGING SHALL MEET COMMSCOPE REQUIREMENTS PER DOCUMENT IS-PL-3005  
 5.2 PRINTED DOCUMENT TO BE PLACED INSIDE POLYBAG AND THEN IN SHIPPING CONTAINER  
 5.3 EXTRA HARDWARE MAY BE SUPPLIED, BAGGED AND SHIPPED

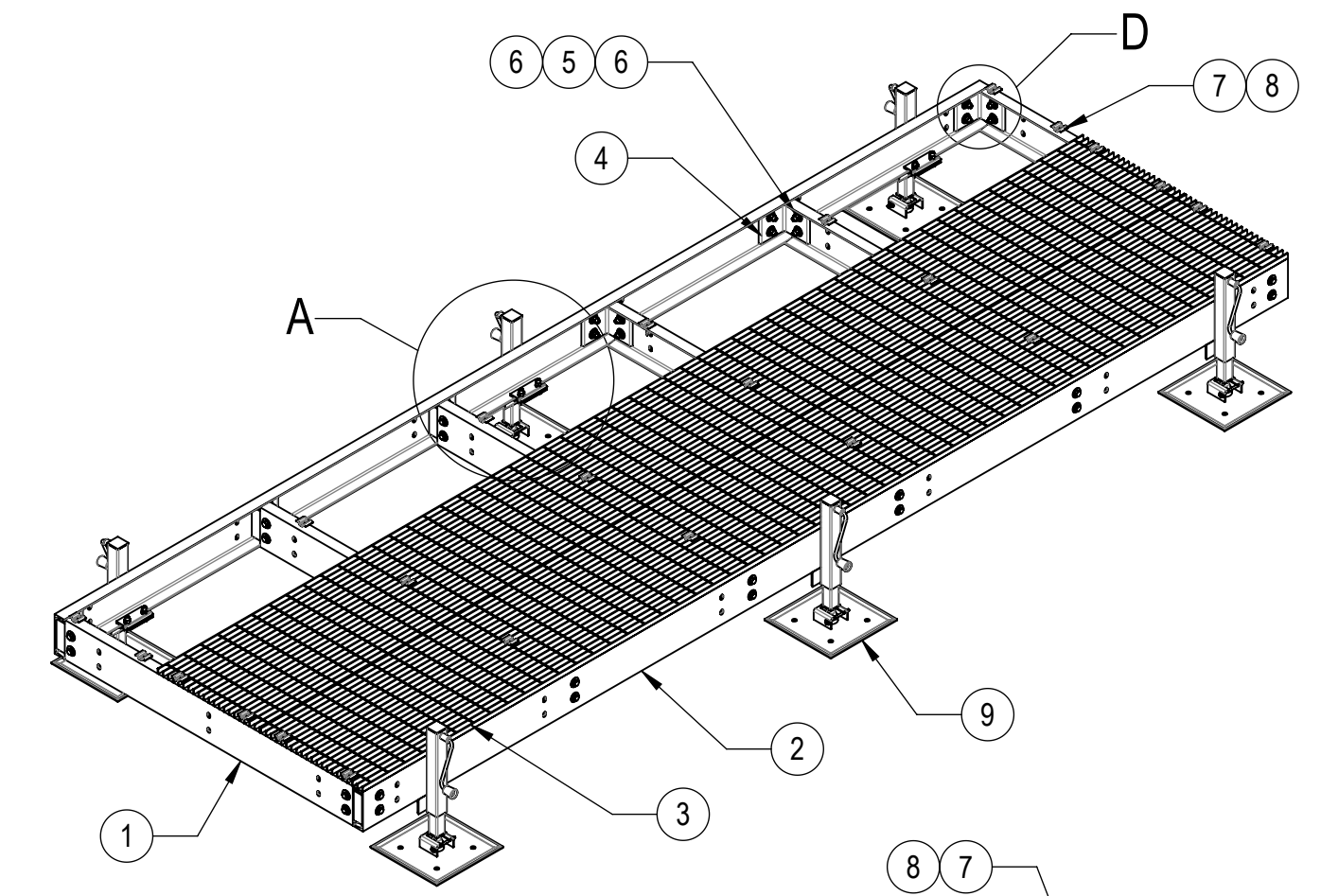
REVISIONS			
REV.	DESCRIPTION	DATE	APPROVED
A	INITIAL RELEASE	DRR 04APR12	TP
B	UPDATED DRAWING FORMAT	LL1090 23AUG24	YC1015 40203043CMO



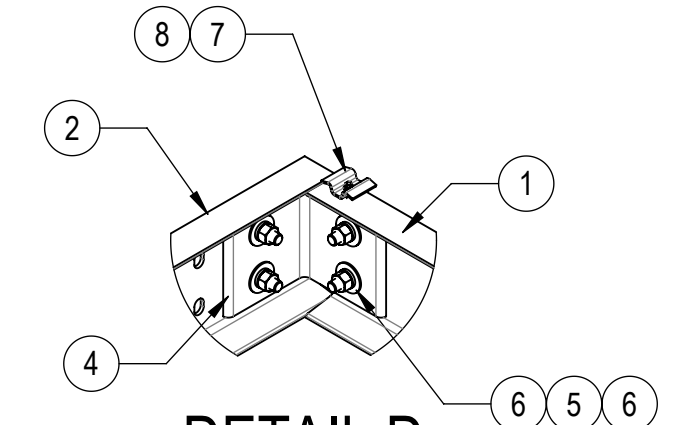
DETAIL B  
SCALE 1 : 8



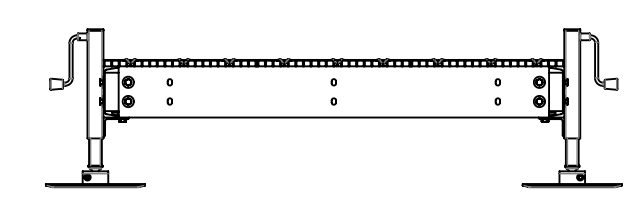
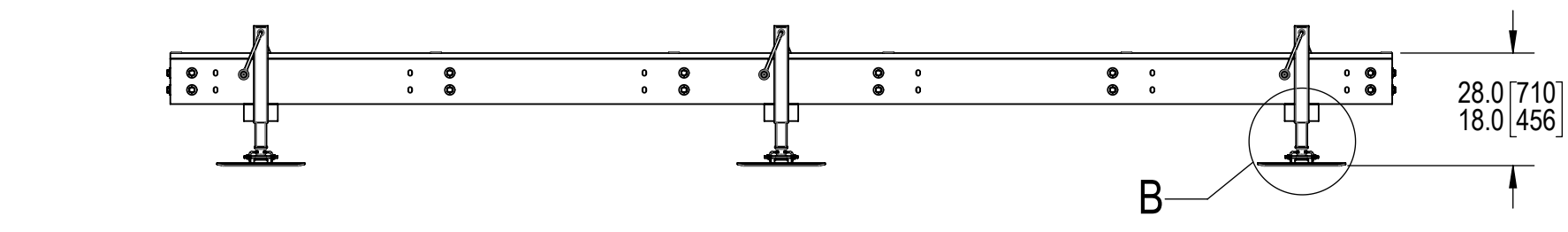
SECTION C-C  
SCALE 1 : 8



DETAIL A  
SCALE 1 : 10



DETAIL D  
SCALE 1 : 10



COMPONENT PART NUMBERS PROVIDED FOR ASSEMBLY PURPOSES;  
 INDIVIDUAL COMPONENTS MAY BE SHIPPED AS PARTS WITHIN AN INCLUDED KIT.

ITEM	PART NO.	DESCRIPTION	QTY.	WEIGHT	NOTE NO.
1	MTC8822061001	6' CENTER CHANNEL	6	63.61 LBS	
2	MTC7902101801	18' SIDE CHANNEL	2	204.61 LBS	
3	MTC7902101802	24" X 18' BAR GRATING	3	244.42 LBS	
4	MTC790203	CHANNEL ADAPTER ANGLE	12	7.07 LBS	
5	GB-05205	5/8" X 2" GALV BOLT KIT	48	0.26 LBS	
6	GWF-05	5/8" GALV FLAT WASHER, 1.7OD	96	0.06 LBS	
7	MTC390324	BAR GRATING CLIP	24	0.17 LBS	
8	TS1220	12-24 X 2" SELF DRILLING SCREW	24	0.03 LBS	
9	EQ-P-AL	ADJ. LEG FOR EQUIPMENT PLATFORMS	6	56 LBS	

DENSITY	1972.80	lbs/in <sup>3</sup>
MASS	6717.09	lbs
VOLUME	64993.56	in <sup>3</sup>
SURFACE AREA	64993.56	in <sup>2</sup>
HEIGHT	18.0"	
LENGTH	216.0"	
WIDTH	90.0"	

© 2024 CommScope, Inc. Confidential

**COMMSCOPE, INC. OF NORTH CAROLINA**

TOLERANCES		SAP MATERIAL MASTER			
1 PLACE .X[X] ± 0.12[3.0]	3 PLACE .XXX[X] ± 0.031[0.8]	EQ-P0618-AL			
2 PLACE .XX[X] ± 0.06[1.5]	ANGLES ± 2°				
FINISH		MATERIAL			
UNLESS OTHERWISE SPECIFIED DIMENSIONS ARE IN INCHES INTERPRET PER ANSI Y 14.5M-1994		TITLE			
CE DRR	04APR12	6' X 18' EQUIPMENT PLATFORM (6) EQ-P-AL			
RW LL1090	08/23/2024				
AD YC1015	08/25/2024				
RE YMENG	08/26/2024				
ECN 40203043CMO	SCALE 1:24	DOCUMENT NO. EQ-P0618-AL			
SIZE Auth Group INSL	MODEL		DRAWING		
C	00	RE	B	00	
VERSION	STATUS	REVISION	VERSION	STATUS	
00	RE	B	00	RE	
				REVISION	SHEET
				B	1 OF 1