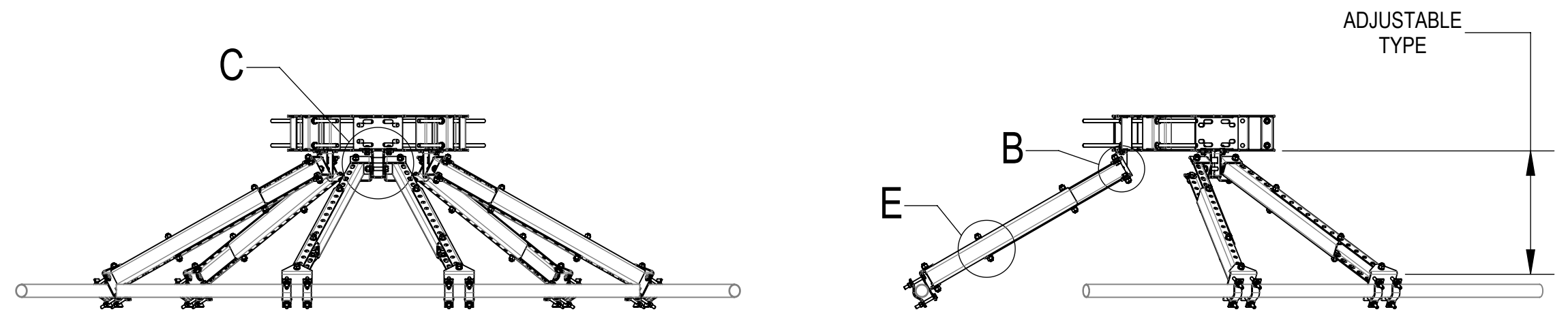
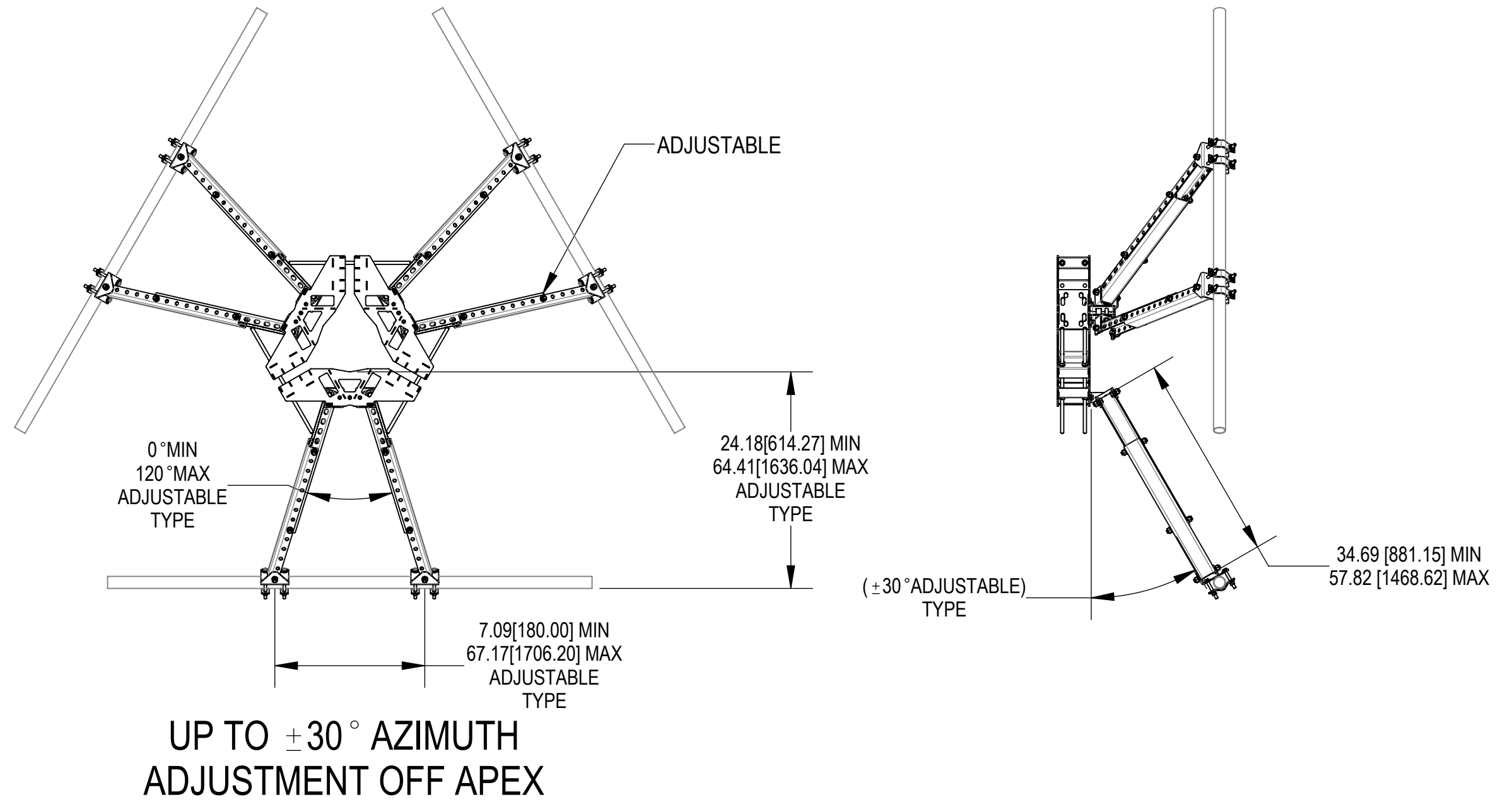
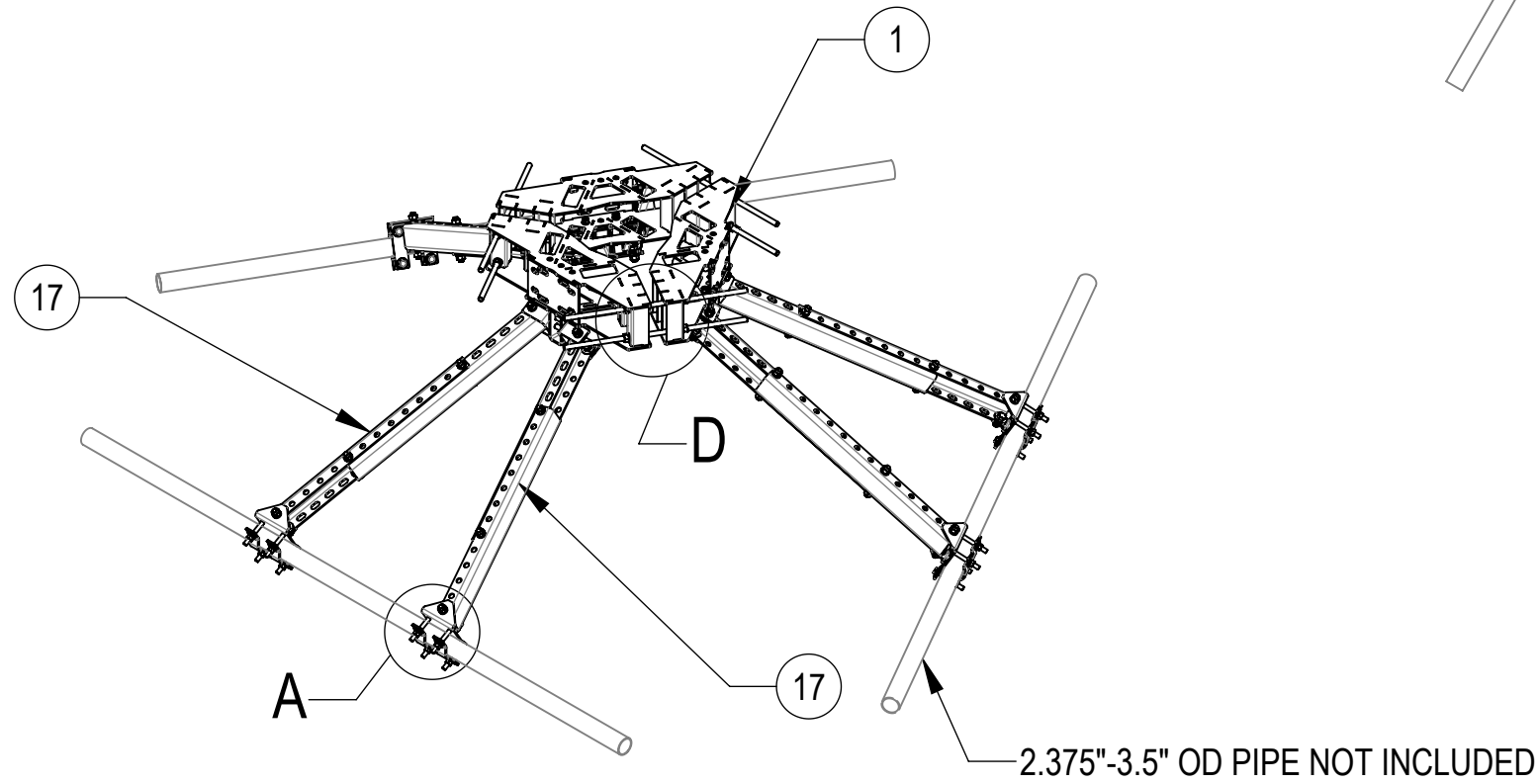


- 1.0 GENERAL NOTES
 1.1 ALL METRIC DIMENSIONS ARE IN BRACKETS [X.X]
 1.2 FOR PATENT INFO: <https://www.cs-pat.com>
 2.0 DESIGN NOTES
 2.1 FITMENT RANGE FOR RING MOUNT 15" TO 50"
 2.2 ALL DIMENSIONS SHOWN ARE REFERENCE ONLY ALL CONNECTIONS ARE ADJUSTABLE. FINAL INSTALLED APPLICATION DICTATES FINISHED DIMENSIONS.
 3.0 MANUFACTURING/SPECIAL REQUIREMENTS
 3.1 TIGHTEN ALL BOLTS SECURING FLAT PLATES BY THE TURN-OF-NUT METHOD. TIGHTEN ALL U-BOLTS USING TURN-OF-NUT METHOD WITH ATTENTION TO LEAVE EQUAL DISTANCE AND EQUAL FORCE ON EACH LEG OF THE U-BOLT.
 4.0 TEST
 5.0 PACKAGING
 5.1 PACKAGING SHALL MEET COMMSCOPE REQUIREMENTS PER DOCUMENT IS-PL-3005
 5.2 PRINTED DOCUMENT TO BE PLACED INSIDE POLYBAG AND THEN IN SHIPPING CONTAINER
 5.3 EXTRA HARDWARE MAY BE SUPPLIED, BAGGED AND SHIPPED

REVISIONS			
REV.	DESCRIPTION	DATE	APPROVED
A	NEW RELEASED.	XZ1054 10/18/2021	15185PC
B	ADDED GN-04 AND GWL-04	RY1002 13AUG24	BCROSS 40202158CMO



COMPONENT PART NUMBERS PROVIDED FOR ASSEMBLY PURPOSES;
 INDIVIDUAL COMPONENTS MAY BE SHIPPED AS PARTS WITHIN AN INCLUDED KIT.

ITEM	PART NO.	DESCRIPTION	QTY.	WEIGHT	NOTE NO.
1	MTC328602	WELDMENT, LIGHT DUTY 10-50 RINGMOUNT	3	26.39 LBS	
2	MT-382-24	5/8" X 24" GALV THREADED ROD	6	2.07 LBS	
3	GB-04125	1/2" X 1-1/4" GALV BOLT KIT	6	0.12 LBS	
4	GB-05145	5/8" X 1-1/2" GALV BOLT KIT	48	0.22 LBS	
5	VSRC-2000	BRACKET, PIVOT	6	1.64 LBS	
6	GWF-05	5/8" GALV FLAT WASHER, 1.7OD	48	0.06 LBS	
7	VSRC-1000	BRACKET, PIVOT ATTACHMENT WELD ASSY	3	2.06 LBS	
8	VSRC-3000	CHANNEL MOUNT FOR VSRC	6	2.14 LBS	
9	ACP10	1.5" - 3.5" O.D. CLAMP HALF	12	0.61 LBS	
10	1204FTB	1/2" X 4" FULL THREAD GALV. BOLT	24	0.26 LBS	
11	GWF-04	1/2" GALV FLAT WASHER	48	0.04 LBS	
12	GWL-05	5/8" GALV LOCK WASHER	12	0.03 LBS	
13	GN-05	5/8" GALV HEX NUT	12	0.08 LBS	
14	GB-05365	5/8" X 3-3/4" GALV BOLT KIT	3	0.41 LBS	
15	GWL-04	1/2" GALV LOCK WASHER	24	0.01 LBS	
16	GN-04	1/2" GALV HEX NUT	24	0.04 LBS	
17	MCPM-2100	ARM, 31.5" SUPPORT	12	10.72 LBS	

	DENSITY	MASS	VOLUME	SURFACE AREA	HEIGHT	LENGTH	WIDTH
		414.82	1464.07	21706.54			
		lbs/in ³	lbs	in ³			

COMMSCOPE, INC. OF NORTH CAROLINA

TOLERANCES
 1 PLACE .X[X] ± 0.25[6.4] 3 PLACE .XXX[X] ± 0.060[1.5]
 2 PLACE .XX[X] ± 0.12[3.0] ANGLES ± 2°

SAP MATERIAL MASTER
VSRC-MM-1550

FINISH: _____ MATERIAL: _____

NAME	DATE	TITLE
CE XZ1054	10/18/2021	VERTICAL STABILIZER CHANNEL MP 15 TO 50
RW RY1002	08/14/2024	
AD BCROSS	08/21/2024	
RE RY1002	09/05/2024	

SCALE: **1:24** DOCUMENT NO.: **VSRC-MM-1550**

ECN 40202158CMO

SIZE	Auth Group	INSL	MODEL	DRAWING			SHEET		
C			VERSION	STATUS	REVISION	VERSION	STATUS	REVISION	1 OF 4
			01	RE	B	01	RE	B	

4

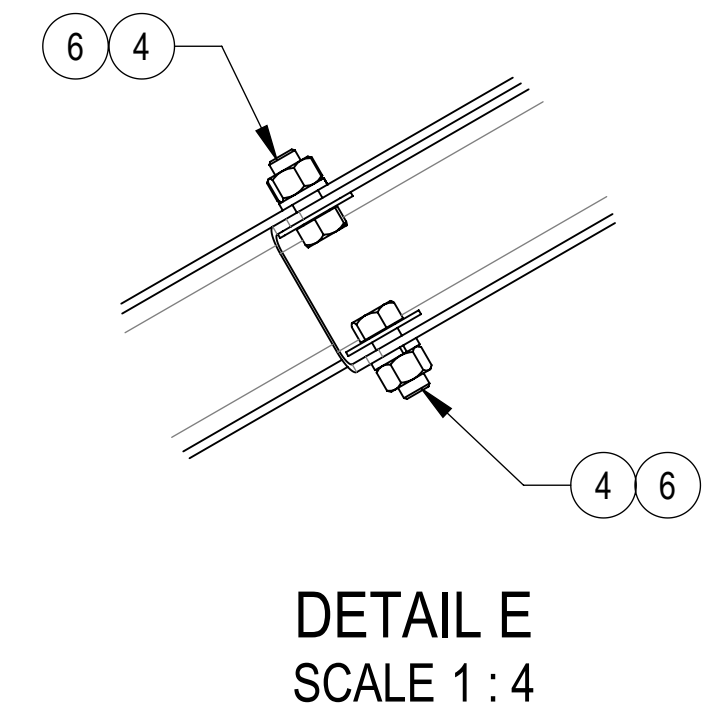
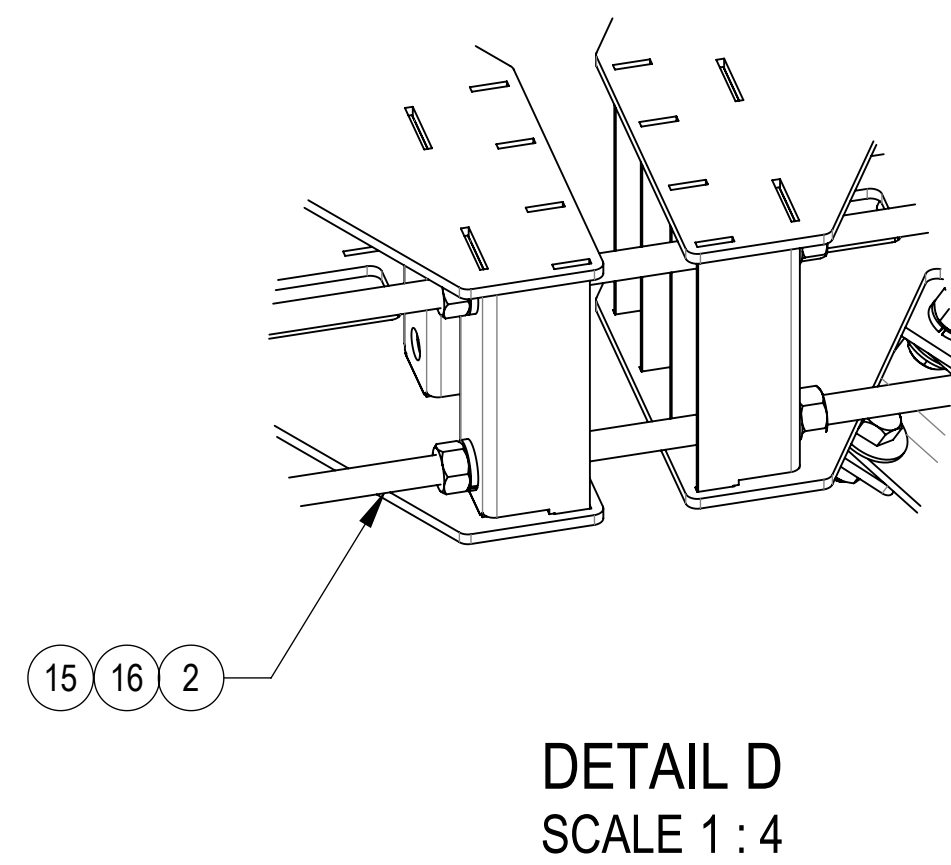
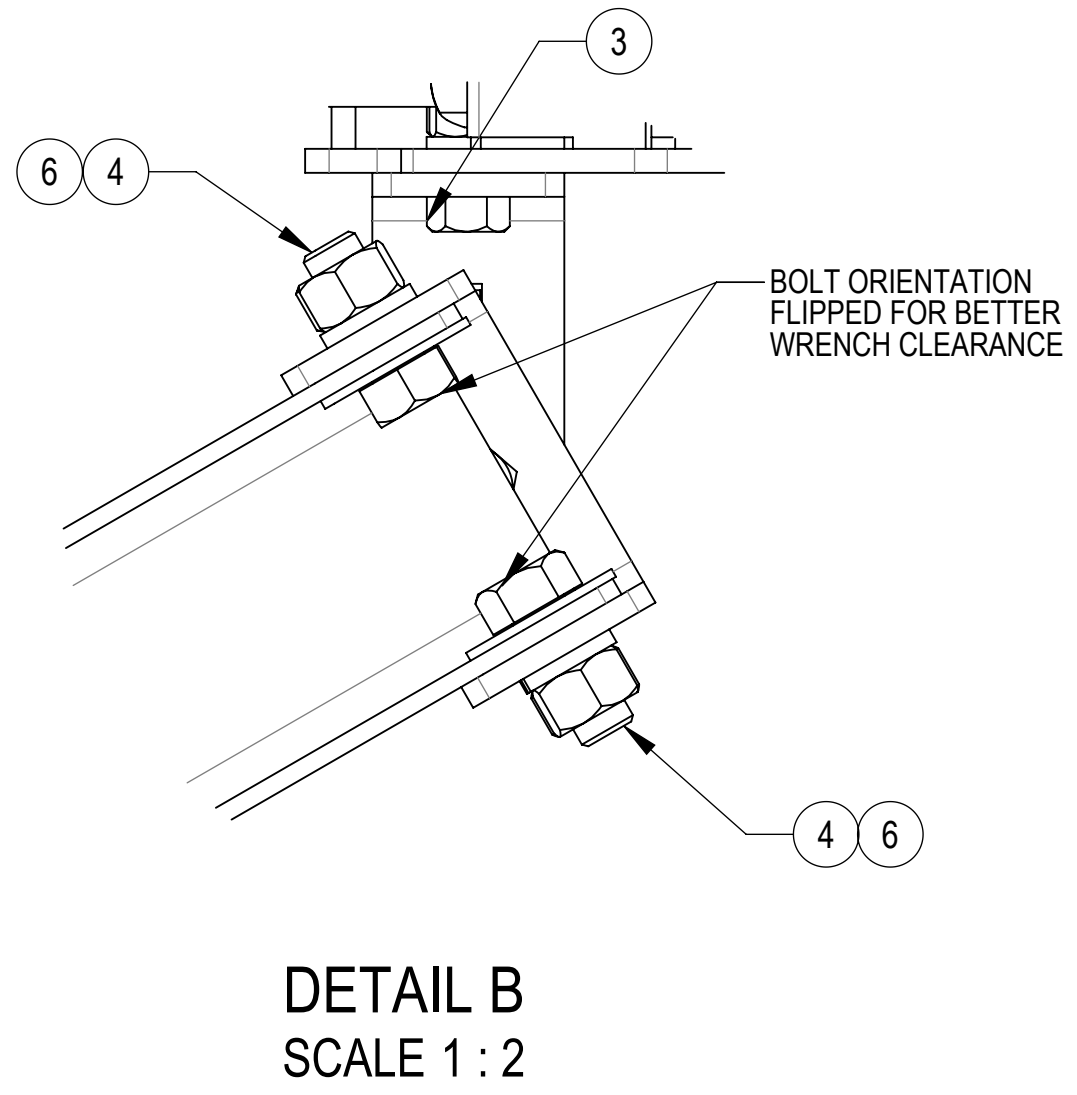
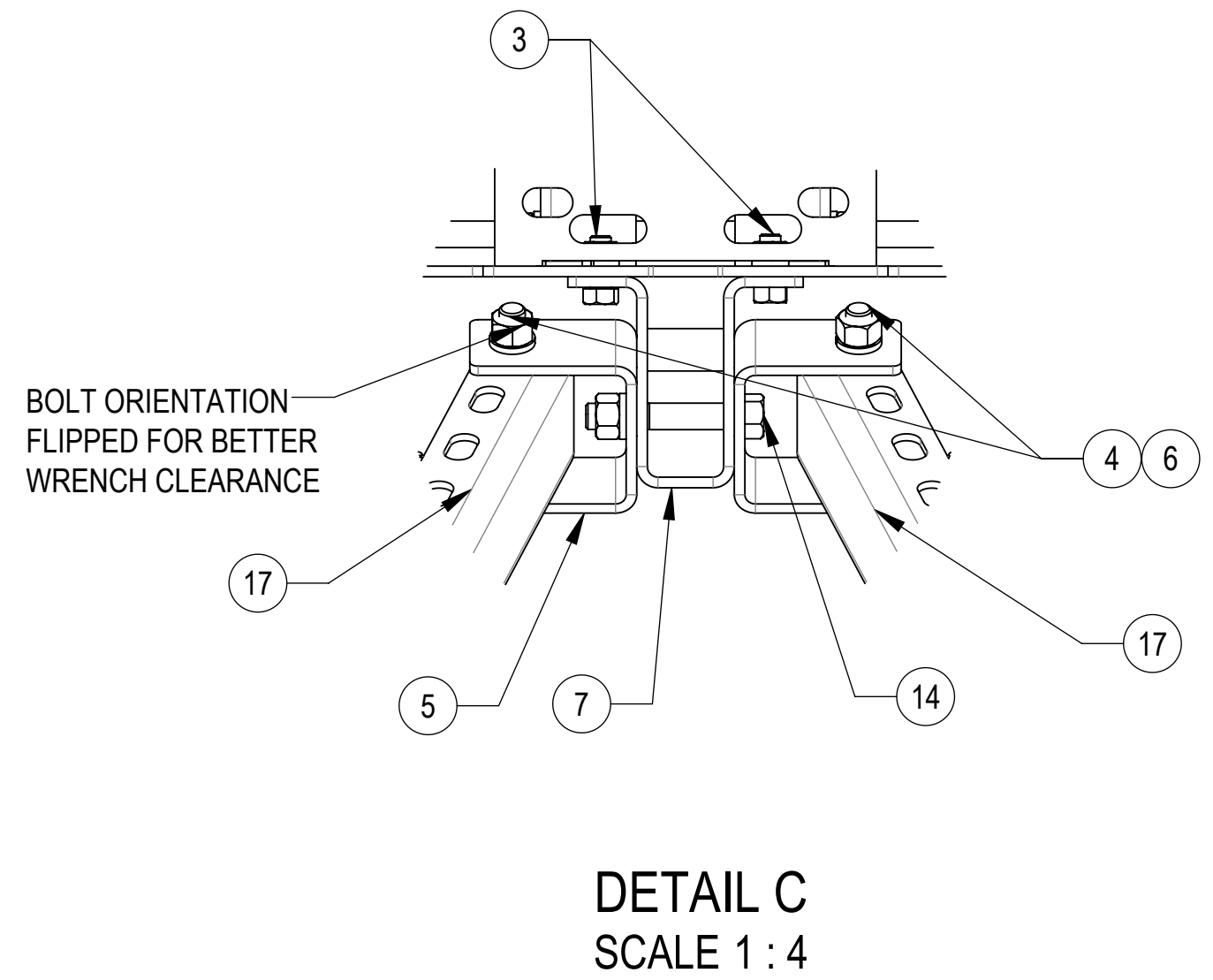
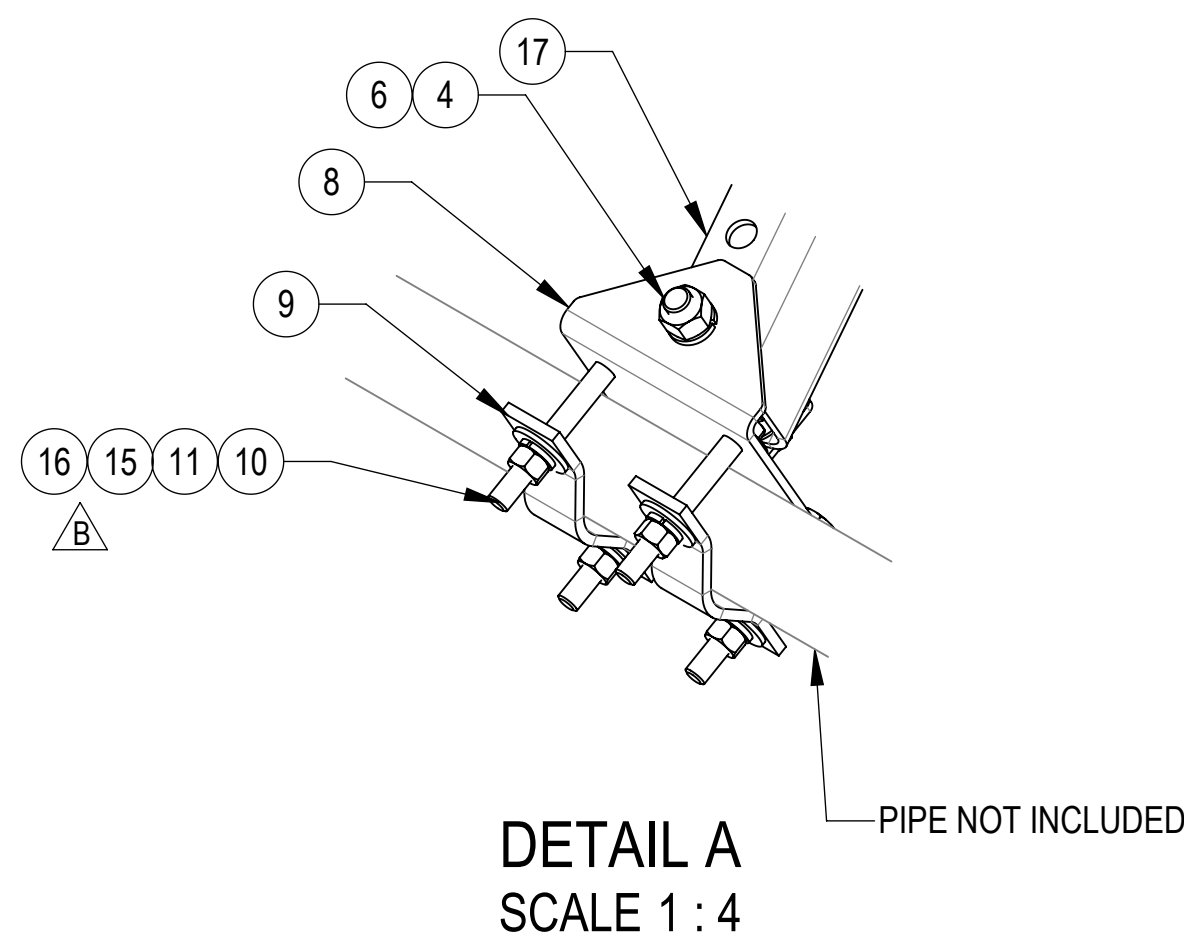
3

2

1

D

D



B

B

A

A

COMMSCOPE, INC. OF NORTH CAROLINA				
TITLE VERTICAL STABILIZER CHANNEL MP 15 TO 50				
SIZE C	SCALE 1:24	DOCUMENT NO. VSRC-MM-1550		
		DRAWING		SHEET
		VERSION	STATUS	REVISION
		01	RE	B
				SHEET 2 OF 4

© 2024 CommScope, Inc. Confidential

4

3

2

1

4

3

2

1

D

D

C

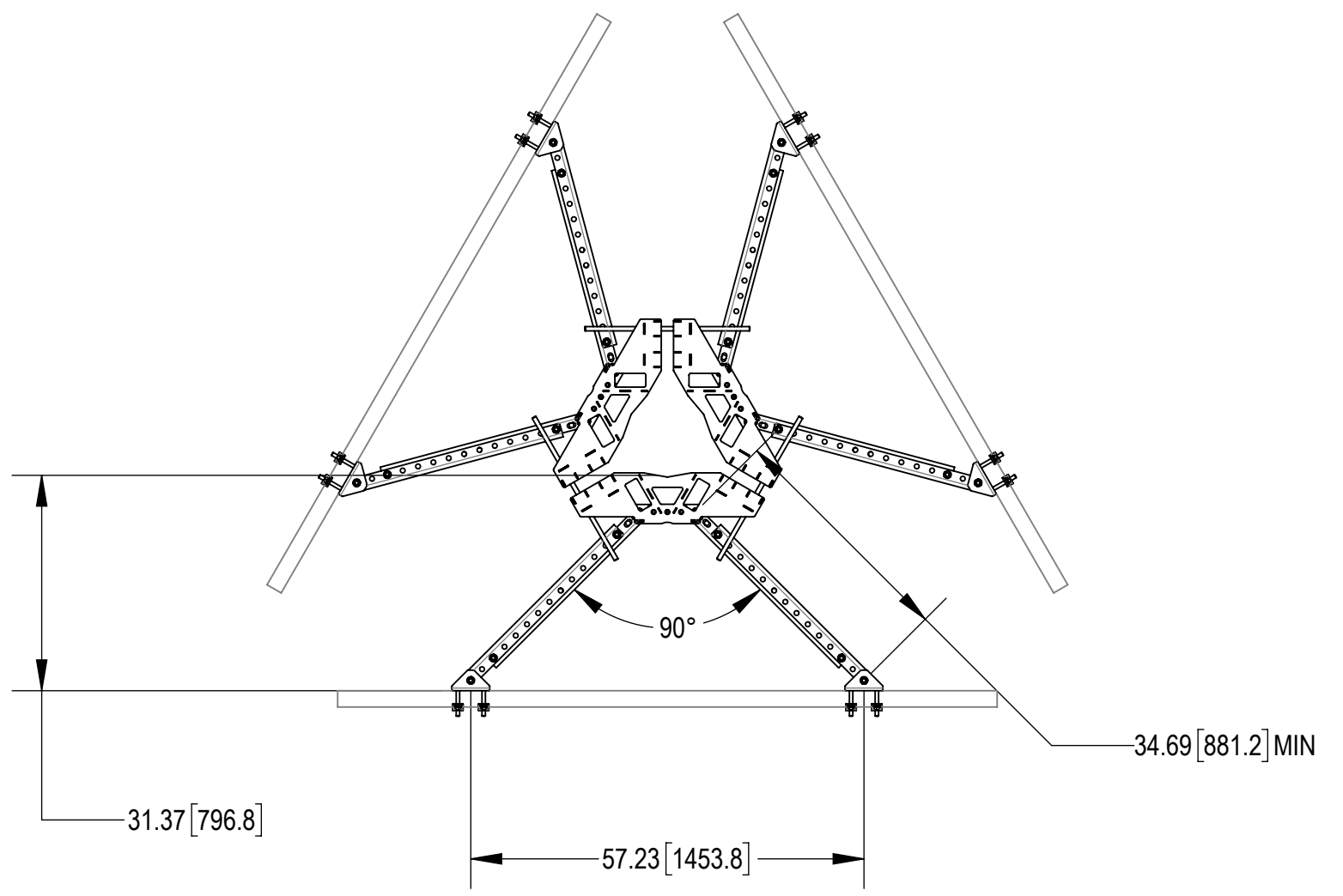
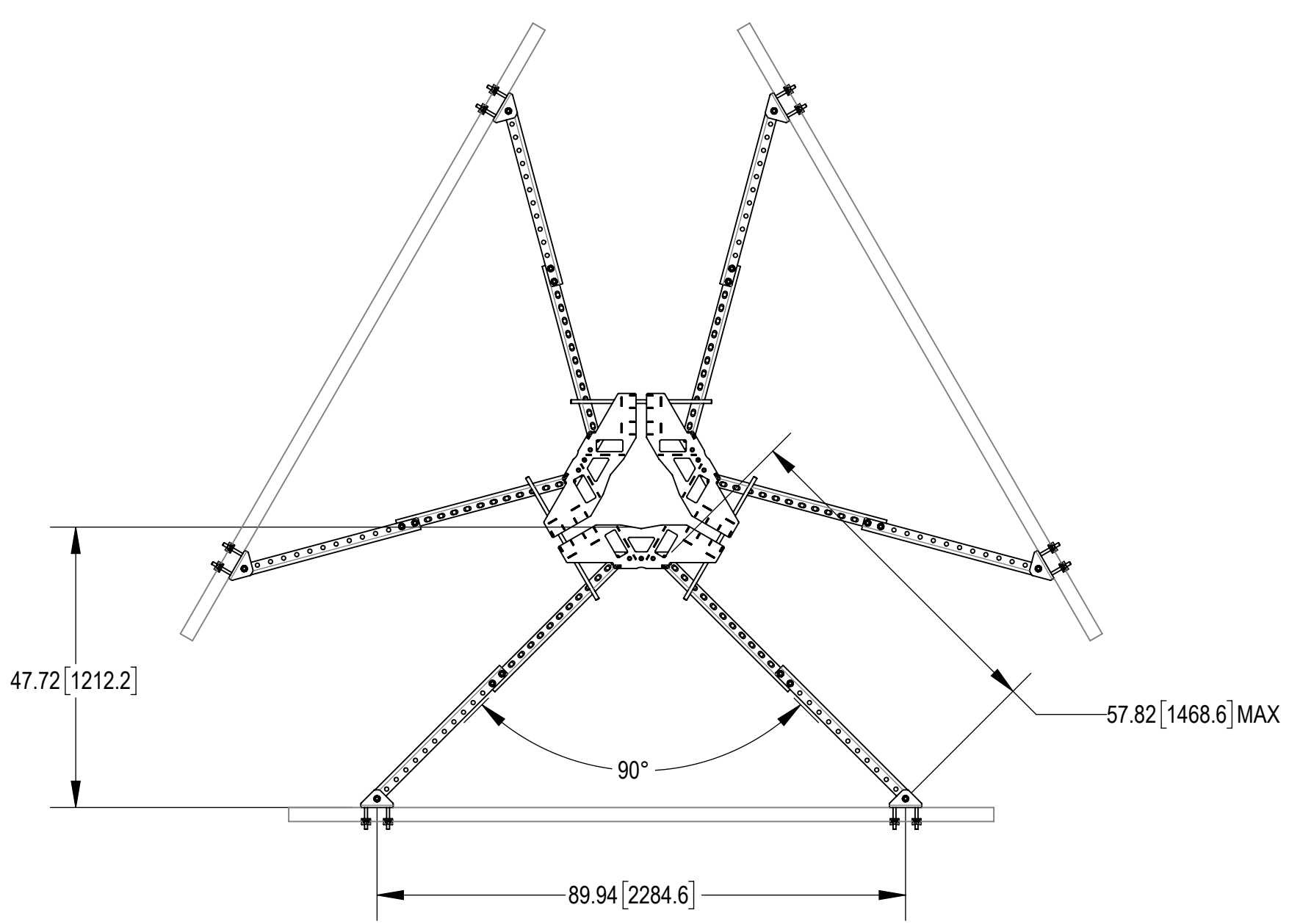
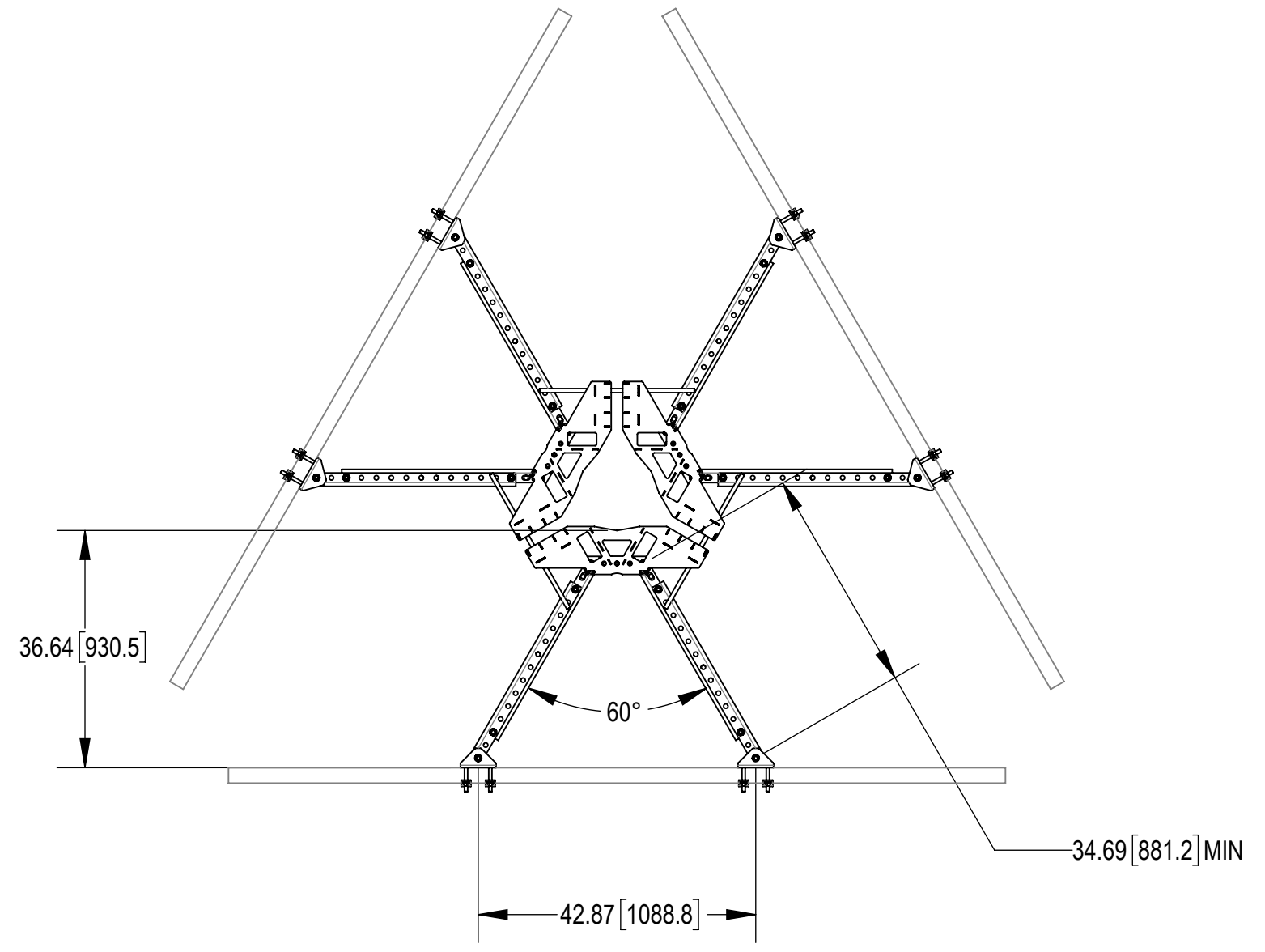
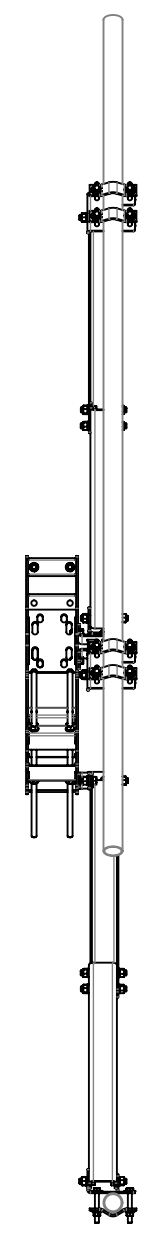
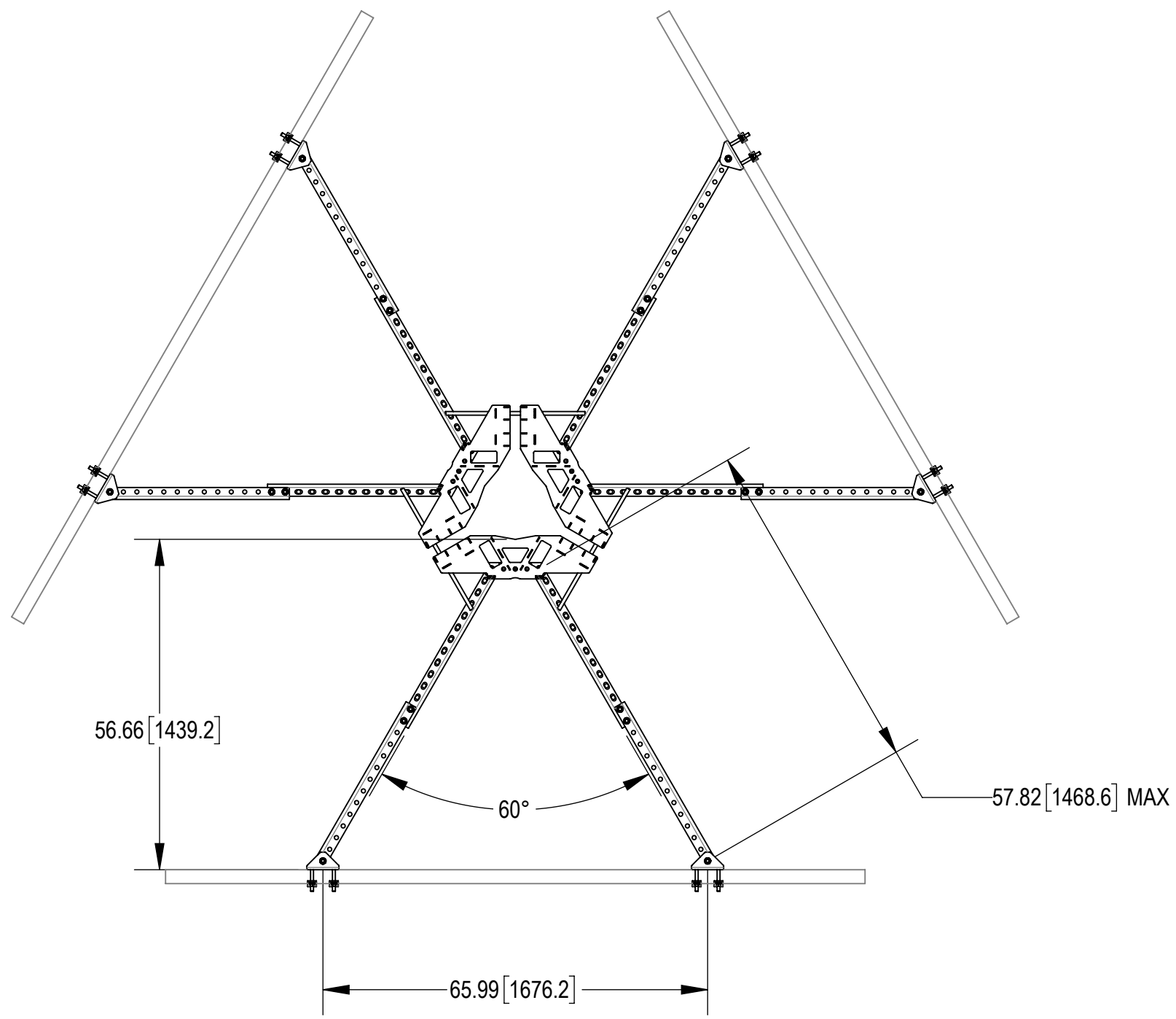
C

B

B

A

A



COMMSCOPE, INC. OF NORTH CAROLINA				
TITLE VERTICAL STABILIZER CHANNEL MP 15 TO 50				
SIZE C	SCALE 1:24	DOCUMENT NO. VSRC-MM-1550		
		DRAWING		SHEET
		VERSION	STATUS	REVISION
		01	RE	B
				SHEET 3 OF 4

© 2024 CommScope, Inc. Confidential

4

3

2

1

4

3

2

1

D

D

C

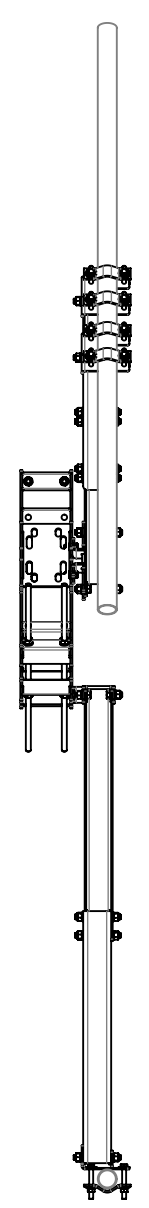
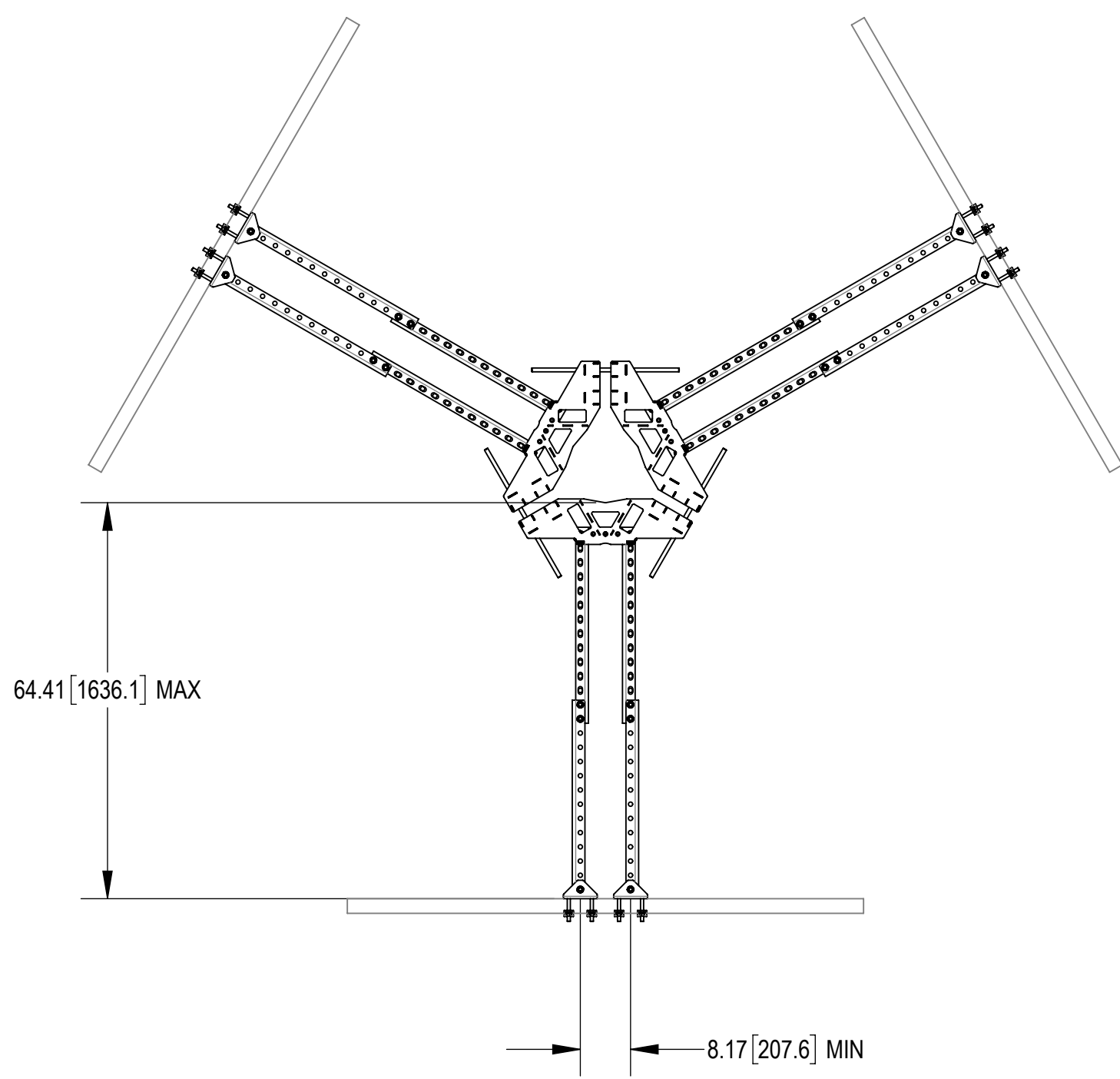
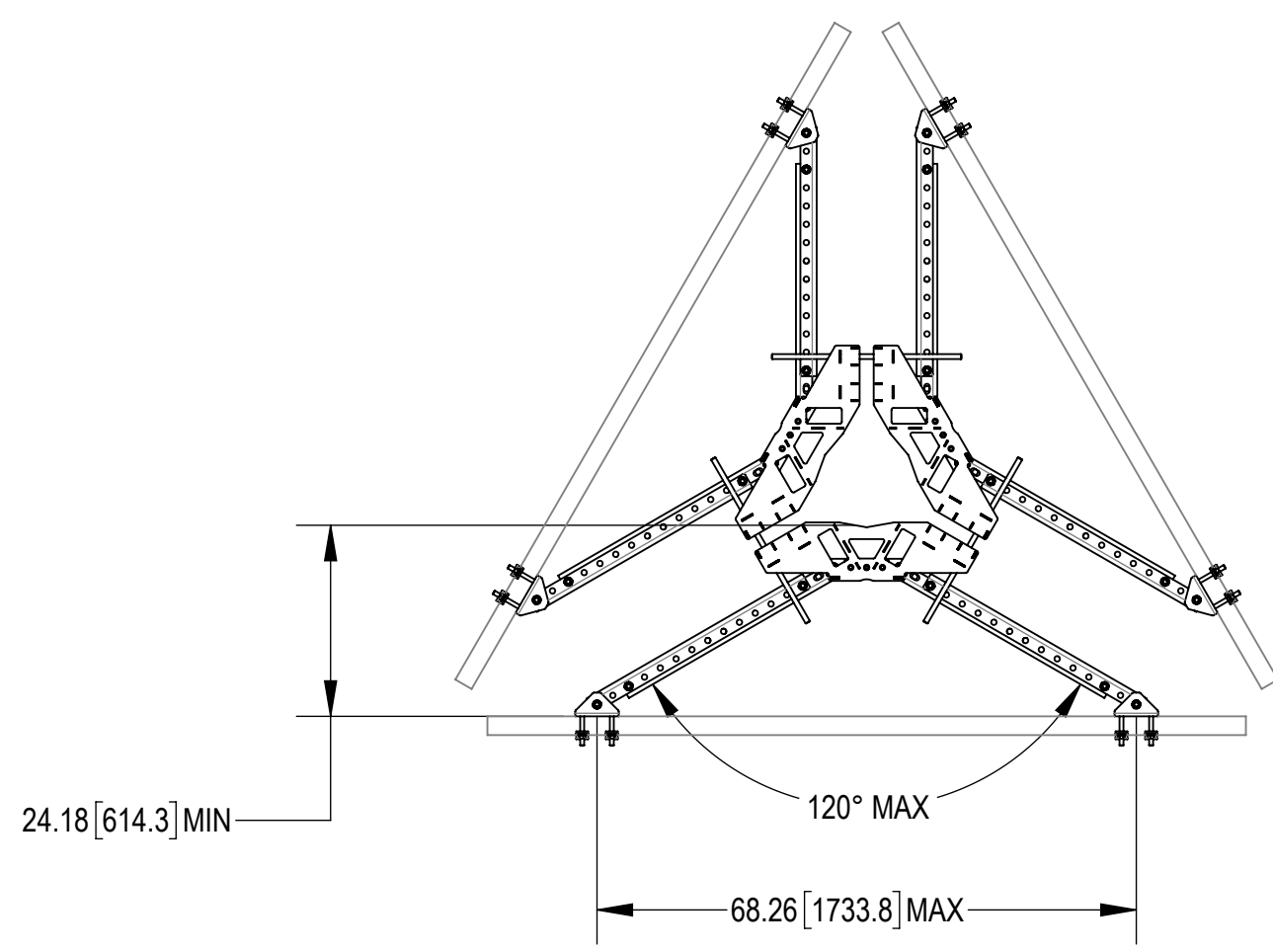
C

B

B

A

A



COMMSCOPE, INC. OF NORTH CAROLINA				
TITLE VERTICAL STABILIZER CHANNEL MP 15 TO 50				
SIZE C	SCALE 1:24	DOCUMENT NO. VSRC-MM-1550		
		DRAWING		SHEET
		VERSION	STATUS	REVISION
		01	RE	B
				4 OF 4

© 2024 CommScope, Inc. Confidential

4

3

2

1

