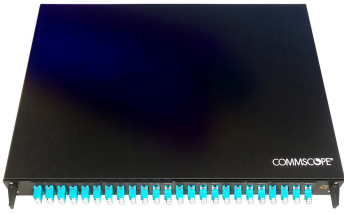


2-2122146-4 | FMS-K-2-B-I-L5F-24-IN99-48-SP



FMS Fiber Optic Termination/Splice Panel, 1U, 19 in, 48 LC/UPC, multimode, OM3, black

Product Classification

Regional Availability	India
Portfolio	CommScope®
Product Type	Fiber patch/splice panel
Product Series	FMS

General Specifications

Functionality	Patching Splicing
Body Style	Symmetrical
Cable Exit Location	Rear, left side Rear, right side
Color	Black
Growth Configuration	Fully loaded
Interface, front	LC/UPC
Rack Type	EIA 19 in
Rack Units	1
Shelf Movement	Sliding
Splice Trays Included, quantity	2
Splicing Type	Heat shrink, single fiber fusion
Total Ports, quantity	48

Dimensions

Height	44.45 mm 1.75 in
Width	482.6 mm 19 in
Depth	320 mm 12.598 in

Material Specifications

Finish	Powder coated
Material Type	Steel

Optical Specifications

Fiber Mode	Multimode
Fiber Type	OM3
Insertion Loss, maximum	0.3 dB
Return Loss, minimum	20 dB

Packaging and Weights

Included	Mounting hardware
Packaging quantity	1

Regulatory Compliance/Certifications

Agency	Classification
CHINA-ROHS	Below maximum concentration value
REACH-SVHC	Compliant as per SVHC revision on www.commscope.com/ProductCompliance
ROHS	Compliant
UK-ROHS	Compliant

