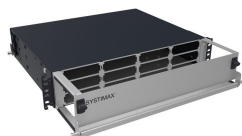


760190777 | 360G2-2U-MOD-UHD-FX

SYSTIMAX 360G2-2U UHD Fixed Panel, accepts 12 InstaPATCH® Modules or MPO Distribution Panels



OBSOLETE

This product was discontinued on: December 31, 2017

Replaced By:

760218461
UD-2U-FX

Ultra High Density 2U modular cassette fixed Panel, accepts (12) G2 modules or MPO panels, providing up to 144 duplex LC ports, or up to 96 MPO ports

Product Classification

Regional Availability	Asia Australia/New Zealand EMEA Latin America North America
Portfolio	CommScope®
Product Type	Fiber patch panel
Product Brand	InstaPATCH® 360

General Specifications

Application	Accepts twelve InstaPATCH® 360 data modules or 360DP panels
Rack Units	2
Shelf Movement	Fixed

Dimensions

Height	88.9 mm 3.5 in
Width	482.6 mm 19 in
Depth	469.9 mm 18.5 in

Packaging and Weights

Weight, net	4.536 kg 10 lb
--------------------	------------------

Regulatory Compliance/Certifications

Agency**Classification**

CHINA-ROHS

Below maximum concentration value

ISO 9001:2015

Designed, manufactured and/or distributed under this quality management system

REACH-SVHC

Compliant as per SVHC revision on www.commscope.com/ProductCompliance

ROHS

Compliant

