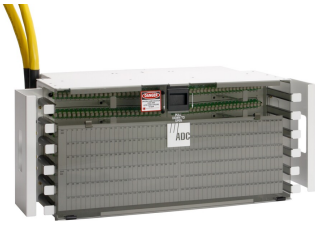


# SBF3CM-87K300F-A



FDF Fiber Termination Panel, 72 SC/UPC, singlemode, 8 in x 23 in, putty white, pre-terminated with IFC cable, 300 feet, Stub tail at far end

## Product Classification

<b>Regional Availability</b>	Latin America   North America
<b>Portfolio</b>	CommScope®
<b>Product Type</b>	Fiber patch panel, with IFC cable
<b>Product Series</b>	FDF

## General Specifications

<b>Functionality</b>	Patching
<b>Application</b>	Used in rear-load FDF-style frames only
<b>Body Style</b>	Symmetrical
<b>Cable Exit Location</b>	Upward
<b>Cable Stub Type</b>	IFC
<b>Color</b>	Putty white
<b>Color, front</b>	Putty white
<b>Growth Configuration</b>	Fully loaded
<b>Interface, front</b>	SC/UPC
<b>Interface, rear</b>	Stub tail
<b>Patch Cord Entry Location</b>	Front, left side   Front, right side
<b>Rack Type</b>	EIA 23 in
<b>Rack Units</b>	4.6
<b>Shelf Movement</b>	Fixed
<b>Total Ports, quantity</b>	72

## Dimensions

<b>Height</b>	203.2 mm   8 in
<b>Width</b>	584.2 mm   23 in
<b>Cable Length</b>	91 m   298.556 ft

# SBFCM-87K300F-A

---

## Material Specifications

<b>Finish</b>	Powder coated
<b>Material Type</b>	Steel

## Optical Specifications

<b>Fiber Mode</b>	Singlemode
-------------------	------------

## Environmental Specifications

<b>Operating Temperature</b>	-40 °C to +70 °C (-40 °F to +158 °F)
------------------------------	--------------------------------------

## Packaging and Weights

<b>Packaging quantity</b>	1
---------------------------	---

## Regulatory Compliance/Certifications

<b>Agency</b>	<b>Classification</b>
CHINA-ROHS	Below maximum concentration value
REACH-SVHC	Compliant as per SVHC revision on <a href="http://www.commscope.com/ProductCompliance">www.commscope.com/ProductCompliance</a>
ROHS	Compliant
UK-ROHS	Compliant

