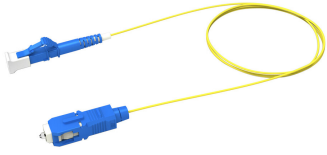


AFGLFSFL1

Base Product



Fiber Patch Cord, Singlemode G.657.A2, Grade B, LC/UPC to SC/UPC, Simplex, 1.6 mm LSZH jacket

Product Classification

Regional Availability	Asia Australia/New Zealand Europe Latin America Middle East /Africa North America
Portfolio	CommScope®
Product Type	Fiber patch cord, simplex
Product Series	AFG

General Specifications

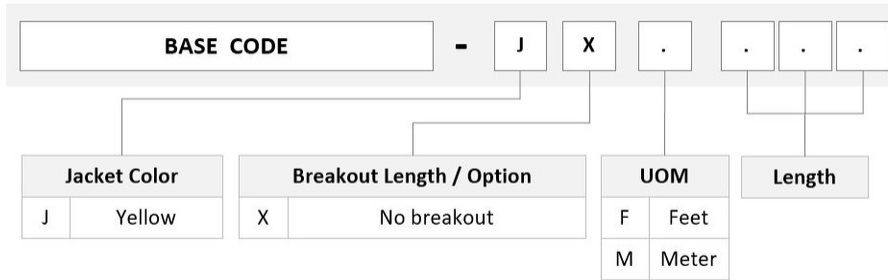
Connector A, quantity	1
Color, connector A	Blue
Connector B, quantity	1
Color, connector B	Blue
Interface, Connector A	LC/UPC
Interface, Connector B	SC/UPC
Total Fibers, quantity	1
Transmission Standards	IEC 61755

Dimensions

Cable Assembly Length Range (m)	1 – 999
Cable Assembly Length Range (ft)	1 – 999
Diameter Over Jacket	1.6 mm 0.063 in

Ordering Tree

AFGLFSFL1



Mechanical Specifications

Minimum Bend Radius, loaded	50 mm 1.969 in
Minimum Bend Radius, unloaded	30 mm 1.181 in
Tensile Load, long term, maximum	33 N 7.419 lbf
Tensile Load, short term, maximum	110 N 24.729 lbf
Cable Crush Resistance, maximum	3.5 N/mm 19.986 lb/in
Mating Durability, maximum	0.2 dB @ 500 cycles

Optical Specifications

Fiber Mode	Singlemode
Fiber Type	G.657.A2, TeraSPEED®
Performance Grade	IEC Random Mating Grade B
Insertion Loss, maximum, connector A	0.25 dB
Insertion Loss, maximum, connector B	0.25 dB
Return Loss, minimum, connector A	50 dB
Return Loss, minimum, connector B	50 dB

Environmental Specifications

Operating Temperature	-20 °C to +60 °C (-4 °F to +140 °F)
Environmental Space	Dual Rated LSZH/Riser

Packaging and Weights

Packaging quantity	1
---------------------------	---

Regulatory Compliance/Certifications

AFGLFSFL1

Agency

CHINA-ROHS

ISO 9001:2015

ROHS

UK-ROHS



Classification

Below maximum concentration value

Designed, manufactured and/or distributed under this quality management system

Compliant

Compliant/Exempted

Included Products

- 460159816 – Fiber indoor cable, Low Smoke Zero Halogen YL G.657 .A2, 1 fiber, Singlemode G.657.A2, 1.6 mm diameter, Feet jacket marking, Yellow jacket color
- 860637435 – LC/UPC Connector, Singlemode, Blue, Short Boot
- 860645407 – TeraSPEED® SC/UPC Connector Kit for 2.0 mm Fiber, Singlemode, Blue, Short Boot

* Footnotes

Performance Grade Guarantee to meet IEC 61755-1 Random Mating requirement

460159816

Fiber indoor cable, Low Smoke Zero Halogen YL G.657 .A2, 1 fiber, Singlemode G.657.A2, 1.6 mm diameter, Feet jacket marking, Yellow jacket color

Product Classification

Regional Availability	Asia Australia/New Zealand EMEA Latin America North America
Portfolio	CommScope®
Product Type	Fiber indoor cable
Product Series	L-MP

General Specifications

Cable Type	Cordage
Inner Jacket Color	Yellow
Jacket Color	Yellow
Jacket Marking	Feet
Total Fiber Count	1

Dimensions

Diameter Over Jacket	1.6 mm 0.063 in
-----------------------------	-------------------

Optical Specifications

Fiber Type	G.657.A2 G.657.A2, TeraSPEED®
-------------------	---------------------------------

Environmental Specifications

Installation temperature	-20 °C to +60 °C (-4 °F to +140 °F)
Operating Temperature	-20 °C to +70 °C (-4 °F to +158 °F)
Storage Temperature	-40 °C to +70 °C (-40 °F to +158 °F)
Environmental Space	Low Smoke Zero Halogen (LSZH)

Environmental Test Specifications

Heat Age	-20 °C to +85 °C (-4 °F to +185 °F)
Low High Bend	-20 °C to +70 °C (-4 °F to +158 °F)
Temperature Cycle	-20 °C to +70 °C (-4 °F to +158 °F)

Packaging and Weights

460159816

Cable weight 3.6 kg/km | 2.419 lb/kft

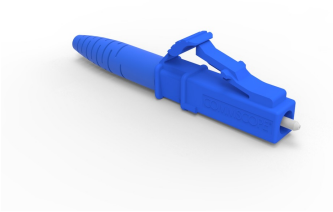
Regulatory Compliance/Certifications

Agency	Classification
CHINA-ROHS	Below maximum concentration value
REACH-SVHC	Compliant as per SVHC revision on www.commscope.com/ProductCompliance
ROHS	Compliant
UK-ROHS	Compliant



* Footnotes

Operating Temperature Specification applicable to non-terminated bulk fiber cable



LC/UPC Connector, Singlemode, Blue, Short Boot

Product Classification

Regional Availability	Asia Australia/New Zealand EMEA Latin America North America
Portfolio	CommScope®
Product Type	Fiber connector

General Specifications

Color, boot	Blue
Color, housing	Blue
Interface	LC/UPC

Dimensions

Length	41.6 mm 1.638 in
---------------	--------------------

Material Specifications

Ferrule Material	Zirconia
-------------------------	----------

Mechanical Specifications

Cable Retention Strength, maximum	11.24 lb @ 0 °
--	----------------

Optical Specifications

Fiber Mode	Singlemode
Insertion Loss Change, mating	0.2 dB
Optical Components Standard	ANSI/TIA-568. 3-D IEC 61753-1
Insertion Loss Change, temperature	0.3 dB
Insertion Loss, maximum	0.25 dB
Return Loss, minimum	55 dB

Regulatory Compliance/Certifications

860637435

Agency

CHINA-ROHS

ROHS

UK-ROHS

**Classification**

Below maximum concentration value

Compliant

Compliant

* Footnotes

Insertion Loss Change, mating

TIA-568: Maximum insertion loss change after 500 matings

Insertion Loss Change, temperature

Maximum insertion loss change from -10 °C to +60 °C (+14 °F to +140 °F)

TeraSPEED® SC/UPC Connector Kit for 2.0 mm Fiber, Singlemode, Blue, Short Boot

Product Classification

Regional Availability	Asia Australia/New Zealand EMEA Latin America North America
Portfolio	CommScope®
Product Type	Fiber connector
Product Brand	TeraSPEED®

General Specifications

Color	Blue
Interface	SC/UPC

Dimensions

Length	50.3 mm 1.98 in
Compatible Cable Diameter	2 mm 0.079 in

Material Specifications

Ferrule Material	Zirconia
-------------------------	----------

Mechanical Specifications

Cable Retention Strength, maximum	11.24 lb @ 0 °
--	----------------

Optical Specifications

Fiber Type	G.652.D and G.657.A1, TeraSPEED® OS2
Optical Components Standard	ANSI/TIA-568-C.3 GR-326-CORE
Insertion Loss, ULL, maximum	0.25 dB
Return Loss, minimum	50 dB

Packaging and Weights

Packaging quantity	1
---------------------------	---

Regulatory Compliance/Certifications

Agency	Classification
CHINA-ROHS	Below maximum concentration value

860645407

REACH-SVHC

Compliant as per SVHC revision on www.commscope.com/ProductCompliance

ROHS

Compliant

UK-ROHS

Compliant

