

CJNRB | IP06-06LUTP-1100L-1100E

Base Product



InstaPATCH® Cu GigaSPEED XL® U/UTP LSZH Preterminated Copper Cable, 1100 module to 360 1100 module, 6 links

This product will be discontinued on: January 31, 2025

Product Classification

| | |
|------------------------------|---|
| Regional Availability | Asia Australia/New Zealand EMEA Latin America North America |
| Portfolio | CommScope® |
| Product Type | Copper trunk cable assembly |
| Product Brand | GigaSPEED XL® InstaPATCH® Cu |

General Specifications

| | |
|---------------------------------------|------------------------|
| ANSI/TIA Category | 6 |
| Cable Type | U/UTP (unshielded) |
| Conductor Type | Solid |
| Interface, Connector A | 1100 module |
| Interface Feature, connector A | Standard |
| Interface, Connector B | 360 1100 Evolve module |
| Interface Feature, connector B | Standard |
| Link Count | 6 |
| Wiring | T568B |

Dimensions

| | |
|---|---------|
| Cable Assembly Length Range (m) | 2 – 90 |
| Cable Assembly Length Range (ft) | 7 – 295 |

Electrical Specifications

| | |
|-------------------------------|---------|
| dc Resistance, maximum | 0.3 ohm |
| Safety Voltage Rating | 300 V |

CJNRB | IP06-06LUTP-1100L-1100E

Ordering Tree

C A A A C - 1 1 H A B B F 0 5 0

| Cable Type | Connector B | Orientation A | Orientation B |
|---------------------------------------|--|-------------------------|-------------------------|
| A Cat 6A X10D – U/UTP (Plenum) | A Outlet* – Single Row Standard Density | 1 Trident Series Flat | 1 Trident Series Flat |
| B Cat 6A X10D – U/UTP (Riser) | B Outlet* – Dual Row Standard Density | 2 Right Paired Flat | 2 Right Paired Flat |
| C Cat 6A X10D – U/UTP (LSZH) | C Outlet* – Dual Row High Density | 3 Right Series Flat | 3 Right Series Flat |
| D Cat 6A X10D – F/UTP (Plenum) | G RJ45 Plug* – Single Row Standard Density | 4 Left Paired Flat | 4 Left Paired Flat |
| E Cat 6A X10D – F/UTP (Riser) | H RJ45 Plug* – Dual Row Standard Density | 5 Left Series Flat | 5 Left Series Flat |
| F Cat 6A X10D – F/UTP (LSZH) | J RJ45 Plug* – Dual Row High Density | 6 Trident Paired Flat | 6 Trident Paired Flat |
| G Cat 6 XL – U/UTP (Plenum) | N 1100 Module | A Trident Series Angled | A Trident Series Angled |
| H Cat 6 XL – U/UTP (Riser) | R 360 1100 Evolve Module | B Right Paired Angled | B Right Paired Angled |
| J Cat 6 XL – U/UTP (LSZH) | S OneLink 2x6 | C Right Series Angled | C Right Series Angled |
| Q Cat 6A X10D – S/FTP (LSZH) | T OneLink 2x4 | D Left Paired Angled | D Left Paired Angled |
| R Cat 6 – U/UTP Class B Rated (LSZH) | | E Left Series Angled | E Left Series Angled |
| S Cat 6A – U/UTP Class B Rated (LSZH) | | F Trident Paired Angled | F Trident Paired Angled |
| Y Cat 6A X10D SD – U/UTP (Riser) | | | X Not Applicable |

| Connector A | Link | Outlet Color | UOM | Length |
|--|------|------------------|---------|--------|
| A Outlet* – Single Row Standard Density | B 6 | 0 Not Applicable | F Foot | 12 XXX |
| B Outlet* – Dual Row Standard Density | C 8 | 1 Black (BK) | M Meter | |
| C Outlet* – Dual Row High Density | D 12 | 2 Blue (BL) | | |
| G RJ45 Plug* – Single Row Standard Density | E 16 | 8 White (WH) | | |
| H RJ45 Plug* – Dual Row Standard Density | F 18 | | | |
| J RJ45 Plug* – Dual Row High Density | G 24 | | | |
| N 1100 Module | | | | |
| R 360 1100 Evolve Module | | | | |
| S OneLink 2x6 | | | | |
| T OneLink 2x4 | | | | |
| X Unterminated | | | | |

| Bundling | Jacket Color | Labeling |
|---------------|--------------|-----------------|
| H Hook-n-Loop | B White (WH) | A Generic Label |
| S Sleaving | C Slate (SL) | |
| | Z Blue (BL) | |

* Cords > 1m are authorized for use in channels and are an effective standalone method used to connect active devices
 * Cords < 1m are also valid elements for use in a channel or as an equipment interconnect, but due to their limited length are not guaranteed to meet component compliance requirements that were developed to assess the quality of longer cords

Environmental Specifications

| | |
|------------------------------|--------------------------------------|
| Operating Temperature | -10 °C to +60 °C (+14 °F to +140 °F) |
| Environmental Space | Low Smoke Zero Halogen (LSZH) |
| Flammability Rating | UL 94 V-0 |

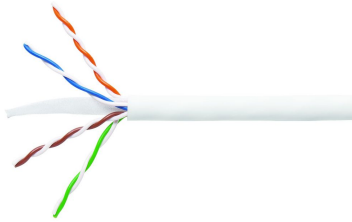
Regulatory Compliance/Certifications

| | |
|---------------|--|
| Agency | Classification |
| ISO 9001:2015 | Designed, manufactured and/or distributed under this quality management system |

Included Products

- 3071E-4/23 – GigaSPEED XL® 3071 ETL Verified Category 6 U/UTP Cable, low smoke zero halogen, 4 pair count
- 760151167
360-IPR-1100-GS3-DM6 – SYSTIMAX 360™ GigaSPEED XL® 1100GS3 Evolve Category 6 U/UTP Distribution Module, 6 port

3071E-4/23



GigaSPEED XL® 3071 ETL Verified Category 6 U/UTP Cable, low smoke zero halogen, 4 pair count

Product Classification

| | |
|------------------------------|---|
| Regional Availability | Asia Australia/New Zealand EMEA Latin America |
| Portfolio | SYSTIMAX® |
| Product Type | Twisted pair cable |
| Product Brand | GigaSPEED XL® |

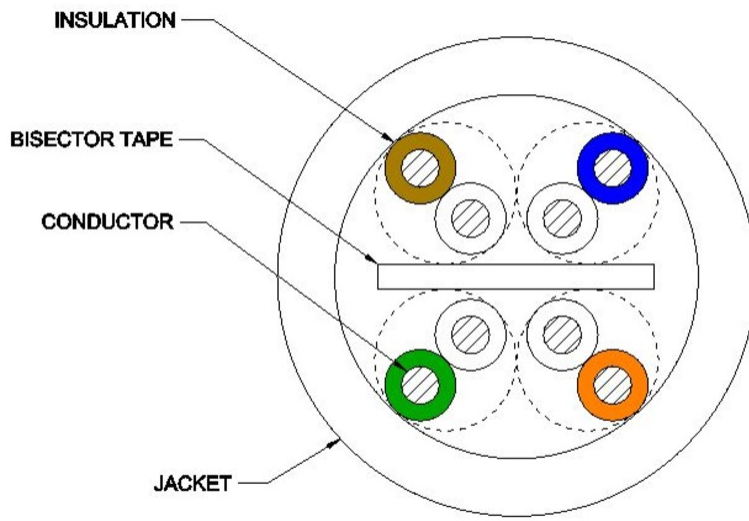
General Specifications

| | |
|--------------------------------|---|
| Product Number | 3071E |
| ANSI/TIA Category | 6 |
| Cable Component Type | Horizontal |
| Cable Type | U/UTP (unshielded) |
| Conductor Type, singles | Solid |
| Conductors, quantity | 8 |
| Pairs, quantity | 4 |
| Separator Type | Bisector |
| Transmission Standards | ANSI/TIA-568.2-D CENELEC EN 50288-6-1 ISO/IEC 11801 Class E |

Dimensions

| | |
|--------------------------------------|---------------------|
| Diameter Over Jacket, nominal | 5.918 mm 0.233 in |
| Jacket Thickness | 0.508 mm 0.02 in |
| Conductor Gauge, singles | 23 AWG |

Cross Section Drawing



Electrical Specifications

| | |
|--|---|
| dc Resistance Unbalance, maximum | 5 % |
| dc Resistance, maximum | 7.61 ohms/100 m 2.32 ohms/100 ft |
| Mutual Capacitance at Frequency | 5.6 nF/100 m @ 1 kHz |
| Nominal Velocity of Propagation (NVP) | 69 % |
| Operating Frequency, maximum | 300 MHz |
| Operating Voltage, maximum | 80 V |
| Remote Powering | Fully complies with the recommendations set forth by IEEE 802.3bt (Type 4) for the safe delivery of power over LAN cable when installed according to ISO/IEC 14763-2, CENELEC EN 50174-1, CENELEC EN 50174-2 or TIA TSB-184-A |

Material Specifications

| | |
|----------------------------|-------------------------------|
| Conductor Material | Bare copper |
| Insulation Material | Polyolefin |
| Jacket Material | Low Smoke Zero Halogen (LSZH) |
| Separator Material | Polyolefin |

Mechanical Specifications

| | |
|---------------------------------|------------------|
| Pulling Tension, maximum | 11.34 kg 25 lb |
|---------------------------------|------------------|

3071E-4/23

Environmental Specifications

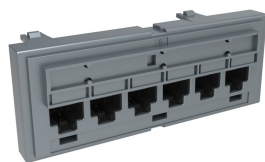
| | |
|---------------------------------|-------------------------------------|
| Installation temperature | 0 °C to +60 °C (+32 °F to +140 °F) |
| Operating Temperature | -20 °C to +60 °C (-4 °F to +140 °F) |
| Acid Gas Test Method | IEC 60754-2 |
| Environmental Space | Low Smoke Zero Halogen (LSZH) |
| Flame Test Method | IEC 60332-3-22 |
| Smoke Test Method | IEC 61034-2 |

Packaging and Weights

| | |
|---------------------|--------------------------|
| Cable weight | 37.204 kg/km 25 lb/kft |
|---------------------|--------------------------|

Regulatory Compliance/Certifications

| Agency | Classification |
|---------------|--|
| ISO 9001:2015 | Designed, manufactured and/or distributed under this quality management system |



SYSTIMAX 360™ GigaSPEED XL® 1100GS3 Evolve Category 6 U/UTP Distribution Module, 6 port

Product Classification

Regional Availability

Asia | Australia/New Zealand | EMEA | Latin America | North America

Portfolio

SYSTIMAX®

Product Type

Module

Product Brand

GigaSPEED XL®

General Specifications

ANSI/TIA Category

6

Cable Type

Unshielded

Color

Cool gray

Conductor Type

Solid | Stranded

Intelligence Type

iPatch® ready

Modules, quantity

1

Rack Type

EIA 19 in

Rack Units

1

Termination Type

IDC

Total Ports, quantity

6

Wiring

T568A | T568B

Dimensions

Height

43.688 mm | 1.72 in

Width

106.68 mm | 4.2 in

Depth

27.432 mm | 1.08 in

Compatible Diameter Over Dielectric, maximum

1.168 mm | 0.046 in

Compatible Diameter Over Dielectric, minimum

0.762 mm | 0.03 in

Compatible Conductor Gauge, solid

22 AWG | 24 AWG

760151167 | 360-IPR-1100-GS3-DM6

Compatible Conductor Gauge, stranded

22 AWG | 24 AWG

Electrical Specifications

Current Rating at Temperature

1.5 A @ 20 °C | 1.5 A @ 68 °F

Dielectric Withstand Voltage, RMS, conductive surface

1,500 Vac @ 60 Hz

Dielectric Withstand Voltage, RMS, contact-to-contact

1,000 Vac @ 60 Hz

Insulation Resistance, minimum

500 MOhm

Material Specifications

Contact Plating Material

Precious metals

Material Type

High-impact, flame retardant, thermoplastic | Powder-coated steel

Termination Contact Plating

Nickel

Mechanical Specifications

Plug Insertion Life, minimum

750 times

Plug Insertion Life, test plug

IEC 60603-7 compliant plug

Plug Retention Force, minimum

133.447 N | 30 lbf

Environmental Specifications

Operating Temperature

-10 °C to +60 °C (+14 °F to +140 °F)

Storage Temperature

-40 °C to +70 °C (-40 °F to +158 °F)

Relative Humidity

Up to 95%, non-condensing

Flammability Rating

UL 94 V-0

Safety Standard

UL | cUL

Packaging and Weights

Packaging quantity

1

Weight, net

0.068 kg | 0.15 lb

Regulatory Compliance/Certifications

Agency

Classification

CHINA-ROHS

Below maximum concentration value

ISO 9001:2015

Designed, manufactured and/or distributed under this quality management system

REACH-SVHC

Compliant as per SVHC revision on www.commscope.com/ProductCompliance

ROHS Compliant

UK-ROHS Compliant

