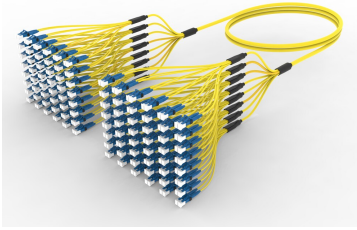


# U4GLCLCCL

## Base Product



Ultra Low Loss ULL TeraSPEED® LC/UPC to LC/UPC Ruggedized fanout Cable, 96-Fiber, LSZH, 12 fiber PmP 2.0 mm /B2ca

## Product Classification

<b>Regional Availability</b>	Asia   Australia/New Zealand   Europe   Latin America   Middle East/Africa   North America
<b>Portfolio</b>	CommScope®
<b>Product Type</b>	Ruggedized fanout
<b>Product Brand</b>	SYSTIMAX ULL
<b>Ordering Note</b>	For additional jacket colors, please contact a CommScope Sales Representative   For lengths greater than 999 ft (304 m), orders must be in meters   Minimum length may vary based on cable configuration

## General Specifications

<b>Color, boot A</b>	Blue
<b>Color, connector A</b>	Green
<b>Color, boot B</b>	Blue
<b>Color, connector B</b>	Blue
<b>Construction Type</b>	Stranded
<b>Furcation Color</b>	Yellow
<b>Interface, Connector A</b>	LC/APC
<b>Interface Feature, connector A</b>	ULL
<b>Interface, Connector B</b>	LC/UPC
<b>Interface Feature, connector B</b>	ULL
<b>Jacket Color</b>	Yellow
<b>Fibers per Subunit, quantity</b>	12
<b>Total Fibers, quantity</b>	96

## Dimensions

<b>Cable Assembly Length Range (m)</b>	3 – 305
--	---------

# U4GLCLCCL

---

**Cable Assembly Length Range (ft)** 10 – 999

## Optical Specifications

**Fiber Mode** Singlemode

**Fiber Type** G.657.A2, TeraSPEED®

## Environmental Specifications

**Operating Temperature** -10 °C to +60 °C (+14 °F to +140 °F)

**EN50575 CPR Cable EuroClass Fire Performance** B2ca

**Environmental Space** Indoor | Low Smoke Zero Halogen (LSZH)

## Regulatory Compliance/Certifications

<b>Agency</b>	<b>Classification</b>
ANATEL	Compliant
CHINA-ROHS	Below maximum concentration value
ISO 9001:2015	Designed, manufactured and/or distributed under this quality management system
REACH-SVHC	Compliant as per SVHC revision on <a href="http://www.commscope.com/ProductCompliance">www.commscope.com/ProductCompliance</a>
ROHS	Compliant
UK-ROHS	Compliant

