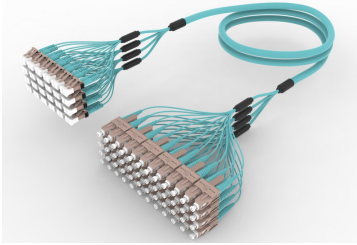


# FNXLCSCAH

## Base Product



OM4 LC/UPC to SC/UPC 48-Fiber InstaPATCH® 360 Ruggedized Fanout Cable, Low Smoke Zero Halogen

## Product Classification

<b>Regional Availability</b>	Asia   Australia/New Zealand   China   Europe   India   Latin America   Middle East/Africa   North America
<b>Portfolio</b>	CommScope®
<b>Product Type</b>	Ruggedized fanout
<b>Product Brand</b>	SYSTIMAX InstaPATCH® 360
<b>Ordering Note</b>	For lengths greater than 999 ft (304 m), orders must be in meters   Minimum length may vary based on cable configuration   Not available in the United States or Canada

## General Specifications

<b>Color, boot A</b>	Aqua
<b>Color, connector A</b>	Beige
<b>Color, boot B</b>	Aqua
<b>Color, connector B</b>	Beige
<b>Construction Type</b>	Stranded
<b>Furcation Color</b>	Aqua
<b>Interface, Connector A</b>	LC/UPC
<b>Interface, Connector B</b>	SC/UPC
<b>Jacket Color</b>	Aqua
<b>Fibers per Subunit, quantity</b>	12
<b>Total Fibers, quantity</b>	48

## Dimensions

<b>Cable Assembly Length Range (m)</b>	3 – 305
<b>Cable Assembly Length Range (ft)</b>	8 – 999

## Ordering Tree

# FNXLCSCAH



## Mechanical Specifications

**Cable Retention Strength, maximum** 11.24 lb @ 0° | 4.40 lb @ 90°

## Optical Specifications

**Fiber Mode** Multimode

**Fiber Type** OM4, LazrSPEED®

## Environmental Specifications

**Operating Temperature** -10 °C to +60 °C (+14 °F to +140 °F)

**Environmental Space** Dual Rated LSZH/Riser | Indoor

## Regulatory Compliance/Certifications

Agency	Classification
ISO 9001:2015	Designed, manufactured and/or distributed under this quality management system

## Included Products

- 460125198 – Pre-Radiused LC Connector duplex for 1.6 mm Fiber, multimode
- 460125750 – LazrSPEED® Pre-Radiused SC Connector for 1.6 mm Fiber Cordage, Duplex, multimode
- N-048-MP-5K-F12 – Fiber indoor cable, LazrSPEED® Low Smoke Zero Halogen Riser MPO Trunk, 48 fiber multi-unit

# FNXLCSCAH

---

with 12 fiber subunits, Gel-free, Multimode OM4, Feet jacket marking, Dca flame rating