

# 2VV-33C-R4



8-port multibeam antenna, 8x 1695–2690 MHz, 4x 33° HPBW, 4x RET

- Enhances network capacity and spectrum utilization when used in six sector applications
- Reduces antenna count to minimize Cap-Ex and Op-Ex costs – 3 antennas required for 6 sector configurations

## OBSOLETE

This product was discontinued on: **November 30, 2023**

### Replaced By:

2VV-33C-R4-V6

8-port multibeam antenna, 8x 1695–2690 MHz, 4x 33° HPBW, 4x RET, has tilt scales

## General Specifications

<b>Antenna Type</b>	Multibeam
<b>Band</b>	Single band
<b>Color</b>	Light Gray (RAL 7035)
<b>Grounding Type</b>	RF connector inner conductor and body grounded to reflector and mounting bracket
<b>Performance Note</b>	Outdoor usage   Wind loading figures are validated by wind tunnel measurements described in white paper WP-112534-EN
<b>Radome Material</b>	Fiberglass, UV resistant
<b>Radiator Material</b>	Low loss circuit board
<b>RF Connector Interface</b>	4.3-10 Female
<b>RF Connector Location</b>	Bottom
<b>RF Connector Quantity, high band</b>	8
<b>RF Connector Quantity, mid band</b>	0
<b>RF Connector Quantity, low band</b>	0
<b>RF Connector Quantity, total</b>	8

## Remote Electrical Tilt (RET) Information

<b>RET Hardware</b>	CommRET v2
<b>RET Interface</b>	8-pin DIN Female   8-pin DIN Male
<b>RET Interface, quantity</b>	2 female   2 male
<b>Input Voltage</b>	10–30 Vdc

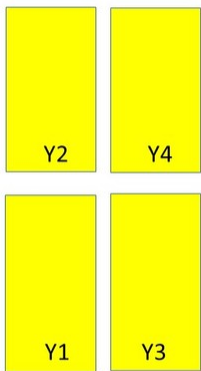
# 2VV-33C-R4

<b>Internal RET</b>	High band (4)
<b>Power Consumption, idle state, maximum</b>	1 W
<b>Power Consumption, normal conditions, maximum</b>	8 W
<b>Protocol</b>	3GPP/AISG 2.0 (Single RET)

## Dimensions

<b>Width</b>	395 mm   15.551 in
<b>Depth</b>	228 mm   8.976 in
<b>Length</b>	2499 mm   98.386 in
<b>Net Weight, without mounting kit</b>	36 kg   79.366 lb

## Array Layout



Array	Freq (MHz)	Conns	RET (SRET)	AISG RET UID
Y1	1695-2690	1-2	1	CPXXXXXXXXXXXXXXXXY1
Y2	1695-2690	3-4	2	CPXXXXXXXXXXXXXXXXY2
Y3	1695-2690	5-6	3	CPXXXXXXXXXXXXXXXXY3
Y4	1695-2690	7-8	4	CPXXXXXXXXXXXXXXXXY4

Bottom

(Sizes of colored boxes are not true depictions of array sizes)

## Port Configuration

# 2VV-33C-R4



## Electrical Specifications

<b>Impedance</b>	50 ohm
<b>Operating Frequency Band</b>	1695 – 2690 MHz
<b>Polarization</b>	±45°
<b>Total Input Power, maximum</b>	1,200 W @ 50 °C

## Electrical Specifications

Frequency Band, MHz	1695–1880	1850–1990	1920–2180	2300–2400	2490–2690
<b>Gain, dBi</b>	18.4	19	19.4	19.8	20.2
<b>Beam Centers, Horizontal, degrees</b>	±27	±27	±27	±27	±27
<b>Beamwidth, Horizontal, degrees</b>	39	37	36	34	29
<b>Beamwidth, Vertical, degrees</b>	7.9	7.4	6.9	6.2	5.6
<b>Beam Tilt, degrees</b>	2–12	2–12	2–12	2–12	2–12
<b>USLS (First Lobe), dB</b>	16	16	16	20	19
<b>Front-to-Back Ratio at 180°, dB</b>	32	33	33	33	31
<b>Isolation, Cross Polarization, dB</b>	25	25	25	25	25

# 2VV-33C-R4

<b>Isolation, Beam to Beam, dB</b>	28	28	28	28	28
<b>VSWR   Return loss, dB</b>	1.5   14.0	1.5   14.0	1.5   14.0	1.5   14.0	1.5   14.0
<b>PIM, 3rd Order, 2 x 20 W, dBc</b>	-150	-150	-150	-150	-150
<b>Input Power per Port at 50°C, maximum, watts</b>	200	200	200	200	200

## Mechanical Specifications

<b>Mechanical Tilt Range</b>	0°–12°
<b>Wind Loading @ Velocity, frontal</b>	525.0 N @ 150 km/h (118.0 lbf @ 150 km/h)
<b>Wind Loading @ Velocity, lateral</b>	386.0 N @ 150 km/h (86.8 lbf @ 150 km/h)
<b>Wind Loading @ Velocity, maximum</b>	898.0 N @ 150 km/h (201.9 lbf @ 150 km/h)
<b>Wind Loading @ Velocity, rear</b>	540.0 N @ 150 km/h (121.4 lbf @ 150 km/h)
<b>Wind Speed, maximum</b>	241 km/h (150 mph)

## Packaging and Weights

<b>Width, packed</b>	505 mm   19.882 in
<b>Depth, packed</b>	386 mm   15.197 in
<b>Length, packed</b>	2631 mm   103.583 in
<b>Weight, gross</b>	51.8 kg   114.199 lb

## Regulatory Compliance/Certifications

<b>Agency</b>	<b>Classification</b>
CHINA-ROHS	Above maximum concentration value
ISO 9001:2015	Designed, manufactured and/or distributed under this quality management system
ROHS	Compliant/Exempted
UK-ROHS	Compliant/Exempted



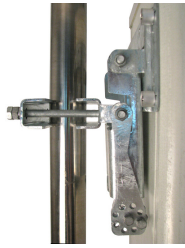
## Included Products

BSAMNT-4	–	Wide Profile Antenna Downtilt Mounting Kit for 2.4 - 4.5 in (60 - 115 mm) OD round members. Kit contains one scissor top bracket set and one bottom bracket set.
----------	---	--

## \* Footnotes

<b>Performance Note</b>	Severe environmental conditions may degrade optimum performance
-------------------------	---

# BSAMNT-4



Wide Profile Antenna Downtilt Mounting Kit for 2.4 - 4.5 in (60 - 115 mm) OD round members. Kit contains one scissor top bracket set and one bottom bracket set.

## Product Classification

**Product Type** Downtilt mounting kit

## General Specifications

**Application** Outdoor

**Color** Silver

## Dimensions

**Compatible Diameter, maximum** 115 mm | 4.528 in

**Compatible Diameter, minimum** 60 mm | 2.362 in

**Weight, net** 6.5 kg | 14.33 lb

## Material Specifications

**Material Type** Galvanized steel

## Packaging and Weights

**Included** Brackets | Hardware

**Packaging quantity** 1

## Regulatory Compliance/Certifications

Agency	Classification
CHINA-ROHS	Below maximum concentration value
ISO 9001:2015	Designed, manufactured and/or distributed under this quality management system
REACH-SVHC	Compliant as per SVHC revision on <a href="http://www.commscope.com/ProductCompliance">www.commscope.com/ProductCompliance</a>
ROHS	Compliant
UK-ROHS	Compliant

