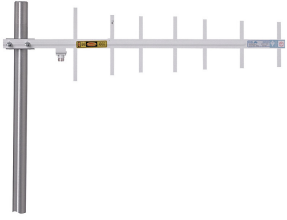


# ASPJ810



1-port sector antenna, 870–960 MHz, 60° HPBW, fixed electrical tilt

- Enclosed driven element protects against icing, water penetration, and corrosion
- Unique mounts allow vertical or horizontal polarization

## OBSOLETE

This product was discontinued on: February 15, 2023

## General Specifications

<b>Antenna Type</b>	Sector
<b>Band</b>	Single band
<b>Color</b>	Off-white
<b>Grounding Type</b>	RF connector inner conductor and body grounded to reflector and mounting bracket
<b>Performance Note</b>	Outdoor usage
<b>Radiator Material</b>	Aluminum
<b>RF Connector Interface</b>	N Female
<b>RF Connector Location</b>	Bottom
<b>RF Connector Quantity, high band</b>	0
<b>RF Connector Quantity, mid band</b>	0
<b>RF Connector Quantity, low band</b>	1
<b>RF Connector Quantity, total</b>	1

## Dimensions

<b>Width</b>	180.3 mm   7.098 in
<b>Depth</b>	5.8 mm   0.228 in
<b>Length</b>	685.8 mm   27 in
<b>Net Weight, without mounting kit</b>	0.9 kg   1.984 lb

## Electrical Specifications

<b>Impedance</b>	50 ohm
<b>Operating Frequency Band</b>	870 – 960 MHz
<b>Polarization</b>	Vertical

# ASPJ810

---

## Electrical Specifications

<b>Frequency Band, MHz</b>	<b>870–960</b>
<b>Gain, dBi</b>	12.1
<b>Beamwidth, Horizontal, degrees</b>	60
<b>Beamwidth, Vertical, degrees</b>	30
<b>Beam Tilt, degrees</b>	0
<b>Front-to-Back Ratio at 180°, dB</b>	20
<b>VSWR   Return loss, dB</b>	1.5   14.0
<b>Input Power per Port, maximum, watts</b>	150

## Mechanical Specifications

<b>Wind Loading @ Velocity, maximum</b>	71.2 N @ 100 mph (16.0 lbf @ 100 mph)
<b>Wind Speed, maximum</b>	241 km/h (150 mph)

## Packaging and Weights

<b>Included</b>	U-bolts
-----------------	---------

## Regulatory Compliance/Certifications

<b>Agency</b>	<b>Classification</b>
CE	Compliant with the relevant CE product directives
CHINA-ROHS	Below maximum concentration value
ISO 9001:2015	Designed, manufactured and/or distributed under this quality management system
REACH-SVHC	Compliant as per SVHC revision on <a href="http://www.commscope.com/ProductCompliance">www.commscope.com/ProductCompliance</a>
ROHS	Compliant
UK-ROHS	Compliant



## \* Footnotes

<b>Performance Note</b>	Severe environmental conditions may degrade optimum performance
-------------------------	-----------------------------------------------------------------