

CMAX-EXT-CPUSEI53



Cell-Max™ Low PIM Directional Outdoor Antenna, 698–960 MHz and 1710–2700 MHz

OBSOLETE

This product was discontinued on: July 30, 2022

Replaced By:

CMAX-EXT-43-I53 Cell-Max™ Low PIM Directional Outdoor Antenna, 698–960 MHz and 1710–2700 MHz, 4.3-10

Product Classification

Product Type Over-the-head stadium antenna
Product Brand Cell-Max™

General Specifications

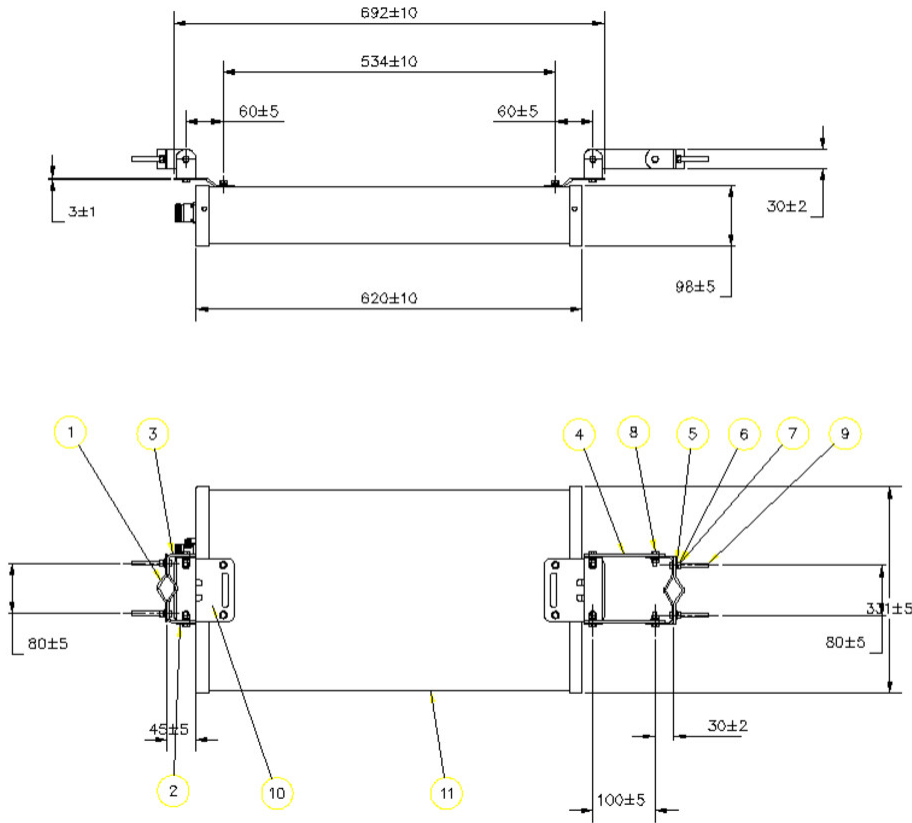
Application Indoor/Outdoor
Antenna Type Directional
Antenna Array Characteristic SISO
Polarization Vertical
Color White (RAL 9016)
Mounting Poles between 25–60 mm with supplied clamps
Number of Ports 1
Radome Material PVC, UV resistant
RF Connector Interface 7-16 DIN Female

Dimensions

Width 331 mm | 13.032 in
Depth 98 mm | 3.858 in
Length 620 mm | 24.409 in

CMAX-EXT-CPUSEI53

Outline Drawing



Electrical Specifications

Impedance	50 ohm
Lightning Protection	dc Ground
Operating Frequency Band	1710 – 2700 MHz 698 – 960 MHz
Electrical Note	Values typical, unless otherwise stated

Electrical Specifications

Frequency Band, MHz	698–800	800–960	1710–2200	2200–2700
Gain, dBi	10	11	11	11
Beamwidth, Horizontal, degrees	68	60	60	52
Beamwidth, Vertical, degrees	30	28	30	30
Front-to-Back Ratio at 180°, dB	18	18	20	20
VSWR Return loss, dB	1.8 10.9	1.8 10.9	1.8 10.9	1.8 10.9
PIM, 3rd Order, 2 x 20 W, dBc	-153	-153	-153	-153

CMAX-EXT-CPUSEI53

Input Power per Port, maximum, watts 100 100 100 100

Mechanical Specifications

Wind Loading @ Velocity, maximum 686.0 N @ 216 km/h (154.2 lbf @ 216 km/h)

Wind Speed, maximum 216 km/h | 134.216 mph

Environmental Specifications

Operating Temperature -40 °C to +60 °C (-40 °F to +140 °F)

Relative Humidity Up to 100%

Ingress Protection Test Method IEC 60529:2001, IP65

Packaging and Weights

Width, packed 350 mm | 13.78 in

Depth, packed 160 mm | 6.299 in

Length, packed 830 mm | 32.677 in

Packaging quantity 1

Weight, gross 7.4 kg | 16.314 lb

Weight, net 4.7 kg | 10.362 lb

Regulatory Compliance/Certifications

Agency	Classification
CHINA-ROHS	Below maximum concentration value
ISO 9001:2015	Designed, manufactured and/or distributed under this quality management system
REACH-SVHC	Compliant as per SVHC revision on www.commscope.com/ProductCompliance
ROHS	Compliant
UK-ROHS	Compliant

