

FFHH-65A-R3



8-port sector antenna, 4x 617-806 and 4x 1695–2360 MHz, 65° HPBW, 3x RET, 600 MHz-Ready Antenna Technology

This product will be discontinued on: March 30, 2024

General Specifications

Antenna Type	Sector
Band	Multiband
Color	Light Gray (RAL 7035)
Grounding Type	RF connector inner conductor and body grounded to reflector and mounting bracket
Performance Note	Outdoor usage Wind loading figures are validated by wind tunnel measurements described in white paper WP-112534-EN
Radome Material	Fiberglass, UV resistant
Radiator Material	Aluminum Low loss circuit board
Reflector Material	Aluminum
RF Connector Interface	4.3-10 Female
RF Connector Location	Bottom
RF Connector Quantity, high band	4
RF Connector Quantity, low band	4
RF Connector Quantity, total	8

Remote Electrical Tilt (RET) Information

RET Interface	8-pin DIN Female 8-pin DIN Male
RET Interface, quantity	1 female 1 male
Input Voltage	10–30 Vdc
Internal RET	High band (2) Low band (1)
Power Consumption, idle state, maximum	1 W
Power Consumption, normal conditions, maximum	10 W
Protocol	3GPP/AISG 2.0 (Single RET)

FFHH-65A-R3

Dimensions

Width	640 mm 25.197 in
Depth	235 mm 9.252 in
Length	1224 mm 48.189 in
Net Weight, without mounting kit	33 kg 72.752 lb

Array Layout



Array	Freq (MHz)	Conns	RET (SRET)	AISG RET UID
R1	617-806	1-2	1	ANxxxxxxxxxxxxxxxxx1
R2	617-806	3-4		
Y1	1695-2360	5-6	2	ANxxxxxxxxxxxxxxxxx2
Y2	1695-2360	7-8	3	ANxxxxxxxxxxxxxxxxx3

Left Right
Bottom

(Sizes of colored boxes are not true depictions of array sizes)

Port Configuration

FFHH-65A-R3



Electrical Specifications

Impedance	50 ohm
Operating Frequency Band	1695 – 2360 MHz 617 – 806 MHz
Polarization	±45°
Total Input Power, maximum	900 W @ 50 °C

Electrical Specifications

Frequency Band, MHz	617–698	698–806	1695–1880	1850–1990	1920–2200	2300–2360
Gain, dBi	12.9	13.4	16.6	17.1	17.9	18.4
Beamwidth, Horizontal, degrees	65	61	67	63	60	52
Beamwidth, Vertical, degrees	20.7	19.1	8	7.5	7	6.2
Beam Tilt, degrees	5–22	5–22	2–12	2–12	2–12	2–12
USLS (First Lobe), dB	15	14	16	17	18	18
Front-to-Back Ratio at 180°, dB	29	30	38	36	37	39
Isolation, Cross Polarization, dB	25	25	25	25	25	25
Isolation, Inter-band, dB	25	25	25	25	25	25
VSWR Return loss, dB	1.5 14.0	1.5 14.0	1.5 14.0	1.5 14.0	1.5 14.0	1.5 14.0

FFHH-65A-R3

PIM, 3rd Order, 2 x 20 W, dBc	-153	-153	-153	-153	-153
Input Power per Port at 50°C, maximum, watts	250	250	200	200	200

Electrical Specifications, BASTA

Frequency Band, MHz	617–698	698–806	1695–1880	1850–1990	1920–2200	2300–2360
Gain by all Beam Tilts, average, dBi	12.6	12.8	16.1	16.9	17.3	18.1
Gain by all Beam Tilts Tolerance, dB	±0.6	±0.8	±0.7	±0.4	±0.6	±0.5
Gain by Beam Tilt, average, dBi	5° 12.8 14° 12.7 22° 12.1	5° 13.2 14° 12.9 22° 12.0	2° 16.1 7° 16.2 12° 15.8	2° 16.9 7° 17.0 12° 16.6	2° 17.1 7° 17.4 12° 17.0	2° 17.9 7° 18.3 12° 17.7
Beamwidth, Horizontal Tolerance, degrees	±6.5	±5	±4.2	±4.2	±6.2	±5.8
Beamwidth, Vertical Tolerance, degrees	±1.5	±1.8	±0.5	±0.5	±0.6	±0.3
USLS, beampeak to 20° above beampeak, dB			14	15	15	15
Front-to-Back Total Power at 180° ± 30°, dB	21	20	31	31	31	30
CPR at Boresight, dB	18	18	17	18	18	19
CPR at Sector, dB	7	5	9	7	8	8

Mechanical Specifications

Wind Loading @ Velocity, frontal	505.0 N @ 150 km/h (113.5 lbf @ 150 km/h)
Wind Loading @ Velocity, lateral	156.0 N @ 150 km/h (35.1 lbf @ 150 km/h)
Wind Loading @ Velocity, maximum	688.0 N @ 150 km/h (154.7 lbf @ 150 km/h)
Wind Loading @ Velocity, rear	520.0 N @ 150 km/h (116.9 lbf @ 150 km/h)
Wind Speed, maximum	241 km/h (150 mph)

Packaging and Weights

Width, packed	752 mm 29.606 in
Depth, packed	387 mm 15.236 in
Length, packed	1379 mm 54.291 in
Weight, gross	49.5 kg 109.129 lb

Regulatory Compliance/Certifications

Agency	Classification
---------------	-----------------------

FFHH-65A-R3

CHINA-ROHS	Below maximum concentration value
ISO 9001:2015	Designed, manufactured and/or distributed under this quality management system
REACH-SVHC	Compliant as per SVHC revision on www.commscope.com/ProductCompliance
ROHS	Compliant
UK-ROHS	Compliant



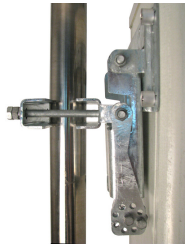
Included Products

BSAMNT-4	–	Wide Profile Antenna Downtilt Mounting Kit for 2.4 - 4.5 in (60 - 115 mm) OD round members. Kit contains one scissor top bracket set and one bottom bracket set.
----------	---	--

* Footnotes

Performance Note	Severe environmental conditions may degrade optimum performance
-------------------------	---

BSAMNT-4



Wide Profile Antenna Downtilt Mounting Kit for 2.4 - 4.5 in (60 - 115 mm) OD round members. Kit contains one scissor top bracket set and one bottom bracket set.

Product Classification

Product Type Downtilt mounting kit

General Specifications

Application Outdoor

Color Silver

Dimensions

Compatible Diameter, maximum 115 mm | 4.528 in

Compatible Diameter, minimum 60 mm | 2.362 in

Weight, net 6.5 kg | 14.33 lb

Material Specifications

Material Type Galvanized steel

Packaging and Weights

Included Brackets | Hardware

Packaging quantity 1

Regulatory Compliance/Certifications

Agency	Classification
CHINA-ROHS	Below maximum concentration value
ISO 9001:2015	Designed, manufactured and/or distributed under this quality management system
REACH-SVHC	Compliant as per SVHC revision on www.commscope.com/ProductCompliance
ROHS	Compliant
UK-ROHS	Compliant

