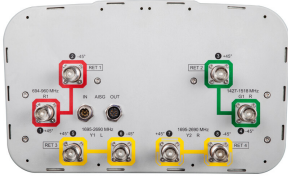


# RYVV-65B-R4-V2



8-port sector antenna, 2x 694–960, 2x 1427–1518 and 4x 1695–2690 MHz, 65° HPBW, 4x RET

- Includes 2-Ports which support operation over 1427-1518 MHz (including 1400 MHz “L-Band” applications in Europe)
- All Internal RET actuators are connected in “Cascaded SRET” configuration
- Uses the 4.3-10 connector which is 40 percent smaller than the 7-16 DIN connector

**OBSOLETE**

This product was discontinued on: March 27, 2020

## General Specifications

<b>Antenna Type</b>	Sector
<b>Band</b>	Multiband
<b>Grounding Type</b>	RF connector inner conductor and body grounded to reflector and mounting bracket
<b>Performance Note</b>	Outdoor usage   Wind loading figures are validated by wind tunnel measurements described in white paper WP-112534-EN
<b>Radome Material</b>	Fiberglass, UV resistant
<b>Reflector Material</b>	Aluminum
<b>RF Connector Interface</b>	4.3-10 Female
<b>RF Connector Location</b>	Bottom
<b>RF Connector Quantity, high band</b>	6
<b>RF Connector Quantity, low band</b>	2
<b>RF Connector Quantity, total</b>	8

## Remote Electrical Tilt (RET) Information

<b>RET Hardware</b>	CommRET v1
<b>RET Interface</b>	8-pin DIN Female   8-pin DIN Male
<b>RET Interface, quantity</b>	1 female   1 male
<b>Input Voltage</b>	10–30 Vdc
<b>Internal RET</b>	High band (3)   Low band (1)
<b>Power Consumption, idle state, maximum</b>	1 W

# RYVV-65B-R4-V2

**Power Consumption, normal conditions, maximum** 8 W  
**Protocol** 3GPP/AISG 2.0 (Single RET)

## Dimensions

**Width** 350 mm | 13.78 in  
**Depth** 208 mm | 8.189 in  
**Length** 1828 mm | 71.969 in  
**Net Weight, without mounting kit** 25 kg | 55.115 lb

## Array Layout



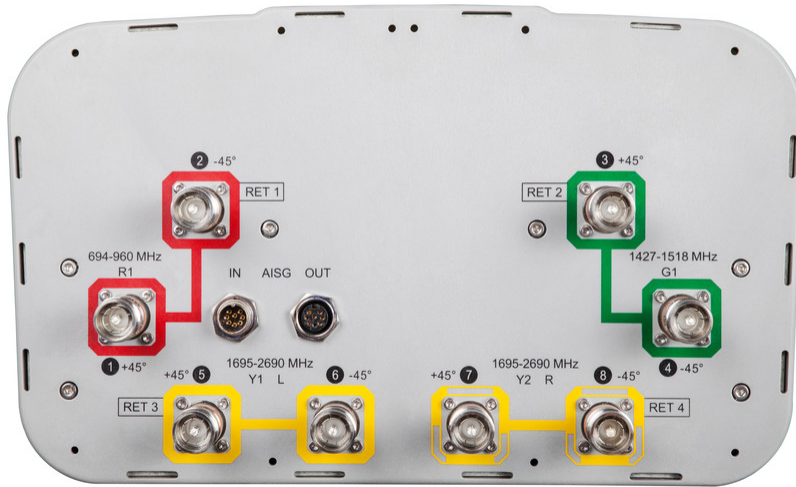
Array	Freq (MHz)	Conns	RET (SRET)	AISG RET UID
R1	694-960	1-2	1	CPxxxxxxxxxxxxxxxxR1
G1	1427-1518	3-4	2	CPxxxxxxxxxxxxxxxxG1
Y1	1695-2690	5-6	3	CPxxxxxxxxxxxxxxxxY1
Y2	1695-2690	7-8	4	CPxxxxxxxxxxxxxxxxY2

Left Right  
Bottom

(Sizes of colored boxes are not true depictions of array sizes)

## Port Configuration

# RYVV-65B-R4-V2



## Electrical Specifications

<b>Impedance</b>	50 ohm
<b>Operating Frequency Band</b>	1427 – 1518 MHz   1695 – 2690 MHz   694 – 960 MHz
<b>Polarization</b>	±45°
<b>Total Input Power, maximum</b>	800 W @ 50 °C

## Electrical Specifications

Frequency Band, MHz	694–790	790–890	890–960	1427–1518	1695–1920	1920–2180	2300–2500	2500–2690
<b>Gain, dBi</b>	15.1	15.7	15.9	16	17.7	18.5	18.8	18.5
<b>Beamwidth, Horizontal, degrees</b>	67	65	63	66	60	60	62	63
<b>Beamwidth, Vertical, degrees</b>	11.8	10.6	9.8	7	5.5	5	4.4	4.1
<b>Beam Tilt, degrees</b>	2–14	2–14	2–14	2–12	2–12	2–12	2–12	2–12
<b>USLS (First Lobe), dB</b>	16	17	16	17	16	17	17	16
<b>Front-to-Back Ratio at 180°, dB</b>	31	33	34	31	31	36	35	31
<b>Isolation, Cross Polarization, dB</b>	28	28	28	28	28	28	28	28
<b>Isolation, Inter-band, dB</b>	30	30	30	28	30	30	30	30
<b>VSWR   Return loss, dB</b>	1.5 14.0	1.5 14.0	1.5 14.0	1.5 14.0	1.5 14.0	1.5 14.0	1.5 14.0	1.5 14.0

# RYVV-65B-R4-V2

<b>PIM, 3rd Order, 2 x 20 W, dBc</b>	-150	-150	-150	-150	-150	-150	-150	-150
<b>Input Power per Port at 50°C, maximum, watts</b>	300	300	300	250	250	250	200	200

## Mechanical Specifications

<b>Wind Loading @ Velocity, frontal</b>	301.0 N @ 150 km/h (67.7 lbf @ 150 km/h)
<b>Wind Loading @ Velocity, lateral</b>	254.0 N @ 150 km/h (57.1 lbf @ 150 km/h)
<b>Wind Loading @ Velocity, maximum</b>	638.0 N @ 150 km/h (143.4 lbf @ 150 km/h)
<b>Wind Loading @ Velocity, rear</b>	319.0 N @ 150 km/h (71.7 lbf @ 150 km/h)
<b>Wind Speed, maximum</b>	241 km/h (150 mph)

## Packaging and Weights

<b>Width, packed</b>	456 mm   17.953 in
<b>Depth, packed</b>	357 mm   14.055 in
<b>Length, packed</b>	1975 mm   77.756 in
<b>Weight, gross</b>	38.5 kg   84.878 lb

## Regulatory Compliance/Certifications

<b>Agency</b>	<b>Classification</b>
CE	Compliant with the relevant CE product directives
CHINA-ROHS	Above maximum concentration value
ISO 9001:2015	Designed, manufactured and/or distributed under this quality management system
ROHS	Compliant/Exempted
UK-ROHS	Compliant/Exempted



## Included Products

BSAMNT-3	–	Wide Profile Antenna Downtilt Mounting Kit for 2.4 - 4.5 in (60 - 115 mm) OD round members. Kit contains one scissor top bracket set and one bottom bracket set.
----------	---	--

## \* Footnotes

<b>Performance Note</b>	Severe environmental conditions may degrade optimum performance
-------------------------	---