

RRV4-65D-R6-V2



12-port sector antenna, 4x 694–960 and 8x 1695–2690 MHz, 65° HPBW, 6x RET

- All Internal RET actuators are connected in “Cascaded SRET” configuration
- Supports re-configurable antenna sharing capability enabling control of the internal RET system using up to two separate RET compatible OEM radios

OBSOLETE

This product was discontinued on: **March 31, 2023**

Replaced By:

RRV4-65D-R6-V3 12-port sector antenna, 4x 694–960 and 8x 1695–2690 MHz, 65° HPBW, 6x RET

General Specifications

Antenna Type	Sector
Band	Multiband
Grounding Type	RF connector inner conductor and body grounded to reflector and mounting bracket
Performance Note	Outdoor usage
Radome Material	Fiberglass, UV resistant
Radiator Material	Aluminum Low loss circuit board
Reflector Material	Aluminum
RF Connector Interface	4.3-10 Female
RF Connector Location	Bottom
RF Connector Quantity, high band	8
RF Connector Quantity, low band	4
RF Connector Quantity, total	12

Remote Electrical Tilt (RET) Information

RET Hardware	CommRET v2
RET Interface	8-pin DIN Female 8-pin DIN Male
RET Interface, quantity	2 female 2 male
Input Voltage	10–30 Vdc
Internal RET	High band (4) Low band (2)

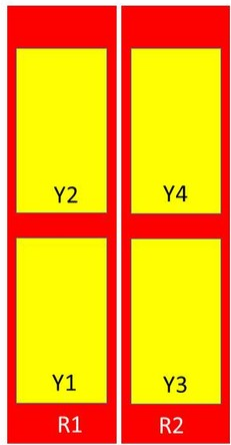
RRV4-65D-R6-V2

Power Consumption, idle state, maximum	1 W
Power Consumption, normal conditions, maximum	8 W
Protocol	3GPP/AISG 2.0 (Single RET)

Dimensions

Width	498 mm 19.606 in
Depth	197 mm 7.756 in
Length	2688 mm 105.827 in
Net Weight, without mounting kit	49.5 kg 109.129 lb

Array Layout



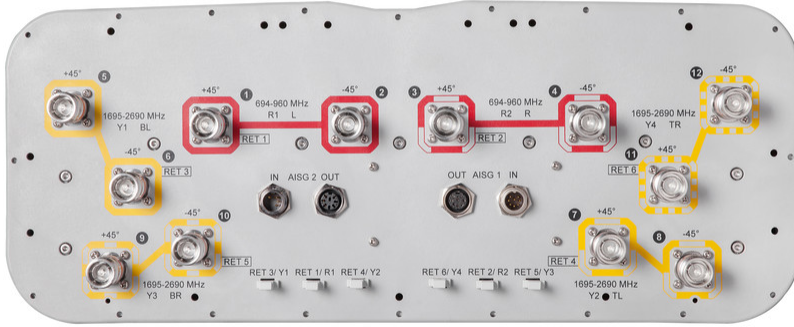
Array	Freq (MHz)	Conns	RET (SRET)	AISG RET UID
R1	694-960	1-2	1	CPxxxxxxxxxxxxxxxxR1
R2	694-960	3-4	2	CPxxxxxxxxxxxxxxxxR2
Y1	1695-2690	5-6	3	CPxxxxxxxxxxxxxxxxY1
Y2	1695-2690	7-8	4	CPxxxxxxxxxxxxxxxxY2
Y3	1695-2690	9-10	5	CPxxxxxxxxxxxxxxxxY3
Y4	1695-2690	11-12	6	CPxxxxxxxxxxxxxxxxY4

Left Bottom Right Bottom

(Sizes of colored boxes are not true depictions of array sizes)

Port Configuration

RRV4-65D-R6-V2



Electrical Specifications

Impedance	50 ohm
Operating Frequency Band	1695 – 2690 MHz 694 – 960 MHz
Polarization	±45°
Total Input Power, maximum	900 W @ 50 °C

Electrical Specifications

Frequency Band, MHz	694–790	790–890	890–960	1695–1880	1850–1990	1920–2180	2300–2500	2500–2690
Gain, dBi	16.2	16.7	16.8	17.3	17.8	18.1	18.3	18
Beamwidth, Horizontal, degrees	71	65	61	60	55	57	63	69
Beamwidth, Vertical, degrees	8.4	7.5	6.9	7.6	7	6.6	5.7	5.4
Beam Tilt, degrees	2–12	2–12	2–12	2–12	2–12	2–12	2–12	2–12
USLS (First Lobe), dB	13	15	15	19	19	19	17	15
Front-to-Back Ratio at 180°, dB	33	32	34	35	37	37	34	31
Isolation, Cross Polarization, dB	28	28	28	28	28	28	28	28
Isolation, Inter-band, dB	28	28	28	28	28	28	28	28
VSWR Return loss, dB	1.5 14.0	1.5 14.0	1.5 14.0	1.5 14.0	1.5 14.0	1.5 14.0	1.5 14.0	1.5 14.0

RRV4-65D-R6-V2

PIM, 3rd Order, 2 x 20 W, dBc	-150	-150	-150	-150	-150	-150	-150	-150
Input Power per Port at 50°C, maximum, watts	300	300	300	250	250	250	250	200

Electrical Specifications, BASTA

Frequency Band, MHz	694–790	790–890	890–960	1695–1880	1850–1990	1920–2180	2300–2500	2500–2690
Gain by all Beam Tilts, average, dBi	15.8	16.4	16.5	16.8	17.4	17.6	17.8	17.3
Gain by all Beam Tilts Tolerance, dB	±0.4	±0.4	±0.5	±0.7	±0.5	±0.6	±0.6	±0.9
Gain by Beam Tilt, average, dBi	2° 15.9 7° 15.9 12° 15.8	2° 16.3 7° 16.6 12° 16.3	2° 16.8 7° 16.7 12° 16.1	2° 16.6 7° 16.9 12° 16.7	2° 17.1 7° 17.5 12° 17.4	2° 17.3 7° 17.7 12° 17.6	2° 17.5 7° 18.0 12° 17.8	2° 16.9 7° 17.4 12° 17.4
Beamwidth, Horizontal Tolerance, degrees	±3.6	±3.7	±4.7	±5.2	±4.7	±5.5	±4.7	±7.8
Beamwidth, Vertical Tolerance, degrees	±0.3	±0.6	±0.4	±0.6	±0.3	±0.5	±0.3	±0.3
USLS, beampeak to 20° above beampeak, dB	13	14	15	13	14	16	15	13
Front-to-Back Total Power at 180° ± 30°, dB	20	21	22	29	30	30	26	25
CPR at Boresight, dB	26	24	19	18	18	20	20	18
CPR at Sector, dB	8	8	8	9	8	7	8	5

Mechanical Specifications

Effective Projective Area (EPA), frontal	1 m ² 10.764 ft ²
Effective Projective Area (EPA), lateral	0.35 m ² 3.767 ft ²
Mechanical Tilt Range	0°–12°
Wind Loading @ Velocity, frontal	1,070.0 N @ 150 km/h (240.5 lbf @ 150 km/h)
Wind Loading @ Velocity, lateral	375.0 N @ 150 km/h (84.3 lbf @ 150 km/h)
Wind Loading @ Velocity, maximum	1,385.0 N @ 150 km/h (311.4 lbf @ 150 km/h)
Wind Loading @ Velocity, rear	880.0 N @ 150 km/h (197.8 lbf @ 150 km/h)
Wind Speed, maximum	241 km/h (150 mph)

Packaging and Weights

Width, packed	608 mm 23.937 in
Depth, packed	352 mm 13.858 in
Length, packed	2880 mm 113.386 in

RRV4-65D-R6-V2

Weight, gross

73 kg | 160.937 lb

Regulatory Compliance/Certifications

Agency

Classification

CHINA-ROHS

Above maximum concentration value

ISO 9001:2015

Designed, manufactured and/or distributed under this quality management system

ROHS

Compliant/Exempted

UK-ROHS

Compliant/Exempted



Included Products

- | | | |
|-----------|---|------------------------------------------------------------------------------------------------------------------------------------------------------------------|
| BSAMNT-4 | - | Wide Profile Antenna Downtilt Mounting Kit for 2.4 - 4.5 in (60 - 115 mm) OD round members. Kit contains one scissor top bracket set and one bottom bracket set. |
| BSAMNT-M4 | - | Middle Downtilt Mounting Kit for Long Antennas for 2.4 - 4.5 in (60 - 115 mm) OD round members. Kit contains one scissor bracket set. |

* Footnotes

Performance Note

Severe environmental conditions may degrade optimum performance