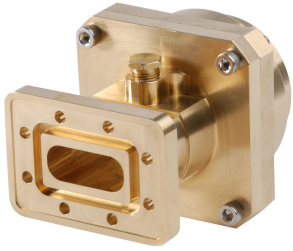


177SEM



Fixed-tuned PDR84 for elliptical waveguide 77

Product Classification

Product Type Elliptical waveguide connector

General Specifications

Attachment Method Tab-flare | Tool-flare

Body Style Straight, fixed-tuned

Inner Contact Plating Unplated

Interface PDR84

Outer Contact Plating Unplated

Pressurizable Yes

Dimensions

Width 88.392 mm | 3.48 in

Length 92.202 mm | 3.63 in

Transition Length 55.118 mm | 2.17 in

Waveguide Size WR112 | WG15 | R84

Electrical Specifications

Insertion Loss, typical 0.01 dB

Operating Frequency Band 7.125 – 8.5 GHz

Peak Power at Frequency, maximum 63.00 kW @ 7.80 GHz

Material Specifications

Material Type Brass

177SEM

Environmental Specifications

Operating Temperature -55 °C to +85 °C (-67 °F to +185 °F)

Storage Temperature -55 °C to +85 °C (-67 °F to +185 °F)

Packaging and Weights

Weight, net 1.4 kg | 3.086 lb

Regulatory Compliance/Certifications

Agency

CHINA-ROHS

ISO 9001:2015

REACH-SVHC

ROHS

Classification

Below maximum concentration value

Designed, manufactured and/or distributed under this quality management system

Compliant as per SVHC revision on www.commscope.com/ProductCompliance

Compliant



* Footnotes

Insertion Loss, typical 0.05v⁻freq (GHz) (not applicable for elliptical waveguide)