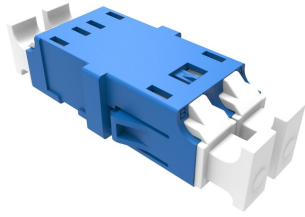


# CP7685-000 | OC-ADP-L1-L1-NFCD

---



## Fiber Optic Duplex Adapter, Singlemode LC/UPC, blue, flangeless

- High quality zirconia ceramic split sleeves ensuring high precision alignment, reliability and improved reconnect ability
- Translucent easy grip dust cap and integrated mounting clips
- High quality one piece housing, no ultrasonic welding

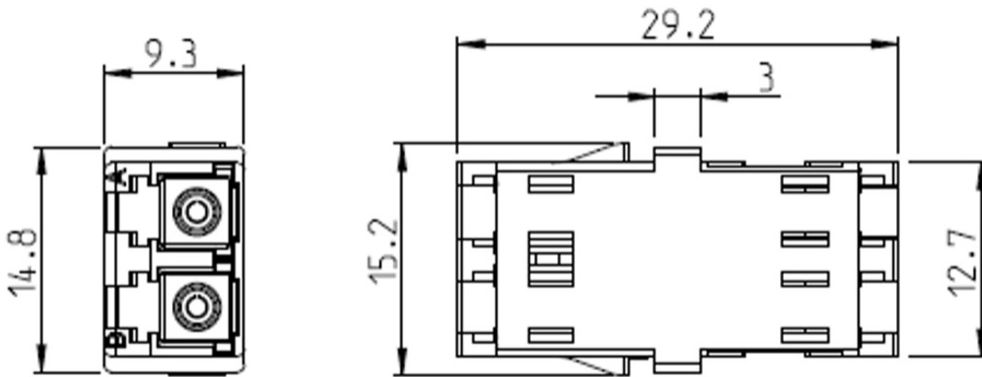
## Product Classification

<b>Regional Availability</b>	Asia   Australia/New Zealand   EMEA   Latin America   North America
<b>Product Type</b>	Fiber adapter
<b>Product Series</b>	OC-ADP

## General Specifications

<b>Body Style</b>	Duplex
<b>Color</b>	Blue
<b>Interface</b>	LC/UPC
<b>Mounting</b>	No flange
<b>Total Ports, quantity</b>	2
<b>Transmission Standards</b>	IEC 60754-1   IEC 61300-3-42

## Outline Drawing



## Material Specifications

**Alignment Sleeve Material** Ceramic

## Mechanical Specifications

**Coupling Retention Force** 70 N | 15.737 lbf

## Optical Specifications

**Fiber Mode** Singlemode

**Insertion Loss, maximum** 0.1 dB

## Environmental Specifications

**Operating Temperature** -40 °C to +70 °C (-40 °F to +158 °F)

## Packaging and Weights

**Packaging quantity** 1

**Packaging Type** Bag

## Regulatory Compliance/Certifications

Agency	Classification
CHINA-ROHS	Below maximum concentration value
REACH-SVHC	Compliant as per SVHC revision on <a href="https://www.commscope.com/ProductCompliance">www.commscope.com/ProductCompliance</a>
ROHS	Compliant

UK-ROHS

Compliant

