

# 2UNPX203.6R2



8-port multibeam antenna, 4x 698–894 and 4x 1710–2170 MHz, 4x 37° HPBW, 4x RET

- Single panel design supporting two separate beams perfectly optimized at horizontal pointing angles of +27 degrees and –27 degrees from boresight

## OBSOLETE

This product was discontinued on: **March 31, 2023**

### Replaced By:

2NN2HH-33B-R4      16-port multibeam antenna, 8x 698–896 MHz, 2x 2-beam 33° HPBW and 8x 1695–2400 MHz, 2x 2-beam 33° HPBW, 4x RET

## General Specifications

<b>Antenna Type</b>	Multibeam
<b>Band</b>	Multiband
<b>Color</b>	Light Gray (RAL 7035)
<b>Grounding Type</b>	RF connector inner conductor and body grounded to reflector and mounting bracket
<b>Performance Note</b>	Outdoor usage
<b>Radome Material</b>	Polyester fiberglass pultrusion
<b>Radiator Material</b>	Aluminum   Low loss circuit board
<b>Reflector Material</b>	Aluminum
<b>RF Connector Interface</b>	7-16 DIN Female
<b>RF Connector Location</b>	Bottom
<b>RF Connector Quantity, high band</b>	4
<b>RF Connector Quantity, low band</b>	4
<b>RF Connector Quantity, total</b>	8

## Remote Electrical Tilt (RET) Information

<b>RET Interface</b>	8-pin DIN Male
<b>RET Interface, quantity</b>	2 male
<b>Input Voltage</b>	10–30 Vdc
<b>Internal RET</b>	High band (2)   Low band (2)

# 2UNPX203.6R2

<b>Power Consumption, idle state, maximum</b>	2 W
<b>Power Consumption, normal conditions, maximum</b>	13 W
<b>Protocol</b>	3GPP/AISG 2.0 (Single RET)

## Dimensions

<b>Width</b>	565 mm   22.244 in
<b>Depth</b>	127 mm   5 in
<b>Length</b>	1746 mm   68.74 in
<b>Net Weight, without mounting kit</b>	37 kg   81.571 lb

## Electrical Specifications

<b>Impedance</b>	50 ohm
<b>Operating Frequency Band</b>	1710 – 2170 MHz   698 – 894 MHz
<b>Polarization</b>	±45°

## Electrical Specifications

<b>Frequency Band, MHz</b>	<b>698–790</b>	<b>790–894</b>	<b>1710–1920</b>	<b>1920–2170</b>
<b>Gain, dBi</b>	13.8	14.5	16.2	17.5
<b>Beam Centers, Horizontal, degrees</b>	±28	±28	±30	±30
<b>Beamwidth, Horizontal, degrees</b>	42.6	36.8	35.1	31.9
<b>Beamwidth, Vertical, degrees</b>	25.1	21.7	12.1	11
<b>Beam Tilt, degrees</b>	1–16	1–16	0–10	0–10
<b>USLS (First Lobe), dB</b>	15	15	15	15
<b>Front-to-Back Ratio at 180°, dB</b>	20	20	30	30
<b>Isolation, Cross Polarization, dB</b>	22	22	20	20
<b>VSWR   Return loss, dB</b>	1.43   15.0	1.43   15.0	1.43   15.0	1.43   15.0
<b>PIM, 3rd Order, 2 x 20 W, dBc</b>	-150	-150	-150	-150
<b>Input Power per Port, maximum, watts</b>	500	500	300	300

## Electrical Specifications, BASTA

<b>Frequency Band, MHz</b>	<b>698–790</b>	<b>790–894</b>	<b>1710–1920</b>	<b>1920–2170</b>
<b>Gain by all Beam Tilts, average, dBi</b>	13.7	14.3	15.7	16
<b>Gain by all Beam Tilts Tolerance, dB</b>	±0.6	±0.9	±0.6	±0.5
<b>Gain by Beam Tilt, average, dBi</b>	1°   13.7 8°   13.8	1°   14.6 8°   14.4	0°   15.7 5°   15.7	0°   16.0 5°   16.0

# 2UNPX203.6R2

	16 °   13.5	16 °   13.7	10 °   15.6	10 °   15.8
<b>Beamwidth, Horizontal Tolerance, degrees</b>	±2	±3.6	±2.5	±3.1
<b>Beamwidth, Vertical Tolerance, degrees</b>	±1.7	±1.6	±0.7	±0.9
<b>USLS, beampeak to 20° above beampeak, dB</b>	18	16	15	15
<b>Front-to-Back Total Power at 180° ± 30°, dB</b>	21	17	31	31

## Mechanical Specifications

<b>Wind Loading @ Velocity, frontal</b>	1,258.0 N @ 150 km/h (282.8 lbf @ 150 km/h)
<b>Wind Loading @ Velocity, lateral</b>	194.0 N @ 150 km/h (43.6 lbf @ 150 km/h)
<b>Wind Loading @ Velocity, rear</b>	1,283.0 N @ 150 km/h (288.4 lbf @ 150 km/h)
<b>Wind Speed, maximum</b>	250 km/h (155 mph)

## Packaging and Weights

<b>Width, packed</b>	625 mm   24.606 in
<b>Depth, packed</b>	270 mm   10.63 in
<b>Length, packed</b>	1940 mm   76.378 in
<b>Weight, gross</b>	43 kg   94.799 lb

## Regulatory Compliance/Certifications

<b>Agency</b>	<b>Classification</b>
CE	Compliant with the relevant CE product directives
CHINA-ROHS	Below maximum concentration value
ISO 9001:2015	Designed, manufactured and/or distributed under this quality management system
REACH-SVHC	Compliant as per SVHC revision on <a href="http://www.commscope.com/ProductCompliance">www.commscope.com/ProductCompliance</a>
ROHS	Compliant
UK-ROHS	Compliant



## Included Products

- T-029-GL-E – Adjustable Tilt Pipe Mounting Kit for 2.362"-4.5" (60-115mm) OD round members for panel antennas. Includes 2 clamp sets.

# 2UNPX203.6R2

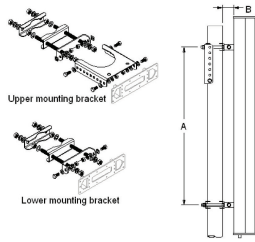
---

\* Footnotes

**Performance Note**

Severe environmental conditions may degrade optimum performance

# T-029-GL-E



Adjustable Tilt Pipe Mounting Kit for 2.362"-4.5" (60-115mm) OD round members for panel antennas. Includes 2 clamp sets.

## Product Classification

**Product Type** Adjustable tilt mounting kit

## General Specifications

**Application** Outdoor

**Color** Silver

## Dimensions

**Compatible Length, maximum** 2850 mm | 112.205 in

**Compatible Length, minimum** 1500 mm | 59.055 in

**Compatible Diameter, maximum** 115 mm | 4.528 in

**Compatible Diameter, minimum** 60 mm | 2.362 in

**Antenna-to-Pipe Distance** 85 mm | 3.346 in

**Bracket-to-Bracket Distance** 1400 mm | 55.118 in

**Weight, net** 6 kg | 13.228 lb

## Material Specifications

**Material Type** Galvanized steel

## Mechanical Specifications

**Mechanical Tilt** 0°-8°

## Packaging and Weights

**Included** Brackets | Hardware

**Packaging quantity** 1

## Regulatory Compliance/Certifications

Agency	Classification
CE	Compliant with the relevant CE product directives

# T-029-GL-E

---

CHINA-ROHS	Below maximum concentration value
ISO 9001:2015	Designed, manufactured and/or distributed under this quality management system
REACH-SVHC	Compliant as per SVHC revision on <a href="http://www.commscope.com/ProductCompliance">www.commscope.com/ProductCompliance</a>
ROHS	Compliant
UK-ROHS	Compliant

