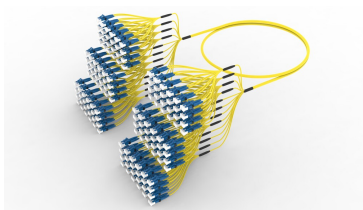


F4WLCLCAM



Singlemode LC/UPC to LC/UPC, InstaPATCH® 360 Ruggedized Fanout Cable, 144-Fiber, LSZH, B2ca

Product Classification

Regional Availability	Europe Middle East/Africa
Portfolio	CommScope®
Product Type	Ruggedized fanout
Product Brand	SYSTIMAX InstaPATCH® 360
Ordering Note	For lengths greater than 999 ft (304 m), orders must be in meters Minimum length may vary based on cable configuration Not available in the United States or Canada

General Specifications

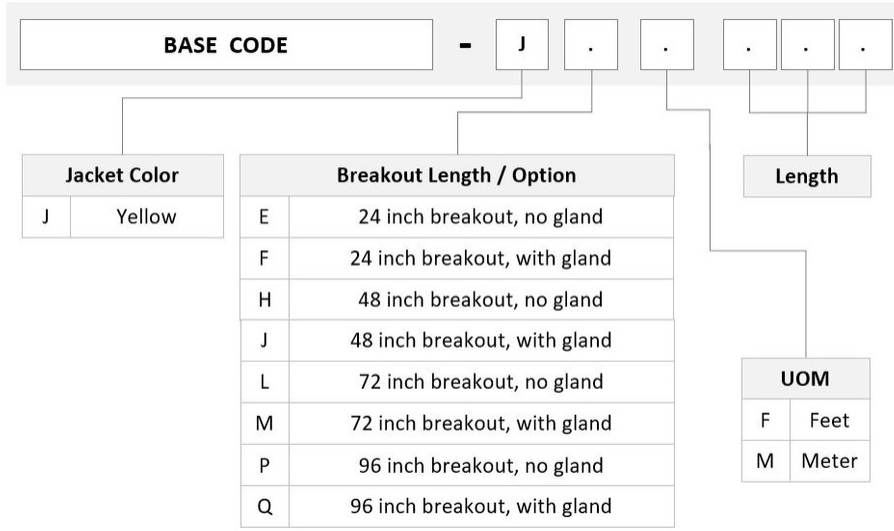
Color, connector A	Blue
Color, connector B	Blue
Construction Type	Stranded
Fibers per Subunit, quantity	12
Furcation Color	Yellow
Interface, Connector A	LC/UPC
Interface, Connector B	LC/UPC
Jacket Color	Yellow
Polarity	Method B
Total Fibers, quantity	144

Dimensions

Cable Assembly Length Range (m)	3 – 305
Cable Assembly Length Range (ft)	7 – 999
Diameter Over Jacket	12.9 mm 0.508 in

Ordering Tree

F4WLCCLAM



Mechanical Specifications

Cable Retention Strength, maximum	11.24 lb @ 0 ° 4.40 lb @ 90 °
--	---------------------------------

Optical Specifications

Fiber Mode	Singlemode
Fiber Type	G.652.D G.657.A1, TeraSPEED®
Insertion Loss, maximum, connector A	0.4 dB
Insertion Loss, maximum, connector B	0.4 dB
Return Loss, minimum, connector A	50 dB
Return Loss, minimum, connector B	50 dB

Environmental Specifications

Operating Temperature	-10 °C to +60 °C (+14 °F to +140 °F)
EN50575 CPR Cable EuroClass Fire Performance	B2ca
Environmental Space	Indoor Low Smoke Zero Halogen (LSZH)

Regulatory Compliance/Certifications

Agency	Classification
CHINA-ROHS	Below maximum concentration value
ISO 9001:2015	Designed, manufactured and/or distributed under this quality management system

F4WLCLCAM

REACH-SVHC

Compliant as per SVHC revision on www.commscope.com/ProductCompliance

ROHS

Compliant



Included Products

760248531	–	Low Smoke Zero Halogen Riser MPO Trunk Cable, 144 fiber multi-unit with 12 fiber 2.0mm subunits
N-144-MP-8G1-F12YL/20T/B2		