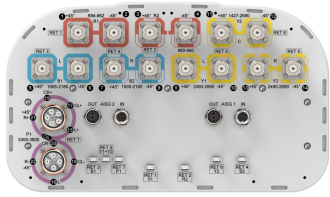


EGZHHTTS4-65B-R7V2



22-port sector antenna, 2x 694-862 (R1), 2x 880-960 (R2), 2x 1427-2690 (Y2), 4x 1695-2180 (B1-B2), 4x 2490-2690 (Y1 & Y3) MHz, 65° 8x 3300-3800 (P1) HPBW, 7X RET. Y1 & Y3 share common RET.

- All Internal RET actuators are connected in “Cascaded SRET” configuration
- Retractable tilt indicator rods
- Two cluster connectors for the S4 beam-forming array, including 2 MQ connectors MQ4/MQ5

General Specifications

Antenna Type	Sector
Band	Multiband
Color	Light Gray (RAL 7035)
Grounding Type	RF connector inner conductor and body grounded to reflector and mounting bracket
Performance Note	Outdoor usage
Radome Material	Fiberglass, UV resistant
Radiator Material	Low loss circuit board
Reflector Material	Aluminum
RF Connector Interface	4.3-10 Female MQ4 MQ5
RF Connector Location	Bottom
RF Connector Quantity, high band	8
RF Connector Quantity, mid band	10
RF Connector Quantity, low band	4
RF Connector Quantity, total	22

Remote Electrical Tilt (RET) Information

RET Hardware	CommRET v2
RET Interface	8-pin DIN Female 8-pin DIN Male
RET Interface, quantity	2 female 2 male
Input Voltage	10-30 Vdc
Internal RET	High band (1) Low band (2) Mid band (4)
Power Consumption, active state, maximum	8 W
Power Consumption, idle state, maximum	1 W

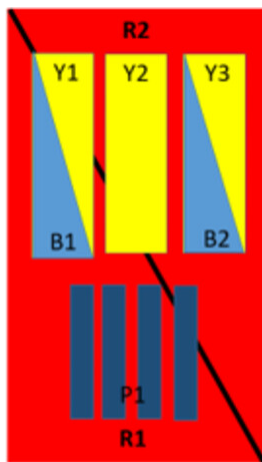
EGZHHTTS4-65B-R7V2

Power Consumption, normal conditions, maximum 8 W
Protocol 3GPP/AISG 2.0 (Single RET)

Dimensions

Width 395 mm | 15.551 in
Depth 228 mm | 8.976 in
Length 2100 mm | 82.677 in
Net Weight, without mounting kit 42.9 kg | 94.578 lb

Array Layout



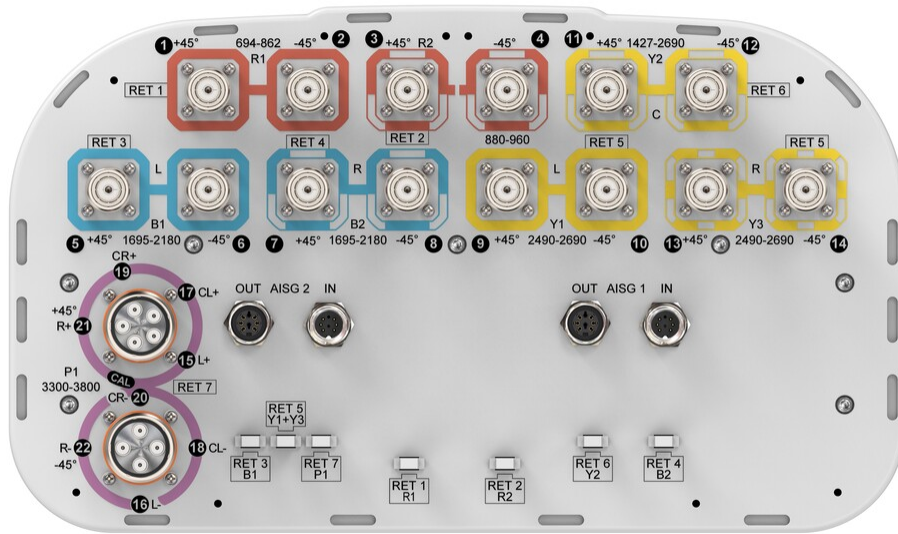
Array	Freq (MHz)	Conns	RET (SRET)	AISG RET UID
R1	694-862	1-2	1	CPxxxxxxxxxxxxxxxxR1
R2	880-960	3-4	2	CPxxxxxxxxxxxxxxxxR2
B1	1695-2180	5-6	3	CPxxxxxxxxxxxxxxxxB1
B2	1695-2180	7-8	4	CPxxxxxxxxxxxxxxxxB2
Y1	2490-2690	9-10	5	CPxxxxxxxxxxxxxxxxY1
Y3	2490-2690	13-14		
Y2	1427-2690	11-12	6	CPxxxxxxxxxxxxxxxxY2
P1	3300-3800	15-22	7	CPxxxxxxxxxxxxxxxxP1

Left Right
Bottom

(Sizes of colored boxes are not true depictions of array sizes)

Port Configuration

EGZHHTTS4-65B-R7V2



Electrical Specifications

Impedance	50 ohm
Operating Frequency Band	1427 – 2690 MHz 1695 – 2180 MHz 2490 – 2690 MHz 3300 – 3800 MHz 694 – 862 MHz 880 – 960 MHz
Polarization	±45°
Total Input Power, maximum	900 W @ 50 °C

Electrical Specifications

Frequency Band, MHz	694–862	880–960	1695–2180	2490–2690	1427–1518	1695–2200	2300–2690	3300–3800
Gain, dBi	14.7	15	16.5	16.7	14.6	16.3	17	15.1
Beamwidth, Horizontal, degrees	65	64	66	60	70	63	56	91
Beamwidth, Vertical, degrees	10.5	8.9	7.1	5.6	9.3	7.5	5.8	7.1
Beam Tilt, degrees	2–12	2–12	2–12	2–12	2–12	2–12	2–12	2–12
USLS (First Lobe), dB	17	22	21	18	19	16	21	15
Front-to-Back Ratio at 180°, dB	35	33	32	30	32	32	34	27
Coupling level, Amp, Antenna port to Cal port, dB								26
Coupling level, max Amp Δ,								±2

EGZHHTTS4-65B-R7V2

Antenna port to Cal port, dB

Coupler, max Amp Δ , Antenna port to Cal port, dB 0.9

Coupler, max Phase Δ , Antenna port to Cal port, degrees 7

Isolation, Cross Polarization, dB 28 28 28 28 28 27 27 25

Isolation, Inter-band, dB 28 28 28 28 28 28 28 19

VSWR | Return loss, dB 1.5|14.0 1.5|14.0 1.5|14.0 1.5|14.0 1.5|14.0 1.5|14.0 1.5|14.0 1.5|14.0

PIM, 3rd Order, 2 x 20 W, dBc -150 -150 -150 -150 -150 -150 -150 -145

Input Power per Port at 50°C, maximum, watts 300 300 250 200 200 250 250 75

Electrical Specifications, BASTA

Frequency Band, MHz	694–862	880–960	1695–2180	2490–2690	1427–1518	1695–2200	2300–2690	3300–3800
Gain by all Beam Tilts, average, dBi	14.5	14.7	16	16.1	14.4	15.4	16.6	14.5
Gain by all Beam Tilts Tolerance, dB	±0.3	±0.4	±0.8	±0.7	±0.4	±1.3	±0.7	±0.6
Beamwidth, Horizontal Tolerance, degrees	±2.5	±1.9	±5.4	±5.8	±4.2	±5.9	±5.9	±14.5
Beamwidth, Vertical Tolerance, degrees	±1.1	±0.5	±0.7	±0.2	±0.5	±1	±0.6	±0.6
USLS, beampeak to 20° above beampeak, dB	17	18	15	14	15	15	16	15
Front-to-Back Total Power at 180° ± 30°, dB	26	24	24	24	26	28	29	21
CPR at Boresight, dB	19	16	17	18	14	22	24	15
CPR at Sector, dB	12	8	7	10	8	8	6	9

Electrical Specifications, Broadcast 65°

Frequency Band, MHz	3300–3800
Gain, dBi	16.2
Beamwidth, Horizontal, degrees	60
Beamwidth, Vertical, degrees	7.1
USLS (First Lobe), dB	16

Electrical Specifications, Service Beam

EGZHHTTS4-65B-R7V2

Frequency Band, MHz	3300–3800
Steered 0° Gain, dBi	19.8
Steered 0° Beamwidth, Horizontal, degrees	25
Steered 0° Front-to-Back Total Power at 180° ± 30°, dB	28
Steered 0° Horizontal Sidelobe, dB	12
Steered 30° Gain, dBi	19.4
Steered 30° Beamwidth, Horizontal, degrees	25
Steered 30° Front-to-Back Total Power at 180° ± 30°, dB	27
Steered 30° Horizontal Sidelobe, dB	10

Electrical Specifications, Soft Split

Frequency Band, MHz	3300–3800
Gain, dBi	19.2
Beamwidth, Horizontal, degrees	29
CPR at Beampeak, dB	17
Front-to-Back Total Power at 180° ± 30°, dB	27
Horizontal Sidelobe, dB	17

Mechanical Specifications

Wind Loading @ Velocity, frontal	427.0 N @ 150 km/h (96.0 lbf @ 150 km/h)
Wind Loading @ Velocity, lateral	312.0 N @ 150 km/h (70.1 lbf @ 150 km/h)
Wind Loading @ Velocity, maximum	730.0 N @ 150 km/h (164.1 lbf @ 150 km/h)
Wind Loading @ Velocity, rear	439.0 N @ 150 km/h (98.7 lbf @ 150 km/h)
Wind Speed, maximum	241 km/h (150 mph)

Packaging and Weights

Width, packed	505 mm 19.882 in
Depth, packed	386 mm 15.197 in
Length, packed	2233 mm 87.913 in
Weight, gross	58.6 kg 129.191 lb

EGZHHTTS4-65B-R7V2

Weight, net

42.9 kg | 94.578 lb

Regulatory Compliance/Certifications

Agency

Classification

CHINA-ROHS

Below maximum concentration value

ISO 9001:2015

Designed, manufactured and/or distributed under this quality management system

REACH-SVHC

Compliant as per SVHC revision on www.commscope.com/ProductCompliance

ROHS

Compliant

UK-ROHS

Compliant/Exempted



Included Products

BSAMNT-4

- Wide Profile Antenna Downtilt Mounting Kit for 2.4 - 4.5 in (60 - 115 mm) OD round members. Kit contains one scissor top bracket set and one bottom bracket set.

* Footnotes

Performance Note

Severe environmental conditions may degrade optimum performance