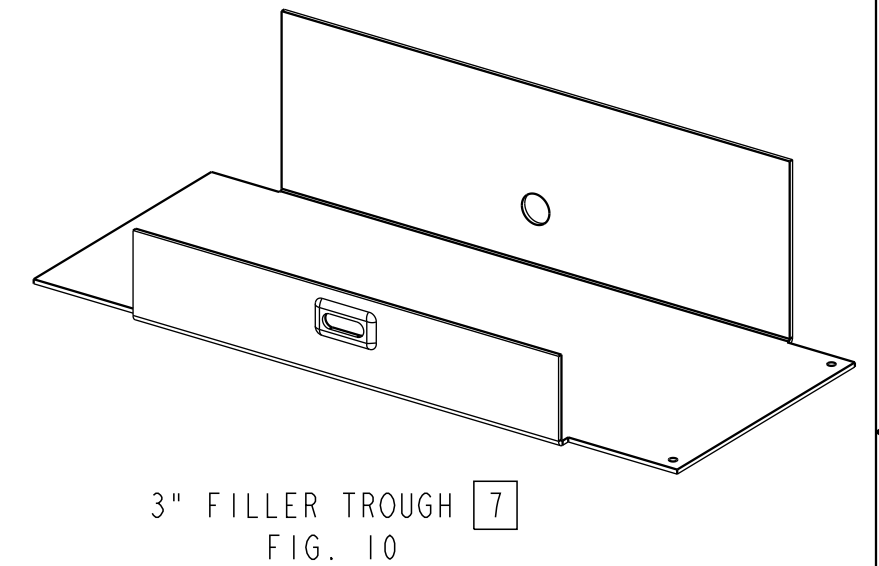
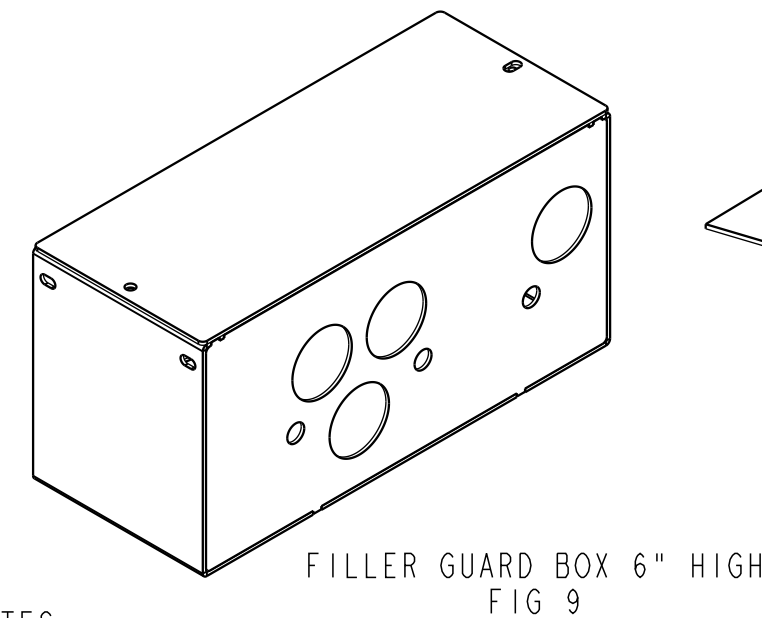
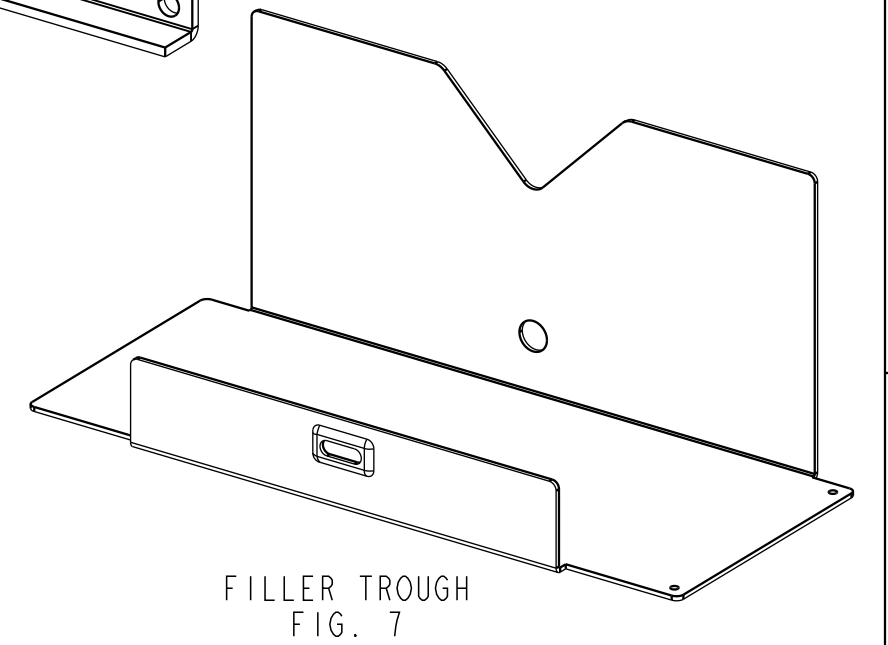
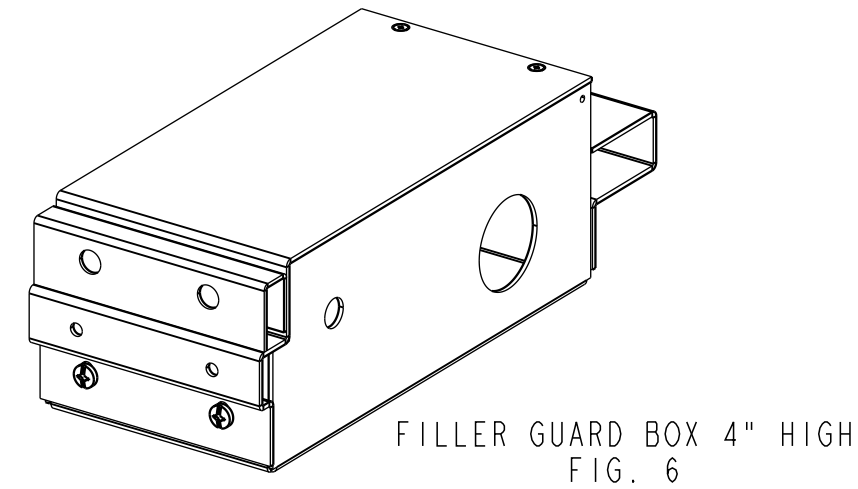
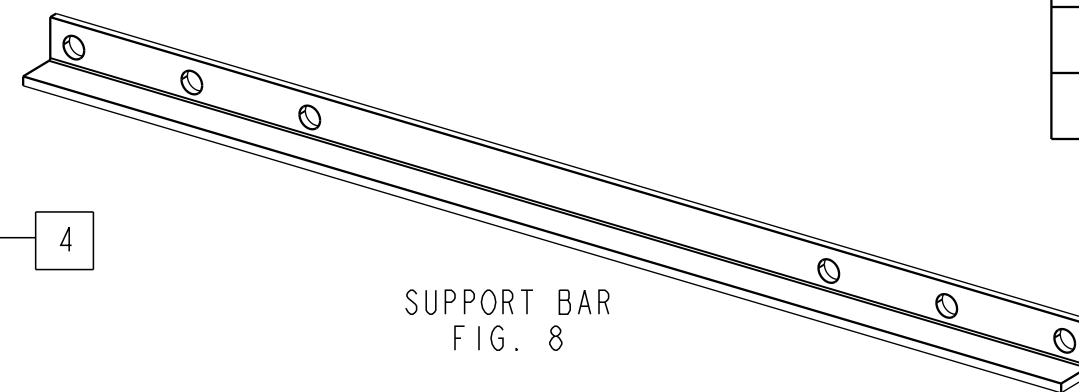
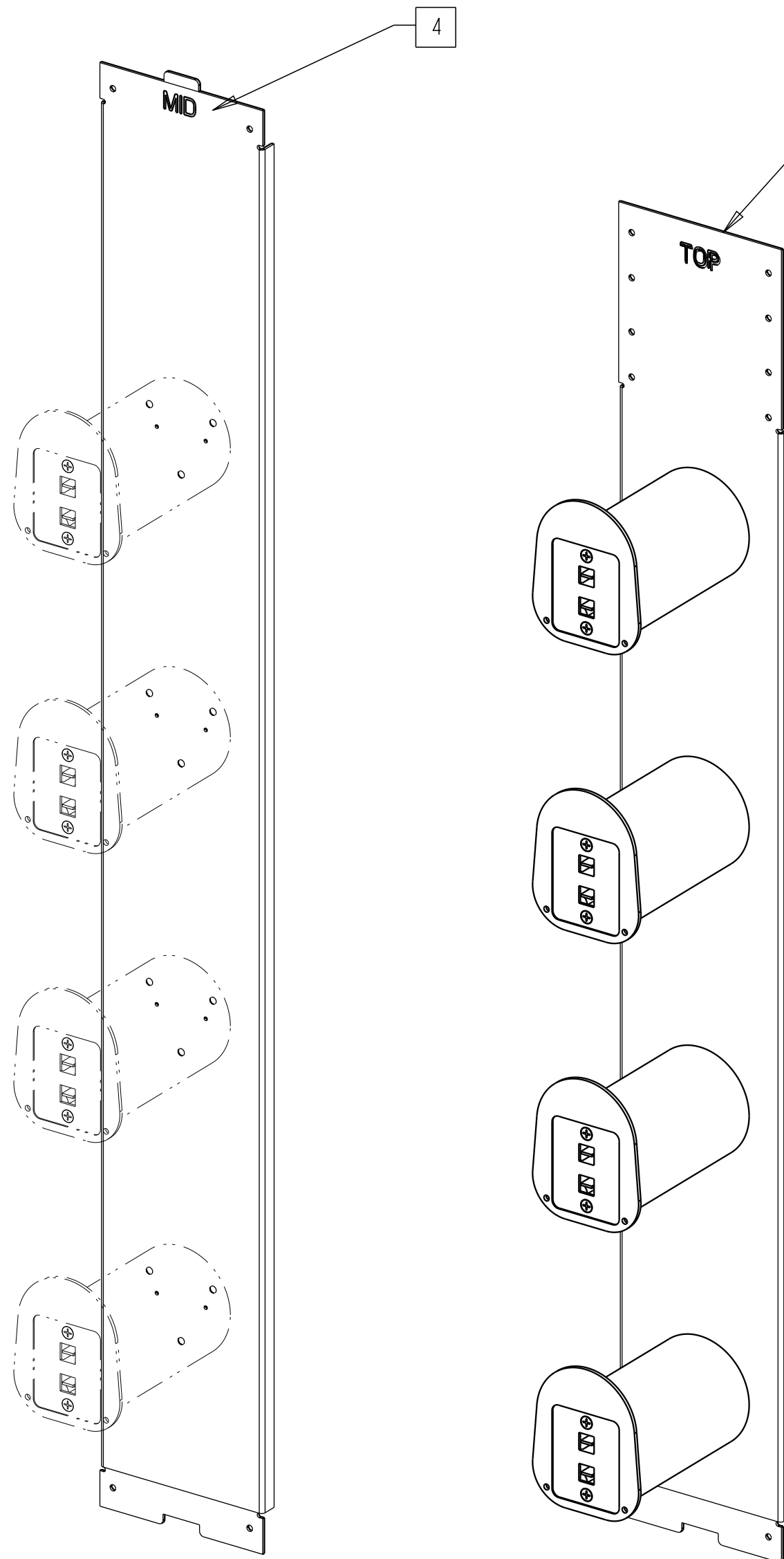
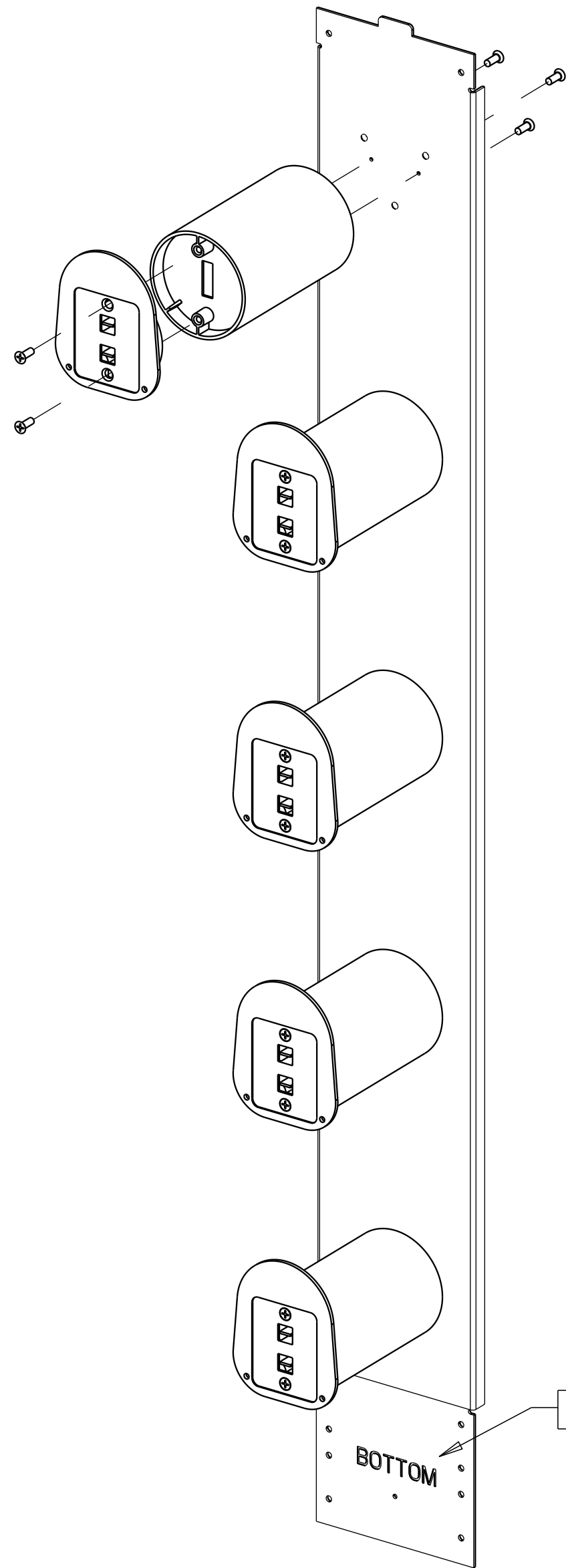
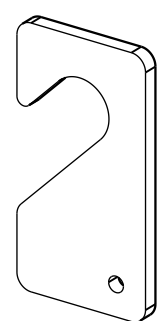


REV.	MCO	DWN	DATE
B	40020399MCO	EAAE	10-MAR-15
C	40033057MCO	RRC	24-AUG-16

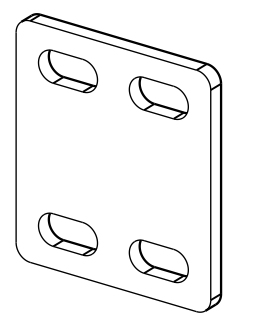


NOTES:

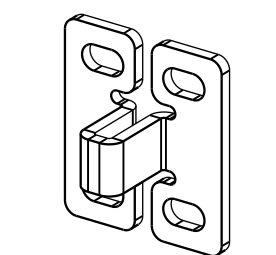
- 1 DIMENSION FROM BOTTOM OF PANEL TO CENTER OF FIRST SPOOL.
- 2 SEE SHEET TWO FOR PARTS LISTS. DESIGNATED SCREWS AND HARDWARE ARE BAGGED AND PLACED INSIDE FILLER GUARD BOX FOR SHIPPING.
- 3 SEE DETAIL A (SHEET 3) FOR IMP MOUNTING DETAIL.
 INSTALL IMP SECTIONS AS FOLLOWS:
 A) FOR IMP < 7'; THERE ARE TWO SECTIONS; INSTALL BOTTOM SECTION FIRST (NOTE "BOTTOM" IS STAMPED ON THE LOWER END OF THE PANEL), THEN INSTALL TOP SECTION (NOTE "TOP" IS STAMPED ON UPPER END OF PANEL).
 B) FOR IMP > 7' AND < 11.5'; THERE ARE THREE SECTIONS; "BOTTOM", "MID" AND "TOP", INSTALL "BOTTOM" FIRST, THEN "MID", THEN "TOP".
 C) FOR IMP > 11.5'; THESE ARE THE FOUR SECTIONS; "BOTTOM", 2-"MID" PANELS, AND "TOP". INSTALL "BOTTOM" FIRST, "MID WITH SPOOLS SECOND", "MID" WITHOUT SPOOLS THIRD, THEN "TOP".
- 4 REF IMP SECTION MARKING: "BOTTOM", "MID", "TOP".
- 5. SEE IMP INSTALLATION GUIDE (ADCP-90-137) FOR FILLER GUARD BOX AND IMP INSTALLATION INSTRUCTIONS.
- 6. SEE CROSS/INTERCONNECT PROCEDURES GUIDE (ADCP-90-140) FOR JUMPER ROUTING INSTRUCTIONS.



SPACER
FIG. 4



JUNCTION PLATE
FIG. 5



SEISMIC
JUNCTION PLATE
FIG. 14
SCALE 0.600

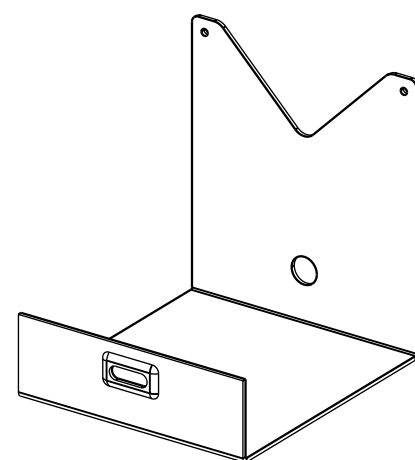


FIG. 13
FILLER TROUGH

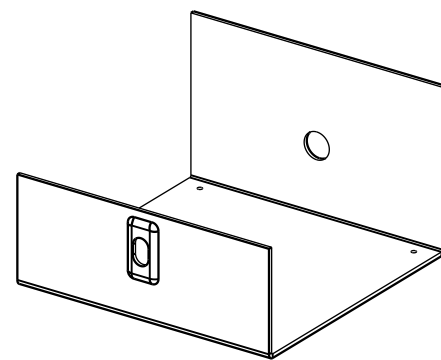
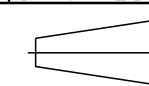
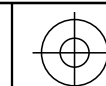


FIG. 11
FILLER TROUGH

COMMSCOPE, INC.

© 2016 COMMSCOPE, INC. CONFIDENTIAL NOTICE: THESE DRAWINGS AND SPECIFICATIONS ARE THE PROPRIETARY PROPERTY OF COMMSCOPE, INC. AND MAY BE USED ONLY FOR THE SPECIFIC PURPOSE AUTHORIZED IN WRITING BY COMMSCOPE, INC.		TITLE KIT IMP INSTALLATION DRAWING	
ALL DIMS AND TOLERANCES ARE INCHES UNLESS OTHERWISE SPECIFIED	.XX:±N/A .XXX:±N/A ANGULAR:±N/A	C SIZE DRAWING NUMBER 1473274_ADC	C REV
DO NOT SCALE DRAWING	ENGR: S. TREBESCH DWN: ED SANSONE	SHT. 1 OF 3	



DIMENSIONS IN INCHES
THIRD ANGLE PROJECTION

A

B

C

D

PARTS LIST

IMP CAT #	RACK HEIGHT	DIM TO FIRST SPOOL 1	TOTAL NUMBER OF SPOOLS	IMP SECTIONS 3														FRAME SPACING (INCHES)		
				BOTTOM FIG 1 QTY/SPOOL QTY	TOP FIG 3 QTY/SPOOL QTY	MID FIG 2 QTY/SPOOL QTY	JUNCTION PLATE 2 FIG 5 QTY	SPACER 2 FIG 4 QTY	ANGLE SUPPORT FIG 8 QTY	FILLER GUARD BOX ASSY	7 FILLER TROUGH	2 .219, .500 FLAT WASHER QTY	2 12-24x.25 SCREWS QTY	2 3/8-16x1.0 BOLT QTY	2 3/8 LOCKWASHER QTY	2 3/8-16 NUT QTY	2 3/8-16x.75 BOLT QTY		2 ANCHOR KIT QTY	2 6-32x.31 SCREW QTY
10 E-501-L139	7'	7.50"	9	1/5	1/4	-	6	1	-	FIG 6	FIG 7	1	24	1	1	1	-	-	1	5.00
E-501-L139-BK	7'	7.50"	9	1/5	1/4	-	6	1	-	FIG 6	FIG 7	1	24	1	1	1	-	-	1	5.00
10 E-501-L142	9'	7.50"	9	1/5	1/0	1/4	8	1	1	FIG 6	-	1	32	1	1	1	4	-	1	5.00
10 E-501-L143	11.5'	7.50"	9	1/5	1/0	1/4 1/0	10	1	1	FIG 6	FIG 7	1	40	1	1	1	4	-	1	5.00
E-501-L201	8'	7.50"	9	1/5	1/0	1/4	8	1	-	FIG 6	FIG 7	1	32	1	1	1	-	-	1	5.00
E-501-L480	7'	7.50"	9	1/5	1/4	-	6	1	-	FIG 6	FIG 10	1	24	1	1	1	-	-	1	5.00
E-501-L201-B	2.6 M	9.75"	11	1/5	1/1	1/5	8	1	-	FIG 6	FIG 10	1	32	1	1	1	-	-	1	5.00
E-501-L457	6'	7.50"	8	1/5	1/3	-	6	1	-	FIG 6	FIG 7	1	24	1	1	1	-	-	1	5.00
E-501-L64	7'	13.50"	8	1/4	1/4	-	6	1	-	FIG 9	-	-	24	1	1	1	-	1	-	5.00
E-501-L139-A	7'	15.50"	8	1/4	1/4	-	6	1	-	FIG 6	FIG 7	1	24	1	1	1	-	-	1	5.00
E-501-L142-A	9'	15.50"	8	1/4	1/0	1/4	8	1	1	FIG 6	FIG 7	1	32	1	1	1	4	-	1	5.00
E-501-L47	11'8"	7.50"	9	1/5	1/0	1/4 1/0	10	1	1	FIG 6	FIG 7	1	40	1	1	1	4	-	1	5.00
FL2-ACC045	2.2 M	7.50"	9	1/5	1/4	-	6	1	-	FIG 6	FIG 7	1	12 9	1	1	1	-	-	1	5.00
10 E-501-L139NF	7'	7.50"	9	1/5	1/4	-	6	1	-	FIG 6	-	1	24	1	1	1	-	-	1	5.00
10 E-501-L142NF	9'	7.50"	9	1/5	1/0	1/4	8	1	1	FIG 6	-	1	32	1	1	1	4	-	1	5.00
10 E-501-L143NF	11.5'	15.50"	9	1/5	1/0	1/4 1/0	10	1	1	FIG 6	-	1	40	1	1	1	4	-	1	5.00

7 THE USE OF 3" FILLER TROUGH REQUIRED ON FRAMES THAT HAVE 6" HIGH TROUGH. (REF FIG. 10)

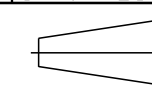
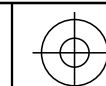
8 USE 6-32 X .31 SCREW AND .219, .500 FLAT WASHER TO SECURE FILLER TROUGH TO IMP PANEL ASSEMBLY.

9 WHEN INSTALLING THE IMP TO A METRIC FRAME, USE M6 SCREWS PROVIDED IN A SEPARATE BAG IN THE HARDWARE KIT.

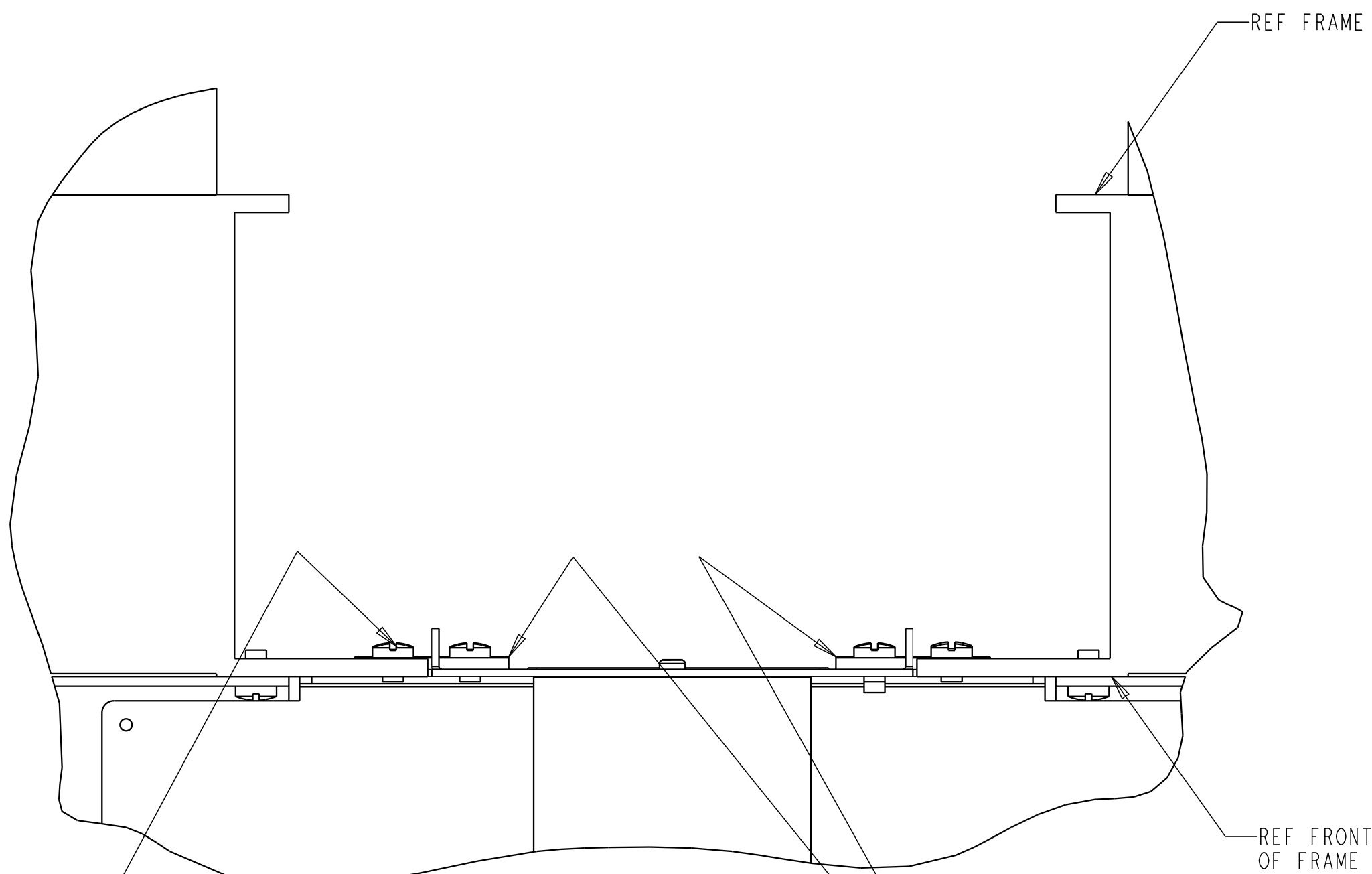
10 INCLUDES SIESMIC RACK JUNCTION PLATES.

COMMSCOPE, INC.

© 2016 COMMSCOPE, INC. CONFIDENTIAL NOTICE: THESE DRAWINGS AND SPECIFICATIONS ARE THE PROPRIETARY PROPERTY OF COMMSCOPE, INC. AND MAY BE USED ONLY FOR THE SPECIFIC PURPOSE AUTHORIZED IN WRITING BY COMMSCOPE, INC.		TITLE KIT IMP INSTALLATION DRAWING	
ALL DIMS AND TOLERANCES .XX:±N/A ARE INCHES UNLESS .XXX:±N/A OTHERWISE SPECIFIED ANGULAR:±N/A	C SIZE	DRAWING NUMBER 1473274_ADC	C REV
DO NOT SCALE DRAWING	ENGR: S. TREBESCH DWN: ED. SANSONE	SHT. 2 OF 3	



DIMENSIONS IN INCHES
THIRD ANGLE PROJECTION



TOP VIEW
SCALE 0.750

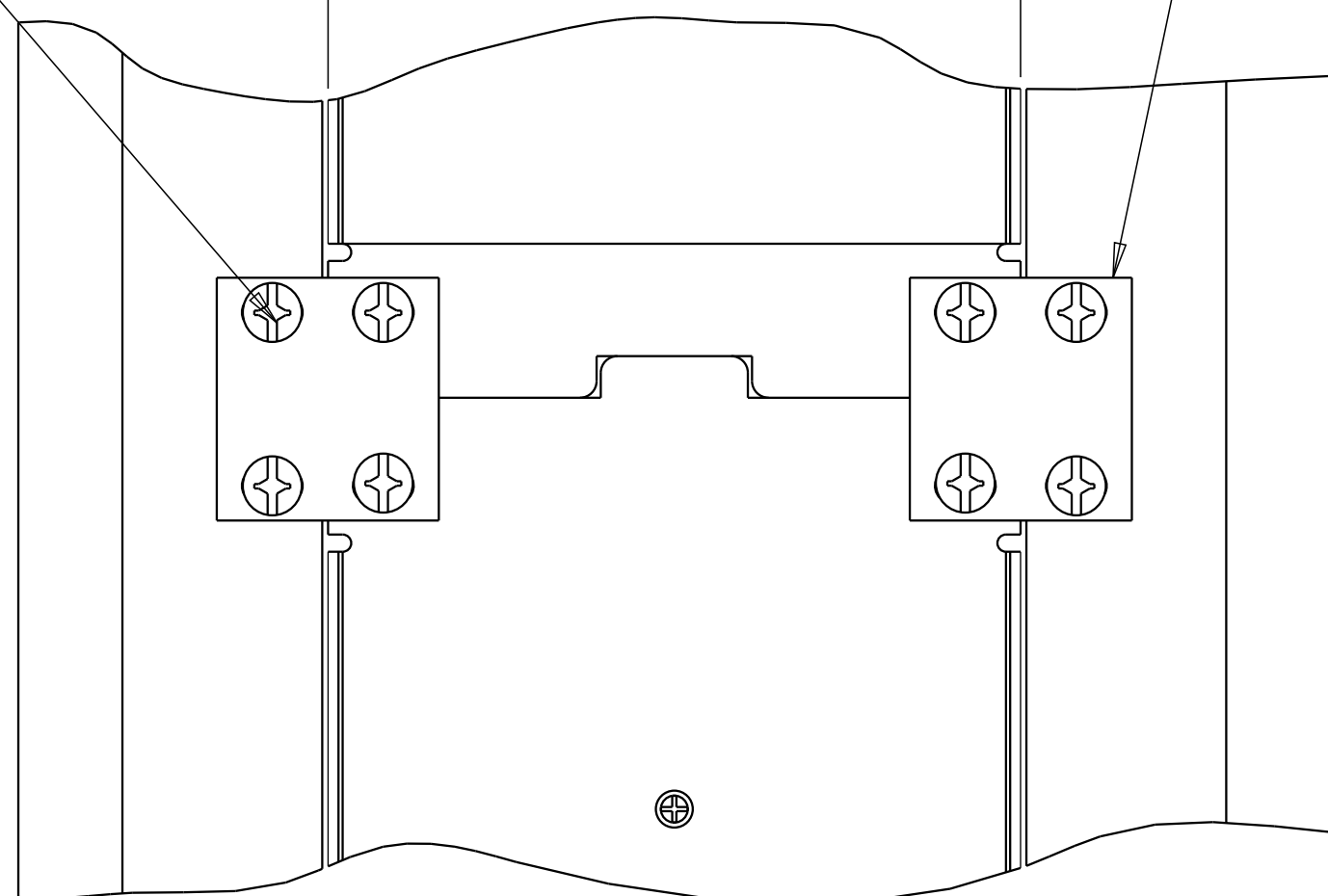
#12-24 UNC X .25 LG
SCREW (4) PER BRACKET

9

REF IMP

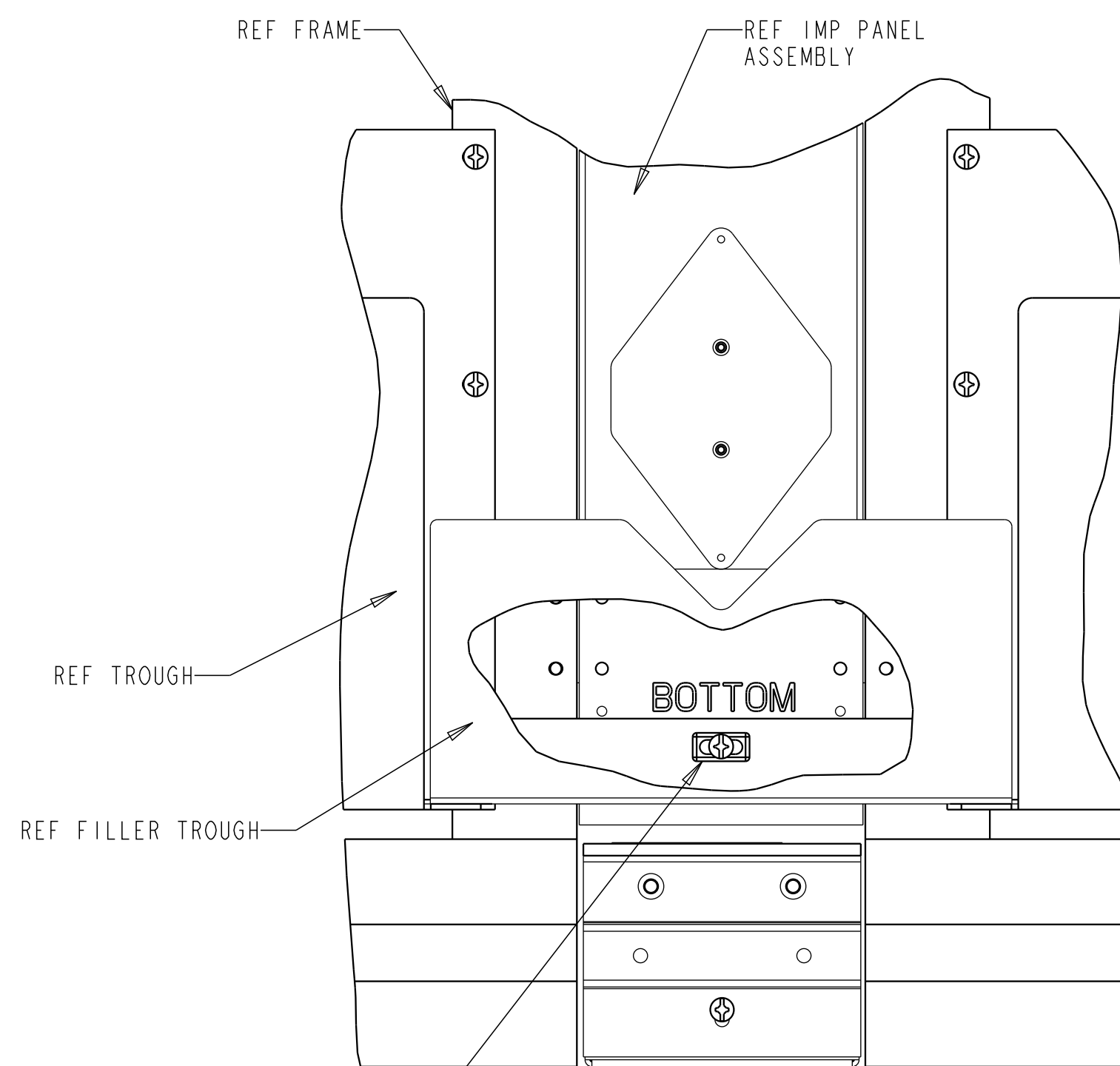
FRAME SPACING

JUNCTION PLATE



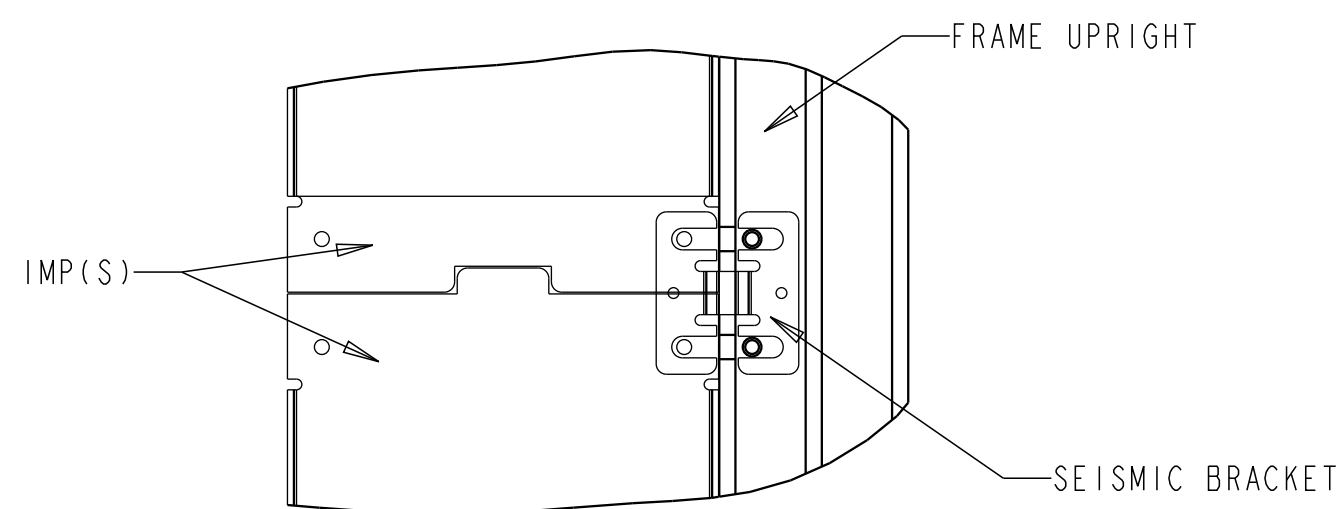
BACK VIEW
SCALE 0.750

DETAIL A
MOUNTING BRACKET
INSTALLATION INSTRUCTIONS



FRONT VIEW

REF FILLER GUARD
BOX ASSEMBLY



SCALE 0.450

BACK VIEW
FRAME AND IMP
REFERENCE FOR SEISMIC MOUNTING BRACKET

© 2016 COMMSCOPE, INC. CONFIDENTIAL
NOTICE: THESE DRAWINGS AND SPECIFICATIONS
ARE THE PROPRIETARY PROPERTY OF
COMMSCOPE, INC. AND MAY BE USED ONLY FOR THE
SPECIFIC PURPOSE AUTHORIZED IN WRITING BY
COMMSCOPE, INC.

TITLE
KIT IMP
INSTALLATION DRAWING

ALL DIMS AND TOLERANCES .XX:±N/A
ARE INCHES UNLESS .XXX:±N/A
OTHERWISE SPECIFIED ANGULAR:±N/A

C SIZE DRAWING NUMBER
C REV 1473274_ADC

DO NOT SCALE DRAWING

ENGR: S. TREBESCH
DWN: ED. SANSONE

SHT. 3 OF 3

COMMSCOPE, INC.



DIMENSIONS IN INCHES
THIRD ANGLE PROJECTION