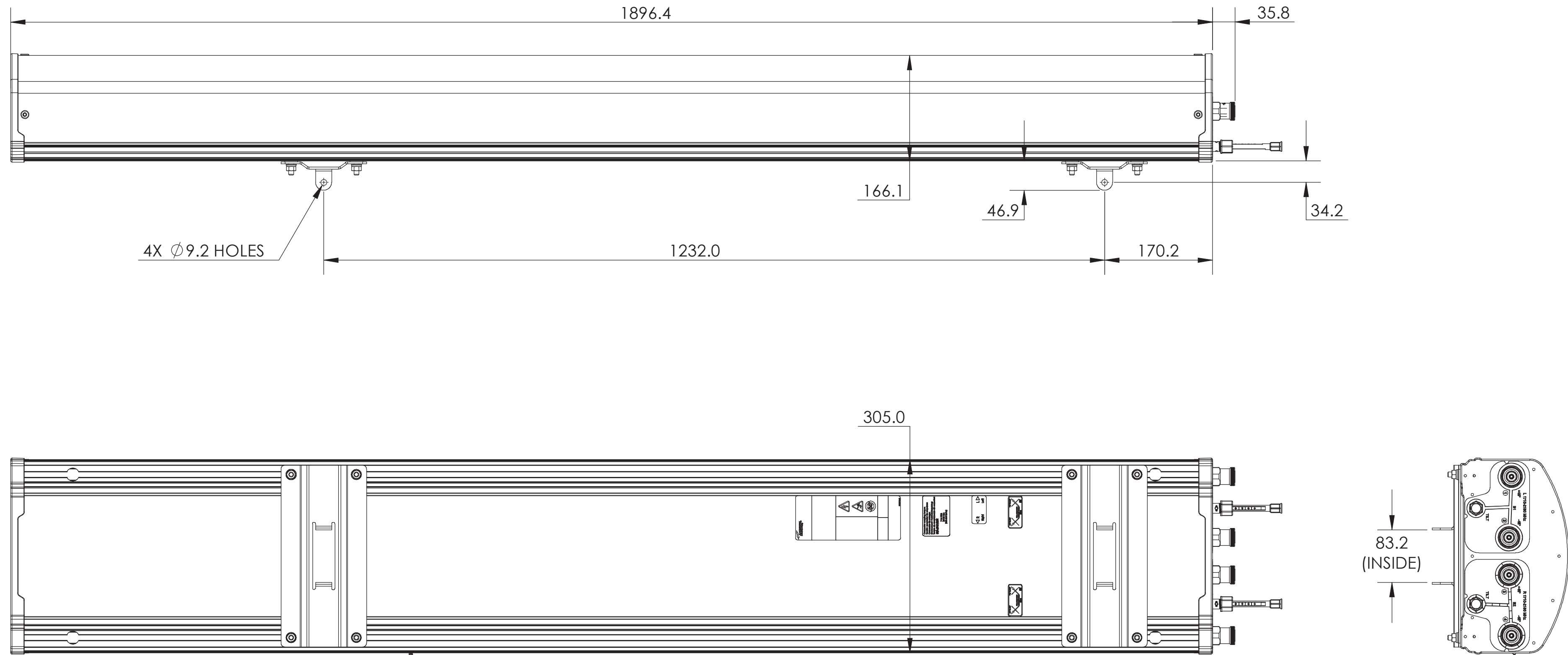


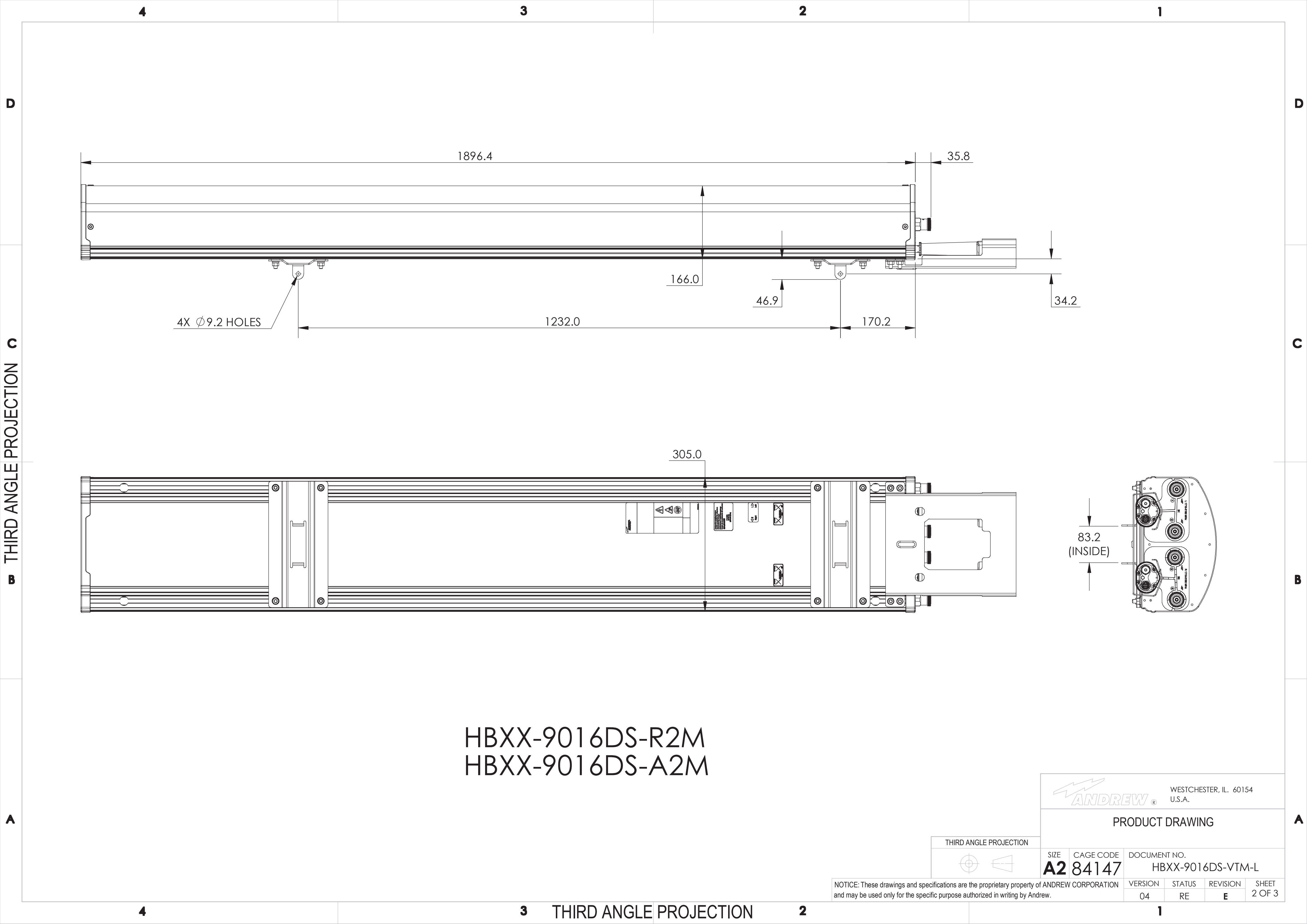
NOTES:

REVISIONS			
REV	DESCRIPTION	DATE	APPROVED
A	ECR 5086403: REL TO PRODUCTION.	30Jun09. LPY	MEIXIA/PLTANG
B	ECR 5102986: UPDATE VIEWS.	11FEB11 HY	S.LIU/GUXU
C	ECR 7006744: UPDATE DRAWING WITH LATEST MODEL.	18DEC12 ZY	S.LIU/GUXU
D	ECR 8000000333: ADD SHEET 3 FOR HBXX-9016DS-A1M.	26MAR13 YMH	S.LIU/GUXU
E	ECR 8000005559: ADD DXF FILE.	24OCT14 HWW	S.LIU/JIHE



HBXX-9016DS-VTM

MATERIAL N/A	DENSITY: MASS:	UNLESS OTHERWISE SPECIFIED DIMENSIONS ARE IN MILLIMETERS INTERPRET PER ISO STANDARDS HANDBOOK TECHNICAL DRAWINGS VOLUMES 1 & 2, THIRD EDITION (2002)	WESTCHESTER, IL. 60154 U.S.A.	
FINISH N/A	TOLERANCES 0 PLACE X ± 1 PLACE .X ± 2 PLACE .XX ± ANGLES ± ALL SURFACES ✓	THIRD ANGLE PROJECTION 	PRODUCT DRAWING	
DRAWN BY LPY 30Jun09		SIZE	CAGE CODE	DOCUMENT NO.
ECN 8000005559-O		A2	84147	HBXX-9016DS-VTM-L
AUTH. GROUP 23		MODEL		DRAWING
NOTICE: These drawings and specifications are the proprietary property of ANDREW CORPORATION and may be used only for the specific purpose authorized in writing by Andrew.		VERSION	STATUS	REVISION
		01	RE	B
		04	RE	E
		SHEET		1 OF 3

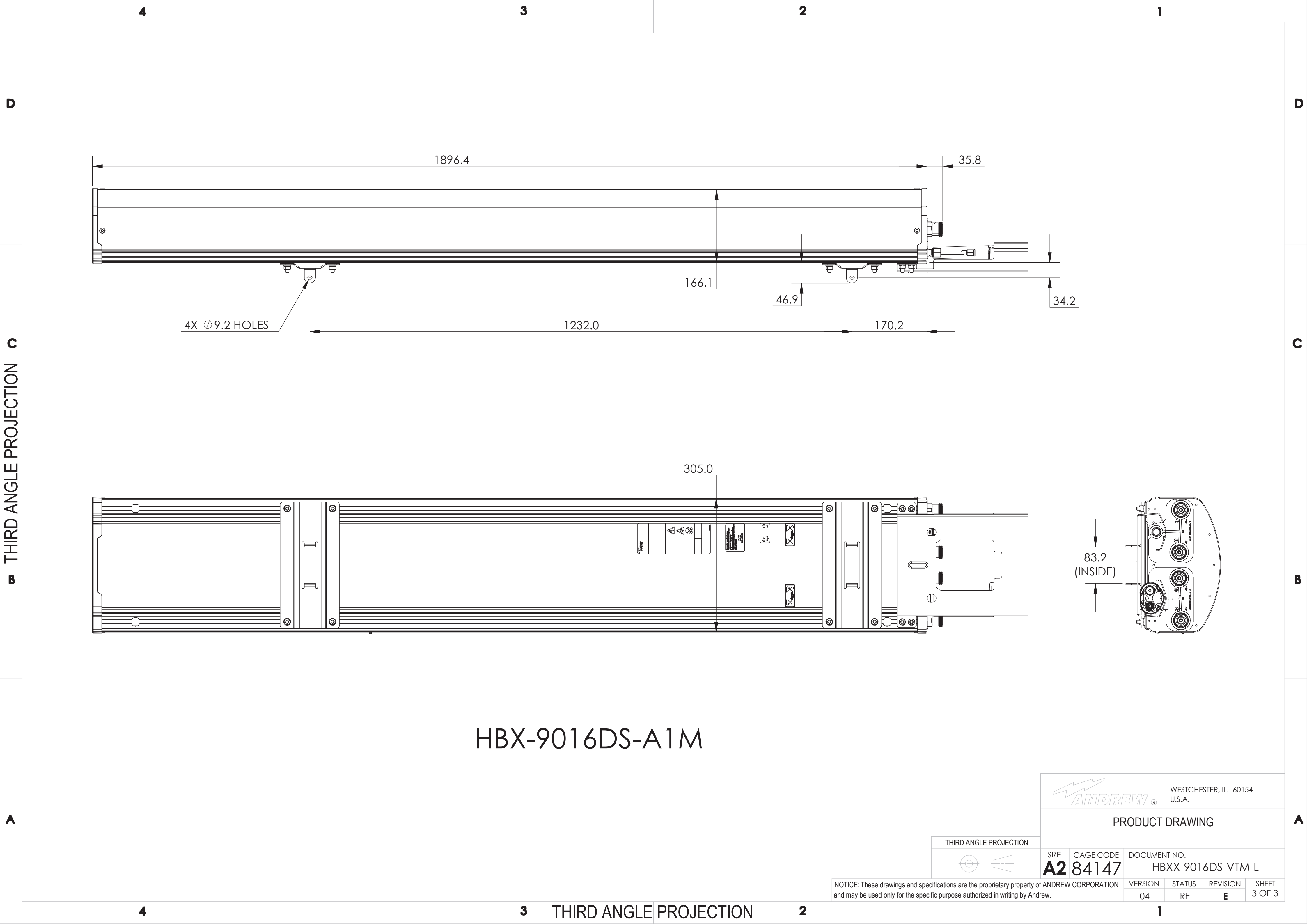


HBXX-9016DS-R2M
 HBXX-9016DS-A2M

ANDREW® WESTCHESTER, IL. 60154
 U.S.A.

PRODUCT DRAWING

THIRD ANGLE PROJECTION	SIZE A2	CAGE CODE 84147	DOCUMENT NO. HBXX-9016DS-VTM-L
NOTICE: These drawings and specifications are the proprietary property of ANDREW CORPORATION and may be used only for the specific purpose authorized in writing by Andrew.		VERSION 04	STATUS RE
		REVISION E	SHEET 2 OF 3



HBX-9016DS-A1M

ANDREW® WESTCHESTER, IL. 60154
U.S.A.

PRODUCT DRAWING

THIRD ANGLE PROJECTION		SIZE	CAGE CODE	DOCUMENT NO.	VERSION	STATUS	REVISION	SHEET
		A2	84147	HBXX-9016DS-VTM-L	04	RE	E	3 OF 3

NOTICE: These drawings and specifications are the proprietary property of ANDREW CORPORATION and may be used only for the specific purpose authorized in writing by Andrew.