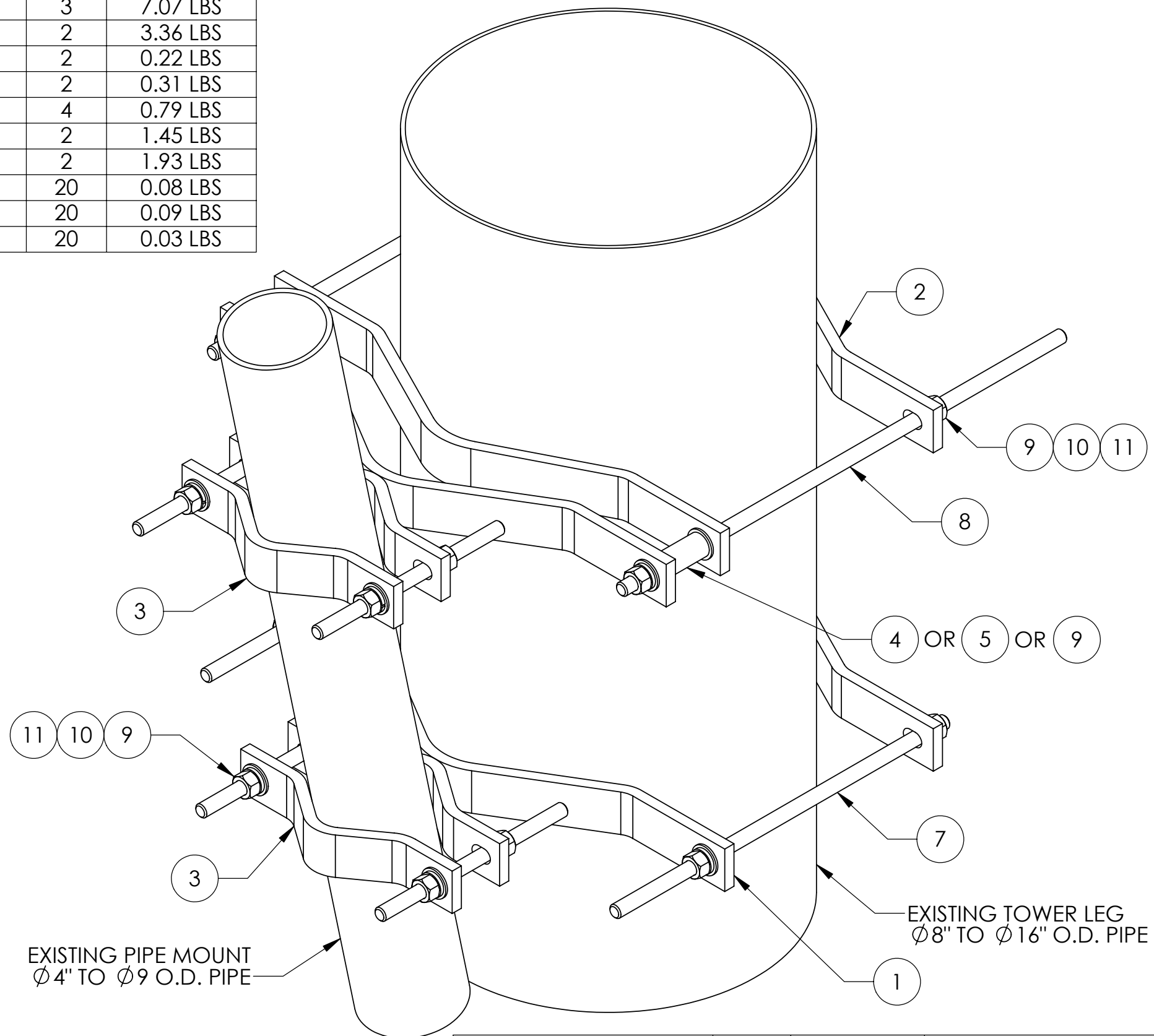


ITEM	PART NO.	DESCRIPTION	QTY.	WEIGHT
1	LMA	MEDIUM TO LARGE PIPE ADAPTER	2	10.57 LBS
2	LCP10	LARGE CLAMP HALF	3	7.07 LBS
3	MCP10	MEDIUM CLAMP HALF	2	3.36 LBS
4	OS234	3/4" X 2-1/4" OFFSET SLEEVE	2	0.22 LBS
5	OS334	3/4" X 3-1/4" OFFSET SLEEVE	2	0.31 LBS
6	MT-381-10	5/8" X 10" THREADED ROD	4	0.79 LBS
7	MT-382-18	5/8" X 18" THREADED ROD	2	1.45 LBS
8	MT-382-24	5/8" X 24" THREADED ROD	2	1.93 LBS
9	GN05A	5/8" GALV HEX NUT (A325)	20	0.08 LBS
10	GWL-05	5/8" GALV LOCK WASHER	20	0.09 LBS
11	GWF05A	5/8" GALV FLAT WASHER (A325)	20	0.03 LBS


REVISIONS				
REV.	ZONE	DESCRIPTION	BY	DATE
A		INITIAL RELEASE	JTS	04/06/01



EXISTING PIPE MOUNT  
ø4" TO ø9 O.D. PIPE

EXISTING TOWER LEG  
ø8" TO ø16" O.D. PIPE

**NOTE:**  
 1. INCLUDED SLEEVES (ITEMS 4 & 5) & NUT (ITEM 9)  
 TO BE INSERTED IF REQUIRED FOR TOWER TAPER.  
 2. OFFSET SLEEVES MAY BE CUT FOR DIFFERENT TAPER.

<small>These drawings and specifications are the proprietary property of ANDREW CORPORATION and may be used only for the specific purpose authorized in writing by Andrew Corporation.</small> ALL DIMENSIONS ARE IN INCHES U.O.S. TOLERANCES UNLESS OTHERWISE SPECIFIED: .X = ± .06      ANGLES      ±2° .XX = ± .03      FRACTIONS      ±1/32 .XXX = ± .010 REMOVE BURRS AND BREAK EDGES .005 DO NOT SCALE THIS PRINT	DRAWN BY: ACG CHECKED BY: TP DATE: 02/20/06 REVISION: A	SHEET: 1 of 1 SCALE: NTS MATERIAL: A36 FINISH: GALV A123 WEIGHT: 30.05 LBS	PART NUMBER: LM-100-SSH DESCRIPTION: TAPERED PIPE ADAPTER CLAMP SET DRAWING TYPE: ASSEMBLY DRAWING  ORLAND PARK, IL. 60462 U.S.A.
--	--	--	---