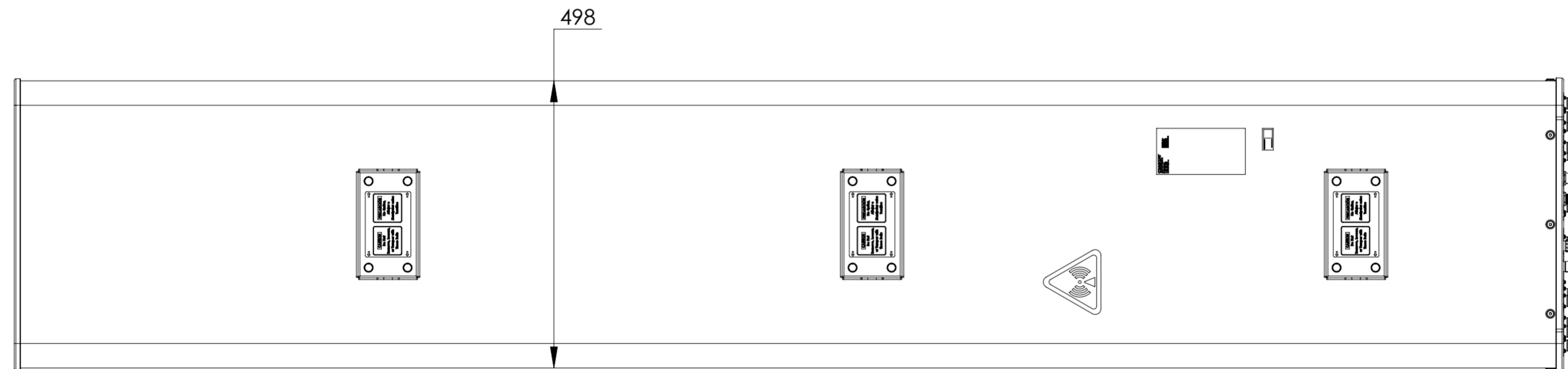
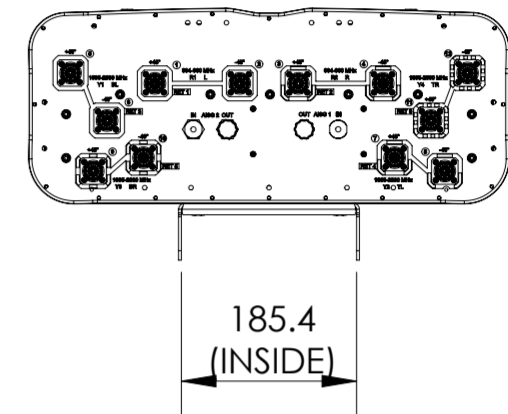
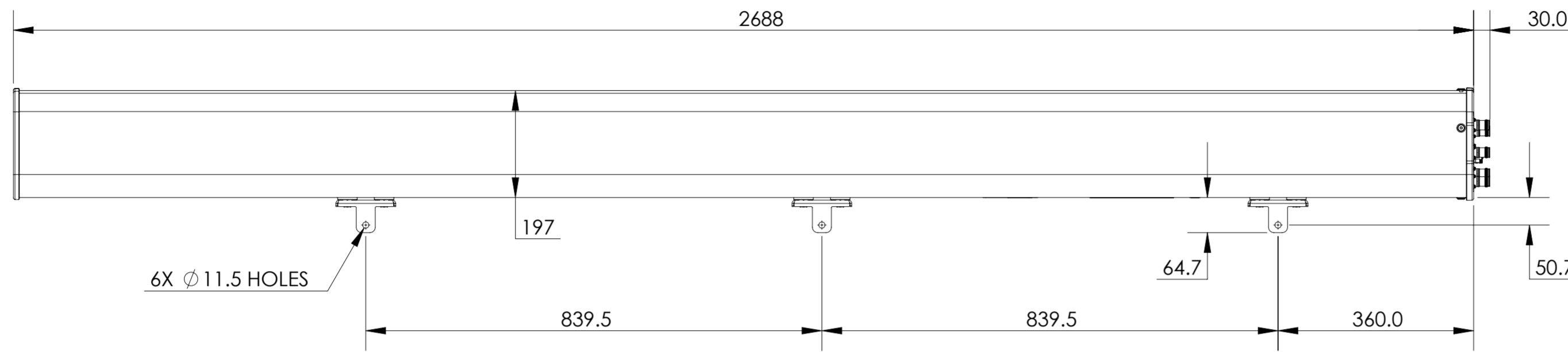


REVISIONS			
REV.	DESCRIPTION	DATE	APPROVED
A	ECR 8000016278: RELEASE TO PRODUCTION PER EAO 603635.	13MAR17 XHX	AP/OI
B	ECR 8000016278: UPDATE DRAWING WITH LATEST MODEL.	23SEP17 XHX	AP/OI
C	ECR 8000029195: UPDATE DRAWING WITH LATEST MODEL.	08APR18 RY	S.LIU/JIHE
D	ECR 8000038365: UPDATE DRAWING WITH LATEST MODEL.	27NOV19 DXJ	THD/RLX



RRV4-65D-R6

COMMSCOPE, INC. OF NORTH CAROLINA

TOLERANCES: 0 PLACE X ±, 1 PLACE .X ±, 2 PLACE .XX ±, ANGLES ±

SAP MATERIAL MASTER

FINISH: MATERIAL

NAME	DATE	TITLE
CE HX1004	13MAR17	PRODUCT DRAWING
RW XD1008	11/26/2019	
RV HDTANG	11/27/2019	
AD LR1057	11/28/2019	
RE BYUAN	11/28/2019	

SCALE: 1:8 DOCUMENT NO. RRV4-65D-R6-L

ECN 8000038365-O

SIZE	WORK AREA	23	MODEL	DRAWING			SHEET		
A2			VERSION	STATUS	REVISION	VERSION	STATUS	REVISION	1 OF 1
			10	RE	K	03	RE	D	

DENSITY	g/mm ³
MASS	grams
VOLUME	mm ³
SURFACE AREA	mm ²
HEIGHT	
LENGTH	
WIDTH	