

8

7

6

5

4

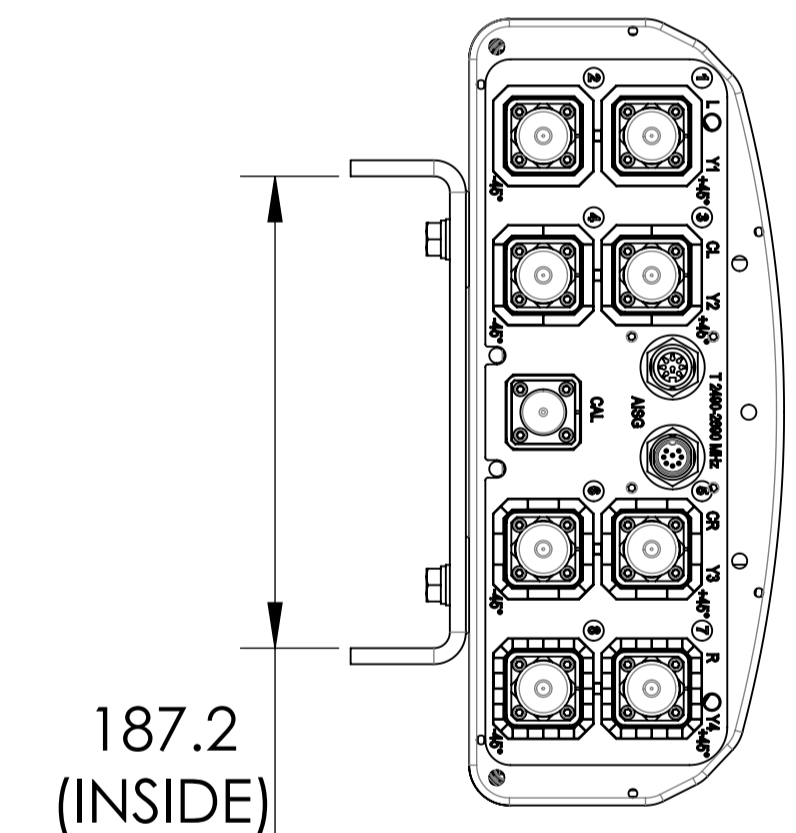
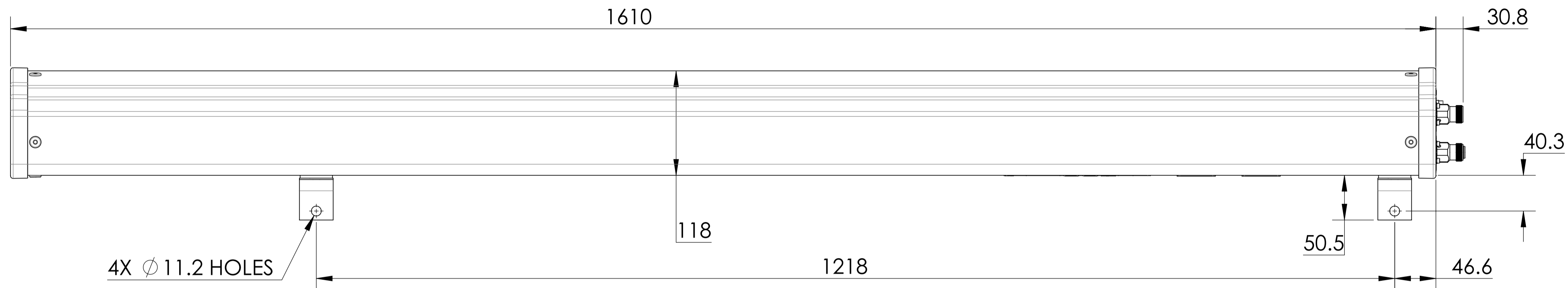
3

2

1

NOTES:

REVISIONS			
REV	DESCRIPTION	DATE	APPROVED
A	ECR 8000001853: REL TO PRODUCTION PER EAO 601287.	19DEC13 AD	DM.WANG/WU.BO
B	ECR 8000003274: ADD TTTT90AP-1XR.AL.	06MAY14 QF	S.LIU/JIHE
C	ECR 8000023065: UPDATE DRAWING .	18MAY17 LXL	S.LIU/JIHE
D	ECR 8000026241: CHG WIDTH OF -1XR AND -1XR.AL.	28SEP17 HWN	S.LIU/JIHE
E	ECR 8000027737: UPDATE DRAWING WITH LATEST MODEL.	29DEC17 QF	S.LIU/JIHE



TTTT90AP-1XR

THIRD ANGLE PROJECTION

MATERIAL	DENSITY:	UNLESS OTHERWISE SPECIFIED DIMENSIONS ARE IN MILLIMETERS INTERPRET PER ISO STANDARDS HANDBOOK, TECHNICAL DRAWINGS, VOLUMES 1 & 2, THIRD EDITION (2002)	WESTCHESTER, IL. 60154 U.S.A.						
	MASS:		ANDREW						
FINISH	TOLERANCES		THIRD ANGLE PROJECTION						
	0 PLACE	X ± 3	DRAWN BY AD 19DEC13 ECN 8000027737-O AUTH. GROUP 23	SIZE A1 CAGE CODE 84147 DOCUMENT NO. TTTT90AP-1XR-L					
	1 PLACE	X ± 1.0							
	2 PLACE	.XX ± 0.20							
ANGLES	± 0.5								
ALL SURFACES		✓	MODEL	DRAWING					
NOTICE: These drawings and specifications are the proprietary property of ANDREW CORPORATION and may be used only for the specific purpose authorized in writing by Andrew.			VERSION 04	STATUS RE	REVISION E	VERSION 05	STATUS RE	REVISION E	SHEET 1 OF 2

8

7

6

THIRD ANGLE PROJECTION

3

2

1

8

7

6

5

4

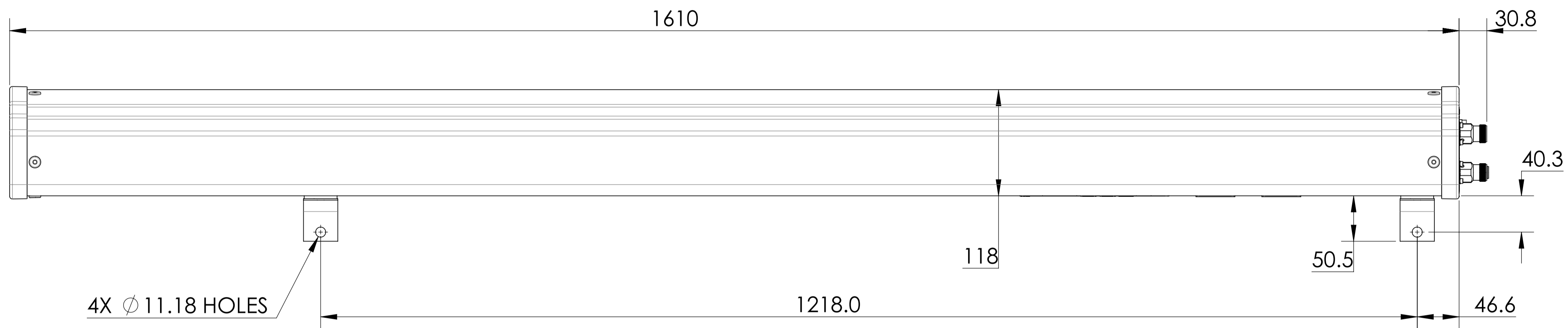
3

2

1

D

D

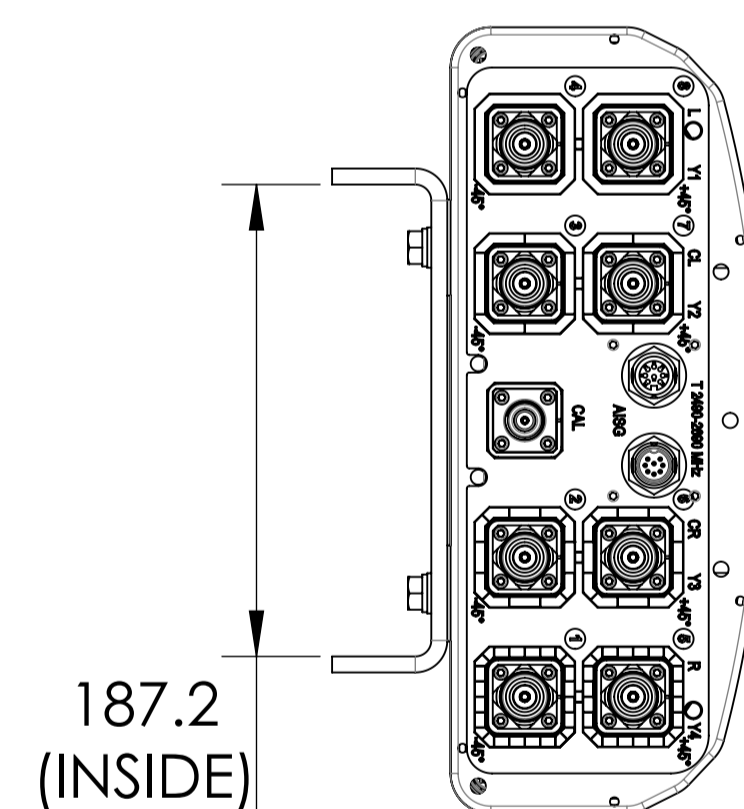


C

THIRD ANGLE PROJECTION



B



A

TTTT90AP-1XR.AL

A

ANDREW WESTCHESTER, IL. 60154
U.S.A.

PRODUCT DRAWING

THIRD ANGLE PROJECTION



SIZE **A1** CAGE CODE **84147**

DOCUMENT NO. **TTTT90AP-1XR-L**

NOTICE: These drawings and specifications are the proprietary property of ANDREW CORPORATION and may be used only for the specific purpose authorized in writing by Andrew.

VERSION	STATUS	REVISION	SHEET
05	RE	E	2 OF 2

8

7

6

THIRD ANGLE PROJECTION

3

2

1