

TC-1302-IP
 Rev A, Apr 2017
 www.commscope.com

Splice/Patch: 250µm with overtubing and patch cords
 Patch/Patch: Pigtail to pigtail

Contents	1	Routing 250µm with overtubing on BOTTOM TRAY
	2	Routing 250µm with overtubing on TOP TRAY
	3	Routing patch cords on BOTTOM TRAY (right side)
	4	Routing patch cords on TOP TRAY (right side)
	5	Routing patch-patch on BOTTOM TRAY (left side)
	6	Routing patch-patch on TOP TRAY (left side)

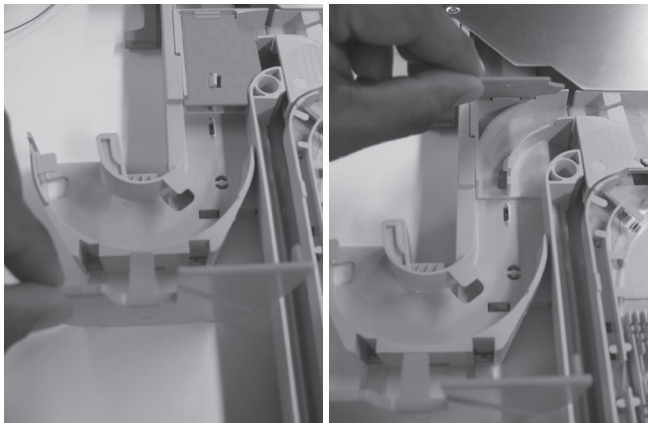
1 Routing 250µm with overtubing on BOTTOM TRAY



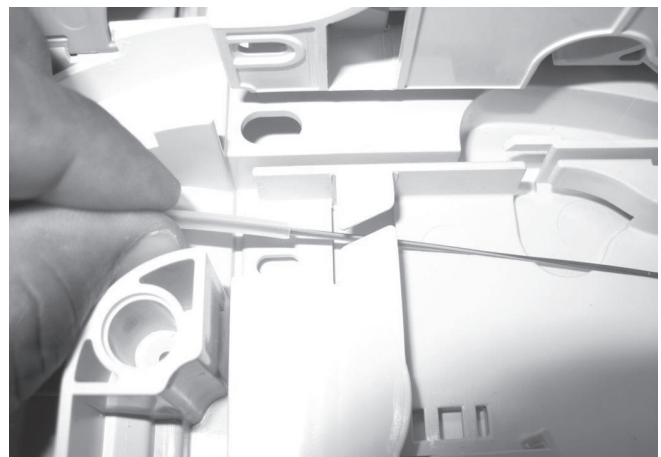
1.1 Remove plastic cover on splice island.



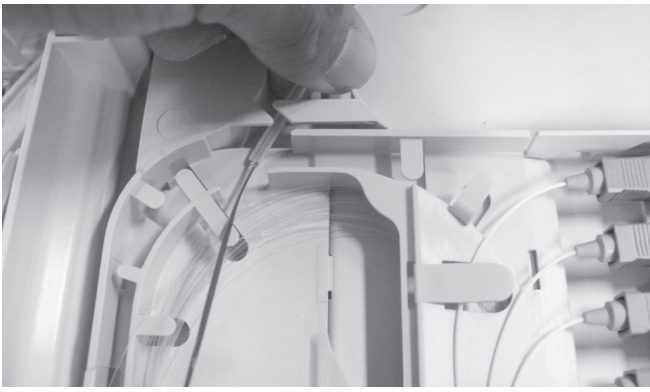
1.3 Guide overtubing into bend control. (Refer to cable attachment guide)



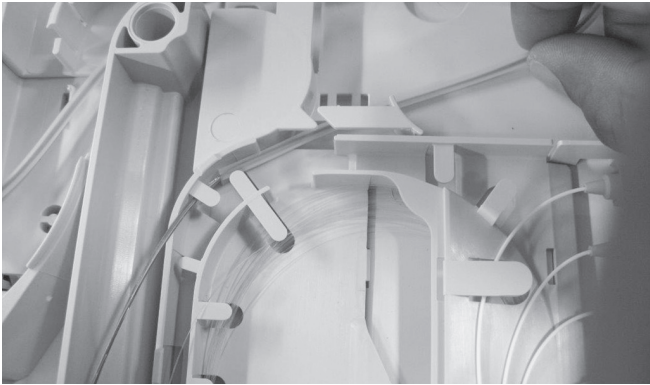
1.2 Open bend control cover and FACT back lid.



1.4 Guide tubing through channel of the defined tray.



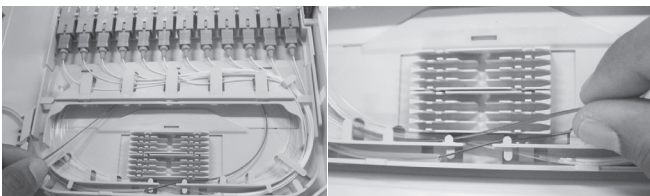
1.5 Position the tube in the channel onto the splice island.



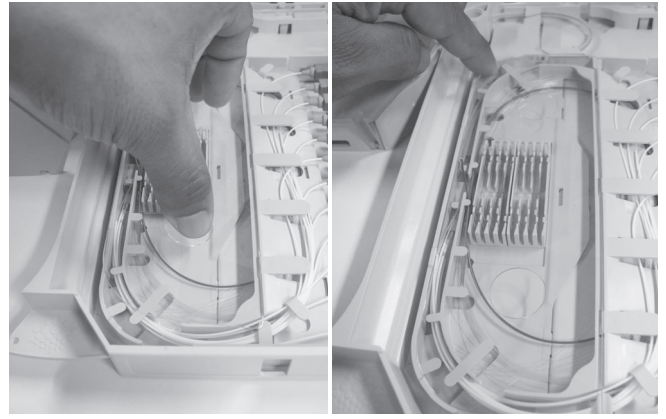
1.6 Carefully push the overtube through the channel.



1.7 Stop the overtube at the position (straight area) shown in the picture and guide fibers through the channel into the splicing area.



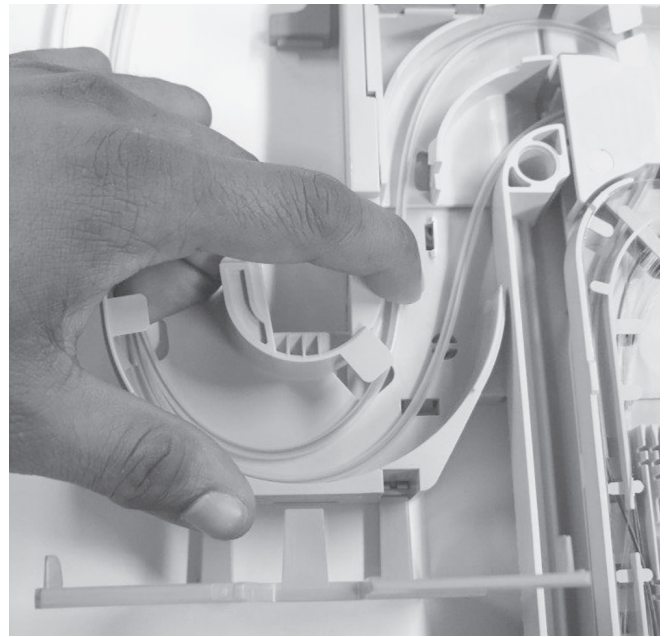
1.8 Route fibers into the splicing tray as shown and check all fibers are routed under the containment lips.



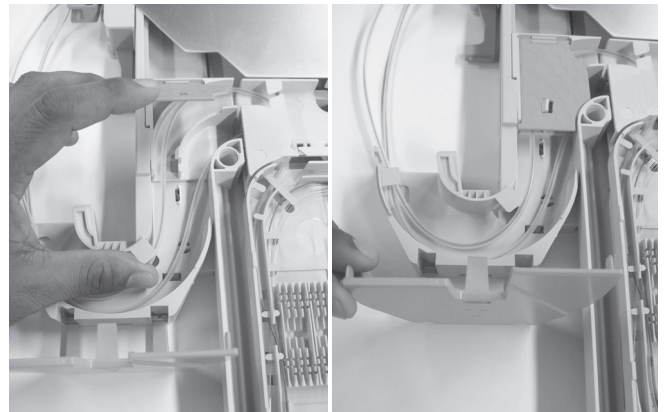
1.9 Close plastic cover and push until you hear a "click".

2 Routing 250µm with overtube on TOP TRAY

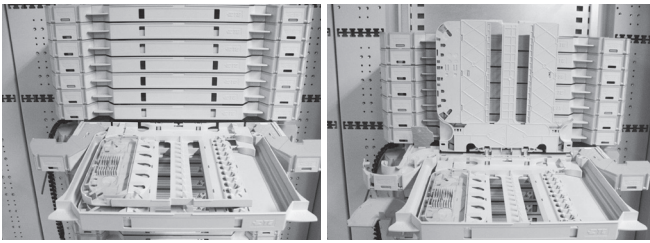
2.1 Repeat everything from point 1.3-1.9



2.2 Guide both overtubes correctly into the bend controls as shown.

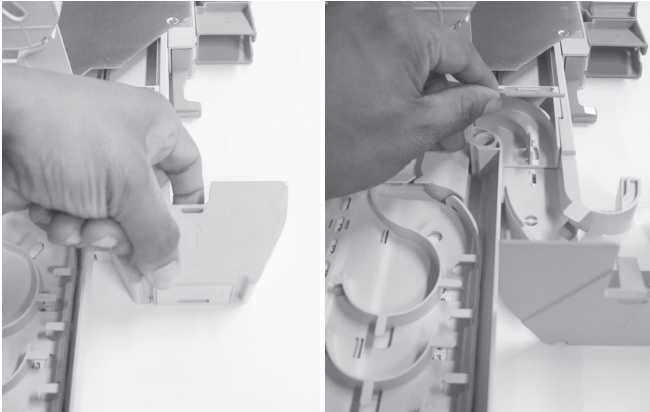


2.3 Carefully close FACT back lid and bend control cover.

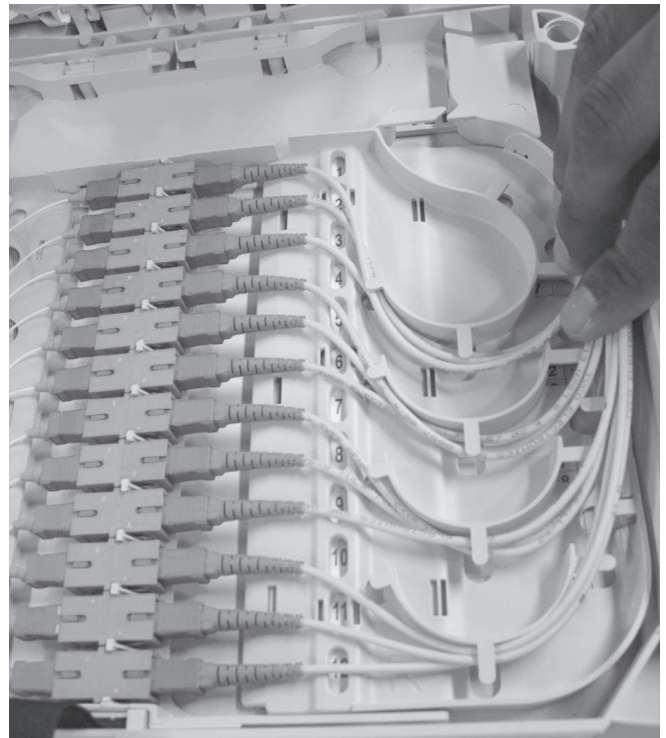


2.4 Open drawer, top tray and covers.

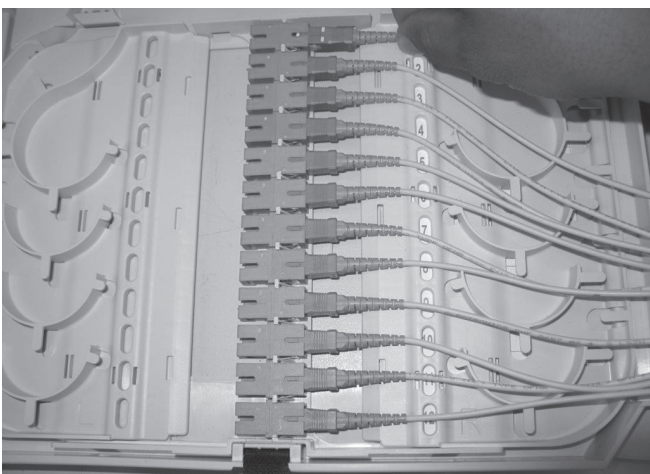
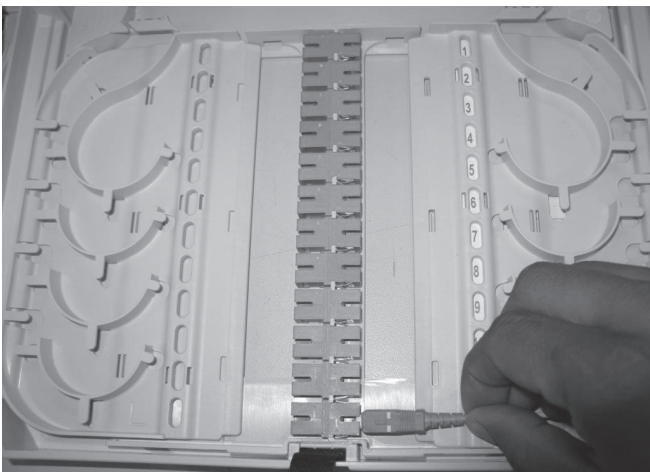
3 Routing patch cords on BOTTOM TRAY (Right Side)



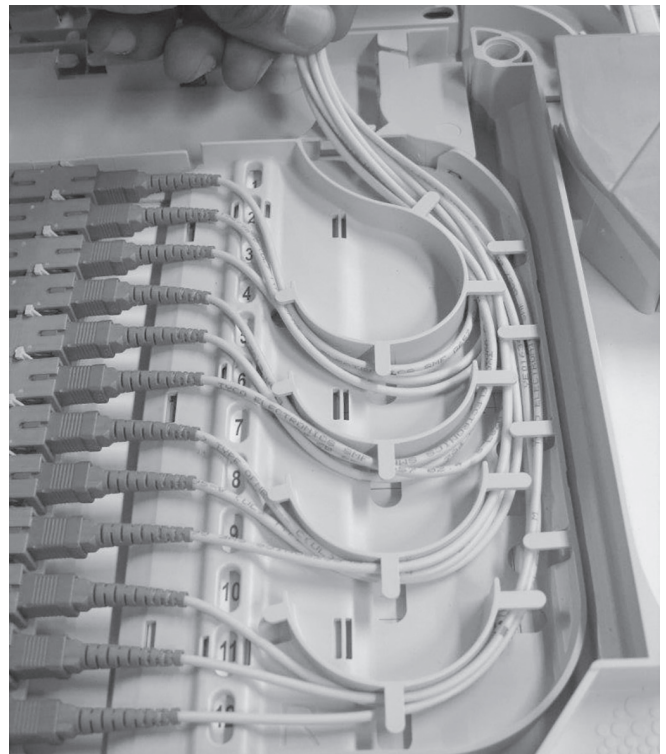
3.1 Open bend control cover and FACT back lid.



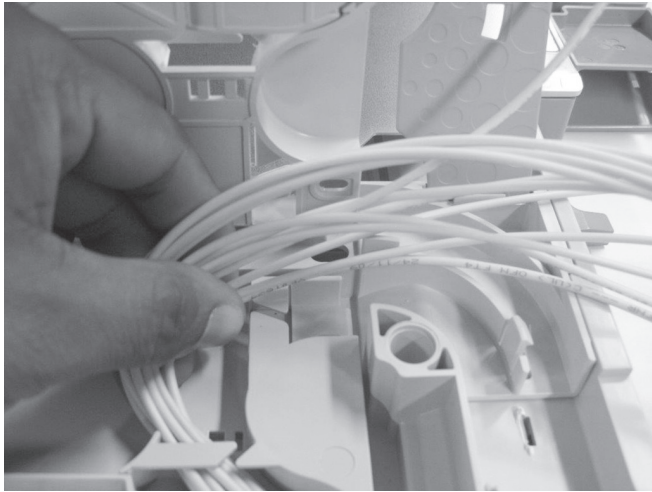
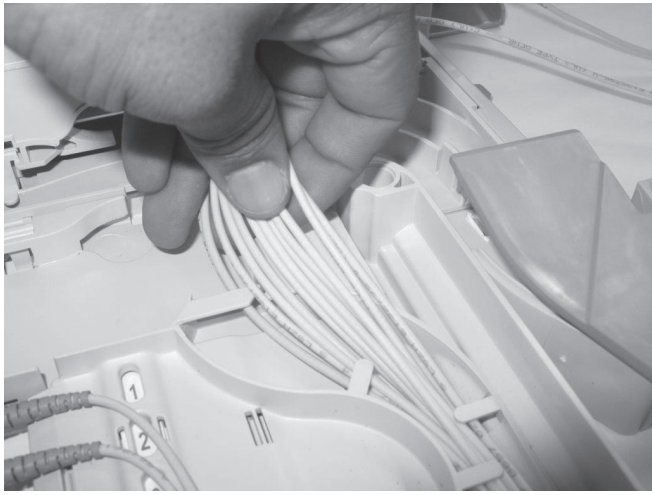
3.3 Guide 3 patch cords on each bend control as shown in the picture (SC connector type). For LC connector types, guide 6 patch cords on each bend control (not shown in picture).



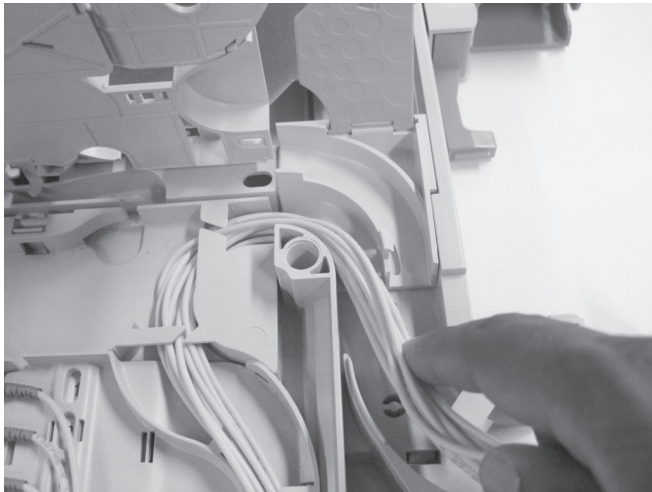
3.2 Install connector on bottom (position 12) and go to the top (position 1).



3.4 Correctly guide patch cords through channel on patch island.



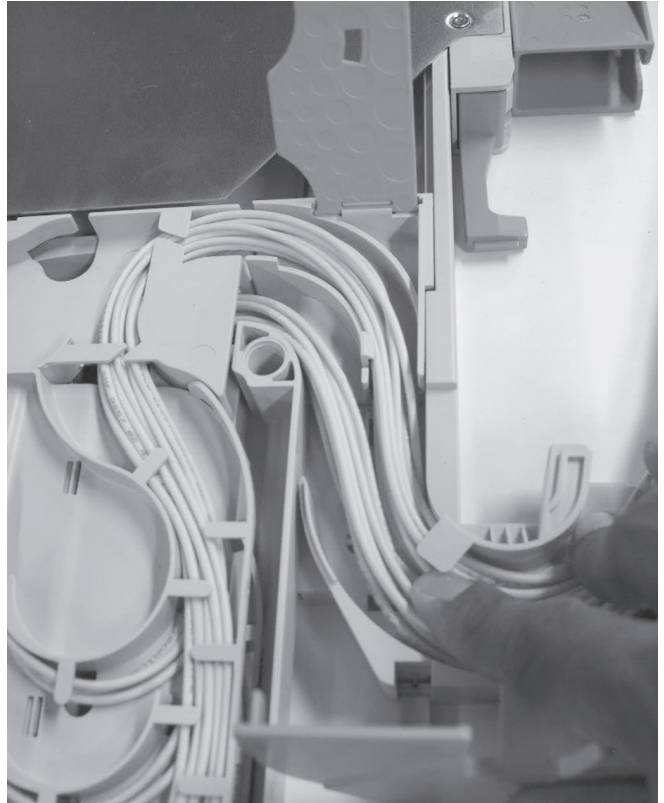
3.5 Guide patch cords through channels of bottom tray.



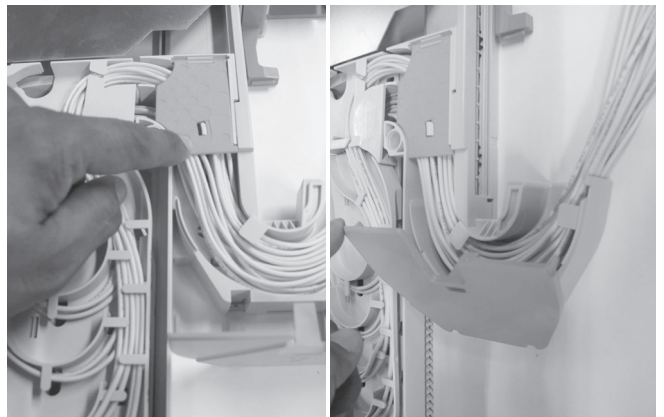
3.6 Correctly guide patch cords through channel bend control.

4 Routing patch cords on TOP TRAY (Right Side)

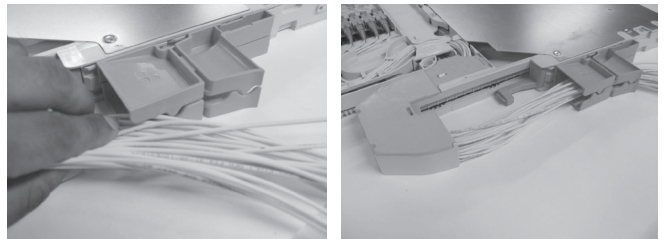
4.1 Repeat everything from point 3.2 till 3.6



4.2 Correctly guide overtubing into bend controls.

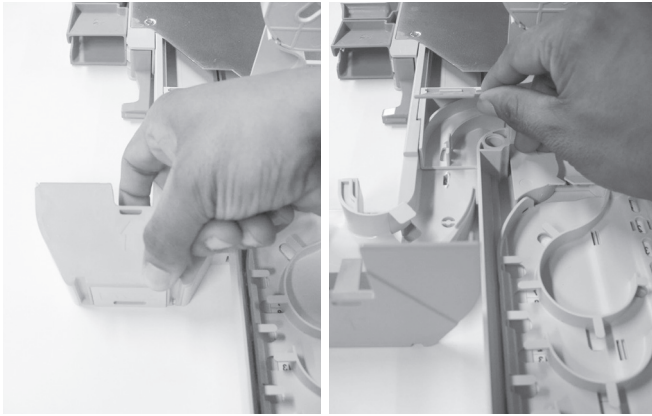


4.3 Carefully close FACT back lid and bend control cover.

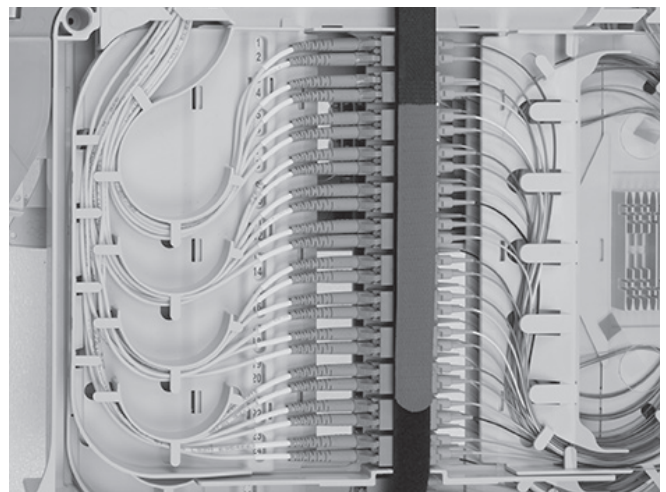
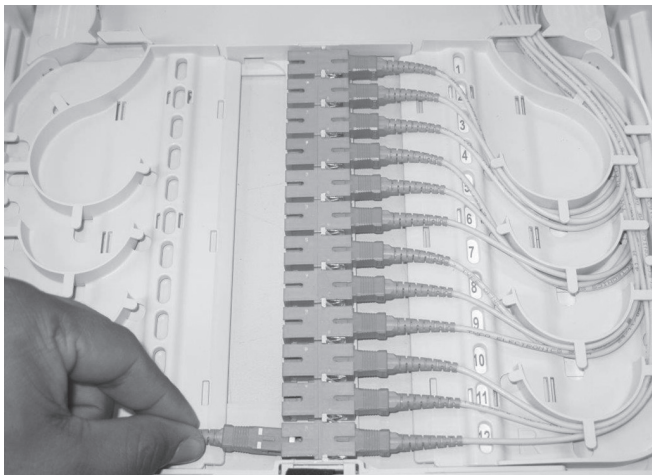
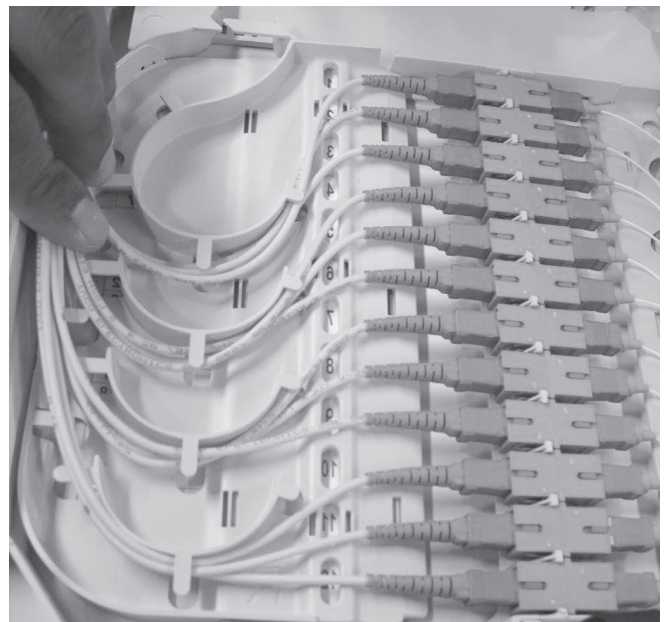


4.4 Guide patch cord through trumpet.

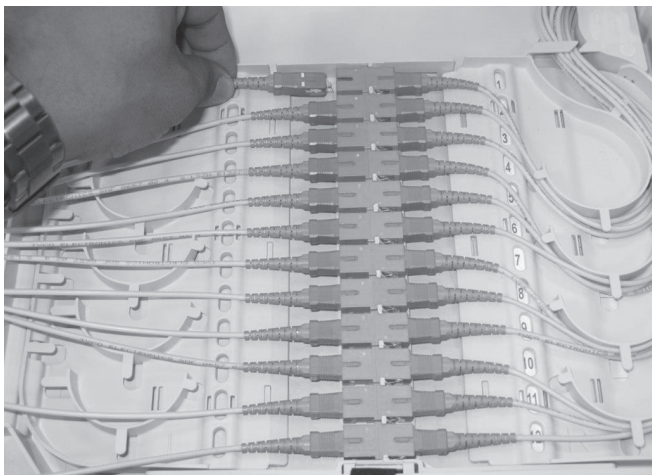
5 Routing patch cords on BOTTOM TRAY
(Left Side)



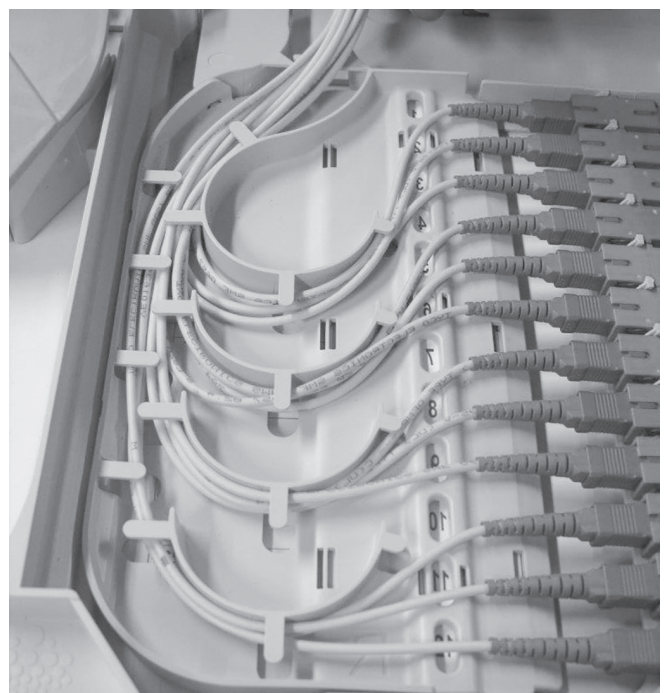
5.1 Open bend control cover and FACT back lid.



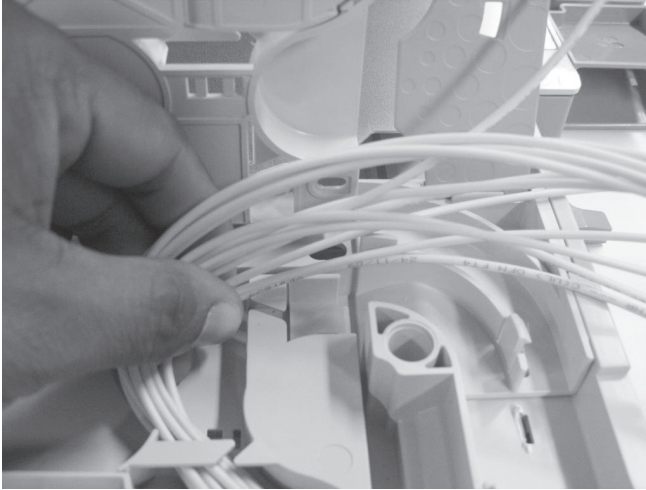
5.3 Guide 3 patch cords in case of SC and 6 patch cords in case of LC on each bend control as shown in the pictures.



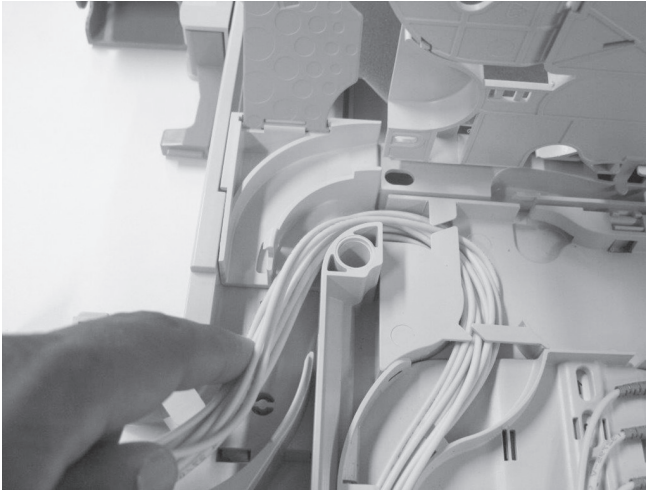
5.2 Install connector on bottom (position 12) and go to the top (position 1).



5.4 Correctly guide patch cords through channel on patch island.



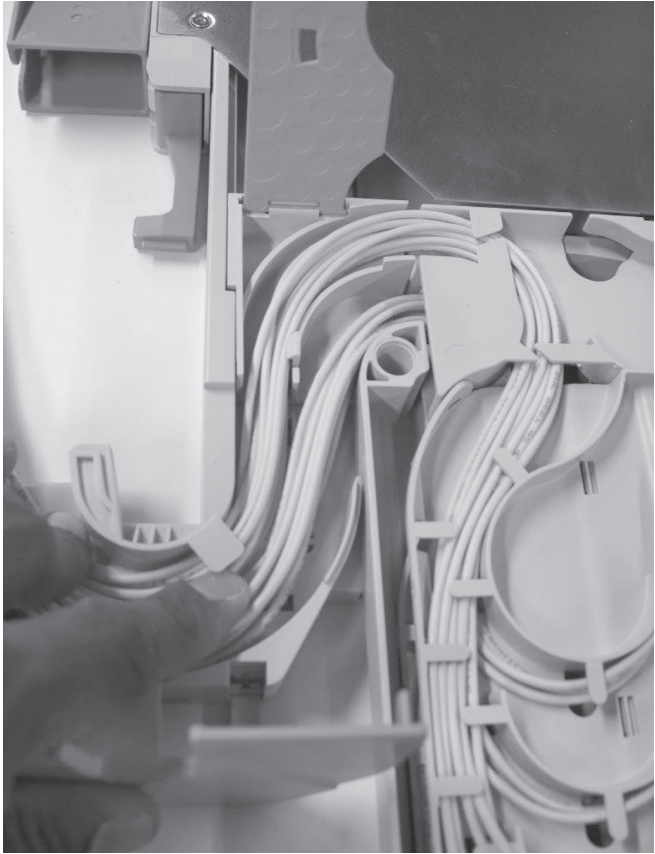
5.5 Guide patch cords through channels of bottom tray.



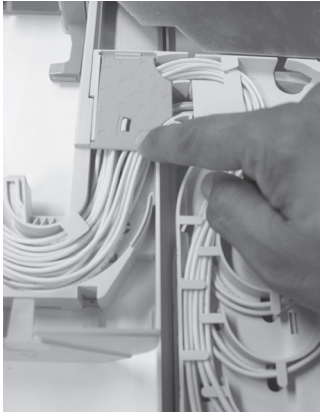
5.6 Correctly guide patch cords through channel bend control.

6 Routing patch cords on TOP TRAY (Left Side)

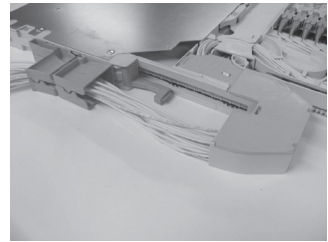
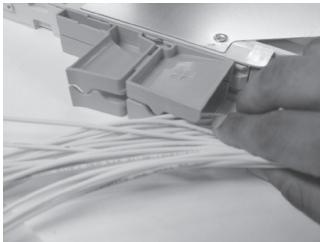
6.1 Repeat everything from point 5.1 till 5.6



6.2 Correctly guide over tubing into bend controls.



6.3 Carefully close FACT back lid and bend control cover.



6.4 Guide patch cord through trumpet.

To find out more about CommScope® products, visit us on the web at www.commscope.com

For technical assistance, customer service, or to report any missing/damaged parts, visit us at:
<http://www.commscope.com/SupportCenter>

© 2017 CommScope, Inc. All rights reserved.

All trademarks identified by ® or ™ are registered trademarks or trademarks, respectively, of CommScope, Inc.

This document is for planning purposes only and is not intended to modify or supplement any specifications or warranties relating to CommScope products or services.

This product is covered by one or more U.S. patents or their foreign equivalents. For patents, see:
www.commscope.com/ProductPatent/ProductPatent.aspx.