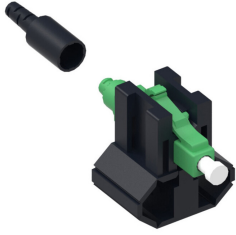


760184697 | SFC-LCF-09-8A-25-PACK QWIK II™ LC



Qwik II® Field Installable LC Connector, Singlemode-APC, Green, for 250 /900um, 25 per pack

Product Classification

Regional Availability	Asia Australia/New Zealand EMEA Latin America North America
Portfolio	CommScope®
Product Type	Fiber connector
Product Brand	Qwik II® TeraSPEED®
Product Series	Qwik II

General Specifications

Body Style	BTW
Color, boot	Black
Color, housing	Green
Ferrule Geometry	Factory polished
Interface	LC/APC
Interface Feature	Field Installable Mechanical splice

Dimensions

Length	42.6 mm 1.677 in
Compatible Cable Diameter	0.25 mm 0.01 in 0.9 mm 0.035 in

Material Specifications

Ferrule Material	Zirconia
-------------------------	----------

Mechanical Specifications

Cable Retention Strength, maximum	1.00 lb @ 0 °
--	---------------

Optical Specifications

Fiber Mode	Singlemode
Fiber Type	OS2

Insertion Loss Change, mating	0.2 dB
Optical Components Standard	ANSI/TIA-568. 3-D
Insertion Loss Change, temperature	0.3 dB
Insertion Loss, maximum	0.6 dB
Insertion Loss, typical	0.3 dB
Return Loss, minimum	50 dB

Environmental Specifications

Operating Temperature	-40 °C to +75 °C (-40 °F to +167 °F)
------------------------------	--------------------------------------

Packaging and Weights

Packaging quantity	25
---------------------------	----

Regulatory Compliance/Certifications

Agency	Classification
ISO 9001:2015	Designed, manufactured and/or distributed under this quality management system

* Footnotes

Insertion Loss Change, mating	TIA-568: Maximum insertion loss change after 500 matings
Insertion Loss Change, temperature	Maximum insertion loss change from -10 °C to +60 °C (+14 °F to +140 °F)