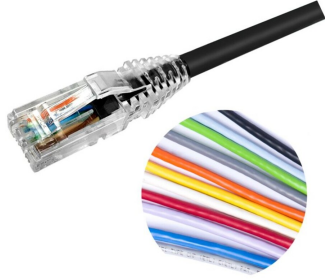


# NPC6AUVDA



## NPC RJ45 Patch Cord, category 6A, Unshielded, CM (PVC), A-Wired

- High-performance patch cords exceeding industry standards supporting NETCONNECT channel specifications
- Standardized transparent, slim-line boots provides consistent patch cord appearance and supports highest density applications
- Colored clips are available to fit the transparent boot, eliminating the need of multiple colors for matching every jacket color
- Colored pull latch tabs are available for easier plug release handling from the modular jack

### **OBSOLETE**

This product was discontinued on: **June 19, 2022**

#### Replaced By:

NPC6AUZDA

NETCONNECT® Cat 6A U/UTP A-wired RJ45 Patch Cord, LSZH

## Product Classification

|                              |   |
|------------------------------|---|
| <b>Regional Availability</b> | Australia/New Zealand   |
| <b>Portfolio</b>             | NETCONNECT®   |
| <b>Product Type</b>          | Twisted pair patch cord   |
| <b>Product Series</b>        | NPC   |
| <b>Ordering Note</b>         | Cords < 1 m are valid elements for use in a channel or as an equipment interconnect but due to their limited length are not guaranteed to meet component compliance requirements that were developed to assess the quality of longer cords   Cords > 1 m are authorized for use in channels and are an effective standalone method used to connect active devices |

## General Specifications

|                                       |  |
|---------------------------------------|--|
| <b>ANSI/TIA Category</b>              | 6A   |
| <b>Cable Type</b>                     | U/UTP (unshielded)   |
| <b>Conductor Type</b>                 | Solid  |
| <b>Interface, Connector A</b>         | RJ45 plug  |
| <b>Interface Feature, connector A</b> | Standard   |
| <b>Interface, Connector B</b>         | RJ45 plug  |
| <b>Interface Feature, connector B</b> | Standard   |
| <b>Jacket Color</b>                   | Black   Blue   Green   Orange   Red   Slate   White   Yellow |

# NPC6AUVDA

|                               |                     |
|-------------------------------|---------------------|
| <b>Pairs, quantity</b>        | 4                   |
| <b>Transmission Standards</b> | IEEE 802.3bt Type 4 |
| <b>Wiring</b>                 | T568A               |

## Dimensions

|  |                    |
|--|--------------------|
| <b>Cable Assembly Length Range (m)</b>   | 1 – 30             |
| <b>Cable Assembly Length Range (ft)</b>  | 1 – 100            |
| <b>Cable Assembly Length Range (cm)</b>  | 15 – 999           |
| <b>Cable Assembly Length Range (in)</b>  | 6 – 999            |
| <b>Diameter Over Jacket</b>              | 7.24 mm   0.285 in |
| <b>Compatible Conductor Gauge, solid</b> | 24 AWG             |

## Ordering Tree

NPC       -  <sup>10</sup>  OR  <sup>12</sup>     <sup>11</sup>

### Jacket Color

|    |    |        |
|----|----|--------|
| 10 | BK | Black  |
|    | BL | Blue   |
|    | GN | Green  |
|    | GY | Gray   |
|    | OR | Orange |
|    | PK | Pink   |
|    | RD | Red    |
|    | VT | Violet |
|    | WT | White  |
|    | YL | Yellow |

### UOM

|    |   |            |
|----|---|------------|
| 11 | F | Foot       |
|    | M | Meter      |
|    | N | Inch       |
|    | C | Centimeter |

### Length

|    |     |
|----|-----|
| 12 | XXX |
|----|-----|

### Notes

- Cords > 1m are authorized for use in channels and are an effective standalone method used to connect active devices
- Cords < 1m are also valid elements for use in a channel or as an equipment interconnect but due to their limited length are not guaranteed to meet component compliance requirements that were developed to assess the quality of longer cords

## Material Specifications

|                            |              |
|----------------------------|--------------|
| <b>Insulation Material</b> | Polyethylene |
| <b>Material Type</b>       | PVC          |

## Mechanical Specifications

|                                     |           |
|-------------------------------------|-----------|
| <b>Plug Insertion Life, minimum</b> | 750 times |
|-------------------------------------|-----------|

## Environmental Specifications

|                              |                                     |
|------------------------------|-------------------------------------|
| <b>Operating Temperature</b> | -20 °C to +60 °C (-4 °F to +140 °F) |
|------------------------------|-------------------------------------|

# NPC6AUVDA

---

**Relative Humidity** Up to 93%, non-condensing

**Environmental Space** Non-plenum

**Flammability Rating** CM

**Safety Standard** UL 1863

## Packaging and Weights

**Packaging quantity** 1