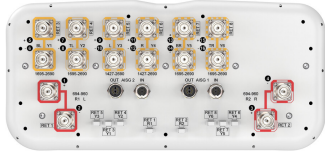


RRZZV4-65D-R8N43



16-port sector antenna, 4x 694-960, 4x 1427-2690, and 8x 1695-2690 MHz 65° HPBW, 8 x RET

- All Internal RET actuators are connected in “Cascaded SRET” configuration
- Retractable tilt indicator rods
- Antenna shape optimized for wind load reduction

General Specifications

Antenna Type	Sector
Band	Multiband
Grounding Type	RF connector inner conductor and body grounded to reflector and mounting bracket
Performance Note	Outdoor usage
RF Connector Interface	4.3-10 Female
RF Connector Location	Bottom
RF Connector Quantity, mid band	12
RF Connector Quantity, low band	4
RF Connector Quantity, total	16

Remote Electrical Tilt (RET) Information

RET Hardware	CommRET v2
RET Interface	8-pin DIN Female 8-pin DIN Male
RET Interface, quantity	2 female 2 male
Input Voltage	10–30 Vdc
Internal RET	Low band (2) Mid band (6)
Power Consumption, active state, maximum	8 W
Power Consumption, idle state, maximum	1 W
Protocol	3GPP/AISG 2.0 (Single RET)

Dimensions

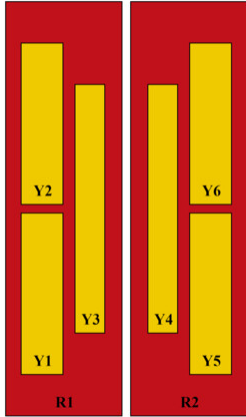
Width	430 mm 16.929 in
Depth	197 mm 7.756 in
Length	2769 mm 109.016 in

RRZZV4-65D-R8N43

Net Weight, antenna only

44.6 kg | 98.326 lb

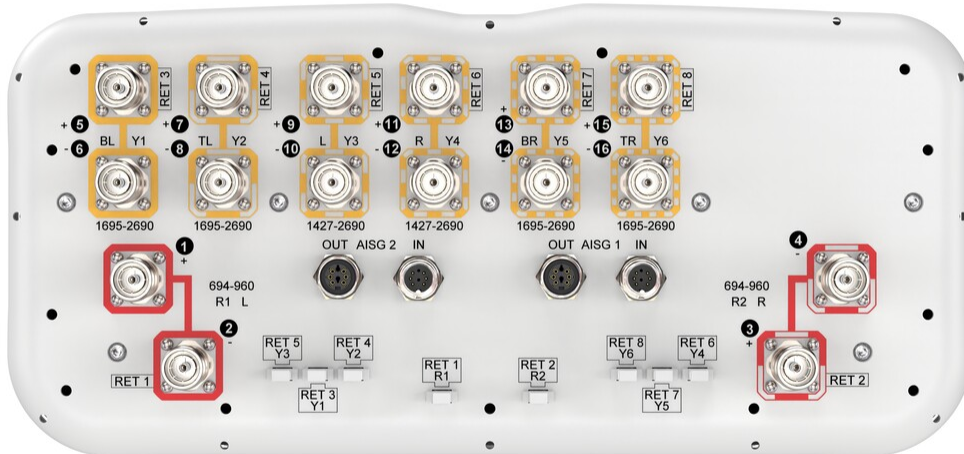
Array Layout



Array ID	Frequency (MHz)	RF Connector	RET (SRET)	AISG RET UID
R1	694-960	1 - 2	1	CPxxxxxxxxxxxxR1
R2	694-960	3 - 4	2	CPxxxxxxxxxxxxR2
Y1	1695-2690	5 - 6	3	CPxxxxxxxxxxxxY1
Y2	1695-2690	7 - 8	4	CPxxxxxxxxxxxxY2
Y3	1427-2690	9 - 10	5	CPxxxxxxxxxxxxY3
Y4	1427-2690	11 - 12	6	CPxxxxxxxxxxxxY4
Y5	1695-2690	13 - 14	7	CPxxxxxxxxxxxxY5
Y6	1695-2690	15 - 16	8	CPxxxxxxxxxxxxY6

(Sizes of colored boxes are not true depictions of array sizes)

Port Configuration



Electrical Specifications

RRZZV4-65D-R8N43

Impedance	50 ohm
Operating Frequency Band	1427 – 2690 MHz 1695 – 2690 MHz 694 – 960 MHz
Polarization	±45°
Total Input Power, maximum	1,200 W @ 50 °C

Electrical Specifications

	R1,R2	R1,R2	R1,R2	Y3,Y4	Y3,Y4	Y3,Y4	Y3,Y4	Y3,Y4
Frequency Band, MHz	698–806	790–894	890–960	1427–1518	1695–1995	1920–2300	2300–2500	2490–2690
RF Port	1-4	1-4	1-4	9-12	9-12	9-12	9-12	9-12
Gain at Mid Tilt, dBi	15.5	16.1	16.4	15.4	16.2	17.3	18.2	18.3
Beamwidth, Horizontal, degrees	61	55	53	64	68	68	61	58
Beamwidth, Vertical, degrees	7.7	6.9	6.4	6.9	5.7	5.1	4.5	4.3
Beam Tilt, degrees	2–12	2–12	2–12	2–12	2–12	2–12	2–12	2–12
USLS (First Lobe), dB	15	15	16	17	16	17	18	18
Front-to-Back Ratio at 180°, dB	35	35	32	32	32	32	32	33
Front-to-Back Total Power at 180° ± 30°, dB	23	23	23	24	26	26	27	27
Isolation, Cross Polarization, dB	27	27	27	26	26	26	26	26
Isolation, Inter-band, dB	27	27	27	26	26	26	26	26
VSWR Return loss, dB	1.5 14.0	1.5 14.0	1.5 14.0	1.5 14.0	1.5 14.0	1.5 14.0	1.5 14.0	1.5 14.0
PIM, 3rd Order, 2 x 20 W, dBc	-153	-153	-153	-153	-153	-153	-153	-153
Input Power per Port at 50°C, maximum, watts	300	300	300	250	250	250	200	200

Electrical Specifications, BASTA

	698–806	790–894	890–960	1427–1518	1695–1995	1920–2300	2300–2500	2490–2690
Frequency Band, MHz	698–806	790–894	890–960	1427–1518	1695–1995	1920–2300	2300–2500	2490–2690
Gain by all Beam Tilts, average, dBi	15.4	16	16.3	15.4	16.1	17.1	18	18.1
Gain by all Beam Tilts Tolerance, dB	±0.7	±0.3	±0.4	±0.7	±0.8	±0.9	±0.6	±0.7
Beamwidth, Horizontal Tolerance, degrees	±6	±5	±4	±11	±8	±9	±5	±4
Beamwidth, Vertical Tolerance, degrees	±0.5	±0.4	±0.3	±0.3	±0.4	±0.4	±0.2	±0.2
USLS, beampeak to 20° above	15	15	16	16	16	16	17	18

RRZZV4-65D-R8N43

beampeak, dB

CPR at Boresight, dB	24	22	21	18	17	17	18	15
CPR at Sector, dB	10	7	8	7	5	4	6	2

Electrical Specifications

	Y1,Y2,Y5,Y6 Y1,Y2,Y5,Y6 Y1,Y2,Y5,Y6 Y1,Y2,Y5,Y6			
Frequency Band, MHz	1695–1995	1920–2300	2300–2500	2490–2690
RF Port	5-8,13-16	5-8,13-16	5-8,13-16	5-8,13-16
Gain at Mid Tilt, dBi	16.1	17.2	17.9	17.7
Beamwidth, Horizontal, degrees	69	64	62	61
Beamwidth, Vertical, degrees	6.4	5.6	5	4.8
Beam Tilt, degrees	2–12	2–12	2–12	2–12
USLS (First Lobe), dB	15	15	16	17
Front-to-Back Ratio at 180°, dB	32	31	32	33
Front-to-Back Total Power at 180° ± 30°, dB	26	25	26	26
Isolation, Cross Polarization, dB	27	27	27	27
Isolation, Inter-band, dB	27	27	27	27
VSWR Return loss, dB	1.5 14.0	1.5 14.0	1.5 14.0	1.5 14.0
PIM, 3rd Order, 2 x 20 W, dBc	-153	-153	-153	-153
Input Power per Port at 50°C, maximum, watts	250	250	200	200

Electrical Specifications, BASTA

Frequency Band, MHz	1695–1995	1920–2300	2300–2500	2490–2690
Gain by all Beam Tilts, average, dBi	16	17.1	17.8	17.6
Gain by all Beam Tilts Tolerance, dB	±0.8	±0.9	±0.4	±0.6
Beamwidth, Horizontal Tolerance, degrees	±9	±9	±5	±6
Beamwidth, Vertical Tolerance, degrees	±0.6	±0.5	±0.2	±0.2
USLS, beampeak to 20° above beampeak, dB	15	15	16	16
CPR at Boresight, dB	18	17	18	17

RRZZV4-65D-R8N43

CPR at Sector, dB 7 6 9 4

Mechanical Specifications

Wind Loading @ Velocity, frontal	680.0 N @ 150 km/h (152.9 lbf @ 150 km/h)
Wind Loading @ Velocity, lateral	347.0 N @ 150 km/h (78.0 lbf @ 150 km/h)
Wind Loading @ Velocity, maximum	1,020.0 N @ 150 km/h (229.3 lbf @ 150 km/h)
Wind Loading @ Velocity, rear	434.0 N @ 150 km/h (97.6 lbf @ 150 km/h)
Wind Speed, maximum	241 km/h (150 mph)

Packaging and Weights

Width, packed	511 mm 20.118 in
Depth, packed	318 mm 12.52 in
Length, packed	2890 mm 113.78 in
Weight, gross	64.3 kg 141.757 lb

Regulatory Compliance/Certifications

Agency	Classification
CHINA-ROHS	Below maximum concentration value
ISO 9001:2015	Designed, manufactured and/or distributed under this quality management system
REACH-SVHC	Compliant as per SVHC revision on www.commscope.com/ProductCompliance
ROHS	Compliant
UK-ROHS	Compliant



Included Products

- | | | |
|-----------|---|--|
| BSAMNT-4 | - | Wide Profile Antenna Downtilt Mounting Kit for 2.4 - 4.5 in (60 - 115 mm) OD round members. Kit contains one scissor top bracket set and one bottom bracket set. |
| BSAMNT-M4 | - | Middle Downtilt Mounting Kit for Long Antennas for 2.4 - 4.5 in (60 - 115 mm) OD round members. Kit contains one scissor bracket set. |

* Footnotes

Performance Note Severe environmental conditions may degrade optimum performance

BSAMNT-4



Wide Profile Antenna Downtilt Mounting Kit for 2.4 - 4.5 in (60 - 115 mm) OD round members. Kit contains one scissor top bracket set and one bottom bracket set.

Product Classification

Product Type Downtilt mounting kit

General Specifications

Application Outdoor

Color Silver

Dimensions

Compatible Diameter, maximum 115 mm | 4.528 in

Compatible Diameter, minimum 60 mm | 2.362 in

Weight, net 6.5 kg | 14.33 lb

Material Specifications

Material Type Galvanized steel

Packaging and Weights

Included Brackets | Hardware

Packaging quantity 1

Regulatory Compliance/Certifications

Agency	Classification
CHINA-ROHS	Below maximum concentration value
ISO 9001:2015	Designed, manufactured and/or distributed under this quality management system
REACH-SVHC	Compliant as per SVHC revision on www.commscope.com/ProductCompliance
ROHS	Compliant
UK-ROHS	Compliant



BSAMNT-M4



Middle Downtilt Mounting Kit for Long Antennas for 2.4 - 4.5 in (60 - 115 mm) OD round members. Kit contains one scissor bracket set.

Product Classification

Product Type Downtilt mounting kit

General Specifications

Application Outdoor

Color Silver

Dimensions

Compatible Diameter, maximum 115 mm | 4.528 in

Compatible Diameter, minimum 60 mm | 2.362 in

Weight, net 4.6 kg | 10.141 lb

Material Specifications

Material Type Galvanized steel

Packaging and Weights

Included Brackets | Hardware

Packaging quantity 1

Regulatory Compliance/Certifications

Agency	Classification
CHINA-ROHS	Below maximum concentration value
ISO 9001:2015	Designed, manufactured and/or distributed under this quality management system
REACH-SVHC	Compliant as per SVHC revision on www.commscope.com/ProductCompliance
ROHS	Compliant
UK-ROHS	Compliant

