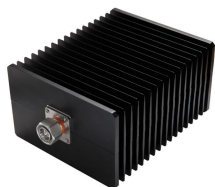


T-100-43-M

Termination Load, 0–3000 MHz



OBSOLETE

This product was discontinued on: December 31, 2019

Replaced By:

T-100-UW-43-M

Termination Load, 0–6000 MHz

Product Classification

Regional Availability

Asia | Australia/New Zealand | EMEA | Latin America | North America

Product Type

Termination Load

General Specifications

Device Type

Termination Load

Application

Indoor/Outdoor

Color

Black

Inner Contact Plating

Silver

Interface

4.3-10 Male

Outer Contact Plating

Trimetal

Dimensions

Height

88.6 mm | 3.488 in

Width

140 mm | 5.512 in

Length

190 mm | 7.48 in

Electrical Specifications

Return Loss, minimum

20.8 dB

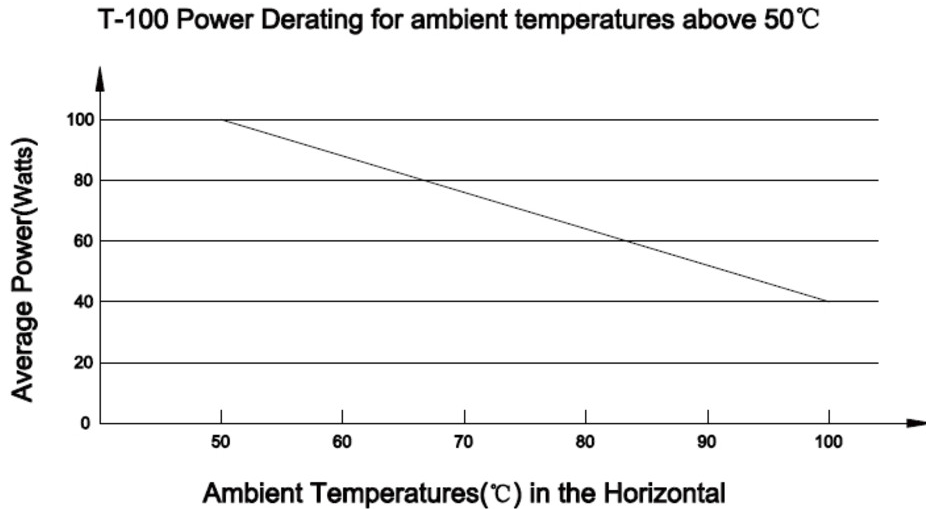
Average Power, maximum

100 W

T-100-43-M

Impedance	50 ohm
Operating Frequency Band	0 – 3000 MHz
VSWR	1.2

Derating Curve



Environmental Specifications

Operating Temperature	-25 °C to +50 °C (-13 °F to +122 °F)
Relative Humidity	Up to 100%
Ingress Protection Test Method	IEC 60529:2001, IP65

Packaging and Weights

Height, packed	89 mm 3.504 in
Width, packed	142 mm 5.591 in
Length, packed	192 mm 7.559 in
Weight, gross	2.3 kg 5.071 lb
Weight, net	2.1 kg 4.63 lb

Regulatory Compliance/Certifications

Agency	Classification
--------	----------------

T-100-43-M

CHINA-ROHS

Below maximum concentration value

ISO 9001:2015

Designed, manufactured and/or distributed under this quality management system

REACH-SVHC

Compliant as per SVHC revision on www.commscope.com/ProductCompliance

ROHS

Compliant

