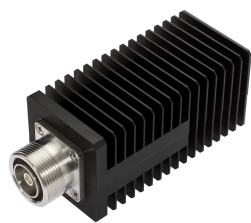


# T-50-DF-S



Termination Load, 0–3000 MHz

## OBSOLETE

This product was discontinued on: September 30, 2021

## Product Classification

<b>Regional Availability</b>	Asia   Australia/New Zealand   EMEA   Latin America   North America
<b>Product Type</b>	Termination Load

## General Specifications

<b>Device Type</b>	Termination Load
<b>Application</b>	Indoor/Outdoor
<b>Color</b>	Black
<b>Inner Contact Plating</b>	Silver
<b>Interface</b>	7-16 DIN Female
<b>Outer Contact Plating</b>	Trimetal

## Dimensions

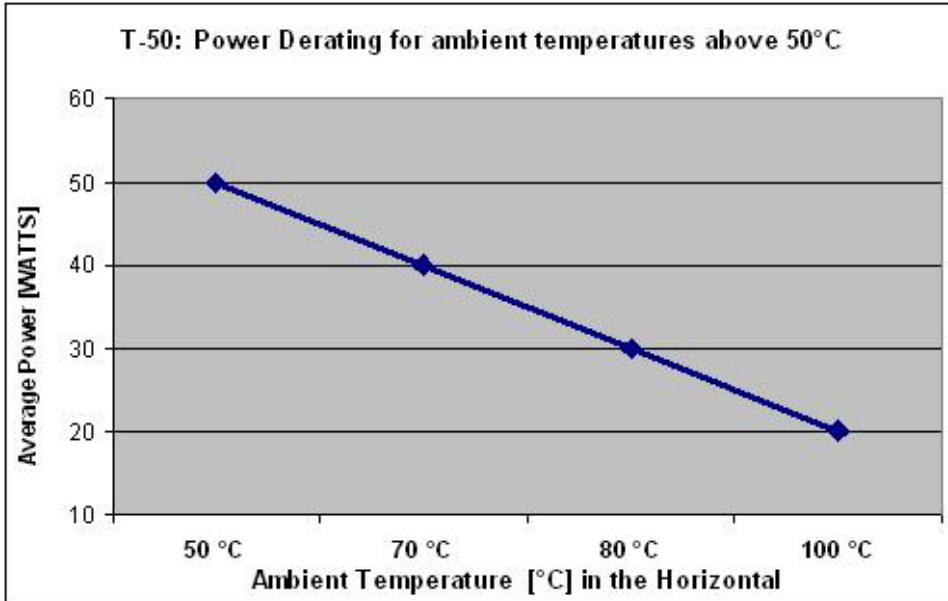
<b>Height</b>	50 mm   1.969 in
<b>Width</b>	50 mm   1.969 in
<b>Length</b>	125.5 mm   4.941 in

## Electrical Specifications

<b>Return Loss, minimum</b>	23 dB
<b>Average Power, maximum</b>	50 W
<b>Impedance</b>	50 ohm
<b>Operating Frequency Band</b>	0 – 3000 MHz
<b>VSWR</b>	1.15

# T-50-DF-S

## Derating Curve



## Environmental Specifications

<b>Operating Temperature</b>	-25 °C to +50 °C (-13 °F to +122 °F)
<b>Relative Humidity</b>	Up to 100%
<b>Ingress Protection Test Method</b>	IEC 60529:2001, IP65

## Packaging and Weights

<b>Height, packed</b>	56 mm   2.205 in
<b>Width, packed</b>	76 mm   2.992 in
<b>Length, packed</b>	156 mm   6.142 in
<b>Volume</b>	664 mm <sup>3</sup>   0.041 in <sup>3</sup>
<b>Weight, gross</b>	0.47 kg   1.036 lb
<b>Weight, net</b>	0.42 kg   0.926 lb

## Regulatory Compliance/Certifications

<b>Agency</b>	<b>Classification</b>
CHINA-ROHS	Below maximum concentration value
ISO 9001:2015	Designed, manufactured and/or distributed under this quality management system
REACH-SVHC	Compliant as per SVHC revision on <a href="http://www.commscope.com/ProductCompliance">www.commscope.com/ProductCompliance</a>

# T-50-DF-S

---

ROHS

Compliant

UK-ROHS

Compliant

