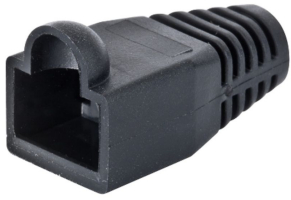


9-336513-7



Modular Plug Boot, for category 5E and 6/6A EMT plugs, 6.5 mm max cable OD, 100 per box, black

OBSOLETE

This product was discontinued on: July 1, 2017

Replaced By:

2843033-3
MP-Boot-S/SL-C

Modular Plug Shielded Slim-Line Boot for Category 6A/6 and Category 5e EMT Plugs, 5.7 to 7.0 mm, transparent

Product Classification

Regional Availability	Asia Australia/New Zealand EMEA Latin America North America
Portfolio	NETCONNECT®
Product Type	Modular plug boot

General Specifications

Boot Feature	Snagless
Color	Black
Compatible Plug Type	Cat 6

Dimensions

Compatible Cable Diameter, maximum	6.5 mm 0.256 in
Compatible Cable Diameter, minimum	6 mm 0.236 in

Packaging and Weights

Packaging quantity	100
Packaging Type	Bag Box

Regulatory Compliance/Certifications

9-336513-7

Agency

CHINA-ROHS
REACH-SVHC
ROHS

Classification

Below maximum concentration value
Compliant as per SVHC revision on www.commscope.com/ProductCompliance
Compliant

