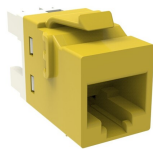


2291217-8 | KJ510-YL



KJ-Series Modular Jack, RJ45, Cat5e Unshielded, Yellow

OBSOLETE

Replaced By:

2291217-YL
KJ510-YL

KJ-Series Modular Jack, RJ45, Cat5e Unshielded, Yellow

Product Classification

Regional Availability	Asia Australia/New Zealand EMEA Latin America North America
Portfolio	CommScope®
Product Type	Modular jack
Product Series	KJ Series

General Specifications

ANSI/TIA Category	5e
Cable Type	Unshielded
Color	Yellow
Conductor Type	Solid Stranded
Integrated Dust Cover Type	None
Mounting	Hubbell® faceplates Leviton® faceplates Panduit® faceplates
Outlet Type	Keystone
Termination Tool	110 Punchdown tool SL Termination tool
Termination Type	IDC
Transmission Standards	ANSI/TIA-568-C.2 ISO/IEC 11801 Class D
Wiring	T568A T568B

Dimensions

Panel Cutout, recommended	14.79 x 19.31 mm (0.58 x 0.76 in)
---------------------------	-----------------------------------

2291217-8 | KJ510-YL

Panel Thickness, recommended	1.6 mm 0.063 in
Height	16.13 mm 0.635 in
Width	16.48 mm 0.649 in
Depth	30.48 mm 1.2 in
Compatible Insulated Conductor Diameter, maximum	1.27 mm 0.05 in
Contact Plating Thickness	1.27 µm
Compatible Conductor Gauge, solid	24–22 AWG
Compatible Conductor Gauge, stranded	26–24 AWG

Electrical Specifications

Remote Powering	Fully supports the safe delivery of power over LAN cabling described by IEEE 802.3bt (Type 4) and complies with the unmating under electrical load requirements prescribed by IEC 60512-99-002
PoE Durability	Supports IEEE 802.3bt Type 4 (90 W) applications greater than 3000 plug to jack mating cycles

Material Specifications

Contact Base Material	Beryllium copper
Contact Plating Material	Gold
Material Type	Polycarbonate

Mechanical Specifications

Plug to Jack Mating Cycles	Complies to IEC 60603-7 series
----------------------------	--------------------------------

Environmental Specifications

Flammability Rating	UL 94 V-0
---------------------	-----------

Packaging and Weights

Packaging quantity	1
Packaging Type	Bag

Regulatory Compliance/Certifications

Agency	Classification
CHINA-ROHS	Below maximum concentration value
REACH-SVHC	Compliant as per SVHC revision on www.commscope.com/ProductCompliance
ROHS	Compliant

UK-ROHS

Compliant

