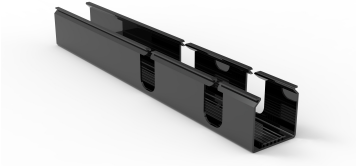


FGSB-MSHS-C



FiberGuide® Vertical Straight Section with 4in Slot Spacing, 2x2in, Black

OBSOLETE

This product was discontinued on: October 1, 2023

Replaced By:

FGSB-KTW1-C

FiberGuide® Vertical Duct Kit with 4in Slot Spacing and Snap-On Cover, 2x2in, Black

Product Classification

Regional Availability	Asia Australia/New Zealand EMEA Latin America North America
Portfolio	CommScope®
Product Type	Slotted vertical
Product Brand	FiberGuide®
Product Series	FGS

General Specifications

Product Feature	Slotted
Color	Black
Orientation	Vertical
Section Type	Straight section

Dimensions

Height	50.8 mm 2 in
Width	50.8 mm 2 in
Length	1829 mm 72.008 in
System Dimensions	51 mm x 51 mm (2 in x 2 in)

Ordering Tree

FGSB-MSHS-C

9	10	11				
FGS	B	-	MSHS	-	F	10

Section Color

9	empty	yellow
	B	black

Section Length

11	empty	6 ft
	10	10 ft
	12	12 ft

Section Size

10	A	4 x 4 in
	B	4 x 6 in
	C	2 x 2 in
	D	4 x 4 in, slotted duct, 2 in slot spacing
	F	4 x 12 in
	F-CF	4 x 12 in, with center divider
	G	2 x 6 in
	H	4 x 24 in
	K	2 x 4 in, slotted duct, 2 in slot spacing
	STOR-B	4 x 6 in, with slack storage spools
	STOR-G	2 x 6 in, with slack storage spools
	STOR-F	4 x 12 in, with slack storage spools

Material Specifications

Material Type Engineering Thermoplastic

Environmental Specifications

Flammability Rating CSA S143 | UL 2024 | UL 94 V-0

Halogen Characteristics Blue Angel | TCO '99 | WEEE

Safety Standard CSA | UL

Packaging and Weights

Weight, net 0.473 kg | 1.043 lb

Regulatory Compliance/Certifications

Agency	Classification
CHINA-ROHS	Below maximum concentration value
REACH-SVHC	Compliant as per SVHC revision on www.commscope.com/ProductCompliance
ROHS	Compliant
UK-ROHS	Compliant



