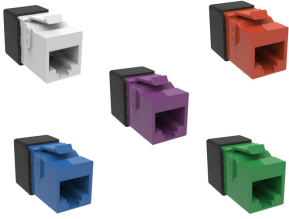


Base Product



KJ-Series Modular Jack, RJ45, Cat6A Unshielded

Product Classification

Regional Availability	Asia Australia/New Zealand EMEA Latin America
Portfolio	NETCONNECT®
Product Type	Modular jack
Product Series	KJ Series

General Specifications

ANSI/TIA Category	6A
Cable Type	Unshielded
Conductor Type	Solid Stranded
Mounting	Keystone faceplates and panels
Outlet Type	Standard
Termination Tool	SL Termination tool
Termination Type	IDC
Transmission Standards	ANSI/TIA-568.2-D ISO/IEC 11801 Class EA
Wiring	T568A T568B

Dimensions

Panel Cutout, recommended	14.78 x 19.30 mm (0.58 x 0.76 in)
Panel Thickness, recommended	1.6 mm 0.063 in
Height	16.13 mm 0.635 in
Width	16.48 mm 0.649 in
Depth	30.48 mm 1.2 in
Compatible Cable Diameter, maximum	7.24 mm 0.285 in
Compatible Insulated Conductor Diameter, maximum	1.45 mm 0.057 in
Contact Plating Thickness	1.27 µm

KJ10G

Compatible Conductor Gauge, solid 24–22 AWG

Compatible Conductor Gauge, stranded 26–24 AWG

Electrical Specifications

Remote Powering Fully supports the safe delivery of power over LAN cabling described by IEEE 802.3bt (Type 4) and complies with the unmating under electrical load requirements prescribed by IEC 60512-99-002

PoE Durability Supports IEEE 802.3bt Type 4 (90 W) applications greater than 3000 plug to jack mating cycles

Material Specifications

Contact Base Material Beryllium copper

Contact Plating Material Gold

Material Type Copper alloy | High-impact, flame retardant, thermoplastic | Polycarbonate

Mechanical Specifications

Plug to Jack Mating Cycles Complies to IEC 60603-7 series

Environmental Specifications

Operating Temperature -10 °C to +60 °C (+14 °F to +140 °F)

Storage Temperature -40 °C to +70 °C (-40 °F to +158 °F)

Flammability Rating UL 94 V-0