

EGRZV-65D-R5N43



10-port sector antenna, 2x 694-862, 2x 880-960, 2x 694-960, 2x 1427-2690 and 2x 1695-2690 MHz 65° HPBW, 5 x RET

- All Internal RET actuators are connected in “Cascaded SRET” configuration
- Retractable tilt indicator rods
- Antenna shape optimized for wind load reduction

General Specifications

Antenna Type	Sector
Band	Multiband
Color	Light Gray (RAL 7035)
Grounding Type	RF connector inner conductor and body grounded to reflector and mounting bracket
Performance Note	Outdoor usage
Radome Material	Fiberglass, UV resistant
Radiator Material	Low loss circuit board
Reflector Material	Aluminum
RF Connector Interface	4.3-10 Female
RF Connector Location	Bottom
RF Connector Quantity, high band	4
RF Connector Quantity, low band	6
RF Connector Quantity, total	10

Remote Electrical Tilt (RET) Information

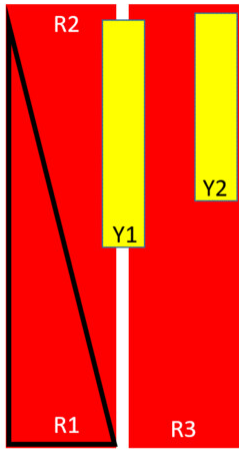
RET Hardware	CommRET v2
RET Interface	8-pin DIN Female 8-pin DIN Male
RET Interface, quantity	2 female 2 male
Input Voltage	10–30 Vdc
Internal RET	High band (2) Low band (3)
Power Consumption, active state, maximum	8 W
Power Consumption, idle state, maximum	1 W
Protocol	3GPP/AISG 2.0 (Single RET)

EGRZV-65D-R5N43

Dimensions

Width	430 mm 16.929 in
Depth	197 mm 7.756 in
Length	2769 mm 109.016 in
Net Weight, without mounting kit	49.6 kg 109.349 lb

Array Layout



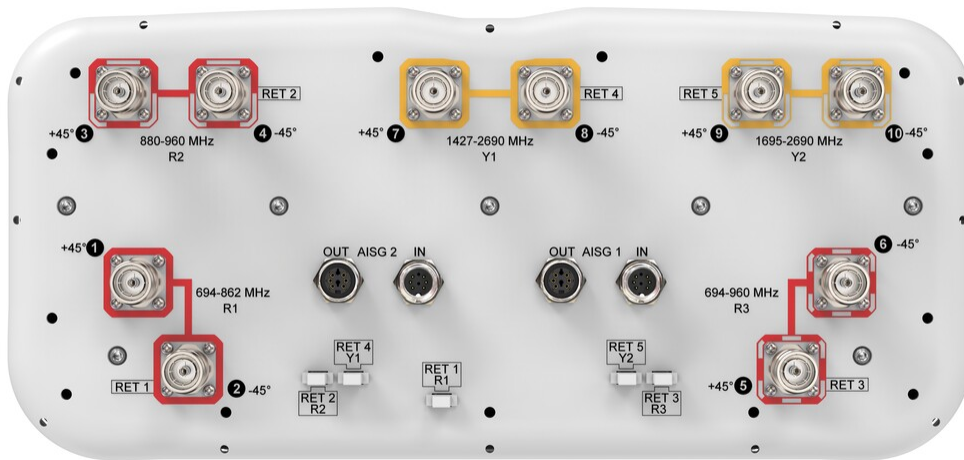
Array	Freq (MHz)	Conns	RET (SRET)	AISG RET UID
R1	694-862	1-2	1	CPxxxxxxxxxxxxxxxxR1
R2	880-960	3-4	2	CPxxxxxxxxxxxxxxxxR2
R3	694-960	5-6	3	CPxxxxxxxxxxxxxxxxR3
Y1	1427-2690	7-8	4	CPxxxxxxxxxxxxxxxxY1
Y2	1695-2690	9-10	5	CPxxxxxxxxxxxxxxxxY2

Left
Bottom

Right
Bottom
(Sizes of colored boxes are not true depictions of array sizes)

Port Configuration

EGRZV-65D-R5N43



Electrical Specifications

Impedance	50 ohm
Operating Frequency Band	1427 – 2690 MHz 1695 – 2690 MHz 694 – 862 MHz 694 – 960 MHz 880 – 960 MHz
Polarization	±45°
Total Input Power, maximum	900 W @ 50 °C

Electrical Specifications

Frequency Band, MHz	694–862	880–960	694–960	1427–1518	1695–2180	2300–2690	1695–2200	2300–2690
Gain, dBi	15.7	16.3	16.5	16.7	17.5	17.7	17.5	18.2
Beamwidth, Horizontal, degrees	59	55	58	55	59	66	58	56
Beamwidth, Vertical, degrees	7.3	6.3	6.9	7.1	5.7	4.4	6.1	5
Beam Tilt, degrees	2–12	2–12	2–12	2–12	2–12	2–12	2–12	2–12
USLS (First Lobe), dB	16	17	15	23	20	19	17	17
Front-to-Back Ratio at 180°, dB	32	31	31	39	29	30	30	32
Isolation, Cross Polarization, dB	27	27	27	26	26	26	27	27
Isolation, Inter-band, dB	27	27	27	27	27	27	27	27
VSWR Return loss, dB	1.5 14.0	1.5 14.0	1.5 14.0	1.5 14.0	1.5 14.0	1.5 14.0	1.5 14.0	1.5 14.0

EGRZV-65D-R5N43

PIM, 3rd Order, 2 x 20 W, dBc	-153	-153	-153	-153	-153	-153	-153	-153
Input Power per Port at 50°C, maximum, watts	250	250	250	200	200	150	200	150

Electrical Specifications, BASTA

Frequency Band, MHz	694–862	880–960	694–960	1427–1518	1695–2180	2300–2690	1695–2200	2300–2690
Gain by all Beam Tilts, average, dBi	15.4	16	15.8	16.4	17.1	17.5	16.9	17.9
Gain by all Beam Tilts Tolerance, dB	±0.7	±0.5	±0.7	±0.4	±0.4	±0.4	±1	±0.4
Beamwidth, Horizontal Tolerance, degrees	±7.6	±4	±6.6	±11.4	±9.5	±6.3	±6.1	±5.7
Beamwidth, Vertical Tolerance, degrees	±0.7	±0.4	±1	±0.3	±0.6	±0.3	±0.6	±0.4
USLS, beampeak to 20° above beampeak, dB	14	14	12	15	18	16	14	15
Front-to-Back Total Power at 180° ± 30°, dB	23	24	24	26	26	25	24	26
CPR at Boresight, dB	22	24	23	21	16	15	15	17

Mechanical Specifications

Wind Loading @ Velocity, frontal	680.0 N @ 150 km/h (152.9 lbf @ 150 km/h)
Wind Loading @ Velocity, lateral	347.0 N @ 150 km/h (78.0 lbf @ 150 km/h)
Wind Loading @ Velocity, maximum	1,020.0 N @ 150 km/h (229.3 lbf @ 150 km/h)
Wind Loading @ Velocity, rear	434.0 N @ 150 km/h (97.6 lbf @ 150 km/h)
Wind Speed, maximum	241 km/h (150 mph)

Packaging and Weights

Width, packed	530 mm 20.866 in
Depth, packed	356 mm 14.016 in
Length, packed	2897 mm 114.055 in
Weight, gross	69.2 kg 152.56 lb

Regulatory Compliance/Certifications

Agency	Classification
CHINA-ROHS	Below maximum concentration value
ISO 9001:2015	Designed, manufactured and/or distributed under this quality management system
REACH-SVHC	Compliant as per SVHC revision on www.commscope.com/ProductCompliance

EGRZV-65D-R5N43

ROHS Compliant

UK-ROHS Compliant



Included Products

- BSAMNT-4 – Wide Profile Antenna Downtilt Mounting Kit for 2.4 - 4.5 in (60 - 115 mm) OD round members. Kit contains one scissor top bracket set and one bottom bracket set.
- BSAMNT-M4 – Middle Downtilt Mounting Kit for Long Antennas for 2.4 - 4.5 in (60 - 115 mm) OD round members. Kit contains one scissor bracket set.

* Footnotes

Performance Note Severe environmental conditions may degrade optimum performance