

Plastic Support Blocks

Bulletin 7717392 Rev. D

Product Description

Plastic Support Blocks are designed to secure multiple runs of cable in bundled space saving configurations. Plastic Support Blocks can be mounted directly to existing tower members using single, double, or triple stack hardware kits recommended at 3ft (0.9m) intervals. For additional details on spacing, you can reference the CommScope Hanger Spacing Guidelines.

www.commscope.com/globalassets/digizuite/56531-hanger-spacing-guidelinesrevb-12-19-18-pdf.pdf

Notice

Installation of this product should only be performed by trained, qualified and experienced personnel. Installation instructions for this product should be read thoroughly before installation is performed. CommScope disclaims any liability or responsibility for the results of improper or unsafe installation practice and the warranty will be voided.

Block Part No.	Cable	Single Hardware Part No.	Double Hardware Part No.	Triple Hardware Part No.
BHD-4MM	Z-004-MP-8F-M60BK	243095-9	243095-5	243095-1
BHD-14	FSJ1-50A	243095-9	243095-9	243095-5
BHD-38	FSJ2-50, LDF2-50	243095-9	243095-5	243095-1
BHD-58	18-20mm	243095-9	243095-5	243095-1
BHD-125	FSJ4-50B	243095-9	243095-5	243095-1
BHD-12	LDF4-50A, FXL-540	243095-9	243095-5	243095-1
BHD-78	AVA5-50, AVA5-50FX, FXL-780	243095-9	243095-5	243095-1
BHD-114, BHS-114	AVA6-50	243095-10	243095-6	243095-2
BHD-158, BHS-158	AVA7-50, FXL-1873	243095-10	243095-6	243095-2

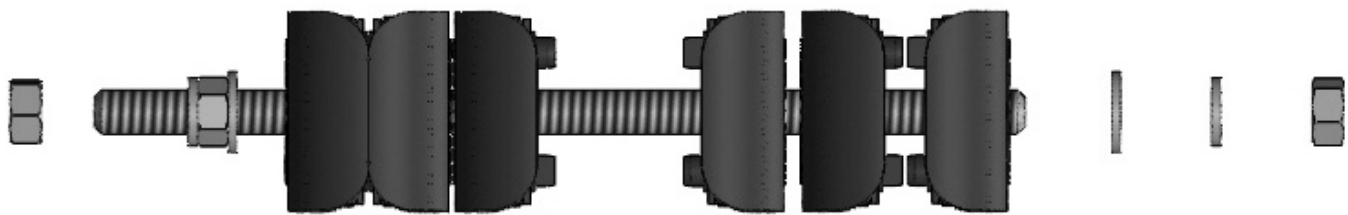
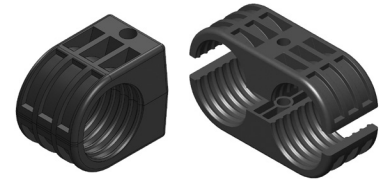
Stacking Hardware also available in 10mm versions

Material List

Hanger kits include 10 sets of Plastic Support Block hangers

Required Tools

- (2) – 9/16" Wrenches
- (1) – Torque Wrench with 9/16" crows foot



NOTE: Critical to maintain a tightening torque between 3-5Nm. Failure to do so will adversely affect hanger performance.

CommScope

1100 CommScope Place SE P.O. Box 339, Hickory, NC 28603-0339
 (828) 324-2200 (800) 982-1708
www.commscope.com

Customer Service CommScope Mobility Solutions (Outdoor Wireless Networks)

Phone: (888) 297-6433 – Option 3
Have an issue or question? You can create a Tech Support Ticket at:
www.commscope.com/wisupport

Notice: CommScope disclaims any liability or responsibility for the results of improper or unsafe installation, inspection, maintenance, or removal practices.
 Aviso: CommScope no acepta ninguna obligación ni responsabilidad como resultado de prácticas incorrectas o peligrosas de instalación, inspección, mantenimiento o retiro.
 Avis : CommScope décline toute responsabilité pour les conséquences de procédures d'installation, d'inspection, d'entretien ou de retrait incorrectes ou dangereuses.
 Hinweis: CommScope lehnt jede Haftung oder Verantwortung für Schäden ab, die aufgrund unsachgemäßer Installation, Überprüfung, Wartung oder Demontage auftreten.
 Atenção: A CommScope abdica do direito de toda responsabilidade pelos resultados de práticas inadequadas e sem segurança de instalação, inspeção, manutenção ou remoção.
 Avvertenza: CommScope declina eventuali responsabilità derivanti dall'esecuzione di procedure di installazione, ispezione, manutenzione e smontaggio improprie o poco sicure.
 注意: CommScope 公司申明對於不恰當或不安全的安裝、檢驗、維修或拆卸操作所導致的後果不負責任 何義務和責任

