

T4S4-90A-R2-V4



16-port Planar Array Antenna, 8x 2300–2690 and 8x 3300–3800MHz, 90° HPBW, 2x RET

- For use in beamforming systems includes one calibration port per band
- 2x MQ4 and 2x MQ5 cluster connectors (comprising 16 RF ports + 2 calibration ports in total) are provided for the beam-forming arrays

General Specifications

| | |
|---|--|
| Antenna Type | Sector- and beamforming |
| Band | Multiband |
| Calibration Connector Interface | MQ5 |
| Calibration Connector Quantity | 2 |
| Color | Light Gray (RAL 7035) |
| Grounding Type | RF connector inner conductor and body grounded to reflector and mounting bracket |
| Performance Note | Outdoor usage |
| Radome Material | Fiberglass, UV resistant |
| Reflector Material | Aluminum |
| RF Connector Interface | MQ4 MQ5 |
| RF Connector Location | Bottom |
| RF Connector Quantity, high band | 8 |
| RF Connector Quantity, mid band | 8 |
| RF Connector Quantity, total | 16 |

Remote Electrical Tilt (RET) Information

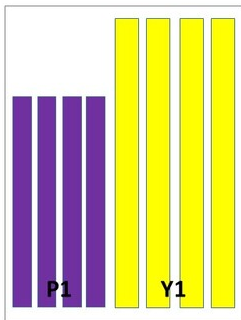
| | |
|---|-----------------------------------|
| RET Hardware | CommRET v2 |
| RET Interface | 8-pin DIN Female 8-pin DIN Male |
| RET Interface, quantity | 1 female 1 male |
| Input Voltage | 10–30 Vdc |
| Internal RET | High band (1) Mid band (1) |
| Power Consumption, active state, maximum | 8 W |
| Power Consumption, idle state, maximum | 1 W |
| Protocol | 3GPP/AISG 2.0 (Single RET) |

T4S4-90A-R2-V4

Dimensions

| | |
|---------------------------------|---------------------|
| Width | 498 mm 19.606 in |
| Depth | 197 mm 7.756 in |
| Length | 1499 mm 59.016 in |
| Net Weight, antenna only | 33 kg 72.752 lb |

Array Layout

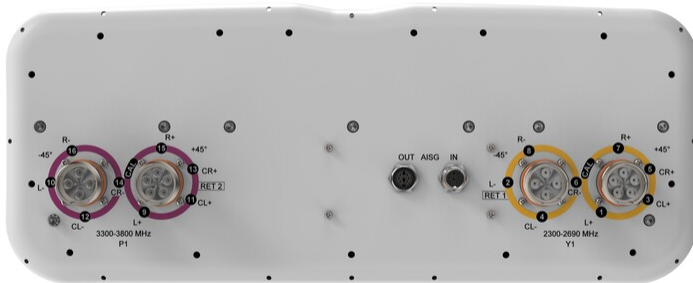


| Array | Freq (MHz) | Conns | RET (SRET) | AISG RET UID |
|-------|------------|-------|------------|----------------------|
| Y1 | 2300-2690 | 1-8 | 1 | CPxxxxxxxxxxxxxxxxY1 |
| P1 | 3300-3800 | 9-16 | 2 | CPxxxxxxxxxxxxxxxxP1 |

(Sizes of colored boxes are not true depictions of array sizes)

Left Right
Bottom

Port Configuration



T4S4-90A-R2-V4

Electrical Specifications

| | |
|-----------------------------------|-----------------------------------|
| Impedance | 50 ohm |
| Operating Frequency Band | 2300 – 2690 MHz 3300 – 3800 MHz |
| Polarization | ±45° |
| Total Input Power, maximum | 900 W @ 50 °C |

Electrical Specifications

| | Y1 | Y1 | P1 | P1 |
|--|------------------|------------------|------------------|------------------|
| Frequency Band, MHz | 2300–2500 | 2500–2690 | 3300–3600 | 3600–3800 |
| RF Port | 1-8 | 1-8 | 9-16 | 9-16 |
| Gain at Mid Tilt, dBi | 16.5 | 16.5 | 15.7 | 16.1 |
| Beamwidth, Horizontal, degrees | 103 | 97 | 99 | 92 |
| Beamwidth, Vertical, degrees | 5.2 | 5 | 6.7 | 6.3 |
| Beam Tilt, degrees | 2–12 | 2–12 | 2–12 | 2–12 |
| USLS (First Lobe), dB | 18 | 20 | 15 | 14 |
| Front-to-Back Ratio at 180°, dB | 35 | 35 | 30 | 29 |
| Coupling level, Amp, Antenna port to Cal port, dB | 26 | 26 | 26 | 26 |
| Coupling level, max Amp Δ, Antenna port to Cal port, dB | ±2 | ±2 | ±2 | ±2 |
| Coupler, max Amp Δ, Antenna port to Cal port, dB | 0.9 | 0.9 | 0.9 | 0.9 |
| Coupler, max Phase Δ, Antenna port to Cal port, degrees | 7 | 7 | 7 | 7 |
| Isolation, Cross Polarization, dB | 25 | 25 | 25 | 25 |
| Isolation, Inter-band, dB | 30 | 30 | 30 | 30 |
| Isolation, Co-polarization, dB | 18 | 18 | 19 | 19 |
| VSWR Return loss, dB | 1.5 14.0 | 1.5 14.0 | 1.5 14.0 | 1.5 14.0 |
| PIM, 3rd Order, 2 x 20 W, dBc | -130 | -130 | -130 | -130 |
| Input Power per Port at 50°C, maximum, watts | 150 | 150 | 75 | 75 |

Electrical Specifications, BASTA

| Frequency Band, MHz | 2300–2500 | 2500–2690 | 3300–3600 | 3600–3800 |
|---|------------------|------------------|------------------|------------------|
| Gain by all Beam Tilts, average, dBi | 16 | 16.1 | 15 | 15.3 |
| Gain by all Beam Tilts Tolerance, dB | ±0.5 | ±0.6 | ±0.6 | ±0.8 |

T4S4-90A-R2-V4

| | | | | |
|---|------|------|------|------|
| Beamwidth, Horizontal Tolerance, degrees | ±13 | ±6 | ±15 | ±18 |
| Beamwidth, Vertical Tolerance, degrees | ±0.3 | ±0.2 | ±0.4 | ±0.5 |
| USLS, beampeak to 20° above beampeak, dB | 17 | 17 | 14 | 13 |
| Front-to-Back Total Power at 180° ± 30°, dB | 26 | 26 | 20 | 21 |
| CPR at Boresight, dB | 15 | 15 | 17 | 14 |
| CPR at Sector, dB | 11 | 8 | 9 | 8 |

Electrical Specifications, Broadcast 65°

| Frequency Band, MHz | 2300–2500 | 2500–2690 | 3300–3600 | 3600–3800 |
|---|-----------|-----------|-----------|-----------|
| Gain, dBi | 17.9 | 17.9 | 16.2 | 16.3 |
| Beamwidth, Horizontal, degrees | 63 | 62 | 67 | 65 |
| Beamwidth, Vertical, degrees | 5.2 | 4.9 | 6.7 | 6.3 |
| Front-to-Back Total Power at 180° ± 30°, dB | 27 | 26 | 23 | 22 |
| USLS (First Lobe), dB | 18 | 20 | 16 | 16 |

Electrical Specifications, Service Beam

| Frequency Band, MHz | 2300–2500 | 2500–2690 | 3300–3600 | 3600–3800 |
|---|-----------|-----------|-----------|-----------|
| Steered 0° Gain, dBi | 21.6 | 21.8 | 20.6 | 20.8 |
| Steered 0° Beamwidth, Horizontal, degrees | 27 | 25 | 25 | 23 |
| Steered 0° Front-to-Back Total Power at 180° ± 30°, dB | 31 | 31 | 28 | 28 |
| Steered 0° Horizontal Sidelobe, dB | 12 | 11 | 12 | 12 |
| Steered 0° USLS (First Lobe), dB | 20 | 22 | 16 | 15 |
| Steered 30° Gain, dBi | 21.2 | 21.2 | 19.8 | 19.9 |
| Steered 30° Beamwidth, Horizontal, degrees | 29 | 27 | 29 | 27 |
| Steered 30° Front-to-Back Total Power at 180° ± 30°, dB | 30 | 30 | 24 | 25 |

Electrical Specifications, Soft Split

| Frequency Band, MHz | 2300–2500 | 2500–2690 | 3300–3600 | 3600–3800 |
|--------------------------------|-----------|-----------|-----------|-----------|
| Gain, dBi | 21.1 | 21.1 | 19.7 | 19.9 |
| Beamwidth, Horizontal, degrees | 32 | 31 | 32 | 30 |

T4S4-90A-R2-V4

| | | | | |
|--|----|----|----|----|
| Front-to-Back Total Power at 180° ± 30°, dB | 30 | 29 | 26 | 27 |
| Horizontal Sidelobe, dB | 18 | 17 | 18 | 17 |
| USLS (First Lobe), dB | 16 | 17 | 16 | 16 |

Mechanical Specifications

| | |
|---|---|
| Wind Loading @ Velocity, frontal | 498.0 N @ 150 km/h (112.0 lbf @ 150 km/h) |
| Wind Loading @ Velocity, lateral | 148.0 N @ 150 km/h (33.3 lbf @ 150 km/h) |
| Wind Loading @ Velocity, maximum | 597.0 N @ 150 km/h (134.2 lbf @ 150 km/h) |
| Wind Loading @ Velocity, rear | 342.0 N @ 150 km/h (76.9 lbf @ 150 km/h) |
| Wind Speed, maximum | 241 km/h (150 mph) |

Packaging and Weights

| | |
|-----------------------|----------------------|
| Width, packed | 565 mm 22.244 in |
| Depth, packed | 309 mm 12.165 in |
| Length, packed | 1686 mm 66.378 in |
| Weight, gross | 45.7 kg 100.751 lb |

Regulatory Compliance/Certifications

| Agency | Classification |
|---------------|--|
| ISO 9001:2015 | Designed, manufactured and/or distributed under this quality management system |



Included Products

| | | |
|----------|---|--|
| BSAMNT-3 | – | Wide Profile Antenna Downtilt Mounting Kit for 2.4 - 4.5 in (60 - 115 mm) OD round members. Kit contains one scissor top bracket set and one bottom bracket set. |
|----------|---|--|

* Footnotes

| | |
|-------------------------|---|
| Performance Note | Severe environmental conditions may degrade optimum performance |
|-------------------------|---|