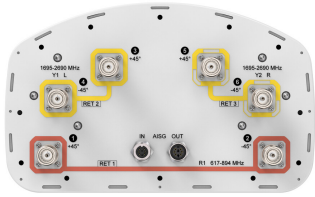


FVV-65B-R3-V1



6-port sector antenna, 2x 617-894 and 4x 1695-2690 MHz, 65° HPBW, 3x RET, 600 MHz-Ready Antenna Technology

General Specifications

| | |
|---|--|
| Antenna Type | Sector |
| Band | Multiband |
| Color | Light Gray (RAL 7035) |
| Grounding Type | RF connector inner conductor and body grounded to reflector and mounting bracket |
| Performance Note | Outdoor usage |
| Radome Material | Fiberglass, UV resistant |
| Reflector Material | Aluminum |
| RF Connector Interface | 4.3-10 Female |
| RF Connector Location | Bottom |
| RF Connector Quantity, high band | 4 |
| RF Connector Quantity, low band | 2 |
| RF Connector Quantity, total | 6 |

Remote Electrical Tilt (RET) Information

| | |
|---|-----------------------------------|
| RET Hardware | CommRET v2 |
| RET Interface | 8-pin DIN Female 8-pin DIN Male |
| RET Interface, quantity | 1 female 1 male |
| Input Voltage | 10-30 Vdc |
| Internal RET | High band (2) Low band (1) |
| Power Consumption, active state, maximum | 8 W |
| Power Consumption, idle state, maximum | 1 W |
| Protocol | 3GPP/AISG 2.0 |

Dimensions

| | |
|--------------|--------------------|
| Width | 300 mm 11.811 in |
|--------------|--------------------|

FVV-65B-R3-V1

| | |
|---|---------------------|
| Depth | 181 mm 7.126 in |
| Length | 1828 mm 71.969 in |
| Net Weight, without mounting kit | 20.7 kg 45.636 lb |

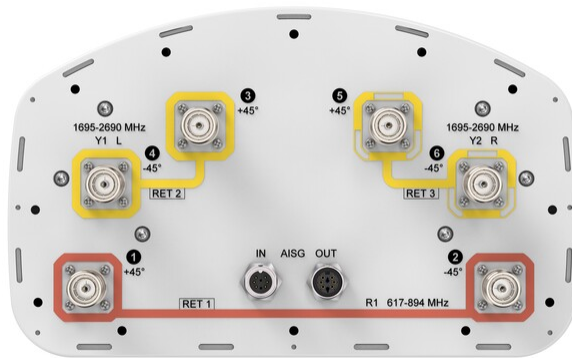
Array Layout



| Array ID | Frequency (MHz) | RF Connector | RET (SRET) | AISG No. | AISG RET UID |
|----------|-----------------|--------------|---------------|----------|----------------------|
| R1 | 617-894 | 1 - 2 | 1 | AISG1 | CPxxxxxxxxxxxxxxxxR1 |
| Y1 | 1695-2690 | 3 - 4 | 2 | AISG1 | CPxxxxxxxxxxxxxxxxY1 |
| Y2 | 1695-2690 | 5 - 6 | 3 | AISG1 | CPxxxxxxxxxxxxxxxxY2 |

(Sizes of colored boxes are not true depictions of array sizes)

Port Configuration



Electrical Specifications

| | |
|-----------------------------------|---------------------------------|
| Impedance | 50 ohm |
| Operating Frequency Band | 1695 – 2690 MHz 617 – 894 MHz |
| Polarization | ±45° |
| Total Input Power, maximum | 900 W @ 50 °C |

FVV-65B-R3-V1

Electrical Specifications

| Frequency Band, MHz | 617-698 | 698-894 | 1695-1880 | 1850-1990 | 1920-2200 | 2300-2500 | 2500-2690 |
|--|----------|----------|-----------|-----------|-----------|-----------|-----------|
| Gain, dBi | 14.3 | 14.7 | 17.5 | 18.1 | 18.4 | 18.7 | 18.7 |
| Beamwidth, Horizontal, degrees | 71 | 70 | 66 | 64 | 64 | 63 | 60 |
| Beamwidth, Vertical, degrees | 14.5 | 12.2 | 5.6 | 5.3 | 5 | 4.4 | 4.2 |
| Beam Tilt, degrees | 2-14 | 2-14 | 2-12 | 2-12 | 2-12 | 2-12 | 2-12 |
| USLS (First Lobe), dB | 20 | 19 | 18 | 18 | 19 | 20 | 20 |
| Front-to-Back Ratio at 180°, dB | 25 | 29 | 37 | 35 | 31 | 28 | 32 |
| Isolation, Cross Polarization, dB | 25 | 25 | 25 | 25 | 25 | 25 | 25 |
| Isolation, Inter-band, dB | 28 | 28 | 28 | 28 | 28 | 28 | 28 |
| VSWR Return loss, dB | 1.5 14.0 | 1.5 14.0 | 1.5 14.0 | 1.5 14.0 | 1.5 14.0 | 1.5 14.0 | 1.5 14.0 |
| PIM, 3rd Order, 2 x 20 W, dBc | -150 | -150 | -150 | -150 | -150 | -150 | -150 |
| Input Power per Port at 50°C, maximum, watts | 250 | 250 | 200 | 200 | 200 | 200 | 200 |

Electrical Specifications, BASTA

| Frequency Band, MHz | 617-698 | 698-894 | 1695-1880 | 1850-1990 | 1920-2200 | 2300-2500 | 2500-2690 |
|---|---------|---------|-----------|-----------|-----------|-----------|-----------|
| Gain by all Beam Tilts, average, dBi | 14 | 14.3 | 17 | 17.6 | 18.1 | 18.4 | 18.4 |
| Gain by all Beam Tilts Tolerance, dB | ±0.4 | ±0.5 | ±0.7 | ±0.5 | ±0.5 | ±0.4 | ±0.4 |
| Beamwidth, Horizontal Tolerance, degrees | ±2 | ±3.3 | ±3.5 | ±2.7 | ±2.9 | ±6.7 | ±7.5 |
| Beamwidth, Vertical Tolerance, degrees | ±1.3 | ±1.5 | ±0.4 | ±0.2 | ±0.3 | ±0.2 | ±0.2 |
| USLS, beampeak to 20° above beampeak, dB | | 17 | 15 | 17 | 17 | 17 | 13 |
| Front-to-Back Total Power at 180° ± 30°, dB | 20 | 22 | 24 | 26 | 26 | 24 | 27 |
| CPR at Boresight, dB | 16 | 15 | 17 | 18 | 19 | 18 | 16 |
| CPR at Sector, dB | 9 | 9 | 8 | 9 | 6 | 4 | 3 |

Mechanical Specifications

| | |
|--|---|
| Effective Projective Area (EPA), frontal | 0.26 m ² 2.799 ft ² |
| Effective Projective Area (EPA), lateral | 0.22 m ² 2.368 ft ² |

FVV-65B-R3-V1

| | |
|---|---|
| Wind Loading @ Velocity, frontal | 278.0 N @ 150 km/h (62.5 lbf @ 150 km/h) |
| Wind Loading @ Velocity, lateral | 230.0 N @ 150 km/h (51.7 lbf @ 150 km/h) |
| Wind Loading @ Velocity, maximum | 537.0 N @ 150 km/h (120.7 lbf @ 150 km/h) |
| Wind Loading @ Velocity, rear | 282.0 N @ 150 km/h (63.4 lbf @ 150 km/h) |
| Wind Speed, maximum | 241 km/h (150 mph) |

Packaging and Weights

| | |
|-----------------------|---------------------|
| Width, packed | 560 mm 22.047 in |
| Depth, packed | 337 mm 13.268 in |
| Length, packed | 1973 mm 77.677 in |
| Weight, gross | 27 kg 59.525 lb |

Regulatory Compliance/Certifications

| Agency | Classification |
|---------------|--|
| CHINA-ROHS | Above maximum concentration value |
| ISO 9001:2015 | Designed, manufactured and/or distributed under this quality management system |
| ROHS | Compliant/Exempted |
| UK-ROHS | Compliant/Exempted |



Included Products

| | | |
|----------|---|--|
| BSAMNT-3 | – | Wide Profile Antenna Downtilt Mounting Kit for 2.4 - 4.5 in (60 - 115 mm) OD round members. Kit contains one scissor top bracket set and one bottom bracket set. |
|----------|---|--|

* Footnotes

| | |
|-------------------------|---|
| Performance Note | Severe environmental conditions may degrade optimum performance |
|-------------------------|---|