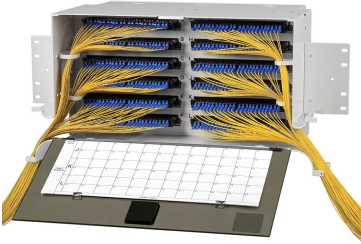


LSX-T00000-CMOD



LSX Empty CMOD 5RU Panel, holds 12 CMOD

Product Classification

Regional Availability	Latin America North America
Portfolio	CommScope®
Product Type	Fiber patch panel
Product Series	LSX

General Specifications

Functionality	Patching
Application	Used in LSX-style frames only
Color	Putty white
Growth Configuration	Unloaded
Interface, front	Unloaded
Patch Cord Entry Location	Front, left side Front, right side
Rack Type	EIA 23 in
Rack Units	5
Shelf Movement	Fixed
Total Ports, quantity	12

Dimensions

Height	226.06 mm 8.9 in
Width	482.6 mm 19 in
Depth	279 mm 10.984 in

Material Specifications

Finish	Powder coated
Material Type	Steel

Optical Specifications

LSX-T00000-CMOD

Fiber Mode Singlemode

Environmental Specifications

Operating Temperature -40 °C to +70 °C (-40 °F to +158 °F)

Packaging and Weights

Packaging quantity 1

Regulatory Compliance/Certifications

Agency	Classification
CHINA-ROHS	Below maximum concentration value
REACH-SVHC	Compliant as per SVHC revision on www.commscope.com/ProductCompliance
ROHS	Compliant
UK-ROHS	Compliant

