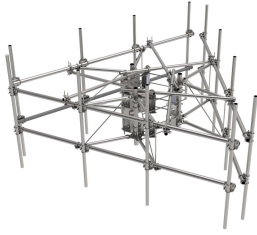


# MCG22HD-10M-9-96

---



G22HD High Capacity 3-Sector Monopole Frame with 2 7/8in OD x 10.5 ft face. Includes nine 2 3/8in OD x 96in antenna pipes

## Product Classification

<b>Product Type</b>	High capacity monopole sector frame
<b>Product Series</b>	G2
<b>Ordering Note</b>	NSTD445 Compliant

## General Specifications

<b>Mounting</b>	Monopole, 381–1270 mm (15–50 in) OD
<b>Pipe, quantity</b>	9
<b>Sectors, quantity</b>	3

## Dimensions

<b>Height</b>	2,438.4 mm   96 in
<b>Face Width</b>	3.2 m   10.5 ft
<b>Width</b>	3,200.4 mm   126 in
<b>Pipe Length</b>	2,438.4 mm   96 in
<b>Face Support Pipe Diameter</b>	73.025 mm   2.875 in
<b>Mounting Diameter, maximum</b>	1270 mm   50 in
<b>Mounting Diameter, minimum</b>	381 mm   15 in
<b>Pipe Outer Diameter</b>	60.325 mm   2.375 in
<b>Stand-off Distance</b>	1,041.4 mm   41 in

## Material Specifications

<b>Material Type</b>	Hot dip galvanized steel
----------------------	--------------------------

## Mechanical Specifications

<b>Wind Rating</b>	For Specifications, please contact your local ANDREW representative
<b>Wind Rating Test Method</b>	TIA/EIA-222

# MCG22HD-10M-9-96

---

## Packaging and Weights

**Included** Pipe mounts | Plain end pipes (9) | Ring mounts (2) | Sector frames (3) | Stiff arm  
**Packaging quantity** 1

## \* Footnotes

**Wind Rating** BWS—Base Wind Speed; FBC—Florida Building Code