

VV-65A-R2VB-V2



4-port sector antenna, 4x 1695–2690 MHz, 65° HPBW, 2x RET

- Uses the 4.3-10 connector which is 40 percent smaller than the 7-16 DIN connector
- With tilt indicators and integrated internal RET model

General Specifications

Antenna Type	Sector
Band	Single band
Color	Light Gray (RAL 7035)
Grounding Type	RF connector inner conductor and body grounded to reflector and mounting bracket
Performance Note	Outdoor usage
Radome Material	Fiberglass, UV resistant
Radiator Material	Aluminum
Reflector Material	Aluminum
RF Connector Interface	4.3-10 Female
RF Connector Location	Bottom
RF Connector Quantity, mid band	4
RF Connector Quantity, total	4

Remote Electrical Tilt (RET) Information

RET Hardware	CommRET v2
RET Interface	8-pin DIN Female 8-pin DIN Male
RET Interface, quantity	1 female 1 male
Input Voltage	10–30 Vdc
Internal RET	Mid band (2)
Power Consumption, active state, maximum	10 W
Power Consumption, idle state, maximum	2 W
Protocol	3GPP/AISG 2.0 (Single RET)

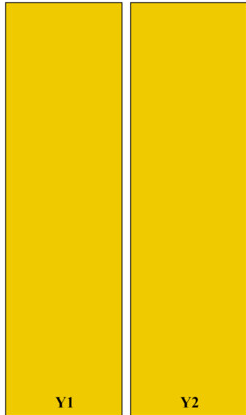
Dimensions

Width	257 mm 10.118 in
--------------	--------------------

VV-65A-R2VB-V2

Depth	87 mm 3.425 in
Length	1377 mm 54.213 in
Net Weight, without mounting kit	9.8 kg 21.605 lb

Array Layout



Array ID	Frequency (MHz)	RF Connector	HPBW	RET (SRET)	AISG No.	AISG RET UID
Y1	1695-2690	1 - 2	65°	1	AISG1	CPXXXXXXXXXXXXX1
Y2	1695-2690	3 - 4	65°	2	AISG1	CPXXXXXXXXXXXXX2

(Sizes of colored boxes are not true depictions of array sizes)

Port Configuration



Electrical Specifications

Impedance	50 ohm
Operating Frequency Band	1695 – 2690 MHz
Polarization	±45°
Total Input Power, maximum	450 W

VV-65A-R2VB-V2

Electrical Specifications

Frequency Band, MHz	1695–1880	1850–1920	1920–2200	2300–2500	2500–2690
Gain, dBi	17.3	17.7	18.2	18.5	18.2
Beamwidth, Horizontal, degrees	66	63	62	61	56
Beamwidth, Vertical, degrees	7.1	6.8	6.2	5.3	5
Beam Tilt, degrees	0–10	0–10	0–10	0–10	0–10
USLS (First Lobe), dB	20	23	22	16	16
Front-to-Back Ratio, Copolarization 180° ± 30°, dB	30	31	29	29	30
Isolation, Cross Polarization, dB	30	30	30	30	30
Isolation, Inter-band, dB	30	30	30	30	30
VSWR Return loss, dB	1.5 14.0	1.5 14.0	1.5 14.0	1.5 14.0	1.5 14.0
PIM, 3rd Order, 2 x 20 W, dBc	-153	-153	-153	-153	-153
Input Power per Port, maximum, watts	200	200	200	200	200

Electrical Specifications, BASTA

Frequency Band, MHz	1695–1880	1850–1920	1920–2200	2300–2500	2500–2690
Gain by all Beam Tilts, average, dBi	17	17.5	17.9	18.2	17.9
Gain by all Beam Tilts Tolerance, dB	±0.7	±0.2	±0.3	±0.5	±0.5
Beamwidth, Horizontal Tolerance, degrees	±3.8	±1.2	±2.4	±3	±3.3
Beamwidth, Vertical Tolerance, degrees	±0.4	±0.2	±0.4	±0.3	±0.2
CPR at Boresight, dB	28	27	25	25	25

Mechanical Specifications

Wind Loading @ Velocity, frontal	278.0 N @ 150 km/h (62.5 lbf @ 150 km/h)
Wind Loading @ Velocity, lateral	75.0 N @ 150 km/h (16.9 lbf @ 150 km/h)
Wind Loading @ Velocity, rear	237.0 N @ 150 km/h (53.3 lbf @ 150 km/h)
Wind Speed, maximum	241 km/h (150 mph)

Packaging and Weights

VV-65A-R2VB-V2

Width, packed	352 mm 13.858 in
Depth, packed	207 mm 8.15 in
Length, packed	1557 mm 61.299 in
Weight, gross	16 kg 35.274 lb

Regulatory Compliance/Certifications

Agency	Classification
CHINA-ROHS	Below maximum concentration value
ISO 9001:2015	Designed, manufactured and/or distributed under this quality management system
REACH-SVHC	Compliant as per SVHC revision on www.commscope.com/ProductCompliance
ROHS	Compliant
UK-ROHS	Compliant



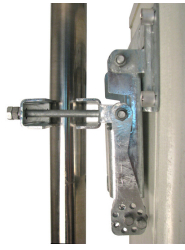
Included Products

BSAMNT-B95-01	-	Wide Profile Antenna Downtilt Mounting Kit for 2.4 - 4.5 in (60 - 115 mm) OD round members. Kit contains one scissor top bracket set and one bottom bracket set.
---------------	---	--

* Footnotes

Performance Note	Severe environmental conditions may degrade optimum performance
-------------------------	---

BSAMNT-B95-01



Wide Profile Antenna Downtilt Mounting Kit for 2.4 - 4.5 in (60 - 115 mm) OD round members. Kit contains one scissor top bracket set and one bottom bracket set.

Product Classification

Product Type Downtilt mounting kit

General Specifications

Application Outdoor

Color Silver

Dimensions

Compatible Diameter, maximum 115 mm | 4.528 in

Compatible Diameter, minimum 61 mm | 2.402 in

Material Specifications

Material Type Galvanized steel

Packaging and Weights

Included Brackets | Hardware

Packaging quantity 2

Weight, gross 3.6 kg | 7.937 lb

Regulatory Compliance/Certifications

Agency

CE
ISO 9001:2015

Classification

Compliant with the relevant CE product directives
Designed, manufactured and/or distributed under this quality management system

