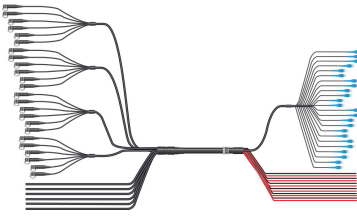


# FDH1204-48SE2



HELIAX® Direct-connect 6 x 24 hybrid trunk assembly: 6 pairs of 4AWG DC conductors x 24 pairs of single mode fibers.

- RRU (top) breakout; 6 blunt-cut power cords (6-6AWG pairs), 48 single mode fibers in outdoor-rated tails with ODC-compatible interface
- BBU (bottom) breakout; 12-4AWG power conductors blunt cut, 48 single mode fibers within 24 DLC tails

## Product Classification

<b>Regional Availability</b>	Asia   Australia/New Zealand   EMEA   Latin America   North America
<b>Portfolio</b>	CommScope®
<b>Product Type</b>	Hybrid cable assembly
<b>Product Brand</b>	HELIAX®
<b>Product Series</b>	FDH

## General Specifications

<b>Conductors, quantity</b>	12
<b>Construction Type</b>	Direct breakout trunk
<b>Interface, Connector A</b>	ODC-LC
<b>Interface Feature, connector A</b>	Outdoor
<b>Interface Body Style, connector A</b>	Straight
<b>Interface, Connector B</b>	DLC
<b>Interface Feature, connector B</b>	Standard
<b>Interface Body Style, connector B</b>	Straight
<b>Jacket Color</b>	Black
<b>Total Fibers, quantity</b>	48

## Dimensions

<b>Cable Assembly Length Range (m)</b>	10 – 130
<b>Diameter Over Jacket</b>	44.78 mm   1.763 in
<b>Center Conductor Gauge</b>	4 AWG

## Mechanical Specifications

<b>Minimum Bend Radius</b>	523.2 mm   20.598 in
----------------------------	----------------------

# FDH1204-48SE2

---

**Minimum Bend Radius, furcation** 30 mm | 1.181 in

## Optical Specifications

**Fiber Type** G.657.A2/B2

**Insertion Loss, typical note** Insertion loss is measured at 1310 and 1550 nm

**Insertion Loss, typical** 0.75

## Environmental Specifications

**Operating Temperature** -40 °C to +75 °C (-40 °F to +167 °F)

## Packaging and Weights

**Cable weight** 3.4 kg/m | 2.285 lb/ft

## \* Footnotes

**Insertion Loss, typical note** Insertion loss is measured at a room temp of +20°C (+68°F)